

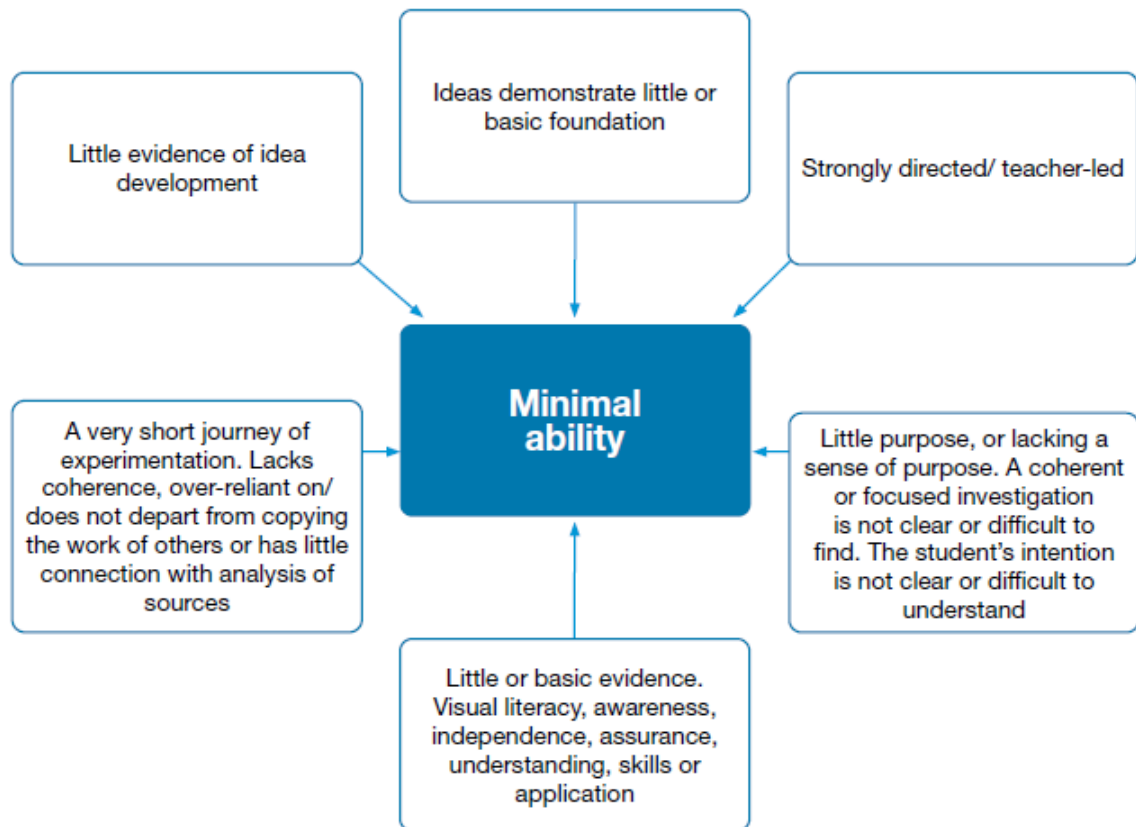
## Notes and Guidance: Marking guidance spidergrams

You may find these spidergrams helpful in matching students work to the correct mark band for GCSE Art and Design (8201 – 8206).

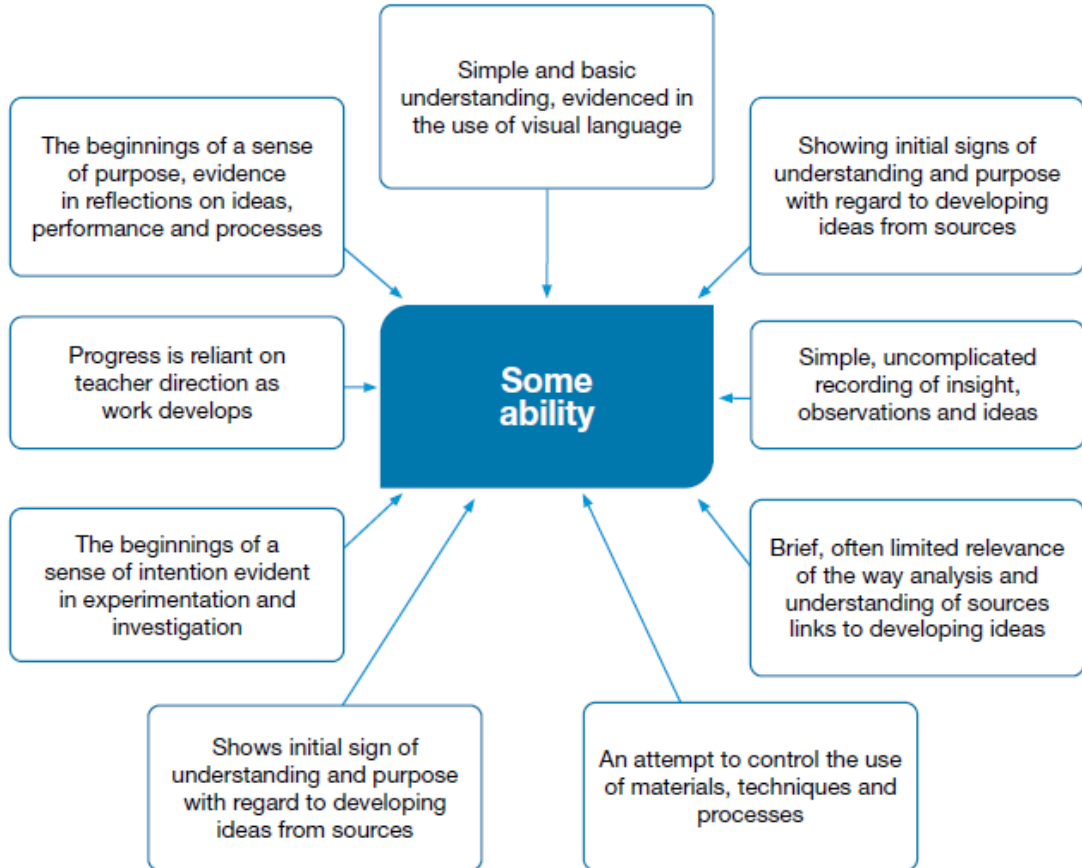
The language can be used in conversations with students about what they need to do and evidence, in order to progress to a higher mark band.

Version 1.0, Last updated April 2023

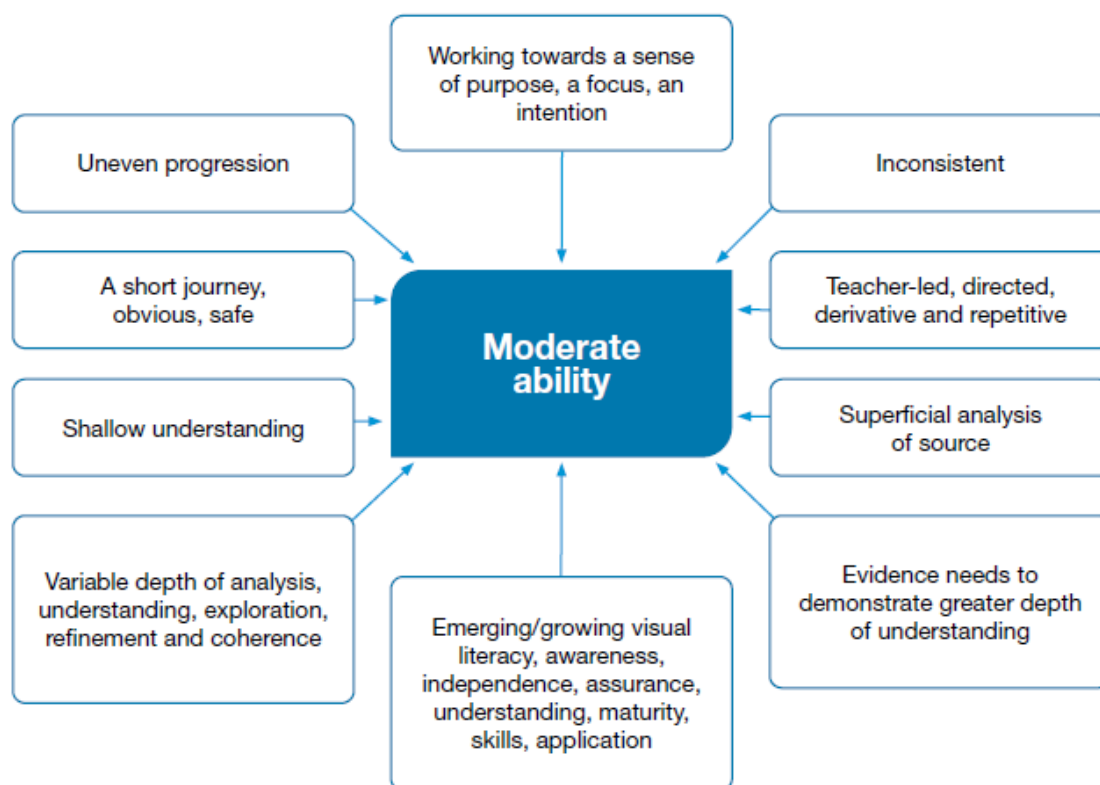
Minimal ability: 1 - 4 marks



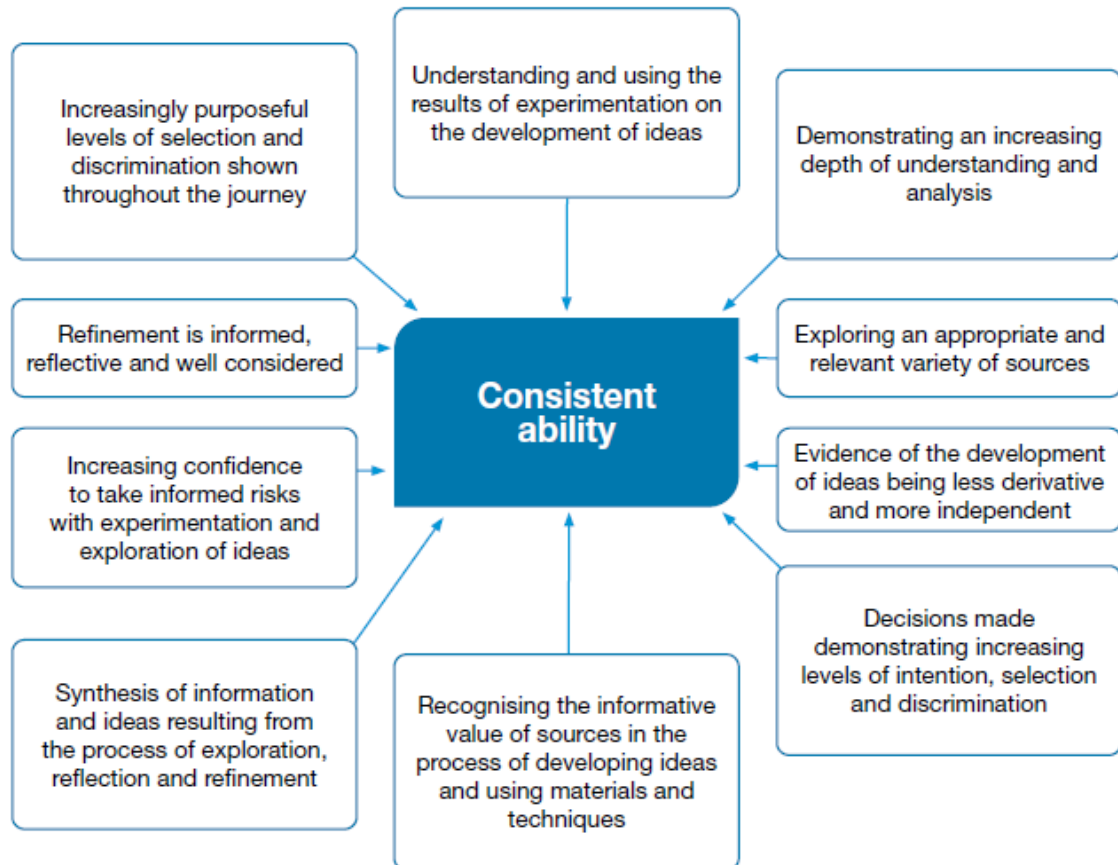
Some ability: 5 - 8 marks



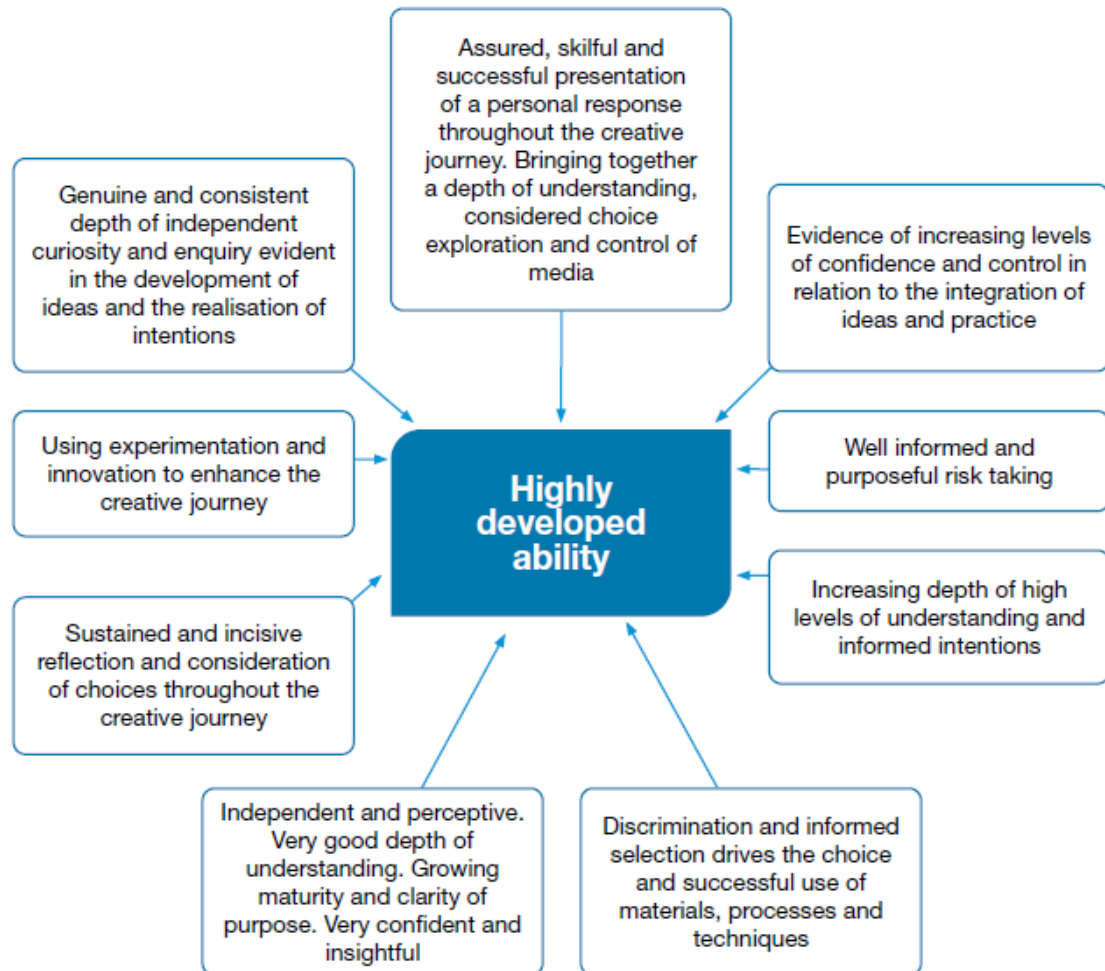
## Moderate ability: 9 - 12 marks



## Consistent ability: 13 - 16 marks



## Highly developed ability: 17 - 20 marks



## Exceptional ability: 21 - 24 marks

