

Centre Number						Candidate Number				
Surname										
Other Names										
Candidate Signature										

For Examiner's Use	
Examiner's Initials	
Question	Mark
1	
2	
3	
4	
5	
6	
7	
8	
9	
TOTAL	



General Certificate of Education
Advanced Subsidiary Examination
January 2013

Mathematics

MFP1

Unit Further Pure 1

Friday 18 January 2013 1.30 pm to 3.00 pm

For this paper you must have:

- the blue AQA booklet of formulae and statistical tables.

You may use a graphics calculator.

Time allowed

- 1 hour 30 minutes

Instructions

- Use black ink or black ball-point pen. Pencil should only be used for drawing.
- Fill in the boxes at the top of this page.
- Answer **all** questions.
- Write the question part reference (eg (a), (b)(i) etc) in the left-hand margin.
- You must answer each question in the space provided for that question. If you require extra space, use an AQA supplementary answer book; do **not** use the space provided for a different question.
- Do not write outside the box around each page.
- Show all necessary working; otherwise marks for method may be lost.
- Do all rough work in this book. Cross through any work that you do not want to be marked.

Information

- The marks for questions are shown in brackets.
- The maximum mark for this paper is 75.

Advice

- Unless stated otherwise, you may quote formulae, without proof, from the booklet.
- You do not necessarily need to use all the space provided.



J A N 1 3 M F P 1 0 1

QUESTION
PART
REFERENCE

Answer space for question 1

A large rectangular area with horizontal dotted lines for writing.

Turn over ►



QUESTION
PART
REFERENCE

Answer space for question 2

A large rectangular area with horizontal dotted lines for writing an answer.



Turn over ►

4 Show that the improper integral $\int_{25}^{\infty} \frac{1}{x\sqrt{x}} dx$ has a finite value and find that value.
(4 marks)

QUESTION
PART
REFERENCE

Answer space for question 4



QUESTION
PART
REFERENCE

Answer space for question 5

A large rectangular area with horizontal dotted lines for writing an answer.

Turn over ►



6 (a) The matrix \mathbf{X} is defined by $\begin{bmatrix} 1 & 2 \\ 3 & 0 \end{bmatrix}$.

(i) Given that $\mathbf{X}^2 = \begin{bmatrix} m & 2 \\ 3 & 6 \end{bmatrix}$, find the value of m . (1 mark)

(ii) Show that $\mathbf{X}^3 - 7\mathbf{X} = n\mathbf{I}$, where n is an integer and \mathbf{I} is the 2×2 identity matrix. (4 marks)

(b) It is given that $\mathbf{A} = \begin{bmatrix} 1 & 0 \\ 0 & -1 \end{bmatrix}$.

(i) Describe the geometrical transformation represented by \mathbf{A} . (1 mark)

(ii) The matrix \mathbf{B} represents an anticlockwise rotation through 45° about the origin.

Show that $\mathbf{B} = k \begin{bmatrix} 1 & -1 \\ 1 & 1 \end{bmatrix}$, where k is a surd. (2 marks)

(iii) Find the image of the point $P(-1, 2)$ under an anticlockwise rotation through 45° about the origin, followed by the transformation represented by \mathbf{A} . (4 marks)

QUESTION
PART
REFERENCE

Answer space for question 6



QUESTION
PART
REFERENCE

Answer space for question 6

A large rectangular area with horizontal dotted lines for writing an answer.

Turn over ►



QUESTION
PART
REFERENCE

Answer space for question 6

A large rectangular area with horizontal dotted lines for writing an answer.



QUESTION
PART
REFERENCE

Answer space for question 6

A large rectangular area with horizontal dotted lines for writing an answer.



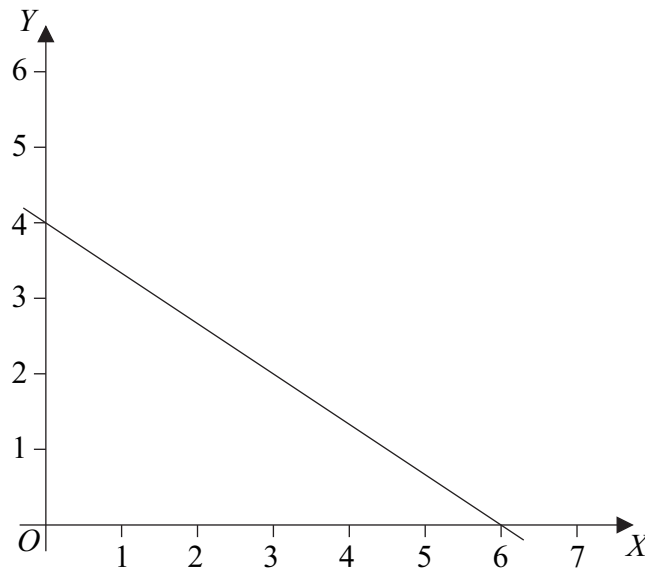
7 The variables y and x are related by an equation of the form

$$y = ax^n$$

where a and n are constants.

Let $Y = \log_{10}y$ and $X = \log_{10}x$.

- (a) Show that there is a linear relationship between Y and X . (3 marks)
- (b) The graph of Y against X is shown in the diagram.



Find the value of n and the value of a . (4 marks)

QUESTION
PART
REFERENCE

Answer space for question 7

.....

.....

.....

.....

.....

.....

.....

.....

.....

.....



QUESTION
PART
REFERENCE

Answer space for question 7

A large rectangular area with horizontal dotted lines for writing an answer.

Turn over ►



QUESTION
PART
REFERENCE

Answer space for question 8

A large rectangular area with horizontal dotted lines for writing an answer.



QUESTION
PART
REFERENCE

Answer space for question 9

A large rectangular area with horizontal dotted lines for writing an answer.

Turn over ►



QUESTION
PART
REFERENCE

Answer space for question 9

A large rectangular area with horizontal dotted lines for writing an answer.



QUESTION
PART
REFERENCE

Answer space for question 9

A large rectangular area with horizontal dotted lines for writing an answer.

END OF QUESTIONS



There are no questions printed on this page

**DO NOT WRITE ON THIS PAGE
ANSWER IN THE SPACES PROVIDED**

