



Surname _____

Other Names _____

Centre Number _____

Candidate Number _____

Candidate Signature _____

AS MATHEMATICS

Paper 2

7356/2

Wednesday 22 May 2019 Morning

Time allowed: 1 hour 30 minutes

For this paper:

- You must have the **AQA Formulae for A-level Mathematics** booklet.
- You should have a graphical or scientific calculator that meets the requirements of the specification.

At the top of the page, write your surname and other names, your centre number, your candidate number and add your signature.

[Turn over]



JUN197356201

BLANK PAGE



INSTRUCTIONS

- Use black ink or black ball-point pen. Pencil should only be used for drawing.
- Answer ALL questions.
- You must answer each question in the space provided for that question. If you require extra space, use an AQA supplementary answer book; do NOT use the space provided for a different question.
- Show all necessary working; otherwise marks for method may be lost.
- Do all rough work in this book. Cross through any work that you do not want to be marked.

INFORMATION

- The marks for questions are shown in brackets.
- The maximum mark for this paper is 80.

ADVICE

- Unless stated otherwise, you may quote formulae, without proof, from the booklet.
- You do not necessarily need to use all the space provided.

DO NOT TURN OVER UNTIL TOLD TO DO SO



SECTION A

Answer ALL questions in the spaces provided.

- 1 Find the gradient of the curve $y = e^{-3x}$ at the point where it crosses the y -axis.

Circle your answer. [1 mark]

−3 −1 1 3

- 2 Find the centre of the circle
 $x^2 + y^2 + 4x - 6y = 12$

Tick (✓) ONE box. [1 mark]

(−2, −3)

(−2, 3)

(2, −3)

(2, 3)



- 3 It is given that $\sin \theta = -0.1$ and $180^\circ < \theta < 270^\circ$

Find the exact value of $\cos \theta$ [2 marks]

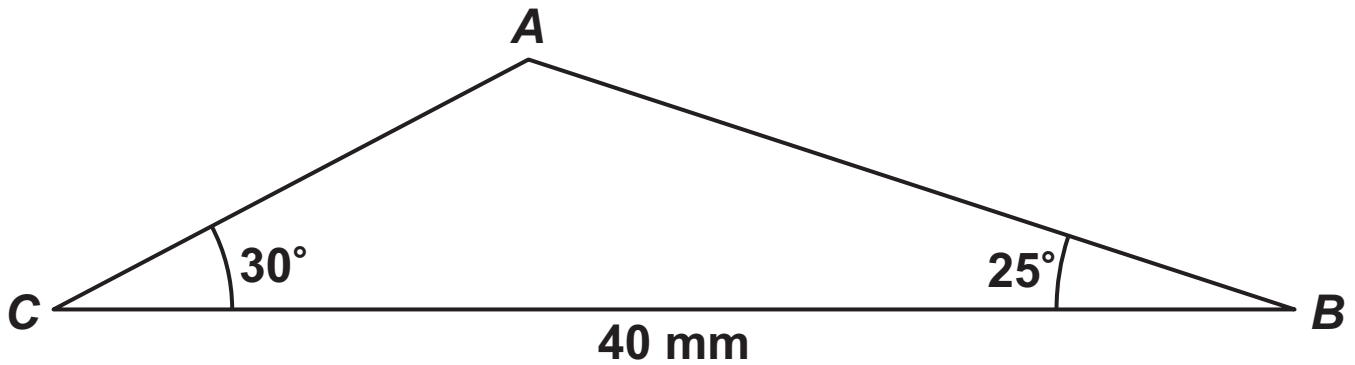
[Turn over]



[Turn over]



- 5 A triangular prism has a cross section ABC as shown in the diagram below.



Angle $ABC = 25^\circ$

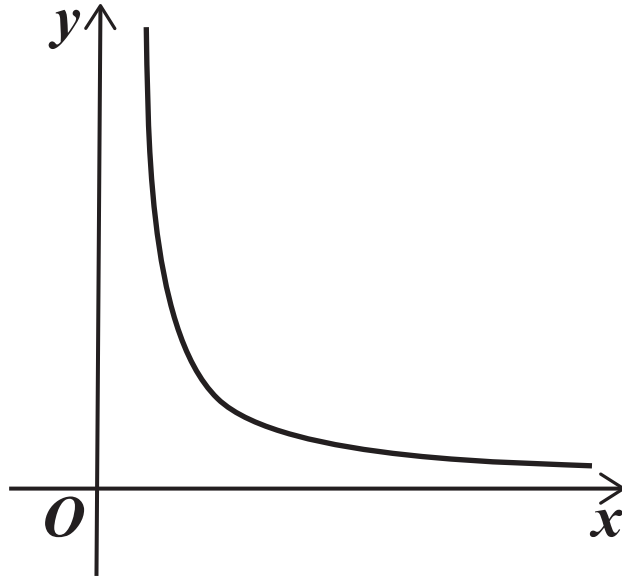
Angle $ACB = 30^\circ$

$BC = 40$ millimetres.

The length of the prism is 300 millimetres.

Calculate the volume of the prism, giving your answer to three significant figures. [4 marks]

6 A curve has equation $y = \frac{2}{x\sqrt{x}}$



The region enclosed between the curve, the x -axis and the lines $x = 1$ and $x = a$ has area 3 units.

Given that $a > 1$, find the value of a .

Fully justify your answer. [5 marks]

9 (b) State the coordinates of the turning points of the curve

$$y = f(x + 1) - 4$$

[2 marks]

[Turn over]



- 10 As part of an experiment, Zena puts a bucket of hot water outside on a day when the outside temperature is 0°C .

She measures the temperature of the water after 10 minutes and after 20 minutes. Her results are shown below.

Time (minutes)	10	20
Temperature (degrees Celsius)	30	12

Zena models the relationship between θ , the temperature of the water in $^{\circ}\text{C}$, and t , the time in minutes, by

$$\theta = A \times 10^{-kt}$$

where A and k are constants.

- 10 (a) Using $t = 0$, explain how the value of A relates to the experiment. [1 mark]



10 (b) Show that

$$\log_{10} \theta = \log_{10} A - kt$$

[1 mark]

[Turn over]



- 10 (e) Explain why Zena's model is unlikely to accurately give the value of θ after 45 minutes.
[1 mark]

BLANK PAGE

[Turn over for the next question]



SECTION B

Answer ALL questions in the spaces provided.

11 **A survey is undertaken to find out the most popular political party in London.**

The first 1100 available people from London are surveyed.

Identify the name of this type of sampling.

Circle your answer. [1 mark]

simple random

opportunity

stratified

quota



12

Manny is studying the price and number of pages of a random sample of books.

He calculates the value of the product moment correlation coefficient between the price and number of pages in each book as 1.05

Which of the following best describes the value 1.05?

Tick (✓) ONE box. [1 mark]

definitely correct

probably correct

probably incorrect

definitely incorrect

[Turn over]



13 Denzel wants to buy a car with a propulsion type **OTHER THAN** petrol or diesel.

He takes a sample, from the Large Data Set, of the CO₂ emissions, in g/km, of cars with one particular propulsion type.

The sample is as follows

82 13 96 49 96 92 70 81

13 (a) Using your knowledge of the Large Data Set, state which propulsion type this sample is for, giving a reason for your answer. [2 marks]

13 (b) Calculate the mean of the sample. [1 mark]

13 (c) Calculate the standard deviation of the sample. [1 mark]

[Turn over]

13 (d) Denzel claims that the value 13 is an outlier.

13(d) (i) Any value more than 2 standard deviations from the mean can be regarded as an outlier.

Verify that Denzel's claim is correct. [1 mark]

13 (d) (ii) State what effect, if any, removing the value 13 from the sample would have on the standard deviation. [1 mark]

[Turn over]



- 14 A probability distribution is given by
 $P(X = x) = c(4 - x)$, for $x = 0, 1, 2, 3$
where c is a constant.

14 (a) Show that $c = \frac{1}{10}$ [2 marks]

14 (b) Calculate $P(X \geq 1)$ [2 marks]

[Turn over]



15 Two independent events, A and B , are such that

$$P(A) = 0.2$$

$$P(A \cup B) = 0.8$$

15 (a) (i) Find $P(B)$ [4 marks]

15 (a) (ii) Find $P(A \cap B)$ [1 mark]

15 (b) State, with a reason, whether or not the events A and B are mutually exclusive. [1 mark]

[Turn over]



16 (b) State, IN CONTEXT, two assumptions that are necessary for the distribution that you have used in part (a) to be valid. [2 marks]

END OF QUESTIONS

BLANK PAGE



BLANK PAGE

For Examiner's Use	
Question	Mark
1	
2	
3	
4	
5	
6	
7	
8	
9	
10	
11	
12	
13	
14	
15	
16	
TOTAL	

Copyright information

For confidentiality purposes, from the November 2015 examination series, acknowledgements of third-party copyright material are published in a separate booklet rather than including them on the examination paper or support materials. This booklet is published after each examination series and is available for free download from www.aqa.org.uk after the live examination series.

Permission to reproduce all copyright material has been applied for. In some cases, efforts to contact copyright-holders may have been unsuccessful and AQA will be happy to rectify any omissions of acknowledgements. If you have any queries please contact the Copyright Team, AQA, Stag Hill House, Guildford, GU2 7XJ.

Copyright © 2019 AQA and its licensors. All rights reserved.

PB/Jun19/7356/2/E1