



A-level

PHYSICS

Paper 3

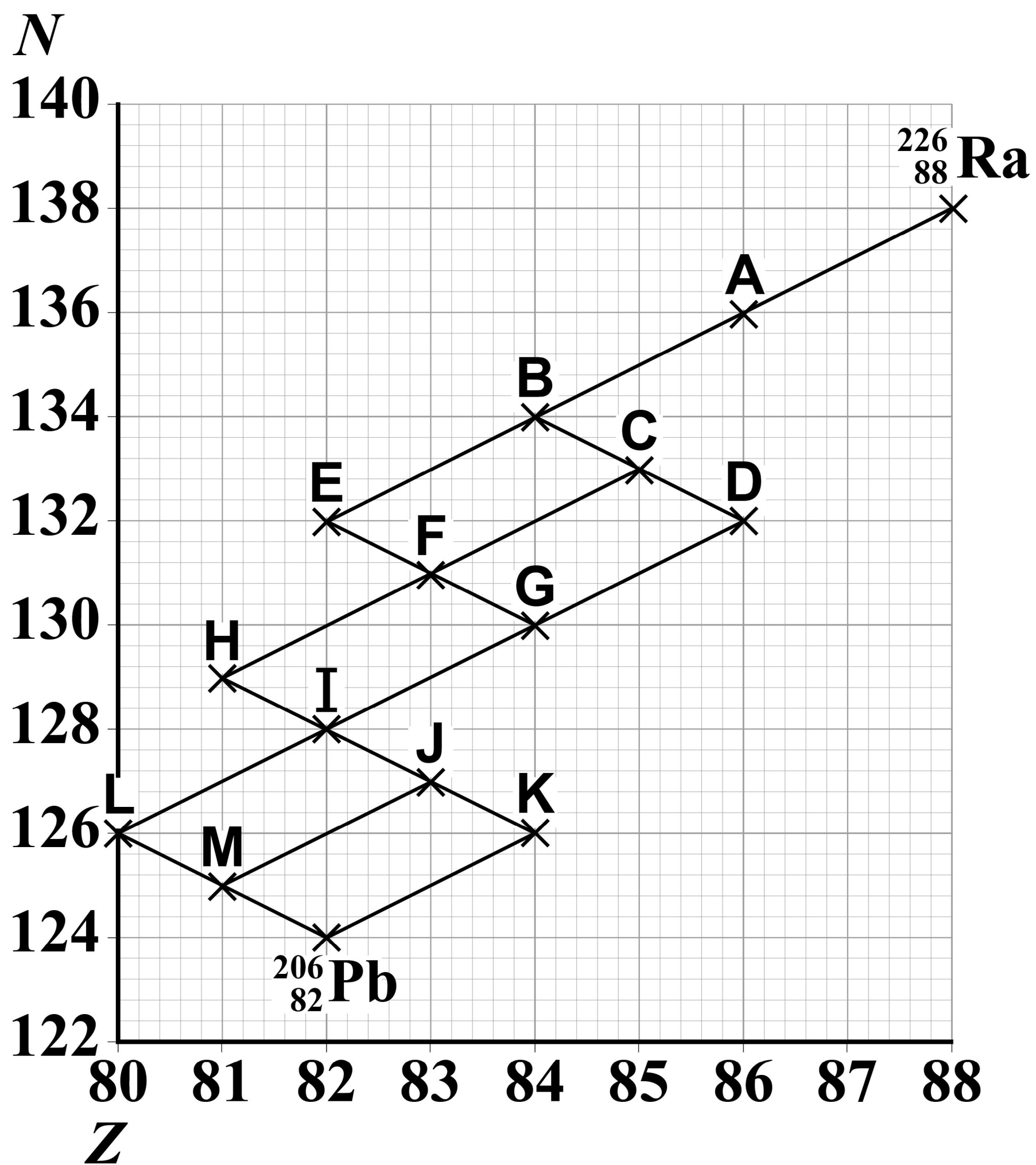
Section A

7408/3A

Diagram Booklet

[Turn over]

FIGURE 2



BLANK PAGE

[Turn over]

FIGURE 3

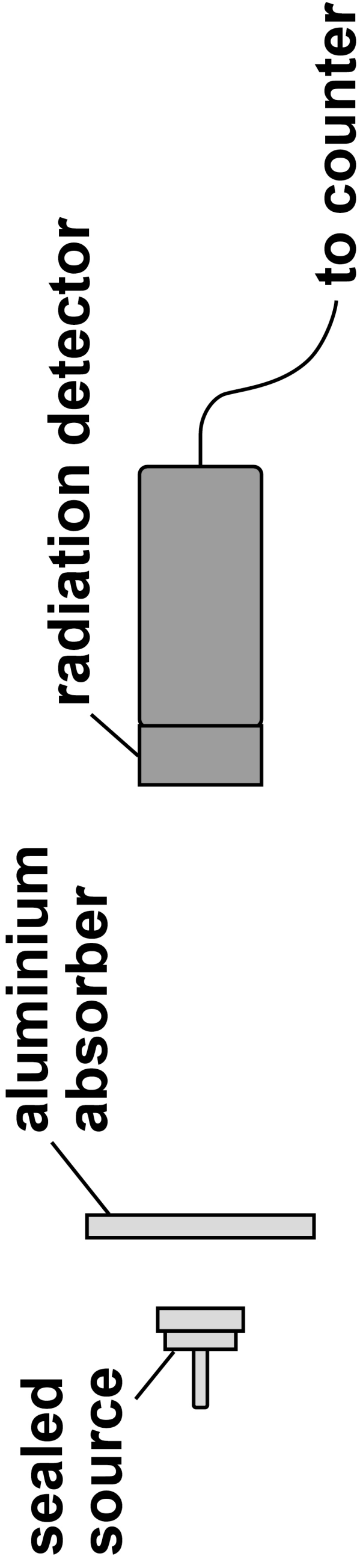


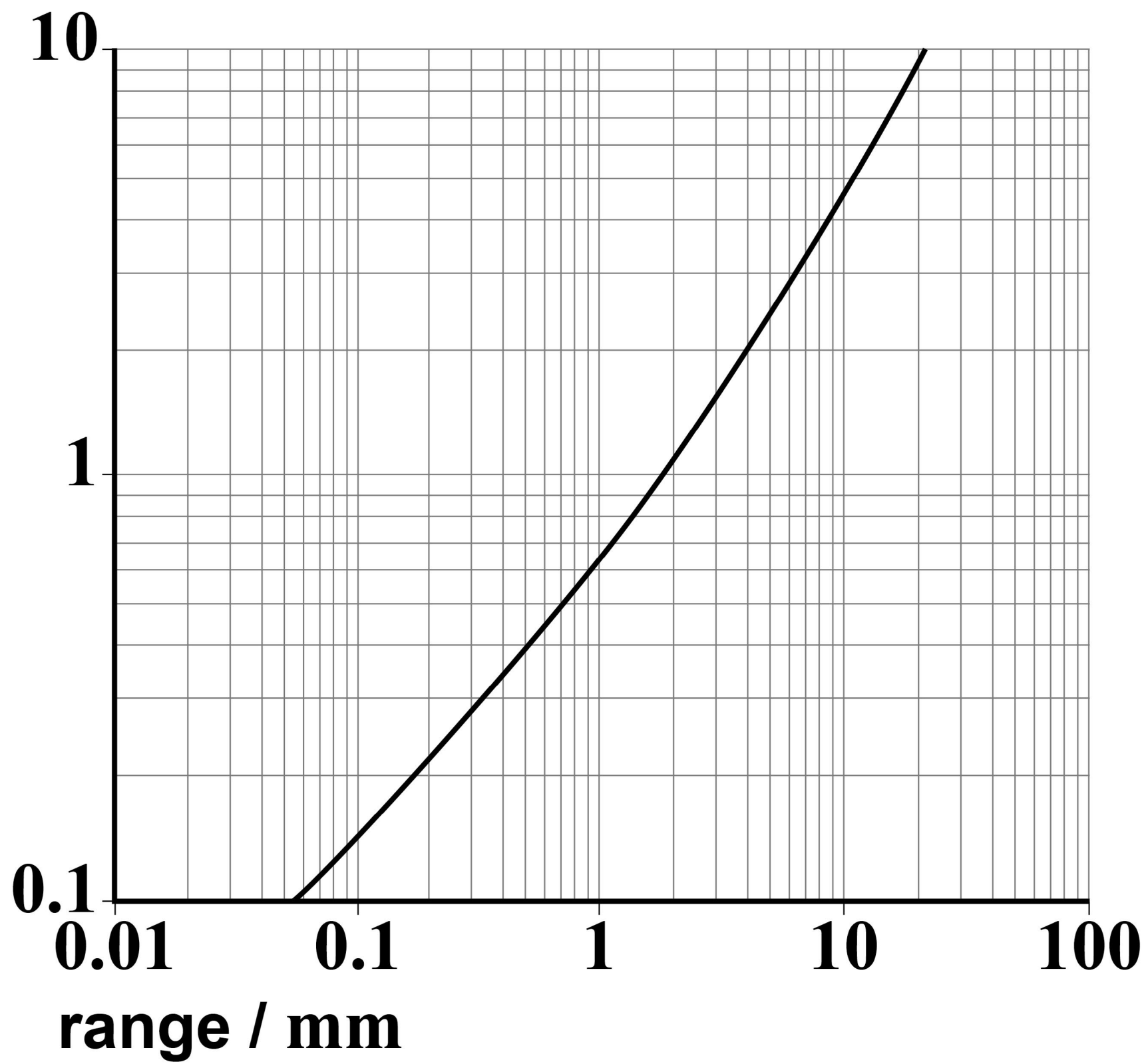
FIGURE 4 E_k / MeV **[Turn over]**

FIGURE 5

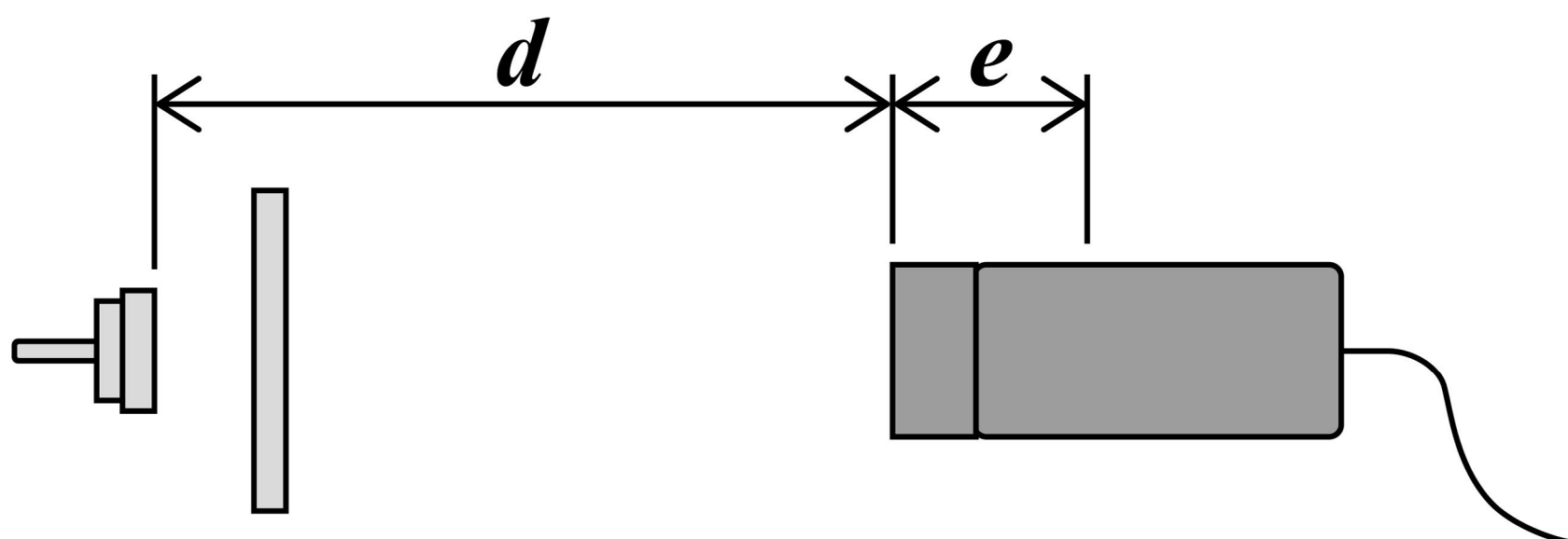


FIGURE 6 d / mm

350

300

250

200

150

100

50

0

0.0

0.2

0.4

0.6

0.8

1.0

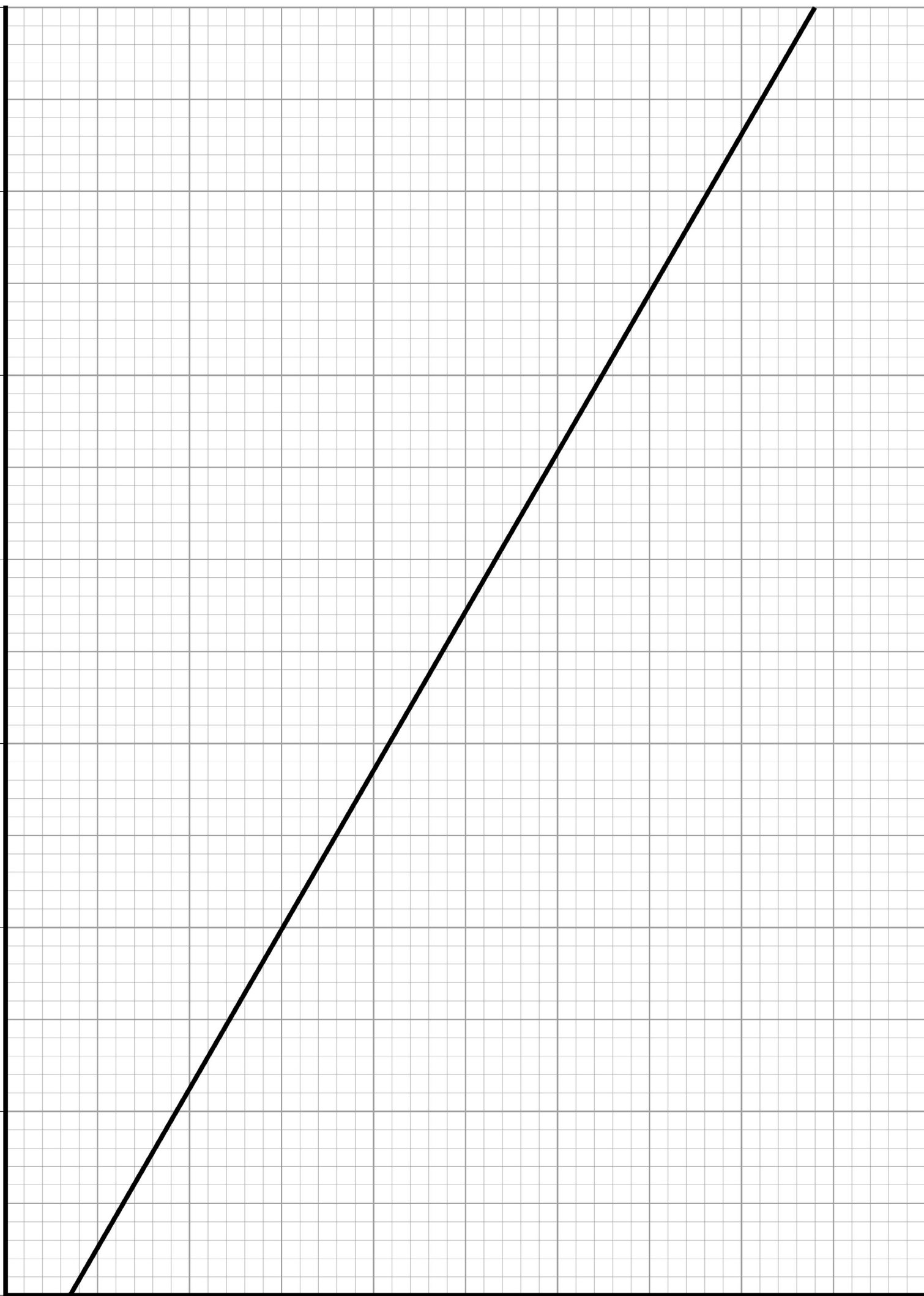
 $\frac{1}{\sqrt{A}} / \text{Bq}^{-0.5}$ **[Turn over]**

FIGURE 7

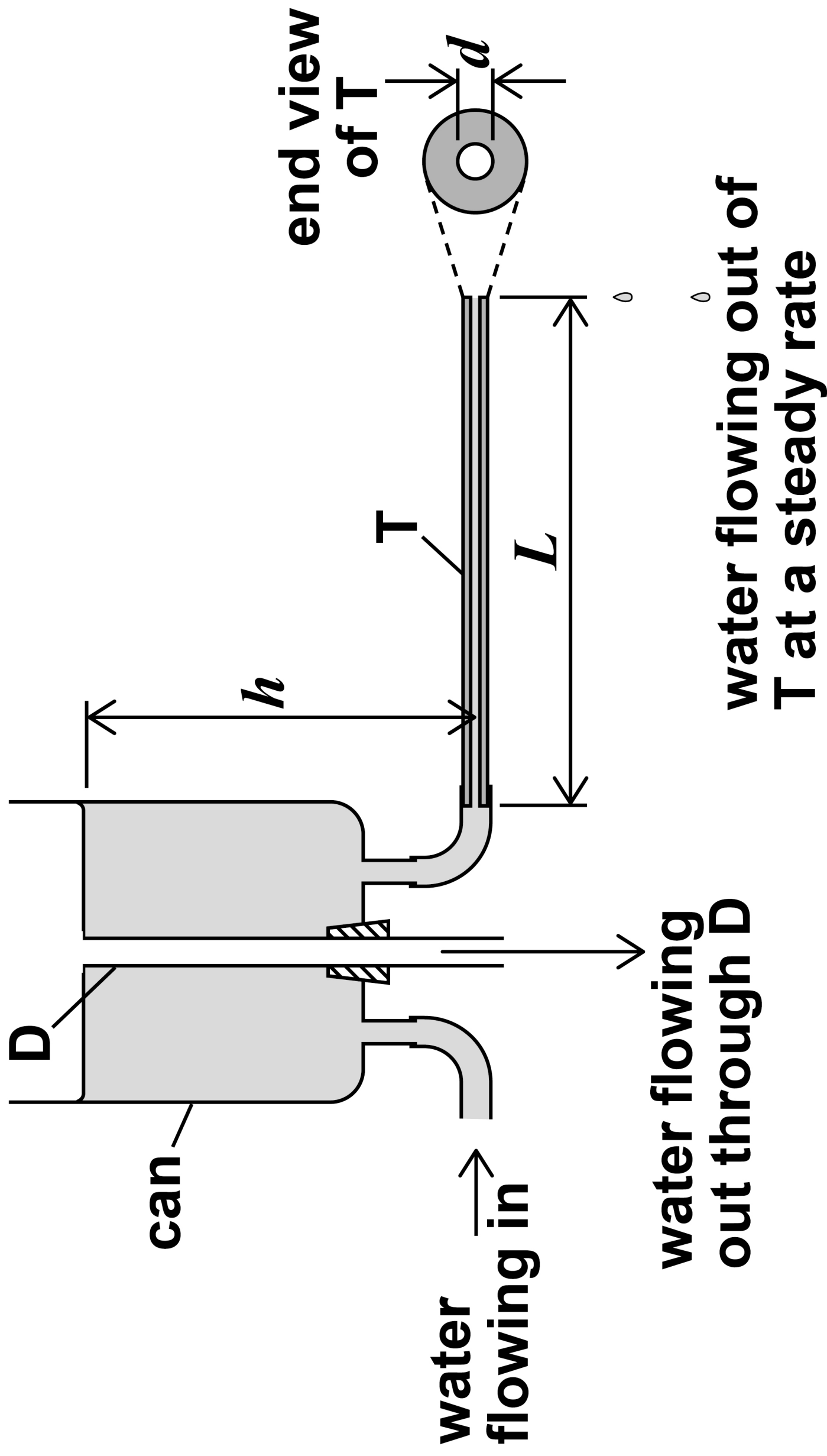
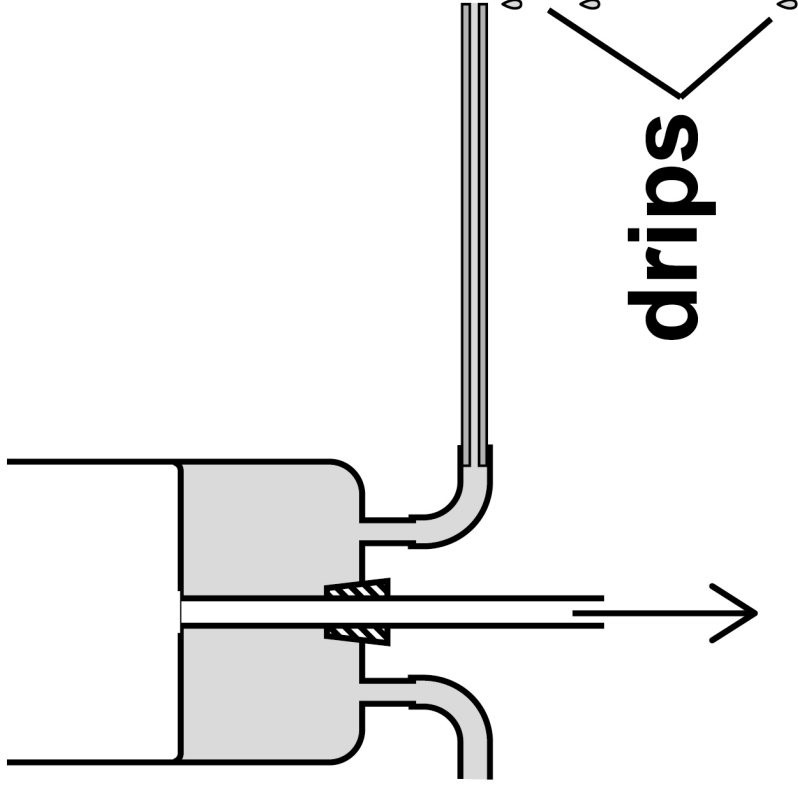
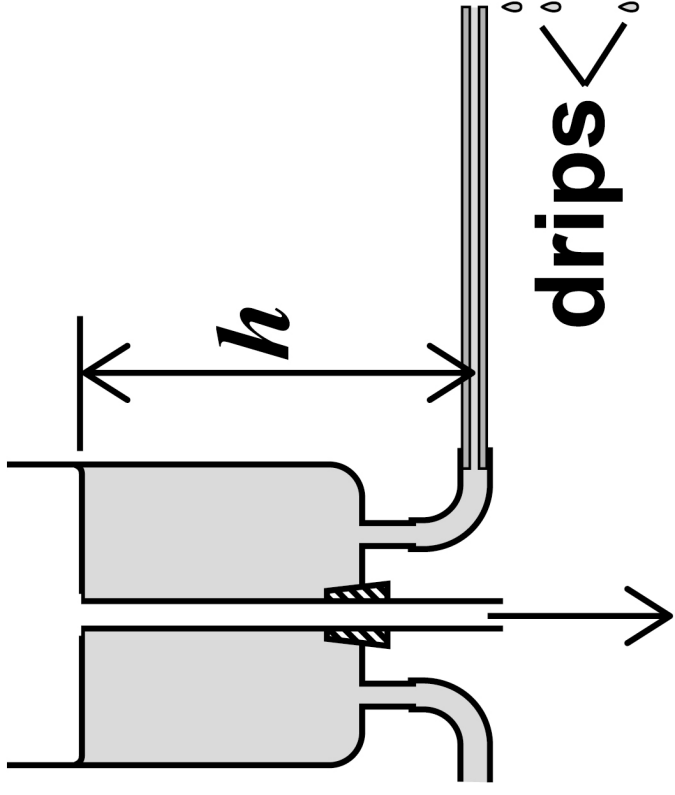


FIGURE 8



[Turn over]

FIGURE 12

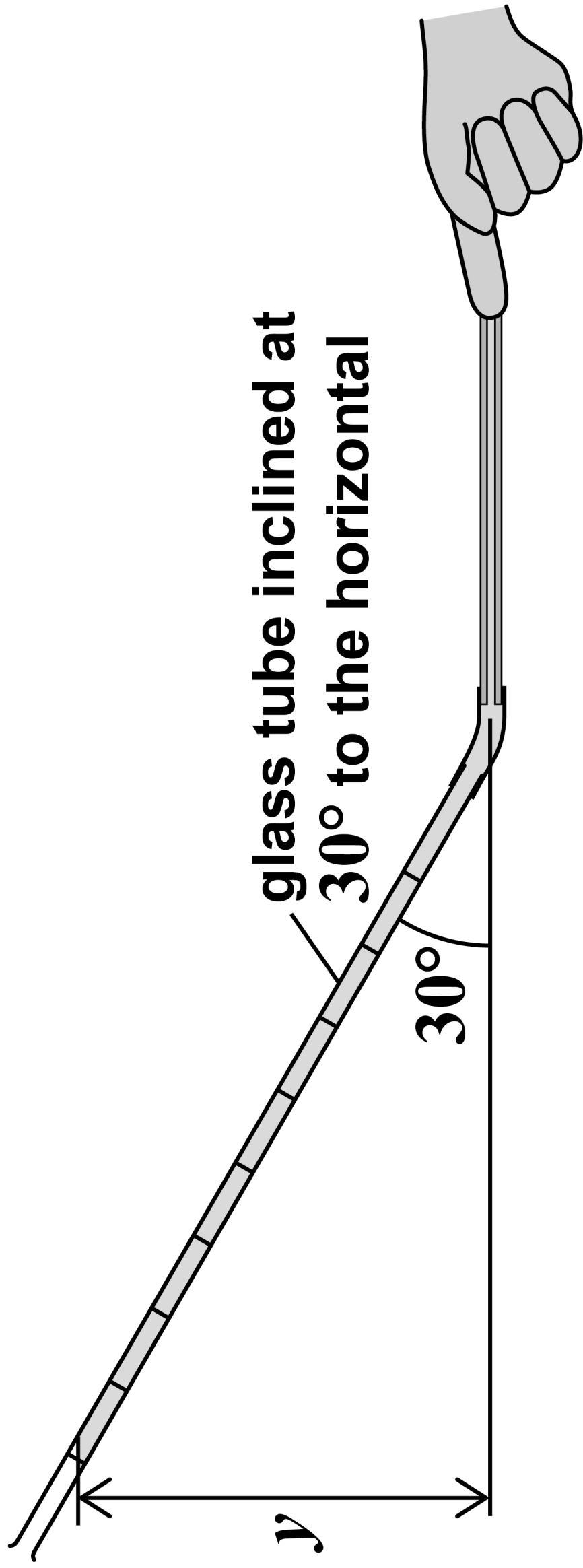
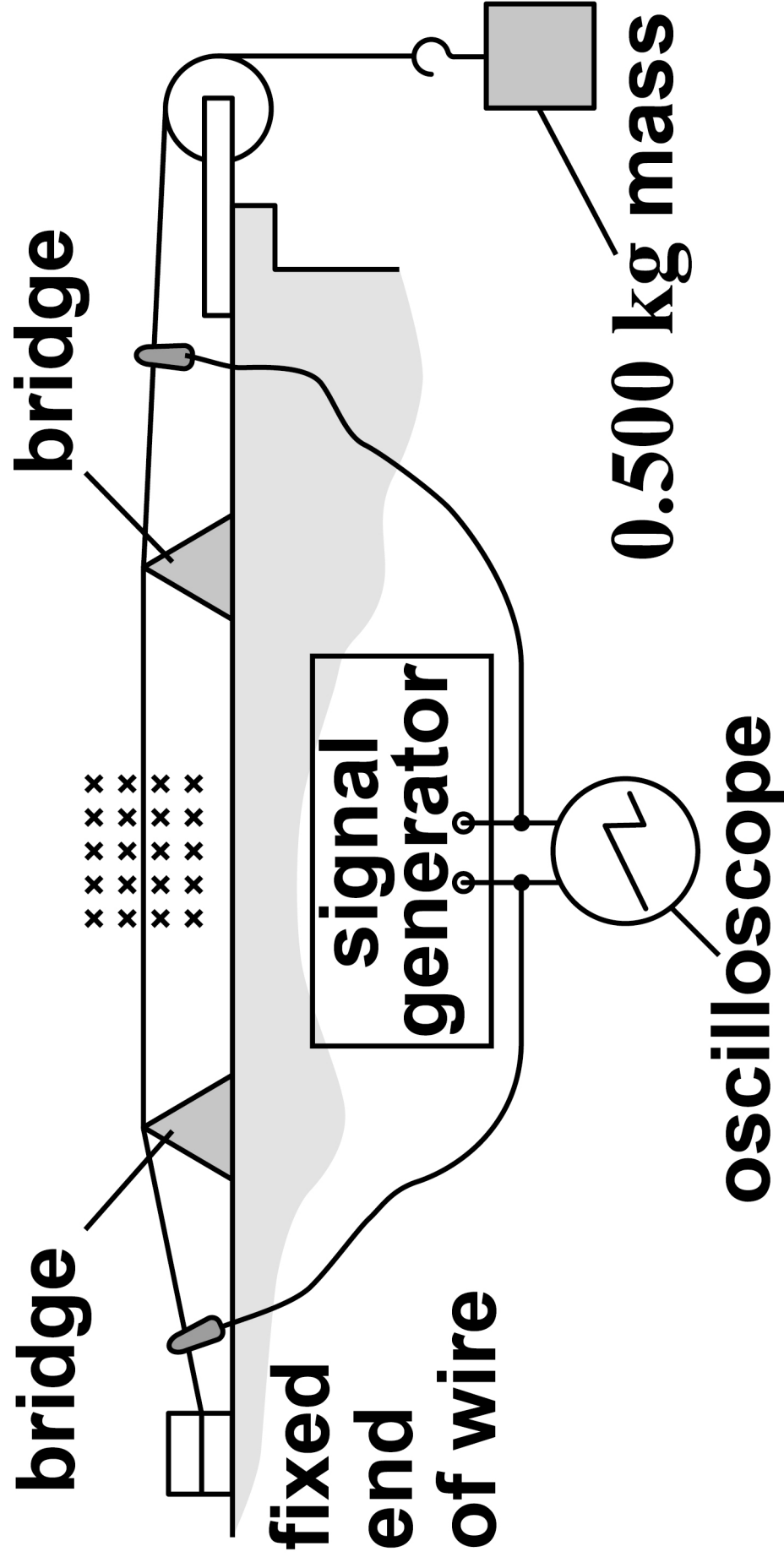


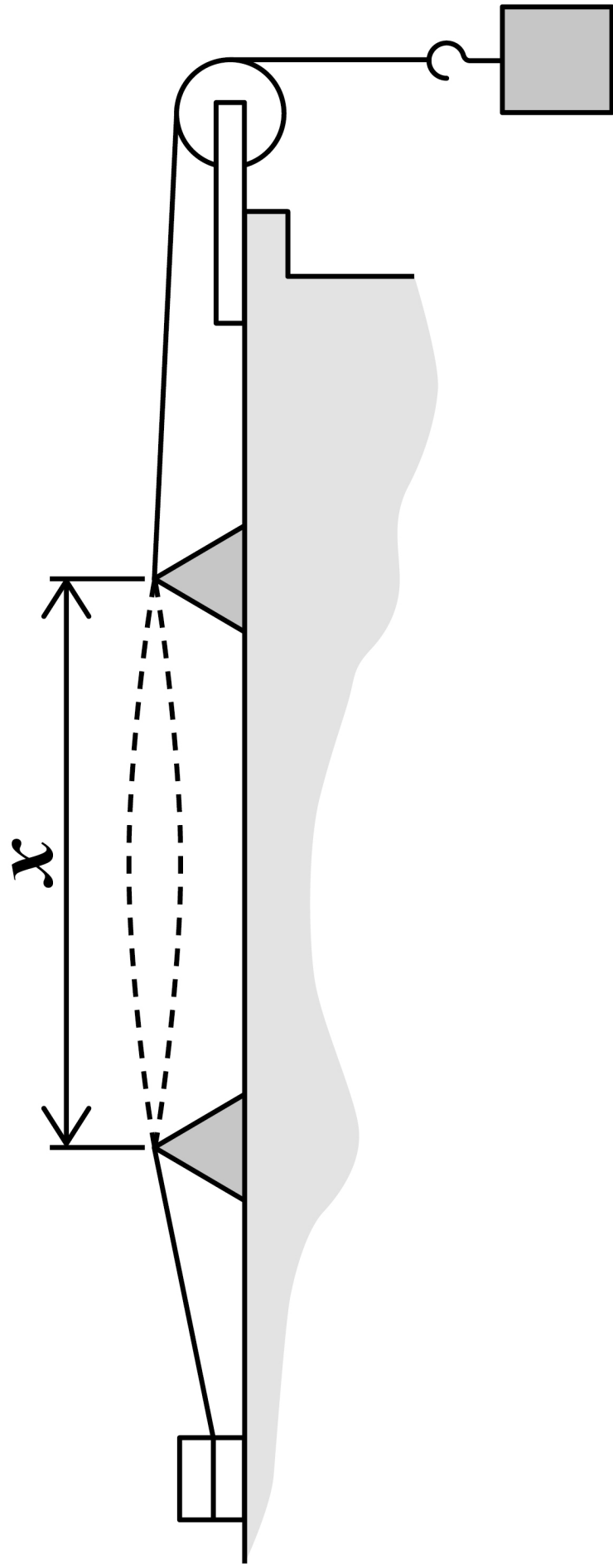
FIGURE 14

**uniform horizontal
magnetic field
perpendicular to wire**



[Turn over]

FIGURE 15



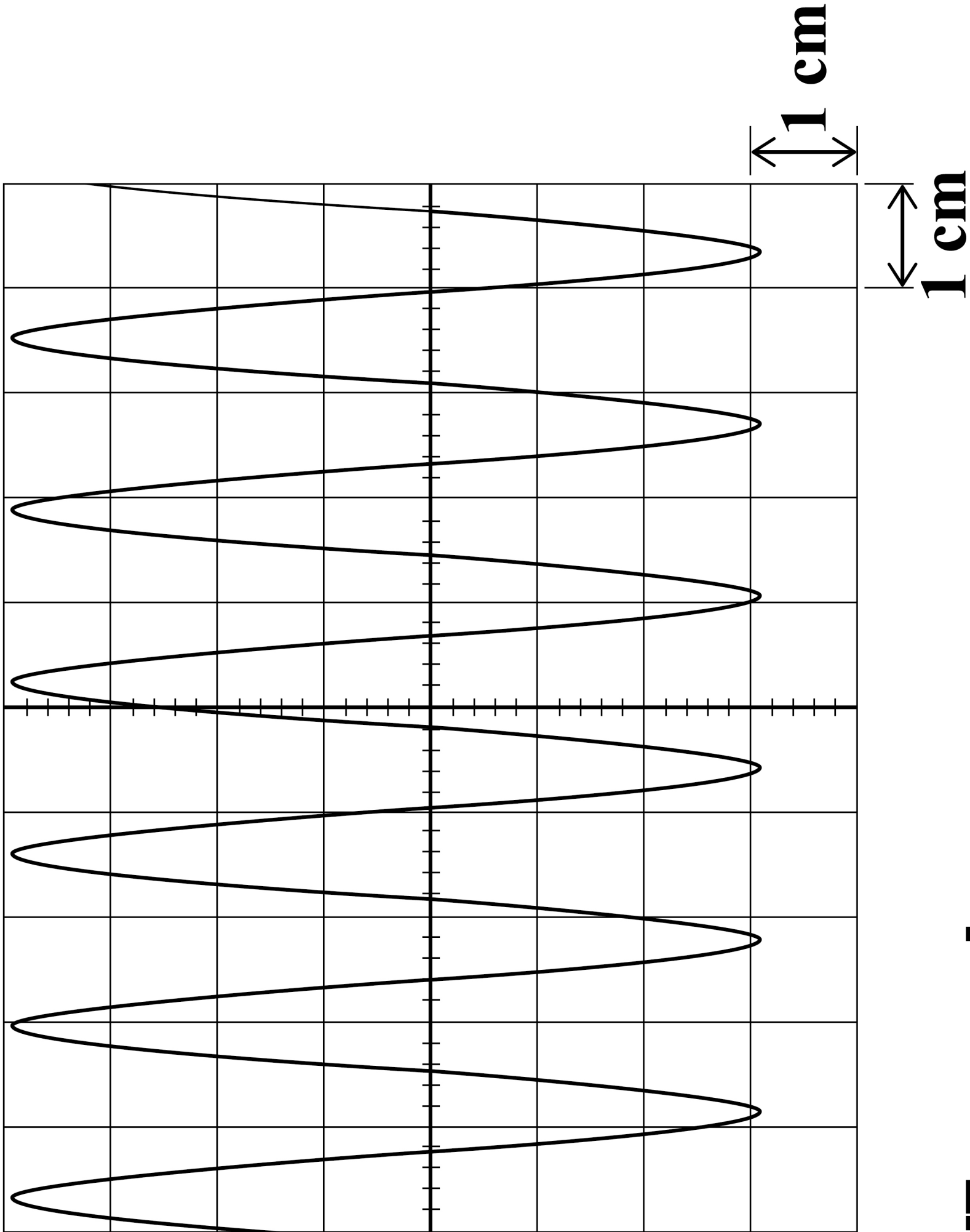


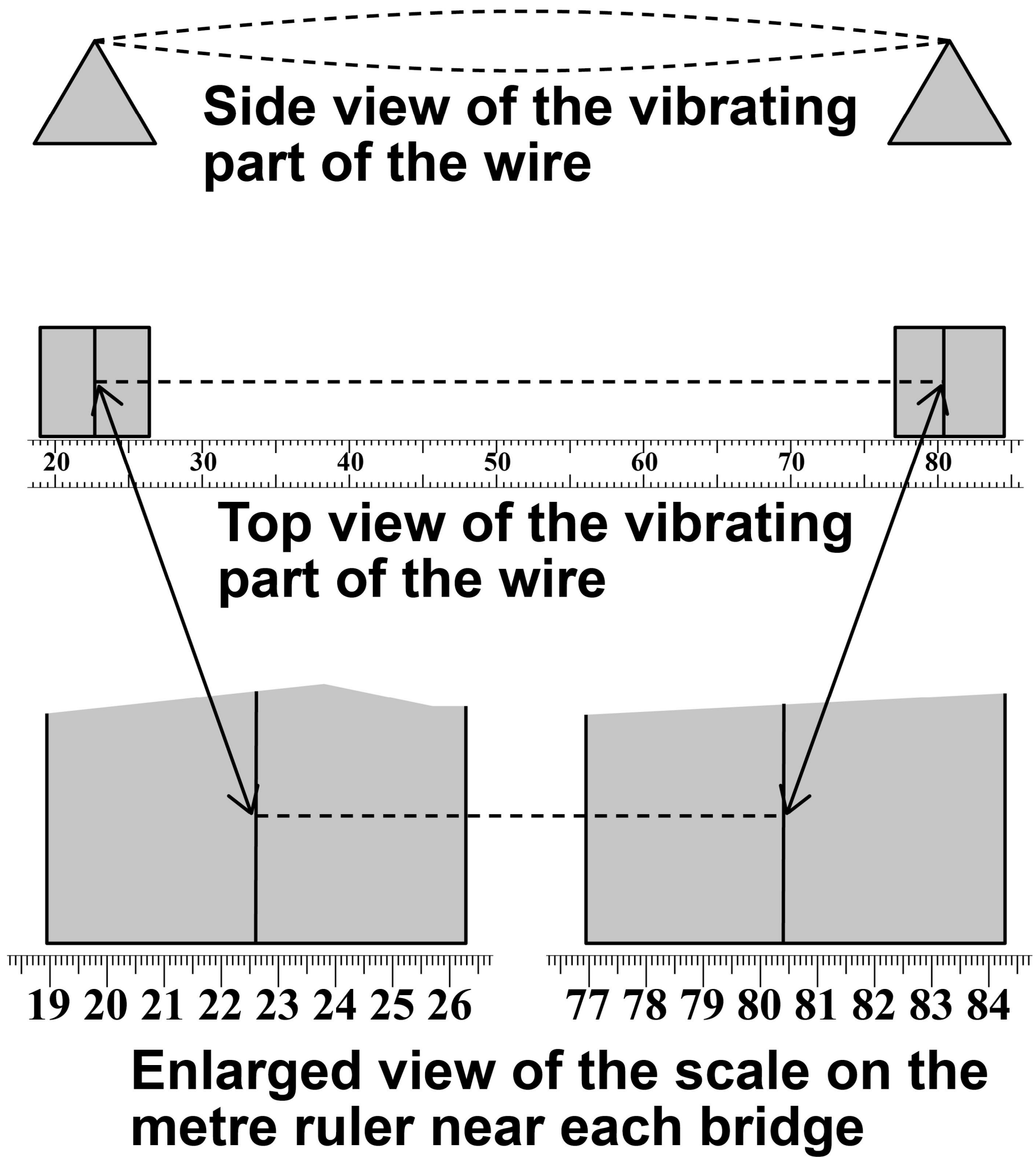
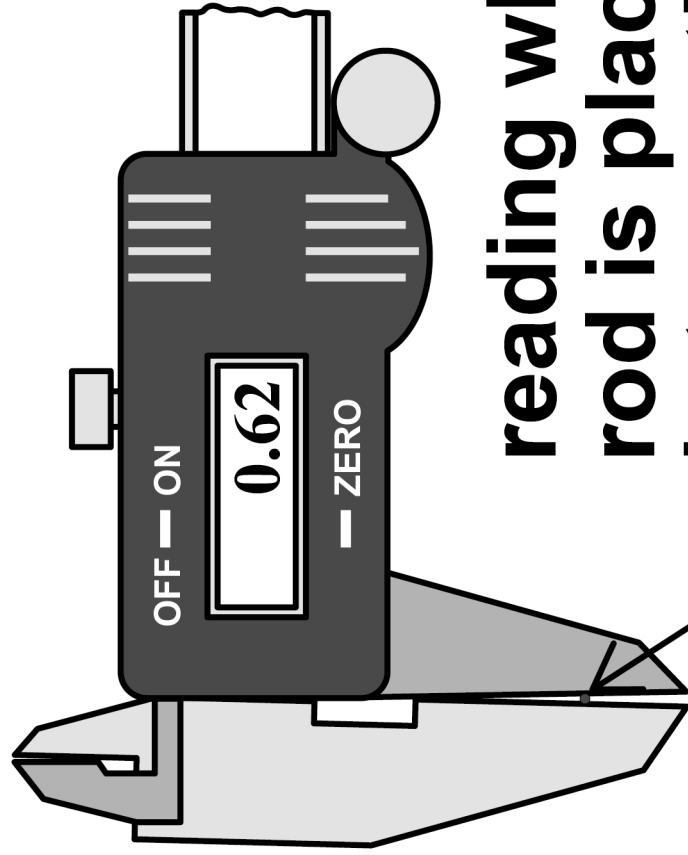
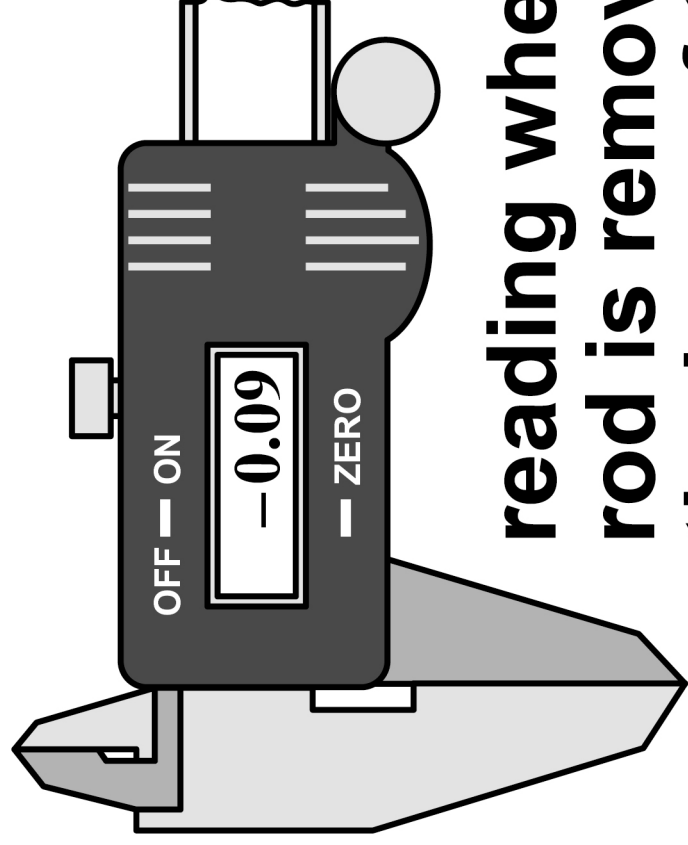
FIGURE 17

FIGURE 18



**reading when the
rod is placed
between the jaws
of the callipers**

**cylindrical
metal rod
(end view)**



**reading when the
rod is removed and
the jaws of the
callipers are closed**

END OF DIAGRAMS

BLANK PAGE

Copyright information

For confidentiality purposes, from the November 2015 examination series, acknowledgements of third-party copyright material are published in a separate booklet rather than including them on the examination paper or support materials. This booklet is published after each examination series and is available for free download from www.aqa.org.uk after the live examination series.

Permission to reproduce all copyright material has been applied for. In some cases, efforts to contact copyright-holders may have been unsuccessful and AQA will be happy to rectify any omissions of acknowledgements. If you have any queries please contact the Copyright Team, AQA, Stag Hill House, Guildford, GU2 7XJ.

Copyright © 2019 AQA and its licensors. All rights reserved.

IB/M/CD/Jun19/7408/3A/INS/E1

