



**GCSE
GEOGRAPHY**

**Paper 1 Living with the
Physical Environment**

8035/1

Insert

[Turn over]

FIGURE 1 – For use with Question 1

Number of typhoons

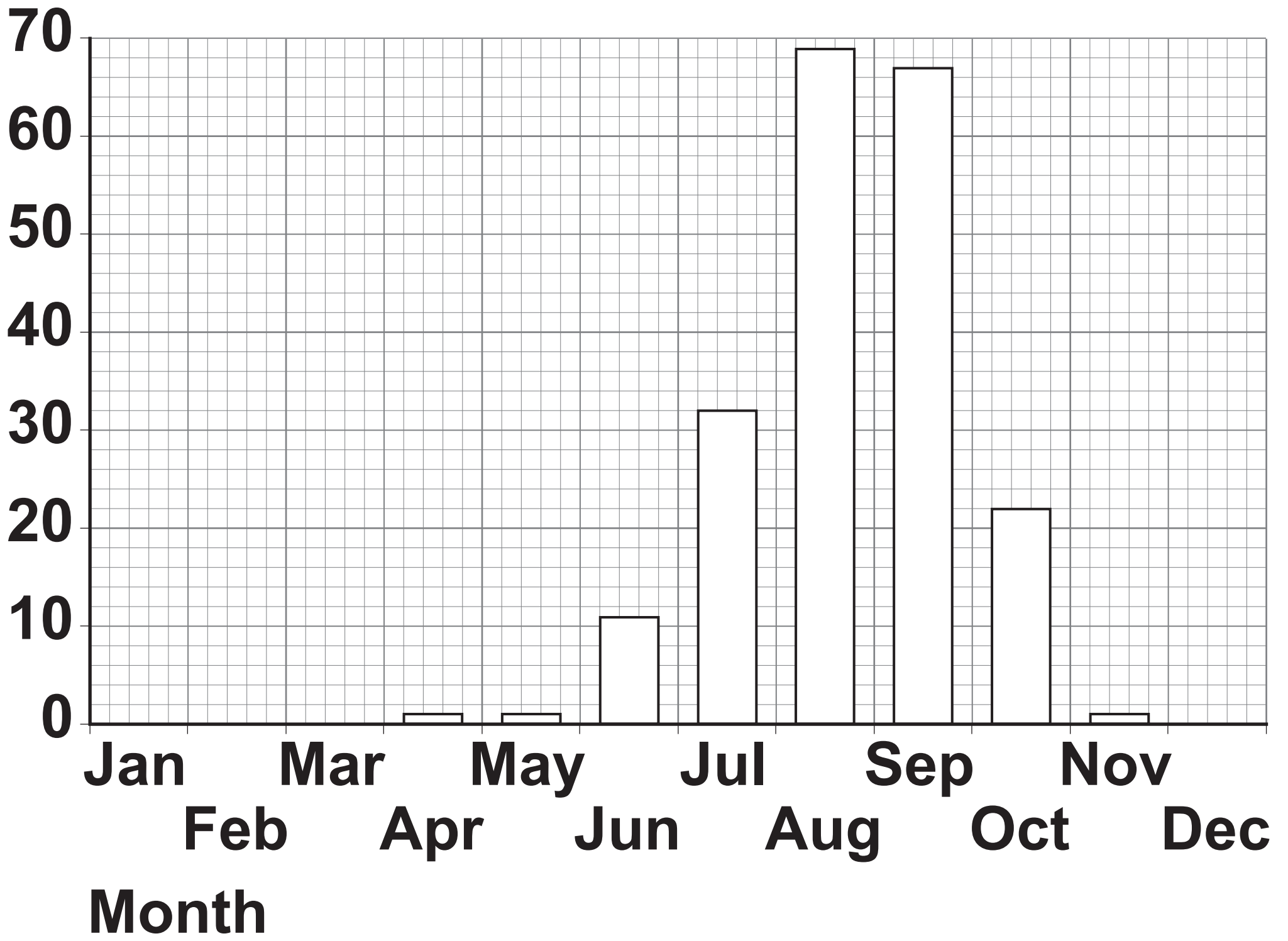
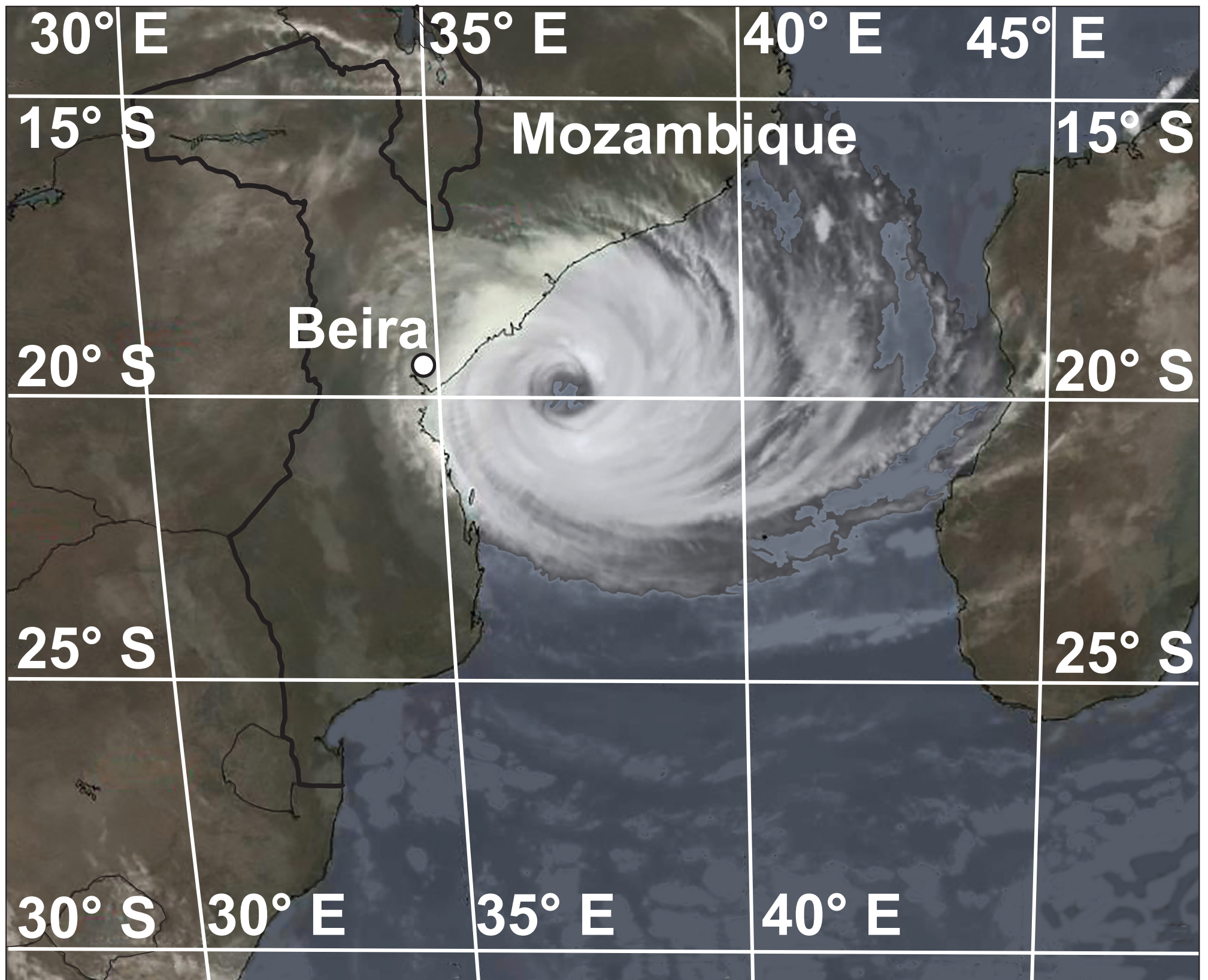


FIGURE 2 – For use with Question 1



KEY

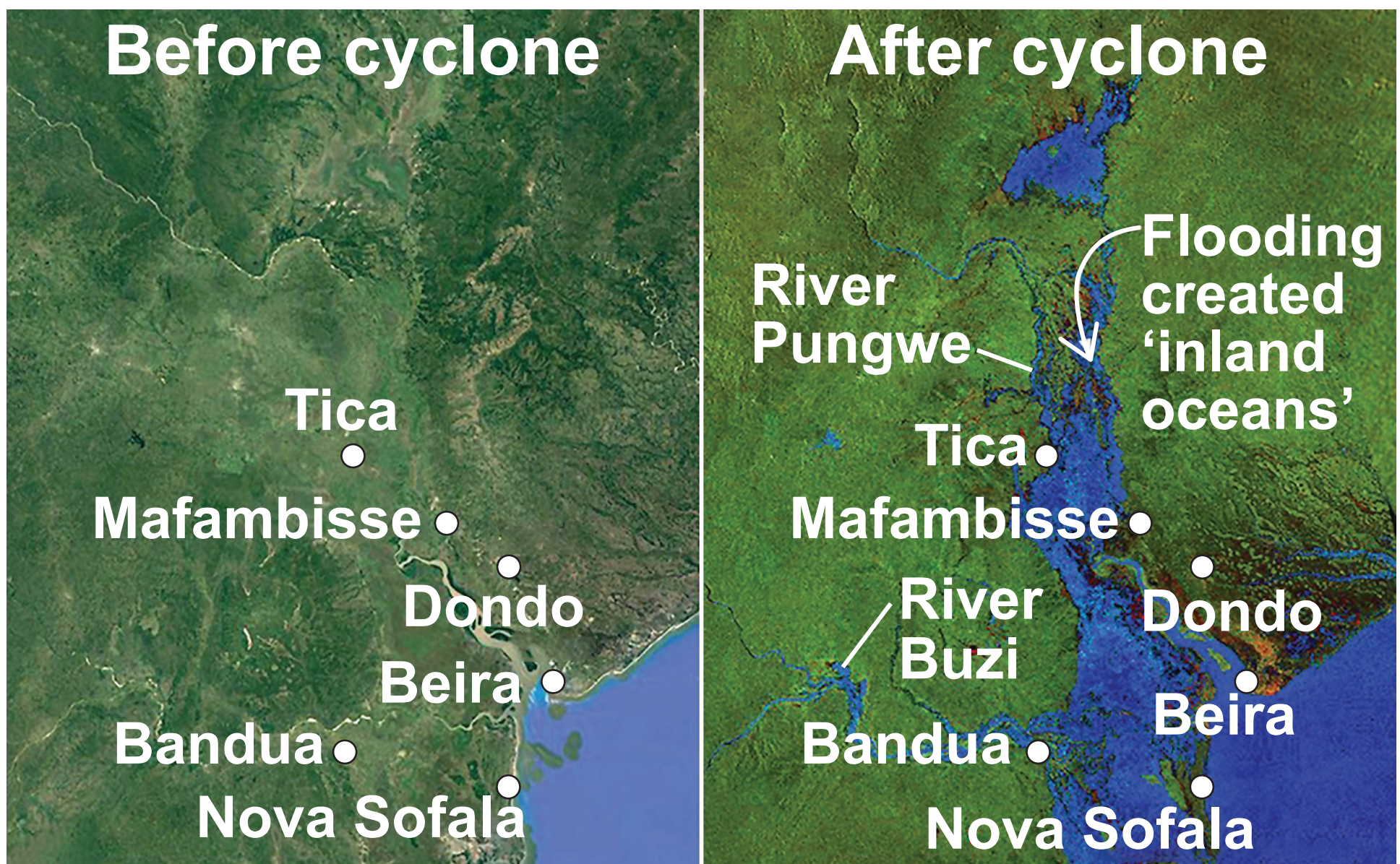
○ Settlement

0 500 km



[Turn over]

FIGURE 3 – For use with Question 1



0 10 km



KEY ○ Settlement

Cyclone Idai

Wind speeds of up to 200 km per hour

Over 150 mm of rain in 24 hours

1300 deaths

Over 1 million people displaced

90% of city of Beira damaged or destroyed

Cholera outbreak, with 5000 people affected

Total damage US\$2.2 billion

Mozambique data

GNI US\$1153 per person per year

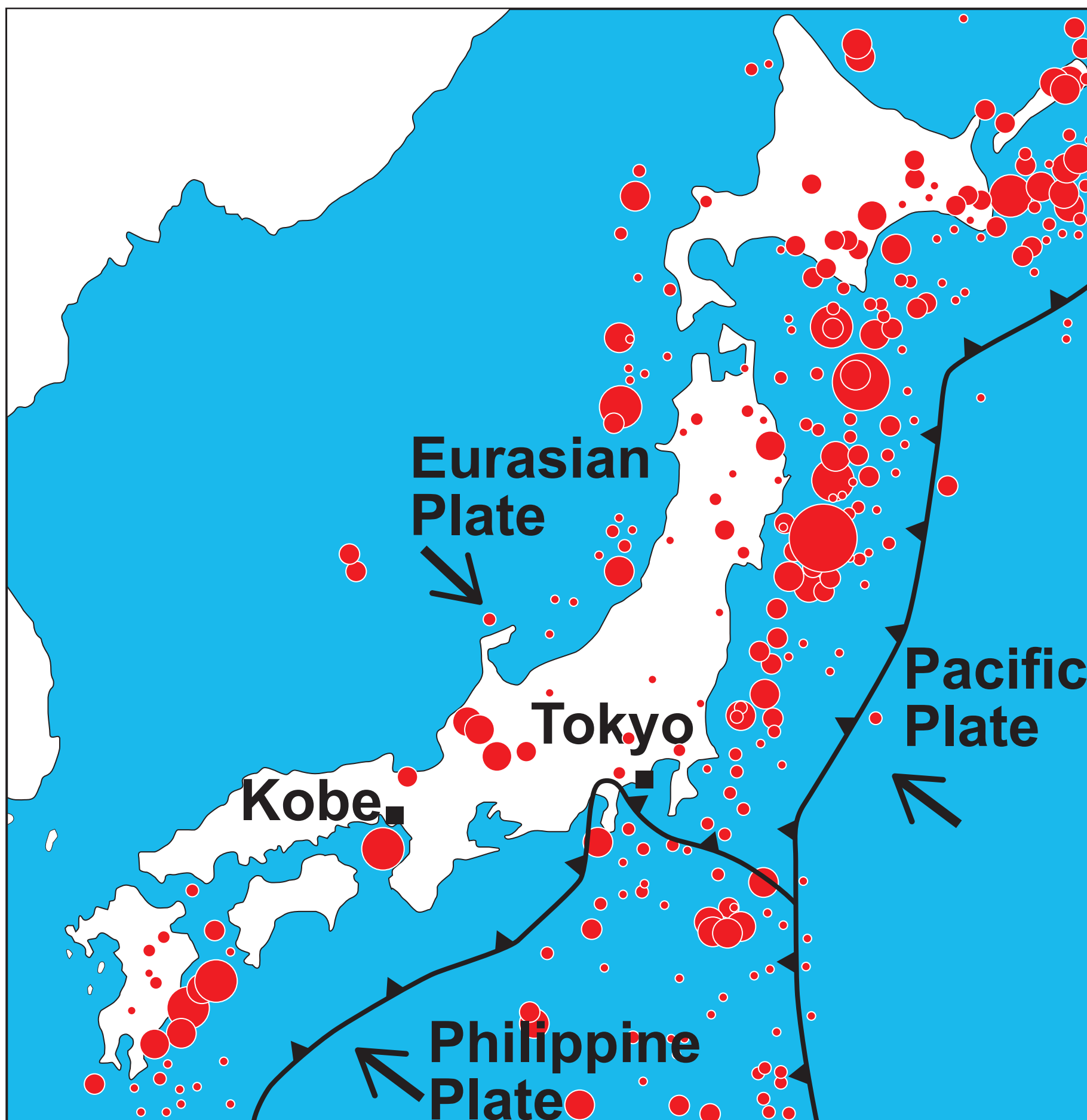
**80% of the population lives on less than
US\$2 a day**



**An image shows a flooded area containing
the remains of wooden houses.**

[Turn over]

FIGURE 4 – For use with Question 1



KEY

▲ Plate boundary

→ Direction of plate movement

■ City

0 200 km

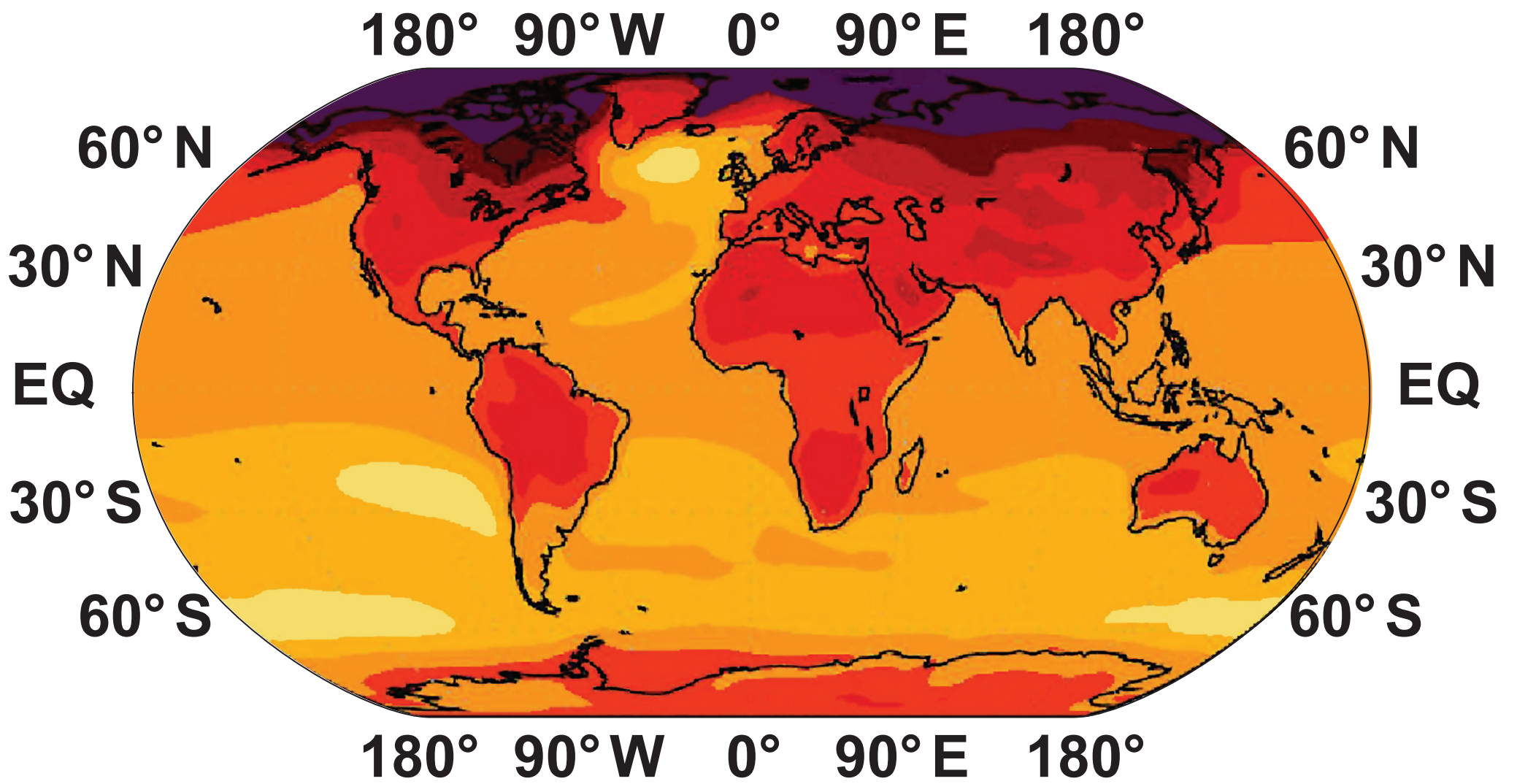


**Strength
(Richter
Scale)**

= 3 4 5 6 7 8 9

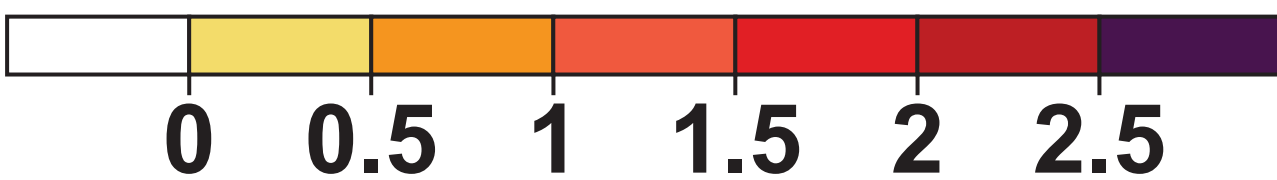


FIGURE 5 – For use with Question 1



KEY

Temperature change in °C



EQ = Equator

[Turn over]

FIGURE 6 – For use with Question 1

**Carbon Capture image
cannot be reproduced here due to
third-party copyright restrictions.**

**Carbon Capture image
cannot be reproduced here due to
third-party copyright restrictions.**

[Turn over]

FIGURE 7 – For use with Question 2**PLACE A**

Month	Jan	Feb	Mar	Apr	May	Jun
Rainfall (mm)	3	2	1	1	0	1
Average temperature (°C)	16.0	16.7	17.9	18.6	20.3	21.4

Month	Jul	Aug	Sep	Oct	Nov	Dec
Rainfall (mm)	0	0	0	4	7	8
Average temperature (°C)	23.3	23.9	23.3	22.3	20.1	15.4

PLACE B

Month	Jan	Feb	Mar	Apr	May	Jun
Rainfall (mm)	16	20	21	12	9	11
Average temperature (°C)	-14.0	-14.5	-13.3	-10.6	-3.5	2.6

Month	Jul	Aug	Sep	Oct	Nov	Dec
Rainfall (mm)	16	28	26	17	19	18
Average temperature (°C)	6.2	5.1	1.0	-4.9	-8.7	-12.2

[Turn over]

FIGURE 8 – For use with Question 2

**Map showing The Great Green Wall
tree-planting scheme and
Image showing person building
rock walls (Bunds)
cannot be reproduced here due to third-
party copyright restrictions.**

BLANK PAGE

[Turn over]

FIGURE 9 – For use with Question 2

**Image of Brown Bear
cannot be reproduced here due to
third-party copyright restrictions.**

BLANK PAGE

[Turn over]

FIGURE 10 – For use with Question 2

Brazil wildfires release stored carbon, scientists warn

2019 has seen an increase in illegal burning in the Brazil rainforest as farmers and loggers use fires to clear land. Scientists warn that these fires are a major threat to global climate.



KEY

■ Capital city

● Active wildfires
22 – 23 Aug

N
↑
+

0 300 km

BLANK PAGE

[Turn over]

FIGURE 11 – For use with Question 2**Shifting cultivation**

An image shows an area of deforestation. The ground is exposed and smoke from small fires is shown. In the background remaining forest is shown.

Palm oil plantation in Indonesia

An image shows an area of grassland containing palm plants. In the background forest is shown.

Ecotourism resort in the Amazon



An image shows a resort within a rainforest. The buildings and paths are constructed from wood and the roofs are thatched.

Hydro-electric dam in Brazil



An image shows an aerial view of a large area of water. The water is contained by a large dam. Some water is shown flowing through the dam.

[Turn over]

FIGURE 12 – For use with Question 3



KEY

 **Uplands and mountains**

 **River**

 **National borders**

 **Highest point (m)**

0  **100 km**

N

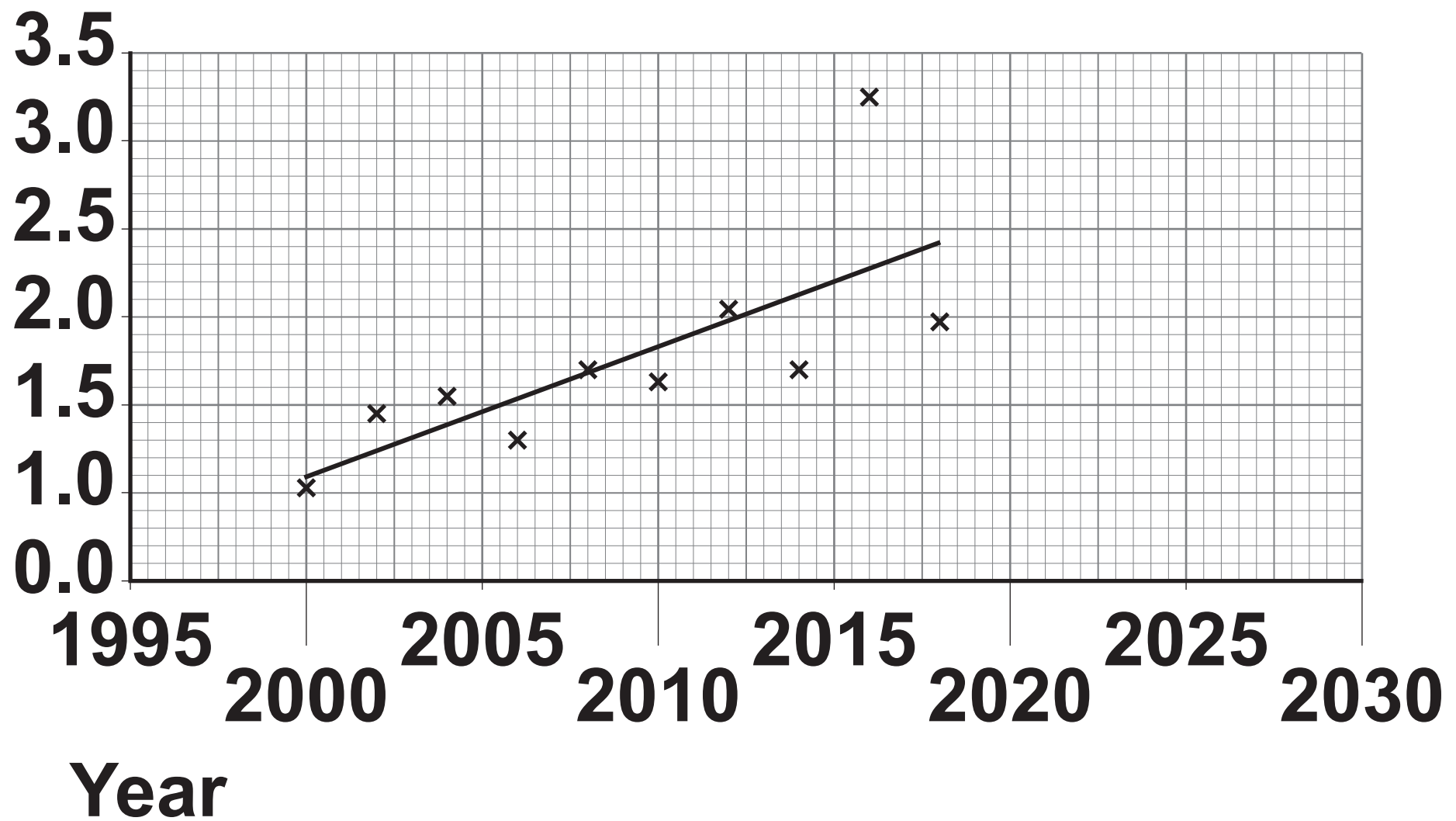

[Turn over]

FIGURE 13 – For use with Question 3



FIGURE 14 – For use with Question 3

**Rate of erosion
(metres
per year)**



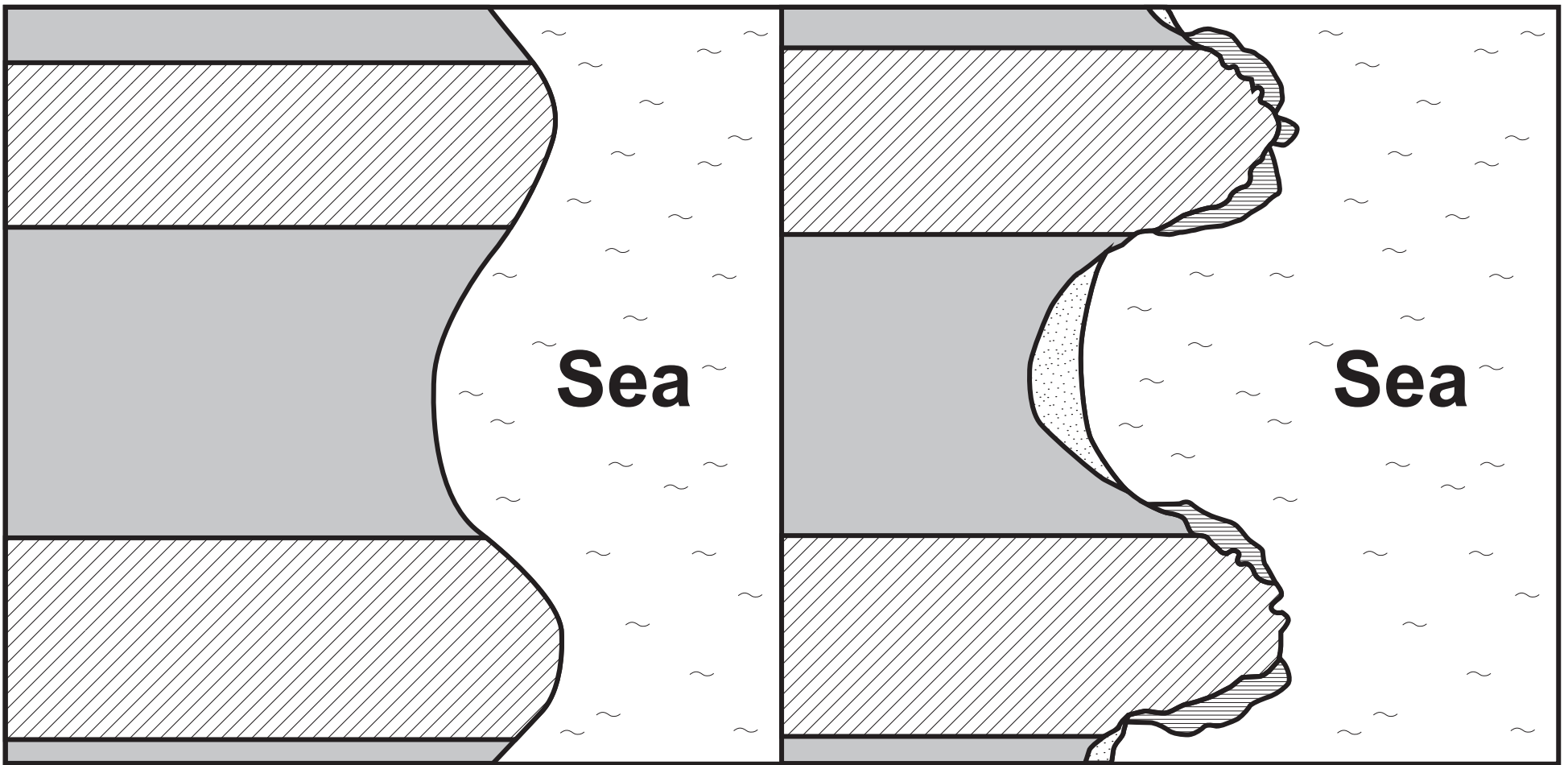
[Turn over]

FIGURE 15 – For use with Question 3



Before

After



KEY

 **Harder rock**

 **Softer rock**

 **Beach**

 **Wave-cut platform**

[Turn over]

FIGURE 16 – For use with Question 4



KEY

 **Uplands and mountains**

 **River**

 **National borders**

 **Highest point (m)**

0  **100 km**

N

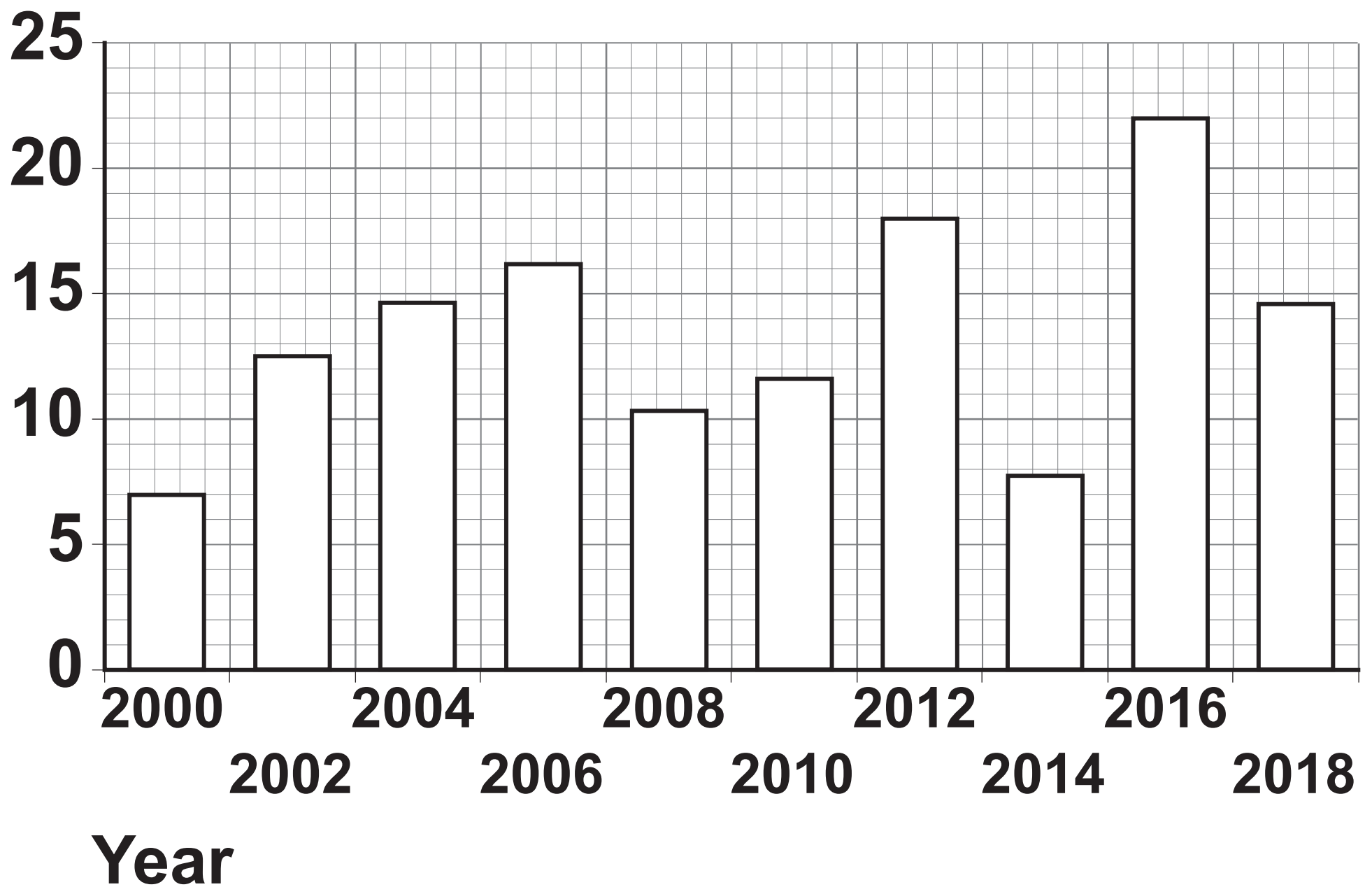

[Turn over]

FIGURE 17 – For use with Question 4



FIGURE 18 – For use with Question 4

**Maximum
discharge
(in cubic
metres per
second)**



[Turn over]

FIGURE 19 – For use with Question 4

An image shows a view along a road with houses and trees on either side. The road is flooded. A Christmas tree is shown in the middle of the flooded road.

Flood risk factors

- **340 millimetres of rain fell in the area in 24 hours.**
- **Cockermouth is located at the confluence (meeting point) of two rivers.**
- **The surrounding landscape consists of steep hills.**
- **Many homes and businesses are built on the flood plains of the local rivers.**

BLANK PAGE

[Turn over]

FIGURE 20 – For use with Question 5



KEY

 **Uplands and mountains**

 **River**

 **National borders**

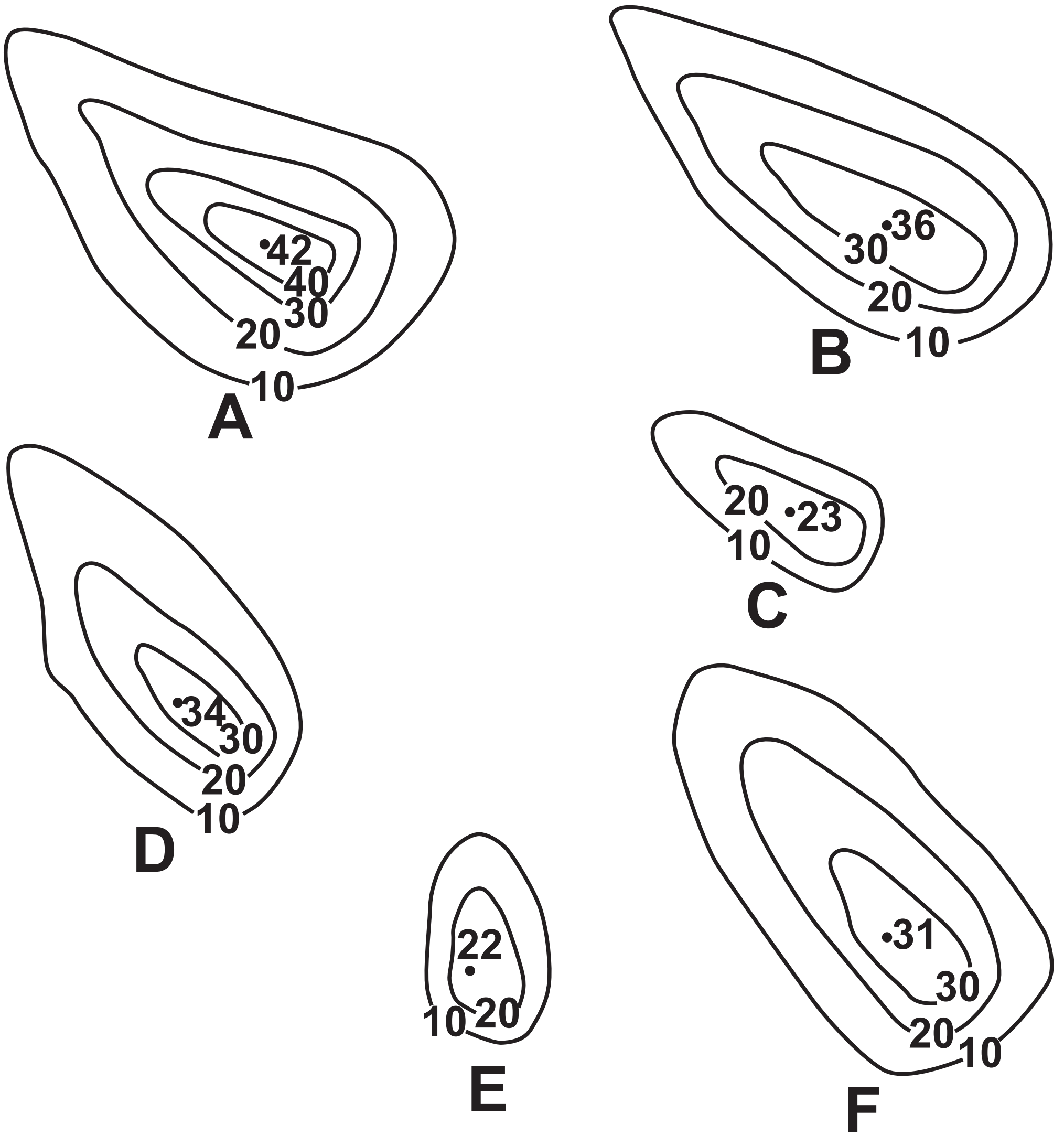
 **Highest point (m)**

0  **100 km**

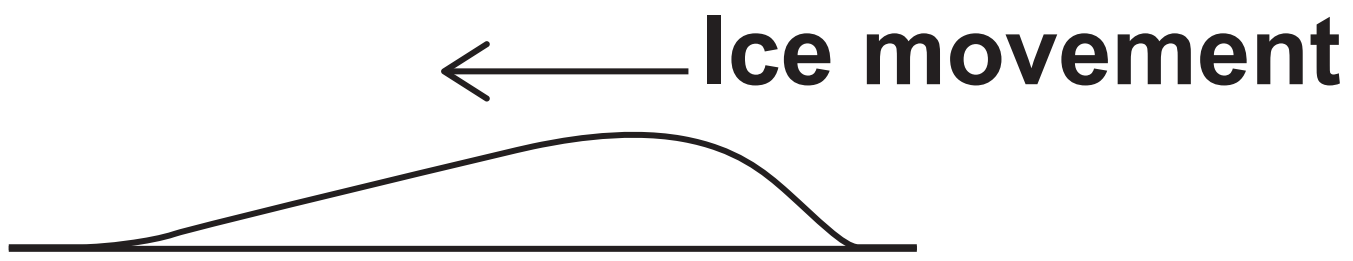
N


[Turn over]

FIGURE 21 – For use with Question 5



Section through a drumlin



KEY

-10- Contour (metres)

22 Maximum height (metres)



[Turn over]

FIGURE 22 – For use with Question 5

**Image showing landform of
glacial erosion (Corrie)
cannot be reproduced here due to
third-party copyright restrictions.**

END OF SOURCES

BLANK PAGE

BLANK PAGE

Copyright information

For confidentiality purposes, all acknowledgements of third-party copyright material are published in a separate booklet. This booklet is published after each live examination series and is available for free download from www.aqa.org.uk.

Permission to reproduce all copyright material has been applied for. In some cases, efforts to contact copyright-holders may have been unsuccessful and AQA will be happy to rectify any omissions of acknowledgements. If you have any queries please contact the Copyright Team.

Copyright © 2020 AQA and its licensors. All rights reserved.

G/KL/Jun20/8035/1/Insert/E1

