



Surname _____

Other Names _____

Centre Number _____

Candidate Number _____

Candidate Signature _____

I declare this is my own work.

GCSE

PSYCHOLOGY

Paper 2 Social Context and Behaviour

8182/2

Friday 5 June 2020

Afternoon

Time allowed: 1 hour 45 minutes

At the top of the page, write your surname and other names, your centre number, your candidate number and add your signature.

[Turn over]



For this paper you may use:

- a calculator.

INSTRUCTIONS

- **Use black ink or black ball-point pen.**
- **Answer ALL questions.**
- **You must answer the questions in the spaces provided. Do not write on blank pages.**
- **If you need extra space for your answer(s), use the lined pages at the end of this book. Write the question number against your answer(s).**
- **Do all rough work in this book. Cross through any work you do not want to be marked.**



INFORMATION

- The marks for questions are shown in brackets.
- The maximum mark for this paper is 100.
- Question 14 is a synoptic question in which you will be rewarded for your ability to draw together different areas of knowledge and understanding from across the full course of study.
- Questions should be answered in continuous prose. You will be assessed on your ability to:
 - use good English
 - organise information clearly
 - use specialist vocabulary where appropriate.

DO NOT TURN OVER UNTIL TOLD TO DO SO



SECTION A

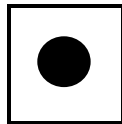
Social influence

Answer ALL questions in the spaces provided.

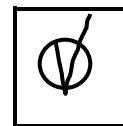
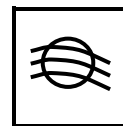
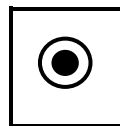
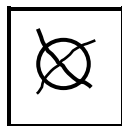
Only ONE answer per question is allowed, except where stated otherwise.

For each question completely fill in the circle alongside the appropriate answer.

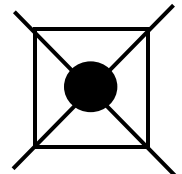
CORRECT METHOD



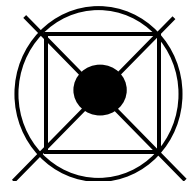
WRONG METHODS



If you want to change your answer you must cross out your original answer as shown.



If you wish to return to an answer previously crossed out, ring the answer you now wish to select as shown.



0	1
---	---

Which TWO of the following statements about conformity are correct?

Shade TWO boxes. [2 marks]

A Conformity is when people follow the orders of someone in a position of authority.

B Group size does not affect how likely people are to conform.

C People are more likely to conform when the task they are doing is difficult.

D People are more likely to conform when they have a high level of expertise in the task they are doing.

E Personality can affect how likely people are to conform.

[Turn over]



02.1 You have been asked to design an experiment to investigate the effect of anonymity on conformity.

In your answer outline the following information:

- **what your independent AND dependent variables would be**
- **one thing you would do to standardise your procedure AND why this would benefit your research**
- **the results you would expect to find from your experiment.**

[6 marks]

02.2 When carrying out the experiment you have outlined in your answer to Question 02.1, you should consider ethical issues.

Identify TWO ethical issues that you would need to consider.

Suggest ONE appropriate way of dealing with EACH of the issues you identify. [4 marks]

Ethical issue one _____

Ethical issue two _____

[Turn over]



03

Read the following information.

A psychologist wanted to understand more about bystander behaviour. She carried out a study to see if someone's appearance would affect how quickly people helped them when they fell over.

In condition 1, an actor fell over in a public place. He was using a crutch and pretending to have a broken leg.

In condition 2, an actor fell over in a public place. He was pretending to be drunk.

The psychologist recorded how long it took for people to offer help to the actor in both conditions.



03.1 Which of the following research methods is being used in this study on bystander behaviour?

Shade ONE box. [1 mark]

A Case study

B Field experiment

C Interview

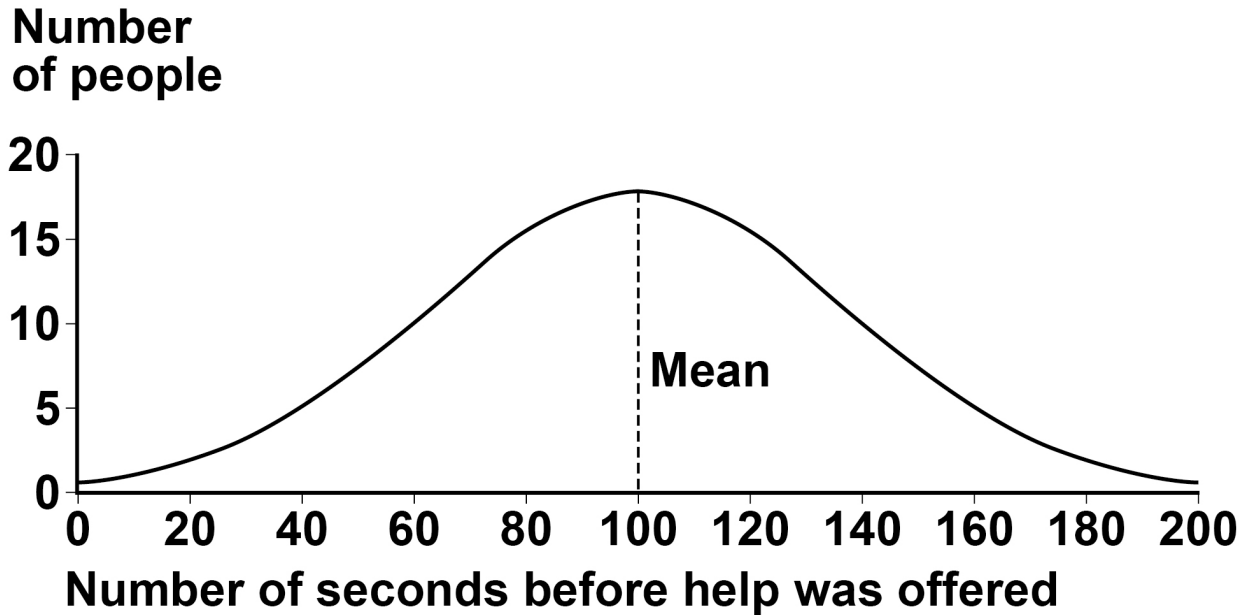
D Natural experiment

[Turn over]



The results for condition 1 are shown in FIGURE 1.

FIGURE 1



- 03.2** When data is plotted on a graph and makes the shape seen in FIGURE 1, what name is given to it? [1 mark]



03.3 Name TWO other descriptive statistics that would have a very similar value to the mean in FIGURE 1. [2 marks]

1

2

[Turn over]



[Turn over]



25



BLANK PAGE

[Turn over]



SECTION B**Language, thought and communication**

Answer ALL questions in the spaces provided.

0 5

A researcher wanted to understand the possible relationship between language and thought.

To help him understand this possible relationship, he carried out a study to see if there was any variation in the recognition of colours between people who speak different languages.

The participants were either English speakers or non-English speakers. Only the non-English speakers' language includes words that mean 'light shade of green' and 'dark shade of green'.

The researcher showed each participant 10 cards in different shades of green. Each participant was asked if the card was a light or dark shade of green.

The researcher recorded how long it took each participant to give a correct answer. The results of the research are shown in TABLE 1 on the opposite page.



TABLE 1

Total time (in seconds) that 10 participants took to recognise all of the shades of green correctly

English speaking participants	Non-English speaking participants
500	300

0 5 . 1 Which is the correct ratio of time taken by non-English speaking participants to time taken by English speaking participants?

Shade ONE box. [1 mark]

A 1:5

B 2:5

C 3:5

D 4:5

[Turn over]



0 **5** . **2** Identify ONE conclusion about the participants' recognition of colours that the researcher could draw from his results.

Use the data in TABLE 1, on page 19, to explain your answer.

How can this conclusion be explained using the Sapir-Whorf hypothesis about thinking and language? [6 marks]

[Turn over]



0	6
---	---

Name TWO properties of human communication that are NOT present in animal communication AND give an example of each property. [4 marks]

[Turn over]



07

Read the following conversation.

AARON “Hi Rosie.” *He pauses.* “How are you... um... feeling today?”

ROSIE “Can’t you tell by looking at me?”

AARON *He pauses.* “Um..., well not really. I think, I think it’s because your...err.... sunglasses are hard for me to see through.”

07.1

In the conversation, eye contact has been affected by Rosie wearing sunglasses.

What is meant by eye contact? [1 mark]

07.2 Identify TWO functions of eye contact that could have been affected by Rosie wearing sunglasses.

Use the conversation between Aaron and Rosie to explain AT LEAST ONE of the functions of eye contact that you have identified. [4 marks]

[Turn over]





0 8

A friend of yours is going to have an interview for a summer holiday job and asks for your advice about body language.

Using your knowledge of psychology, suggest an appropriate posture for your friend to use during the interview. Justify your answer. [3 marks]

[Turn over]



09

Describe AND evaluate Darwin's evolutionary theory of non-verbal communication. [6 marks]

[Turn over]

<hr/>
25



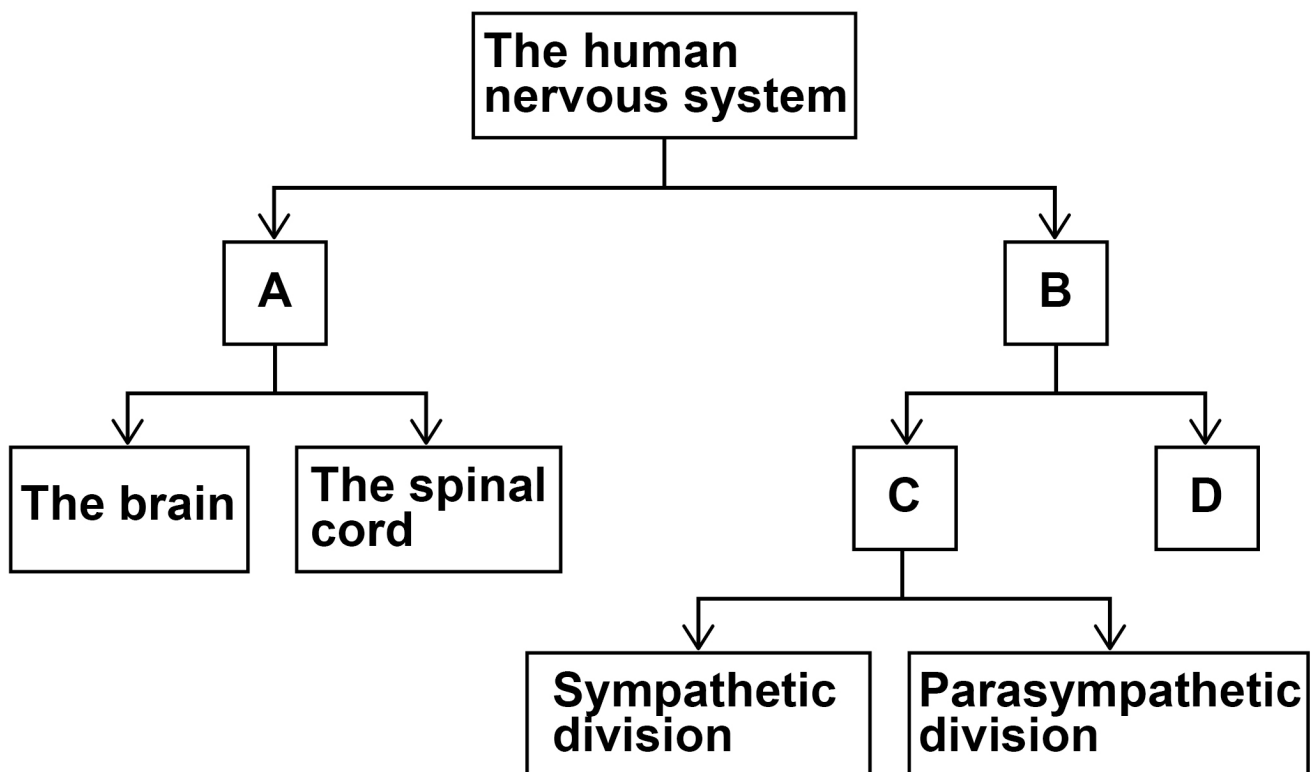
SECTION C

Brain and neuropsychology

Answer ALL questions in the spaces provided.

1 0 Look at the diagram of the divisions of the human nervous system in FIGURE 2 and answer the question that follows.

FIGURE 2



In **FIGURE 2**, four divisions of the human nervous system are labelled with the letters **A, B, C and D**.

Identify each of the divisions by placing the correct letter in the appropriate box in **TABLE 2**.

Use each letter only once. [3 marks]

TABLE 2

Name of the division of the human nervous system	Letter given in FIGURE 2
The autonomic nervous system	
The central nervous system	
The peripheral nervous system	
The somatic nervous system	

[Turn over]



1	1
---	---

**Evaluate the James-Lange theory of emotion.
[4 marks]**

[Turn over]



1 2

Neurons are nerve cells that carry messages.

Explain the specific function of a sensory neuron.

Give ONE example of a situation that would cause the sensory neuron to send a message.
[3 marks]

Explanation _____

Example

[Turn over]



1 | 3

Read the following information.

Vijay passed his driving test 6 months ago. When he first started having lessons, he had to concentrate really hard to steer the car and change gear. Now he can do these things almost without thinking.

Use your knowledge of Hebb's theory of learning and neuronal growth to explain Vijay's behaviour. [3 marks]



1 4

Describe Penfield's case study of the interpretive cortex.

Evaluate the research method used in this study. [9 marks]

[Turn over]



[Turn over]



1	5
---	---

Describe how a PET scan is used to look at brain functioning. [3 marks]

25



BLANK PAGE

[Turn over]



SECTION D**Psychological problems**

Answer ALL questions in the spaces provided.

1	6
----------	----------

Read the following article.

Effects of significant mental health problems

A report looking at the effects of significant mental health problems has been published today.

The report suggests that one of the most worrying effects is the negative impact on the physical well-being of people with mental health problems. Not only can this increase the number of visits made to doctors and other healthcare professionals, it can also decrease productivity due to people missing work.

The report also looks at other effects, such as the higher costs of policing due to increases in crime rates and the damage caused to relationships.



The article gives a number of examples of the effects of significant mental health problems.

Identify TWO examples of effects on individuals and TWO examples of effects on society that the article refers to.

Write your answers in the correct boxes.
[4 marks]

Effects on individuals	Effects on society

[Turn over]



1	7
---	---

The number of people with significant mental health problems has changed over time.

Use your knowledge of psychology to suggest TWO reasons for this change. [2 marks]

1

2



BLANK PAGE

[Turn over]



18

Researchers used an online questionnaire to investigate a possible link between the amount of time spent on social media and depression. Only people who regularly spend at least nine hours a day on social media were asked to complete the questionnaire. Fifty questionnaires were completed and returned. One of the questions asked participants if they thought that their sleep patterns were affected by spending time on social media. TABLE 3 shows the results.

TABLE 3

Responses of participants to the question: 'Do you think your sleep patterns are affected by the amount of time you spend on social media sites?'

Response 1 – YES	Response 2 – NO
28	22



- 18.1** Calculate the percentage of participants who said their sleep patterns were affected.

Show your workings. [2 marks]

Workings

= _____ %

[Turn over]



1 8 . 2 'Changes in sleep patterns' is listed in the International Classification of Diseases (ICD) as a symptom of unipolar depression.

Identify TWO OTHER symptoms of unipolar depression listed in the ICD. [2 marks]

1 _____

2 _____

1 8 . 3 The researchers used opportunity sampling to select the participants who answered the questionnaire.

Explain ONE weakness of using opportunity sampling in psychological research. [2 marks]

[Turn over]

19

Briefly evaluate the use of antidepressant medications as an intervention for depression. [3 marks]



20

One characteristic of addiction is dependence.

What is meant by dependence? [2 marks]

[Turn over]



2	1
---	---

Read the following conversation.

Two people were having a conversation about why they started smoking cigarettes when they were teenagers.

DAVID 'I started smoking because most of my family did.'

GEORGIE 'I started smoking because my best friends did and so did some of my favourite celebrities.'

Use your knowledge of theories of addiction to suggest why **BOTH** David and Georgie started smoking. Use the conversation to explain your answer. [5 marks]



2 **2**

Identify ONE intervention OR therapy for addiction that could be viewed as holistic.

Explain your answer. [3 marks]

END OF QUESTIONS

25



Additional page, if required.

Write the question numbers in the left-hand margin.

Additional page, if required.

Write the question numbers in the left-hand margin.



BLANK PAGE

For Examiner's Use	
Section	Mark
A	
B	
C	
D	
TOTAL	

Copyright information

For confidentiality purposes, all acknowledgements of third-party copyright material are published in a separate booklet. This booklet is published after each live examination series and is available for free download from www.aqa.org.uk.

Permission to reproduce all copyright material has been applied for. In some cases, efforts to contact copyright-holders may have been unsuccessful and AQA will be happy to rectify any omissions of acknowledgements. If you have any queries please contact the Copyright Team.

Copyright © 2020 AQA and its licensors. All rights reserved.

IB/M/CH/Jun20/8182/2/E2