

A



Surname \_\_\_\_\_

Other Names \_\_\_\_\_

Centre Number \_\_\_\_\_

Candidate Number \_\_\_\_\_

Candidate Signature \_\_\_\_\_

I declare this is my own work.

**GCSE  
BIOLOGY**

**F**

Foundation Tier Paper 2F

**8461/2F**

Time allowed: 1 hour 45 minutes

At the top of the page, write your surname and other names, your centre number, your candidate number and add your signature.

[Turn over]



J U N 2 1 8 4 6 1 2 F 0 1

**For this paper you must have:**

- a ruler
- a scientific calculator.

## **INSTRUCTIONS**

- Use black ink or black ball-point pen.
- Pencil should only be used for drawing.
- Answer ALL questions in the spaces provided.
- If you need extra space for your answer(s), use the lined pages at the end of this book. Write the question number against your answer(s).
- Do all rough work in this book. Cross through any work you do not want to be marked.
- In all calculations, show clearly how you work out your answer.



## **INFORMATION**

- **The maximum mark for this paper is 100.**
- **The marks for questions are shown in brackets.**
- **You are expected to use a calculator where appropriate.**
- **You are reminded of the need for good English and clear presentation in your answers.**

**DO NOT TURN OVER UNTIL TOLD TO DO SO**



**BLANK PAGE**



**Answer ALL questions in the spaces provided.**

**0 1**

**The theory of evolution states that organisms alive today evolved by natural selection from other species that are now extinct.**

**0 1 . 1**

**Which TWO scientists proposed the theory of evolution by natural selection? [2 marks]**

**Tick (✓) TWO boxes.**

**Alexander Fleming**

**Alfred Russel Wallace**

**Carl Linnaeus**

**Carl Woese**

**Charles Darwin**

**[Turn over]**



Fossils provide evidence for evolution.

FIGURE 1 shows a fossil footprint of a dinosaur.

FIGURE 1



0 1 . 2

What is a fossil? [2 marks]

---

---

---

---

---

0	1	.	3
---	---	---	---

**How was the fossil in FIGURE 1 formed? [1 mark]**

**Tick (✓) ONE box.**

**Body parts were replaced by minerals.**

**The animal walked on mud.**

**The animal was frozen in ice.**

**[Turn over]**



0 1 . 4

**Dinosaurs are extinct.**

**Give TWO causes of extinction. [2 marks]**

1 \_\_\_\_\_  
\_\_\_\_\_  
\_\_\_\_\_

2 \_\_\_\_\_  
\_\_\_\_\_  
\_\_\_\_\_



0 1 . 5

Which TWO of the following provide evidence for evolution? [2 marks]

Tick (✓) TWO boxes.

Bacteria can become resistant to an antibiotic.

Early forms of life lived in the ocean.

Older fossils are simpler than more recent ones.

Older layers of rock are closer to the surface.

[Turn over]

9



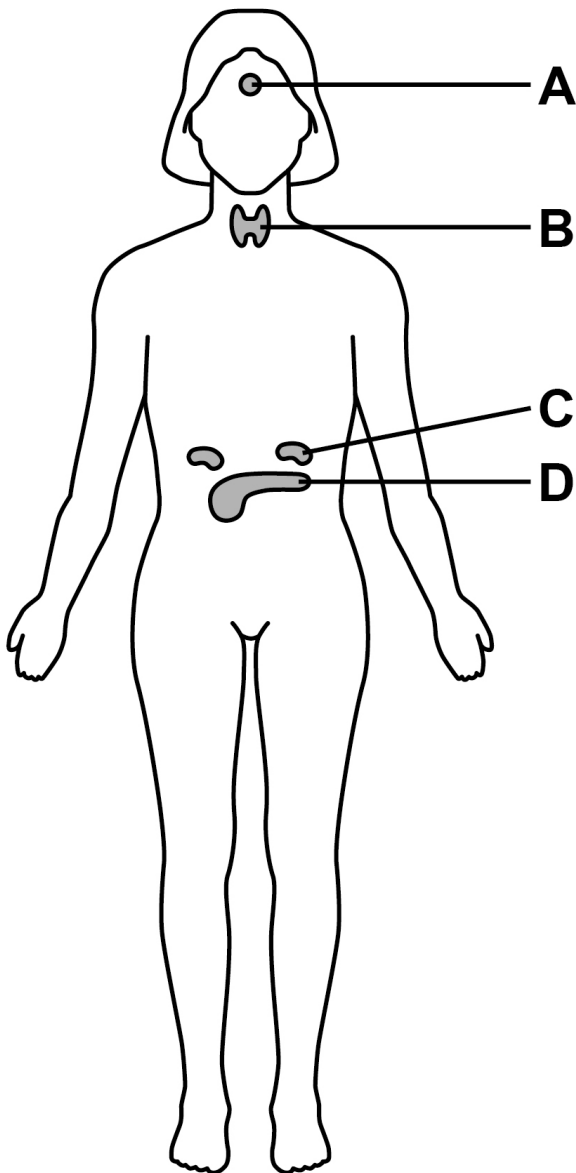
0 2

Many internal processes of the human body are controlled by hormones.

Hormones are produced by glands.

FIGURE 2 shows glands in a woman's body.

FIGURE 2



0 2 . 1

Which gland is the pituitary gland? [1 mark]

Tick (✓) ONE box.

A

B

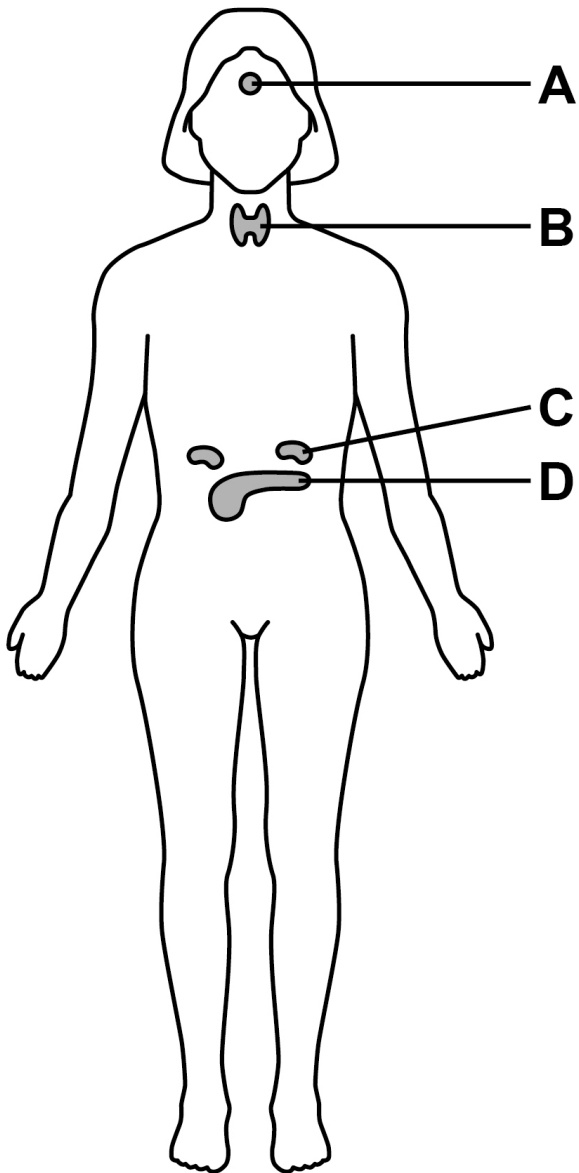
C

D

[Turn over]



REPEAT OF FIGURE 2



0 2 . 2

Which gland is the pancreas? [1 mark]

Tick (✓) ONE box.

A

B

C

D

[Turn over]



The hormone insulin helps to decrease the blood glucose concentration.

Insulin causes its target organs to take in glucose from the blood.

0 2 . 3

Which of the following is a target organ for insulin?  
[1 mark]

Tick (✓) ONE box.

Bladder

Heart

Liver



0	2	.	4
---	---	---	---

The glucose is stored as an insoluble substance.

What is the insoluble storage substance that is formed from glucose? [1 mark]

Tick (✓) ONE box.

Glycogen

Protein

Urea

[Turn over]



**Scientists investigated the effect of a glucose drink on the concentration of glucose in a person's blood.**

**This is the method used.**

- 1. Take a small sample of blood from the person.**
- 2. Measure the concentration of glucose in the person's blood.**
- 3. Give the person a drink containing 50 grams of glucose.**
- 4. Measure the concentration of glucose in the person's blood at intervals.**
- 5. Calculate the CHANGE in blood glucose concentration from the starting value.**

**FIGURE 3, on page 18, shows the results.**





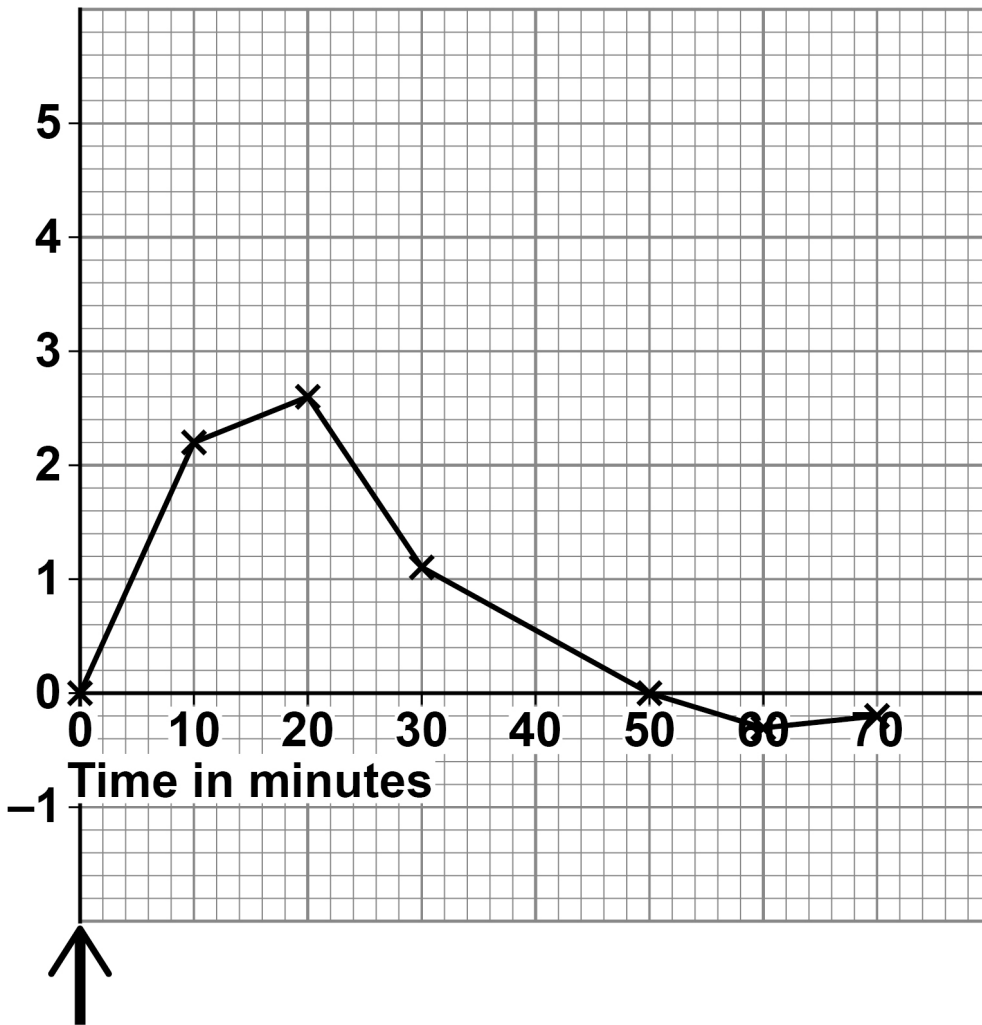
**BLANK PAGE**

**[Turn over]**



FIGURE 3

Change in  
blood glucose  
concentration  
in  $\text{mmol/dm}^3$



↑  
Time when glucose  
solution was drunk

FIGURE 3 shows the **CHANGE** in blood glucose concentration.



0	2	.	5
---	---	---	---

At the start of the investigation, the blood glucose concentration was  $5 \text{ mmol/dm}^3$ .

Calculate the highest blood glucose concentration during the investigation.

Use information from FIGURE 3 in your answer.  
[2 marks]

---

---

---

---

Highest blood glucose concentration =

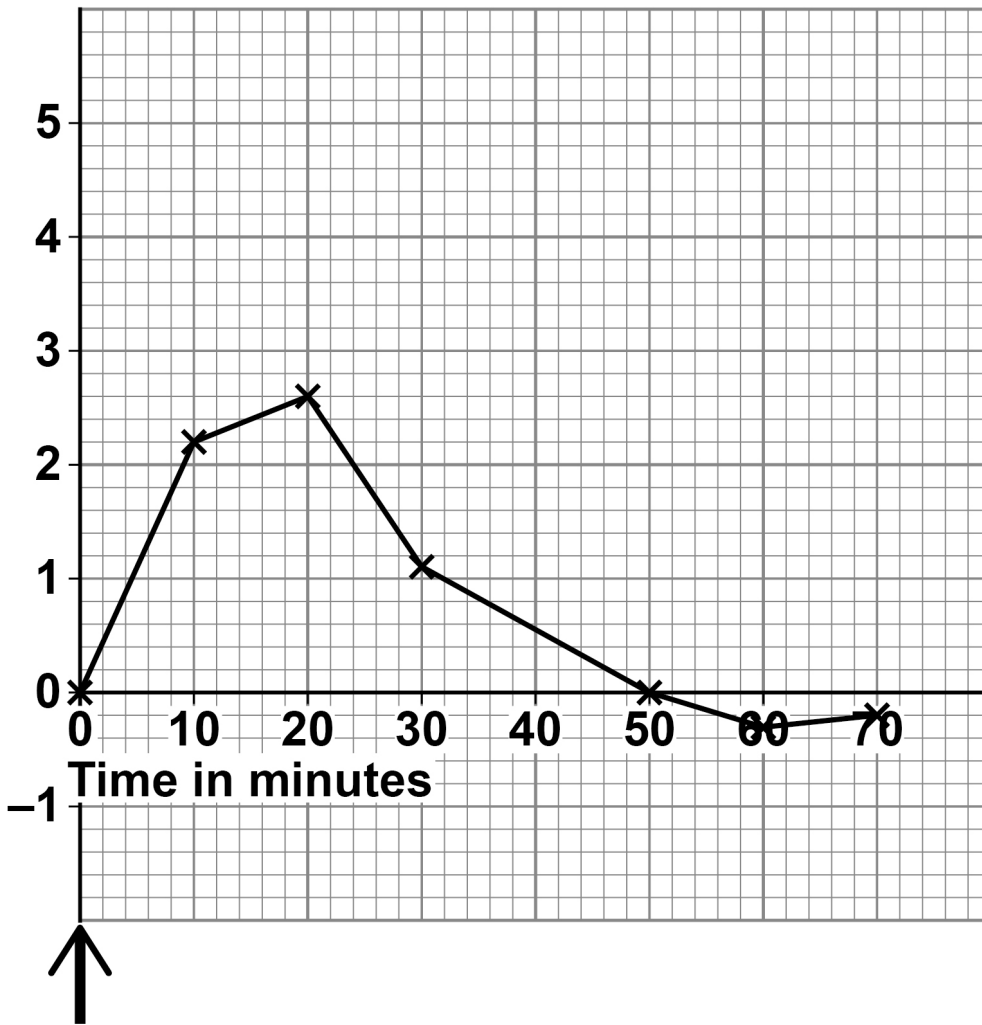
\_\_\_\_\_  $\text{mmol/dm}^3$

[Turn over]



## REPEAT OF FIGURE 3

Change in  
blood glucose  
concentration  
in  $\text{mmol/dm}^3$



Time when glucose  
solution was drunk



02.6

What is the time taken for the blood glucose concentration to decrease from its highest value back to the starting value?

Use data from FIGURE 3 in your answer. [1 mark]

---



---

Time taken = \_\_\_\_\_ minutes

02.7

Why can you NOT be certain that your answer to Question 02.6 is accurate? [1 mark]

---



---



---

02.8

FIGURE 3 shows the results for a person who does NOT HAVE Type 2 diabetes.

Sketch a line on FIGURE 3, on the opposite page, to show the results you would expect for a person who HAS Type 2 diabetes. [2 marks]



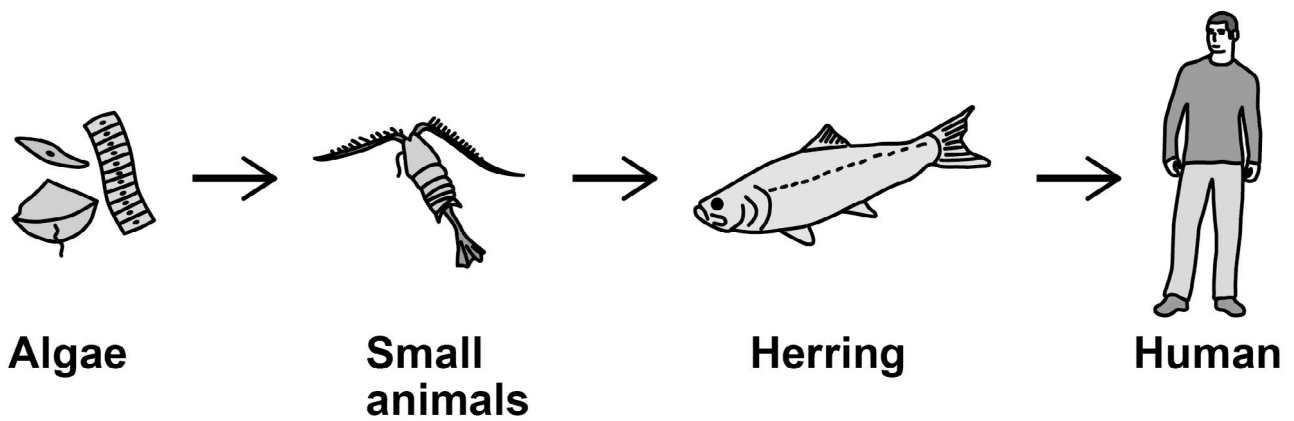
03

People eat fish caught in the North Sea.

FIGURE 4 shows a food chain.

The diagram is NOT drawn to scale.

FIGURE 4



**03.1**

The algae make glucose by photosynthesis.

Which TWO substances do the algae need for photosynthesis? [2 marks]

Tick (✓) TWO boxes.

**Carbon dioxide**

**Nitrogen**

**Oxygen**

**Starch**

**Water**

**[Turn over]**



03.2

**What is the source of energy for photosynthesis?  
[1 mark]**

**Tick (✓) ONE box.**

**Light**

**Mineral ions**

**Protein**

**Water**

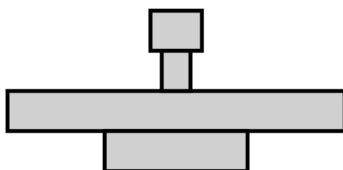
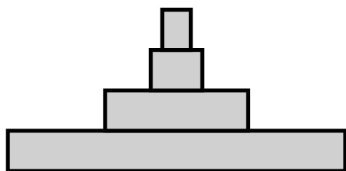
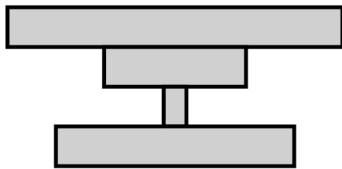
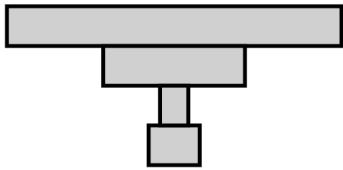




03.3

Which pyramid of biomass is correct for the food chain shown in FIGURE 4? [1 mark]

Tick (✓) ONE box.



[Turn over]



**FIGURE 5** shows the biomass of adult herring in the North Sea between 1950 and 1990.

**FIGURE 5**

**Biomass of  
adult herring  
in millions of  
tonnes**



0	3	.	4
---	---	---	---

Too many herring were caught in the 1960s.

Calculate the percentage decrease in the biomass of adult herring between 1960 and 1970.

Use the equation:

percentage decrease =

$$\frac{(\text{biomass in 1960} - \text{biomass in 1970})}{\text{biomass in 1960}} \times 100$$

Give your answer to the nearest whole number.  
[4 marks]

---

---

---

---

---

---

---

---

---

---

Percentage decrease = \_\_\_\_\_ %

[Turn over]



## REPEAT OF FIGURE 5

Biomass of  
adult herring  
in millions of  
tonnes



From 1977, laws were introduced to help conserve herring.

0 3 . 5

Describe the change in biomass of adult herring from 1977 to 1990.

Use data from FIGURE 5 in your answer. [2 marks]

---

---

---

---

---

---

---

---

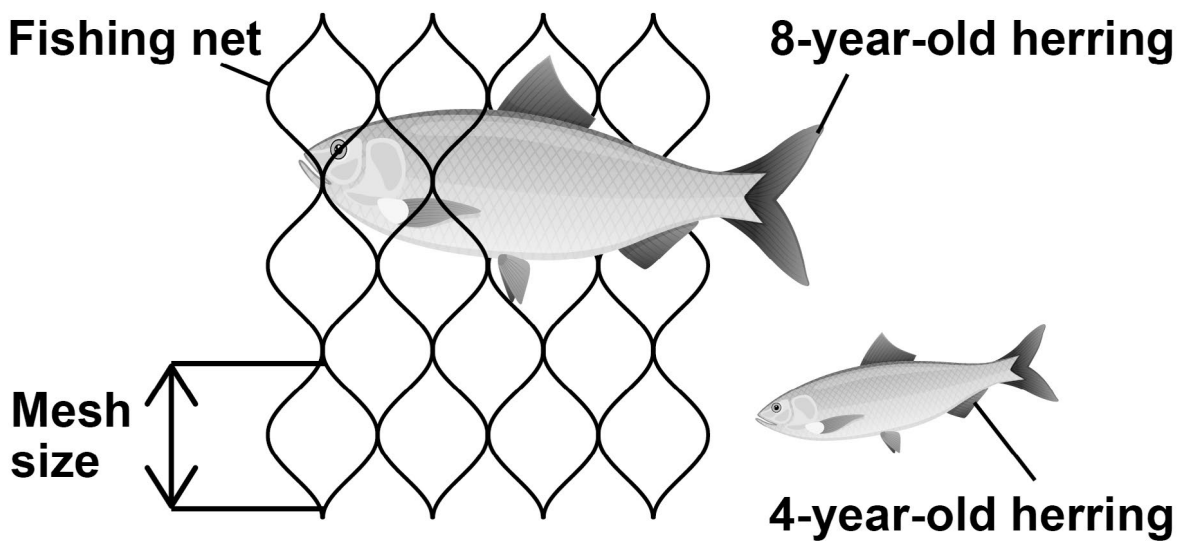
[Turn over]

03.6

One of the laws was to control mesh size of fishing nets.

FIGURE 6 shows a fishing net with a legal mesh size.

FIGURE 6



**Herring can live for up to 12 years.**

**Herring start to reproduce when they are 3 to 4 years old.**

**Explain how the control of mesh size of fishing nets has helped to conserve stocks of herring. [2 marks]**

---

---

---

---

---

---

---

---

**[Turn over]**

12

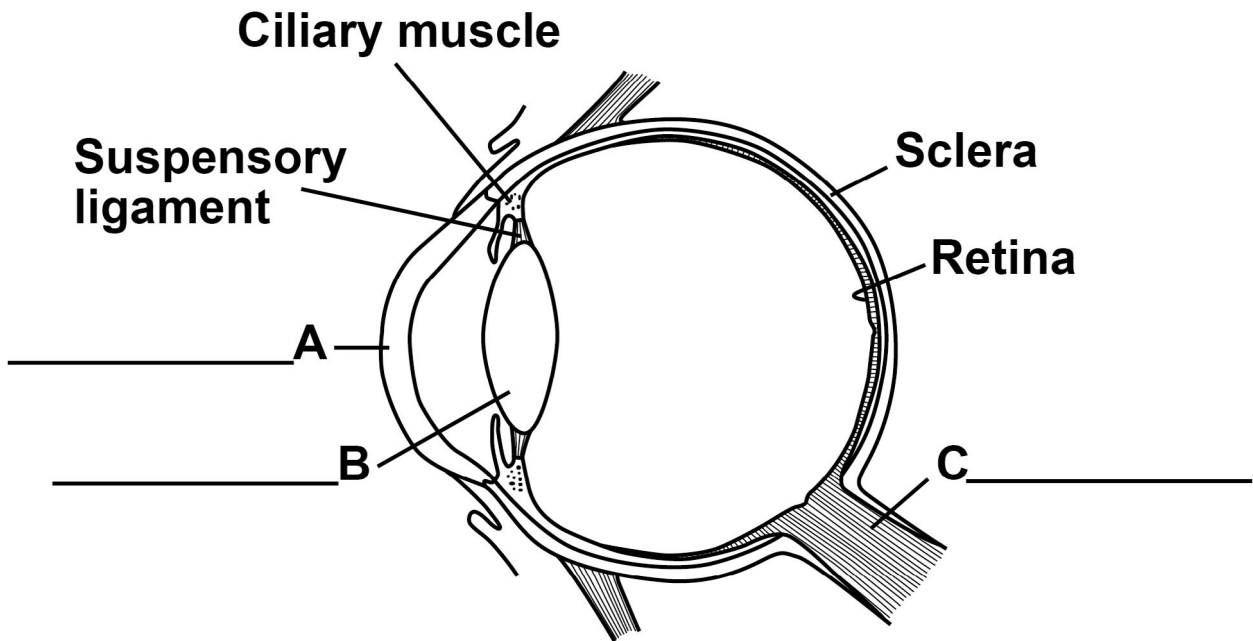


04

The human eye can form images of objects that are at different distances away from the eye.

FIGURE 7 is a diagram of the eye.

FIGURE 7





0	4	.	1
---	---	---	---

**Label structures A, B and C on FIGURE 7. [3 marks]**

**Choose answers from the list.**

- cornea
- eyelid
- iris
- lens
- optic nerve

**[Turn over]**



The eye in FIGURE 7, on page 32, is focused on a distant object.

If the eye then focuses on the words in a book, changes would occur in the eye.

The light rays would be refracted more by the lens.

04.2

How does the lens refract the light more? [1 mark]

Tick (✓) ONE box.

By becoming longer

By becoming thicker

By becoming transparent



04.3

Which TWO structures control the shape of the lens?  
[2 marks]

Tick (✓) TWO boxes.

Ciliary muscles

Cornea

Iris

Sclera

Suspensory ligaments

04.4

To form a clear image, the light rays entering the eye must focus on one structure in the eye.

Name the structure. [1 mark]

---

[Turn over]



0	4	.	5
---	---	---	---

**An insect flies near a person's eye. The person blinks. This is a reflex action.**

**FIGURE 8, on the opposite page, shows the coordination system for this reflex action.**

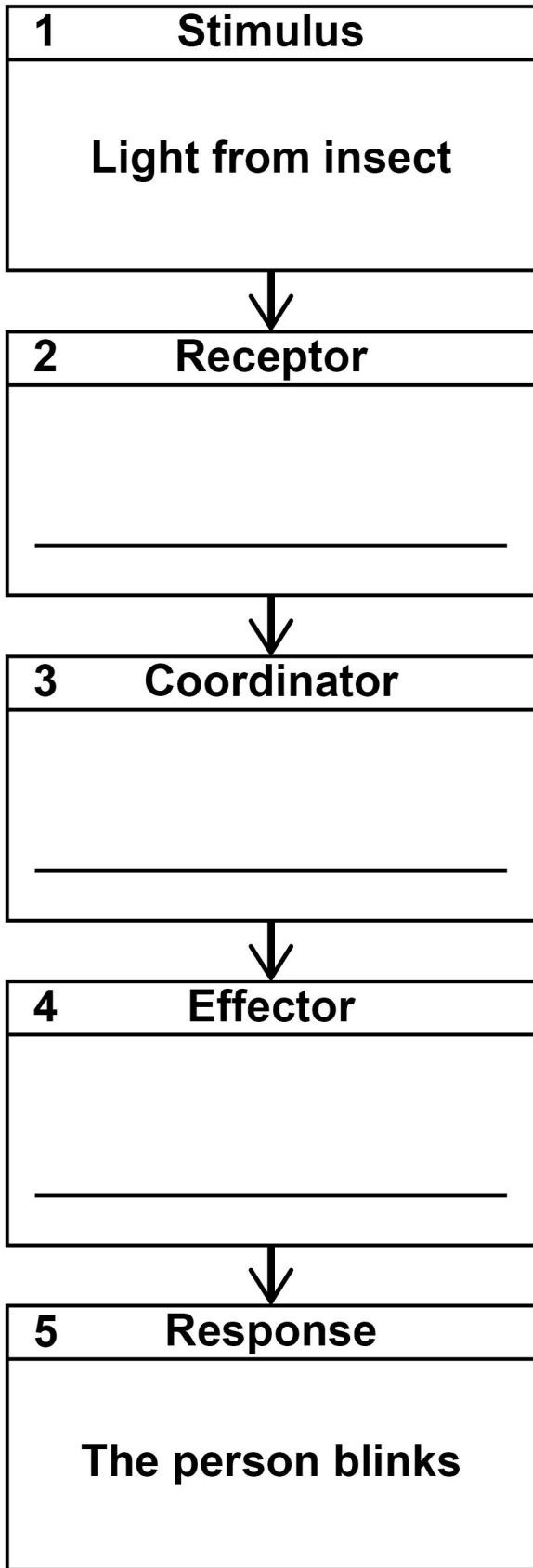
**Complete FIGURE 8, on the opposite page. [2 marks]**

**Choose answers from the list below.**

**Write ONE word in each of boxes 2, 3 and 4 of FIGURE 8.**

- brain
- cornea
- iris
- muscles
- retina

FIGURE 8



[Turn over]



0	5
---	---

Potato blight is a disease of potato plants.

Potato blight is caused by the fungus 'Phytophthora infestans'.

0	5	.	1
---	---	---	---

What is the genus of the fungus that causes potato blight? [1 mark]

Tick (✓) ONE box.

'infestans'

'Phytophthora'

'Phytophthora infestans'



0	5	.	2
---	---	---	---

The fungus grows near the surface of the potato.

How does growing near the surface help the fungus to respire? [1 mark]

Tick (✓) ONE box.

The fungus can get nitrogen from the soil.

The fungus can get oxygen from the air.

The fungus can get water from the potato.

[Turn over]



**A farmer sprays his potato plants with a pesticide.**

**The pesticide kills the fungus that causes potato blight.**

**Spraying the crop with a pesticide could decrease biodiversity in a river flowing through his farm.**

**0 5 . 3**

**What does 'biodiversity in a river' mean? [1 mark]**

**Tick (✓) ONE box.**

**The variety of species of animals in the river.**

**The variety of species of organisms in the river.**

**The variety of species of plants in the river.**



0 5 . 4

The farmer sprayed pesticide on his potato plants. The next day it rained heavily.

Explain why the biodiversity in the river decreased.  
[2 marks]

---

---

---

---

---

---

---

---

[Turn over]

Another method of preventing potato blight is to breed potatoes that are resistant to blight.

Resistance to potato blight is controlled by two alleles:

**R** = a dominant allele for having resistance to blight.

**r** = a recessive allele for NOT having resistance to blight.

A scientist crosses two potato plants. Each plant has the genotype **Rr**.

0 5 . 5

Complete FIGURE 9 to show the possible genotypes of the offspring produced. [2 marks]

FIGURE 9

Male gametes

		<b>R</b>	<b>r</b>
Female gametes	<b>R</b>	<b>RR</b>	
	<b>r</b>		



**0 5 . 6**

**Draw a ring around ONE of the homozygous genotypes in FIGURE 9. [1 mark]**

**0 5 . 7**

**What percentage of the offspring in FIGURE 9 will be resistant to potato blight? [1 mark]**

**Tick (✓) ONE box.**

**25%****50%****75%****100%**

**[Turn over]**



0	5	.	8
---	---	---	---

Potatoes can also reproduce asexually.

Potatoes from one plant can be planted in the ground to produce new potato plants.

**ALL** the new plants from a parent plant that is resistant to blight will also be resistant to blight.

Explain why. [2 marks]

---

---

---

---

---

---

---

---

11



**BLANK PAGE**

**[Turn over]**



0	6
---	---

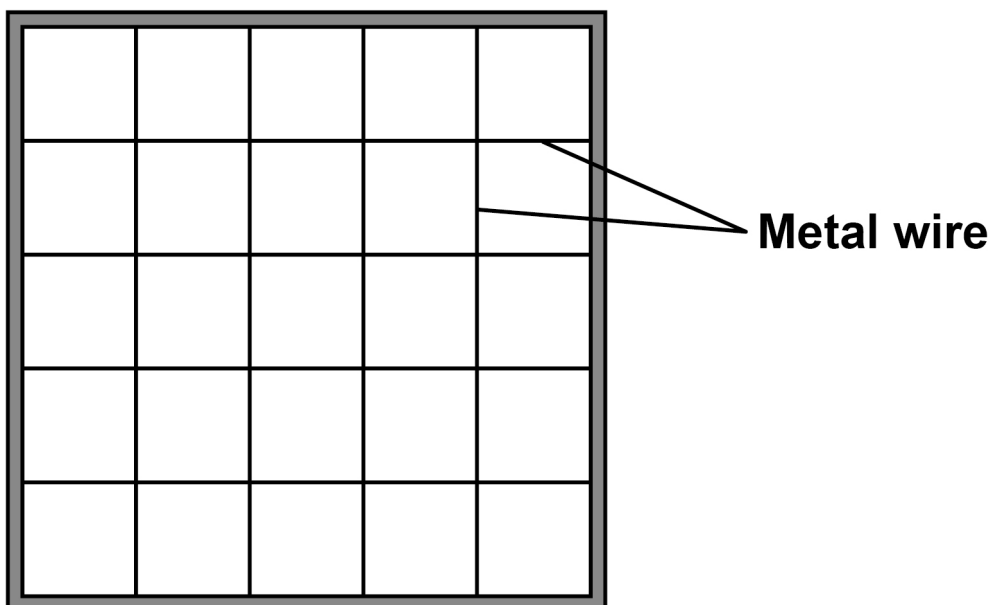
A student estimated the percentage cover of buttercup plants in a field.

The student used a quadrat.

The quadrat was divided into 25 equal squares.

FIGURE 10 shows the quadrat.

FIGURE 10



This is the method used.

1. Place the quadrat on the ground.
2. Record how many squares in the quadrat contain buttercup plants.
3. Place the quadrat in a new position in the field.



4. Record how many squares in the quadrat contain buttercup plants.
5. Repeat steps 3 and 4 another three times.

06.1

What method should the student have used for placing the quadrat? [1 mark]

Tick (✓) ONE box.

Place the quadrat where there are many buttercup plants.

Place the quadrat only where there are no trees.

Place the quadrat using random coordinates.

Use the same person to place all the quadrats.

[Turn over]



The student calculated the percentage cover of buttercup plants for each quadrat.

TABLE 1 shows the student's results.

TABLE 1

Quadrat number	Number of squares containing buttercup plants	Percentage cover of buttercup plants
1	10	40
2	13	52
3	22	88
4	20	80
5	10	40
Mean		X





0	6	.	2
---	---	---	---

Calculate mean value X in TABLE 1. [2 marks]

---

---

---

---

X = \_\_\_\_\_ %

[Turn over]

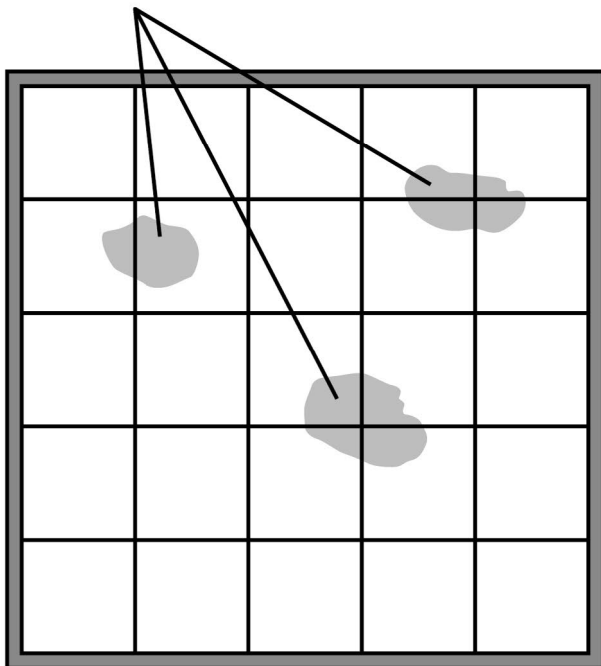


**TABLE 1** shows that quadrat 1 and quadrat 5 each had 40% cover of buttercup plants.

**FIGURE 11** shows the results for quadrat 1 and quadrat 5.

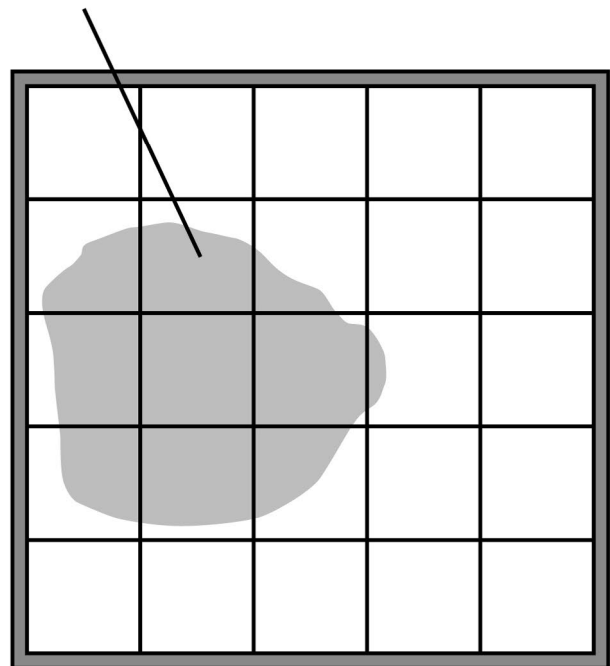
**FIGURE 11**

**Groups of buttercup plants**



**QUADRAT 1**

**Group of buttercup plants**



**QUADRAT 5**

**0 6 . 3**

The student's method of estimating the percentage cover of buttercup plants is **NOT** accurate.

How does **FIGURE 11** show this? [1 mark]

Tick (✓) **ONE** box.

**Quadrat 1 has more groups of buttercup plants.**

**The area of buttercup plants in quadrat 5 is much larger.**

**The buttercup plants are in ten squares in both quadrats.**

**[Turn over]**



**06.4**

The student wanted to get a more valid estimate of the percentage cover of buttercup plants in the field.

Suggest TWO improvements to the method to make the results more valid. [2 marks]

1

---

2

---

**06.5**

Give THREE environmental factors that would affect the growth of buttercup plants in a field. [3 marks]

1

---

2

---

3

---

9



**BLANK PAGE**

**[Turn over]**



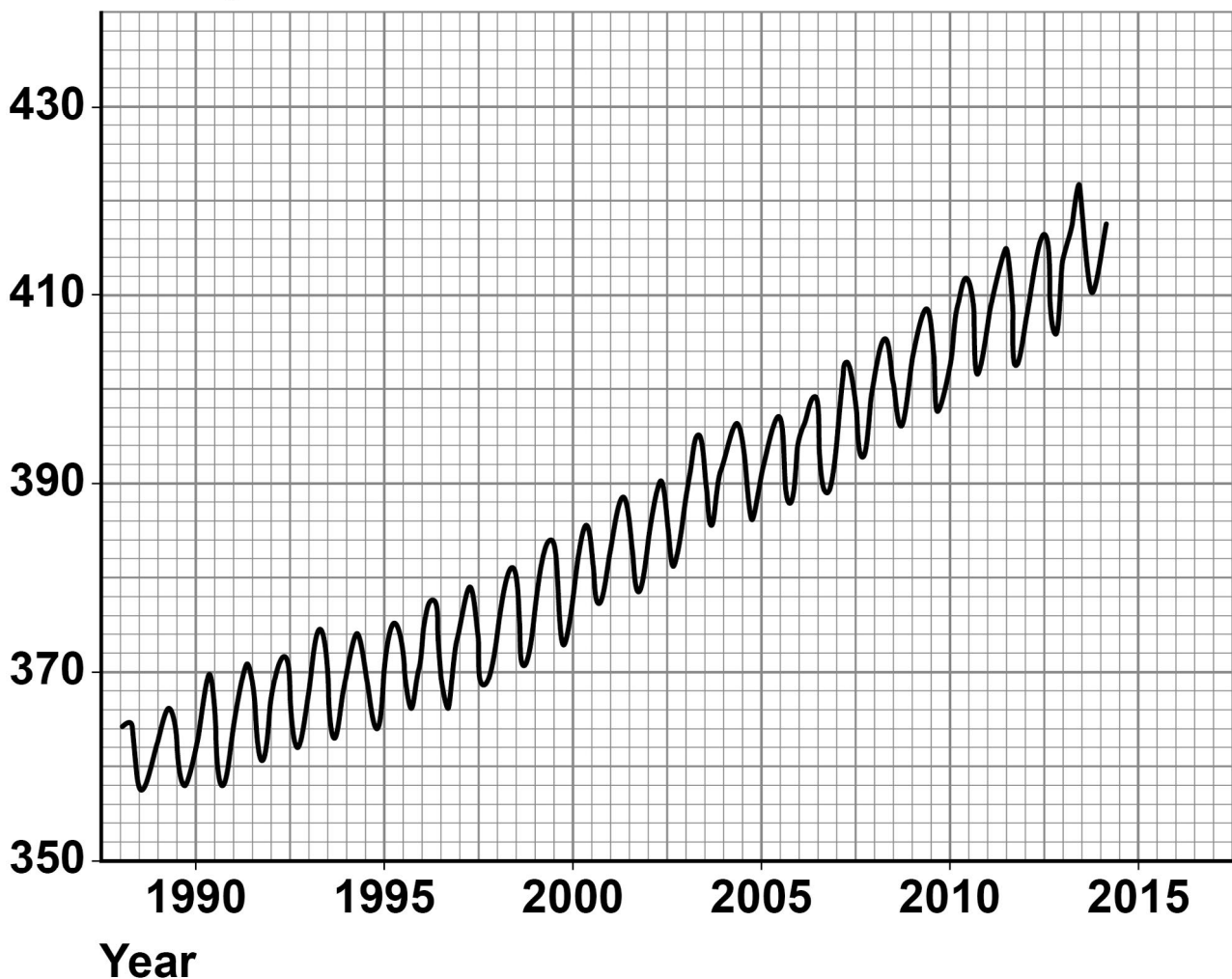
07

Scientists are very concerned about the changes in concentration of carbon dioxide in the Earth's atmosphere.

FIGURE 12 shows the concentration of carbon dioxide in the atmosphere between 1988 and 2014.

### FIGURE 12

Concentration of carbon dioxide in the atmosphere in arbitrary units



07.1

Describe TWO patterns shown in FIGURE 12.

Use data from FIGURE 12 in your answer. [4 marks]

1 \_\_\_\_\_

---

---

---

---

---

---

---

---

2 \_\_\_\_\_

---

---

---

---

---

---

---

---

[Turn over]



07.2

**Give TWO human activities that affect the concentration of carbon dioxide in the atmosphere. [2 marks]**

1

---

---

---

2

---

---

---

07.3

**The trend shown in FIGURE 12, on page 54, may continue for many years.**

**Explain what effect the changing concentration of carbon dioxide in the atmosphere could have on living organisms. [4 marks]**

---

---

---





---

---

---

---

---

---

---

---

---

---

---

---

---

---

---

---

---

---

---

---

---

---

---

---

---

---

---

**[Turn over]**



---

---

---

---

---

---

---

---

10



0	8
---	---

The nucleus of a cell contains DNA.

0	8	.	1
---	---	---	---

Name the structures inside the cell nucleus that contain DNA. [1 mark]

---

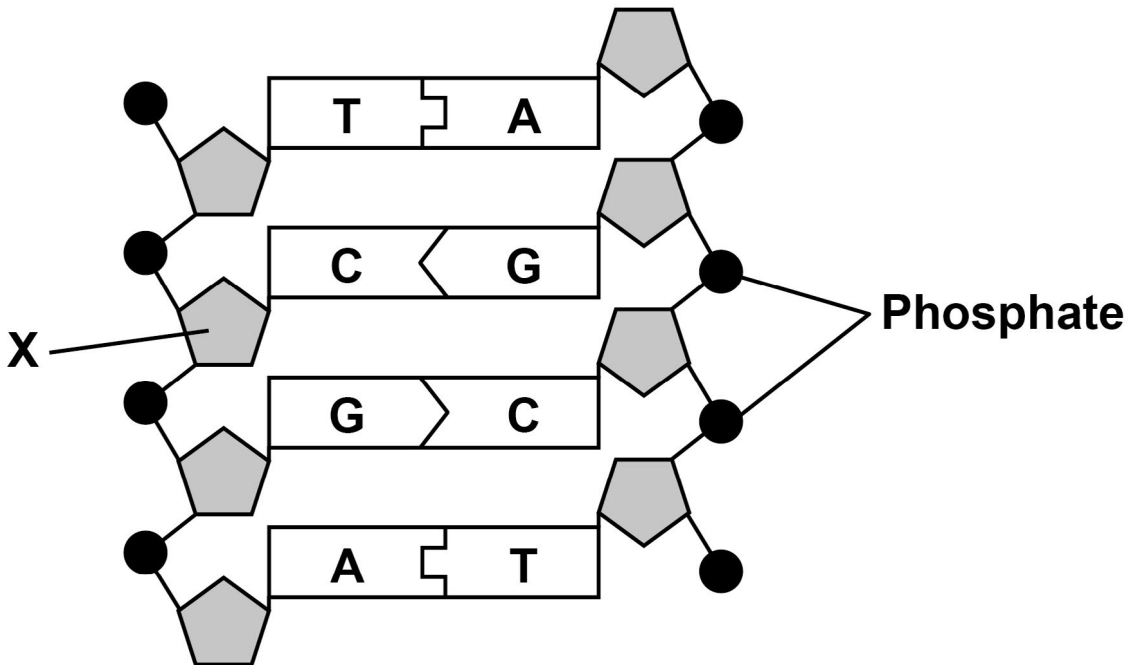
---

[Turn over]



FIGURE 13 shows part of a DNA molecule.

FIGURE 13



08.2

Name the part of the DNA molecule labelled X. [1 mark]

---

08.3

What type of substances are labelled A, C, G and T in FIGURE 13? [1 mark]

---



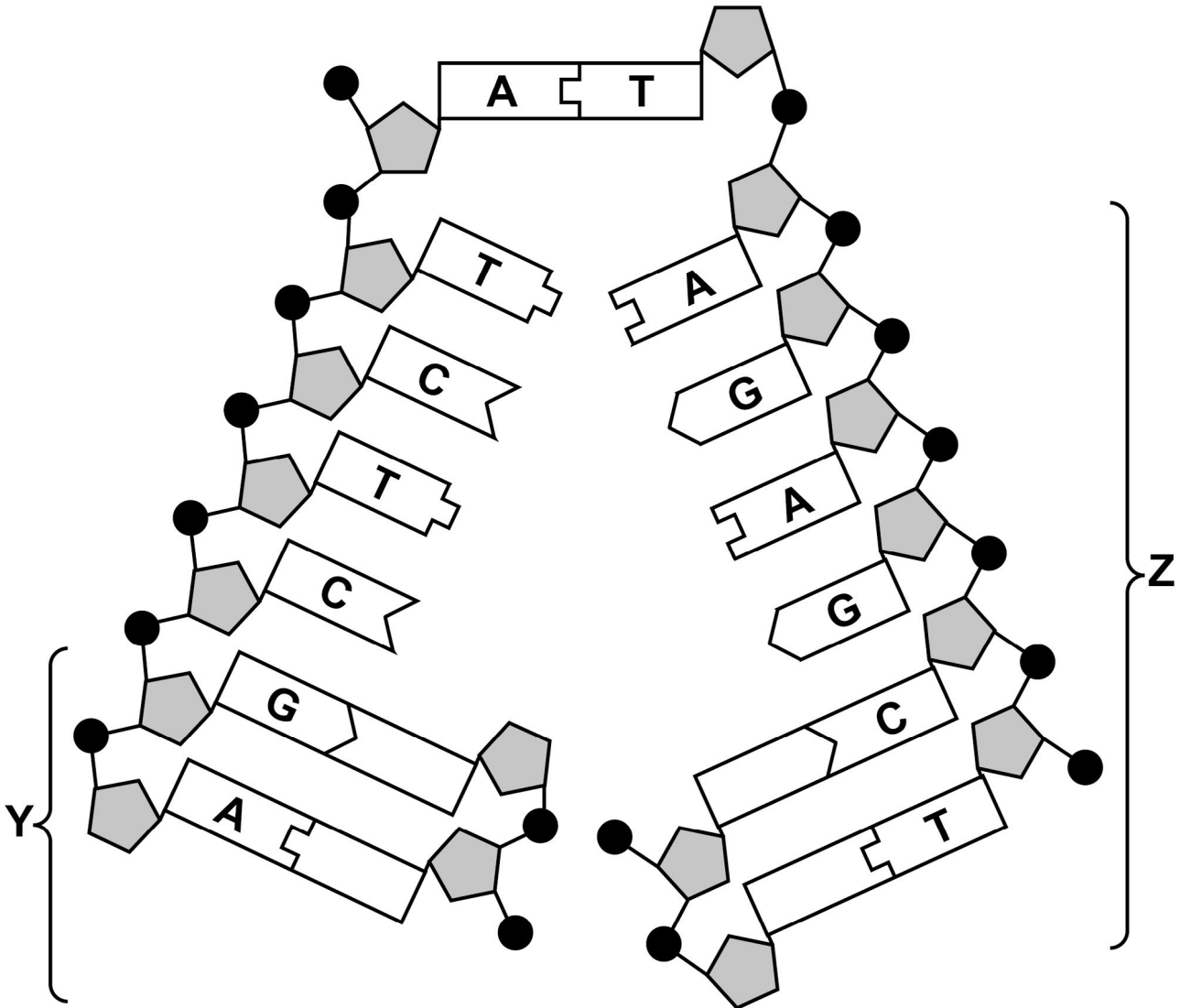
**BLANK PAGE**

**[Turn over]**



FIGURE 14 shows another section of a DNA molecule.

FIGURE 14



08.4

Four of the substances you named in Question 08.3 are NOT labelled in part Y of FIGURE 14.

Label each of these substances with the correct letter, A, C, G or T.

Use information from other parts of FIGURE 14 to help you. [1 mark]



08.5

What is happening to the DNA in part Z of FIGURE 14?  
[1 mark]

Tick (✓) ONE box.

Differentiation

Evolution

Fertilisation

Replication

08.6

A gene is a length of DNA.

What type of substance does a gene code for? [1 mark]

---

---

[Turn over]



0	8	.	7
---	---	---	---

Most human body cells contain  $6 \times 10^{-12}$  grams of DNA.

What mass of DNA will a human sperm cell contain?  
[1 mark]

Tick (✓) ONE box.

$6 \times 10^{-6}$  grams

$6 \times 10^{-12}$  grams

$3 \times 10^{-6}$  grams

$3 \times 10^{-12}$  grams





0	8	.	8
---	---	---	---

**What is the name of the type of cell division that produces sperm cells? [1 mark]**

**Tick (✓) ONE box.**

**Binary fission**

**Differentiation**

**Meiosis**

**Mitosis**

**[Turn over]**

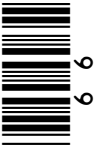
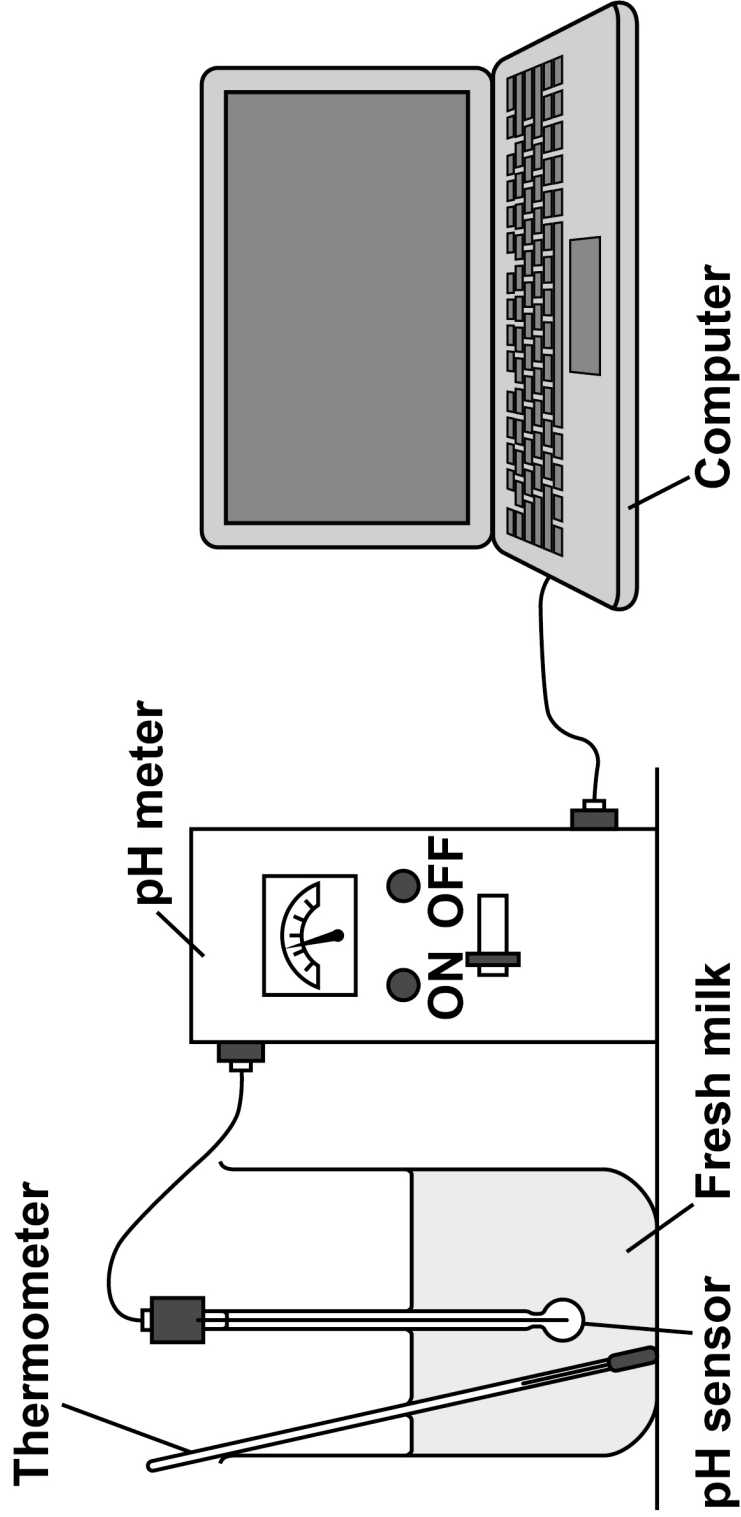
8



A student investigated the effect of temperature on the decay of milk.

FIGURE 15 shows the apparatus the student used.

FIGURE 15



This is the method used.

1. Set up the apparatus as shown in FIGURE 15 with the milk at 20 °C.
2. Record the pH over 5 days using the computer.
3. Repeat with another batch of fresh milk at 25 °C.

09.1

How could the student keep the milk at a constant temperature for 5 days?  
[1 mark]

---

---

09.2

Give ONE variable the student should keep constant.  
Do NOT refer to temperature in your answer. [1 mark]

---

---



[Turn over]

**TABLE 2** shows the student's results for the milk at 20 °C.

**TABLE 2**

Time in days	0	1	2	3	4	5
pH	6.7	6.7	6.3	5.3	4.6	4.4

0 9 . 3

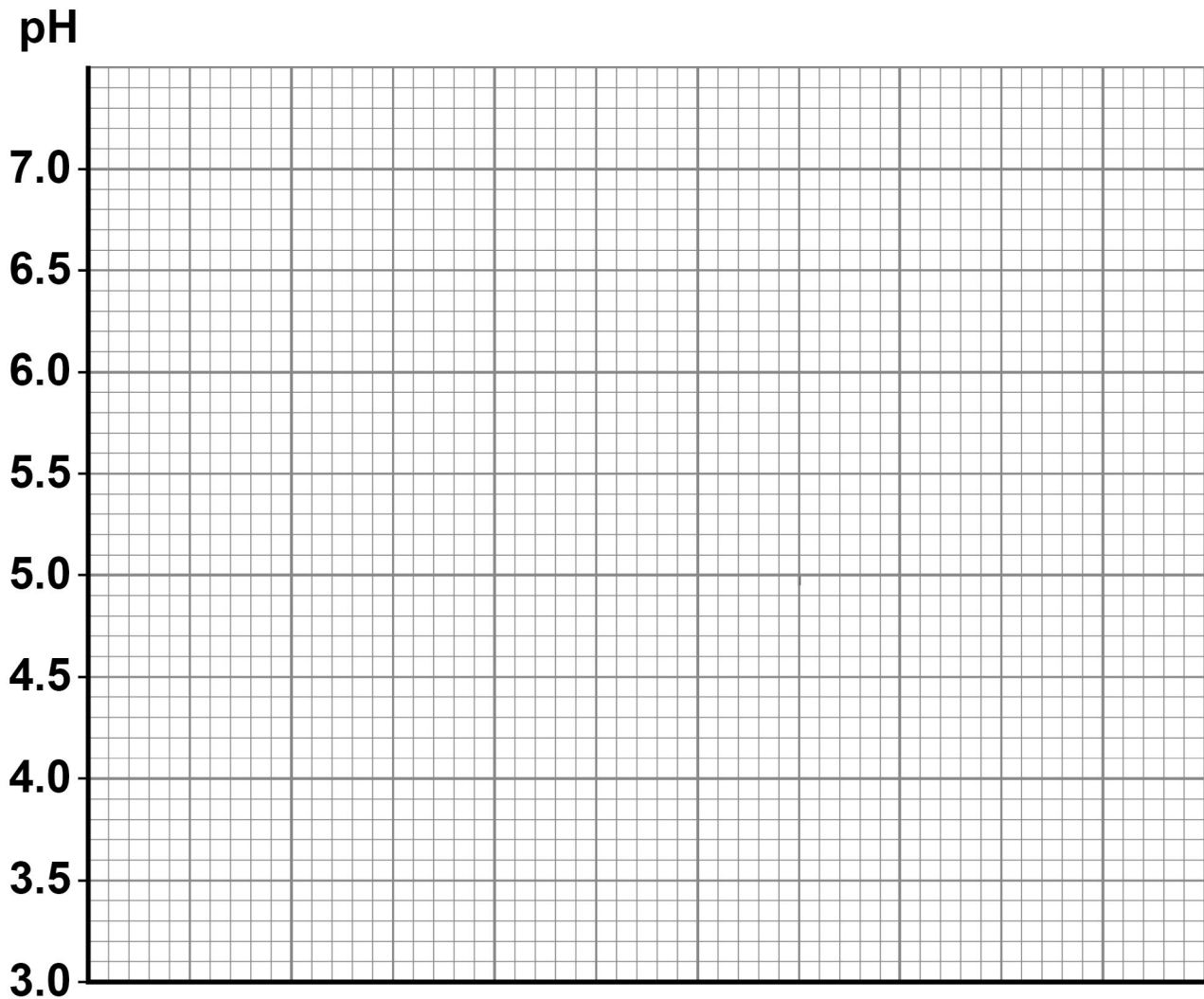
Complete **FIGURE 16**, on the opposite page. [4 marks]

You should:

- label the x-axis
- use a suitable scale for the x-axis
- plot the data from **TABLE 2**
- draw a line of best fit.



FIGURE 16



0	9	.	4
---	---	---	---

The data you plotted in Question 09.3 were obtained at 20 °C.

Sketch a line on FIGURE 16 to show the results you would expect at 25 °C.

Label this line '25 °C'. [2 marks]

[Turn over]



1	0
---	---

**Human body temperature is controlled within very narrow limits.**

**Scientists investigated the effect of drinking ice-cold water on:**

- **internal body temperature**
- **the rate of sweating.**

**This is the method used.**

- 1. Sit a person inside a room kept at a constant temperature of 25 °C.**
- 2. Measure the person's internal body temperature near the brain.**
- 3. Measure the person's rate of sweating.**
- 4. After 20 minutes, give the person 500 cm<sup>3</sup> of ice-cold water to drink.**
- 5. Continue to measure the person's internal body temperature and sweating rate for a further 50 minutes.**



1	0	.	1
---	---	---	---

**Give the reason why the person should NOT move during the investigation. [1 mark]**

---

---

**[Turn over]**



FIGURE 17, below, and FIGURE 18, on the opposite page, show the scientists' results.

FIGURE 17

Internal body  
temperature  
in °C

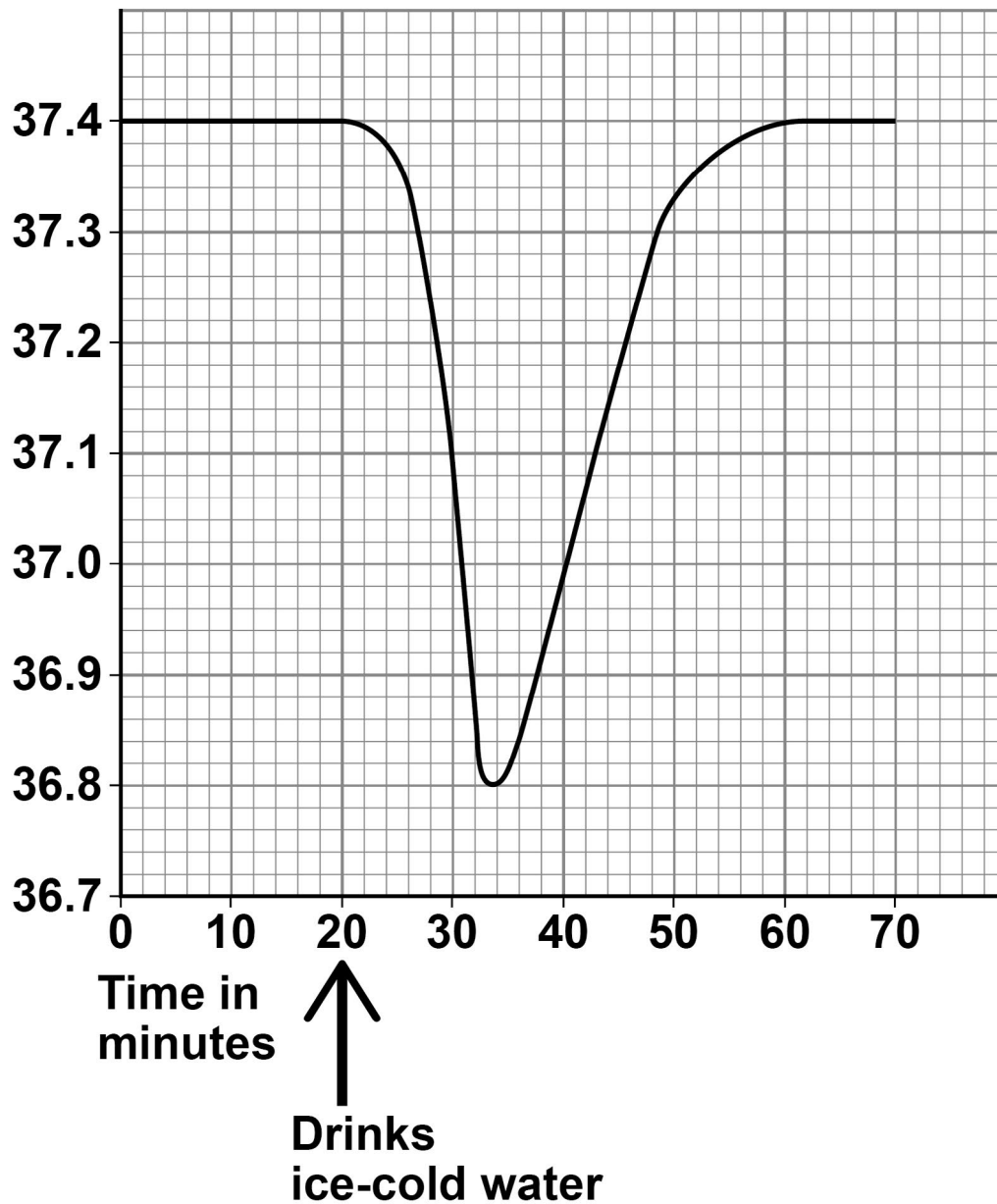
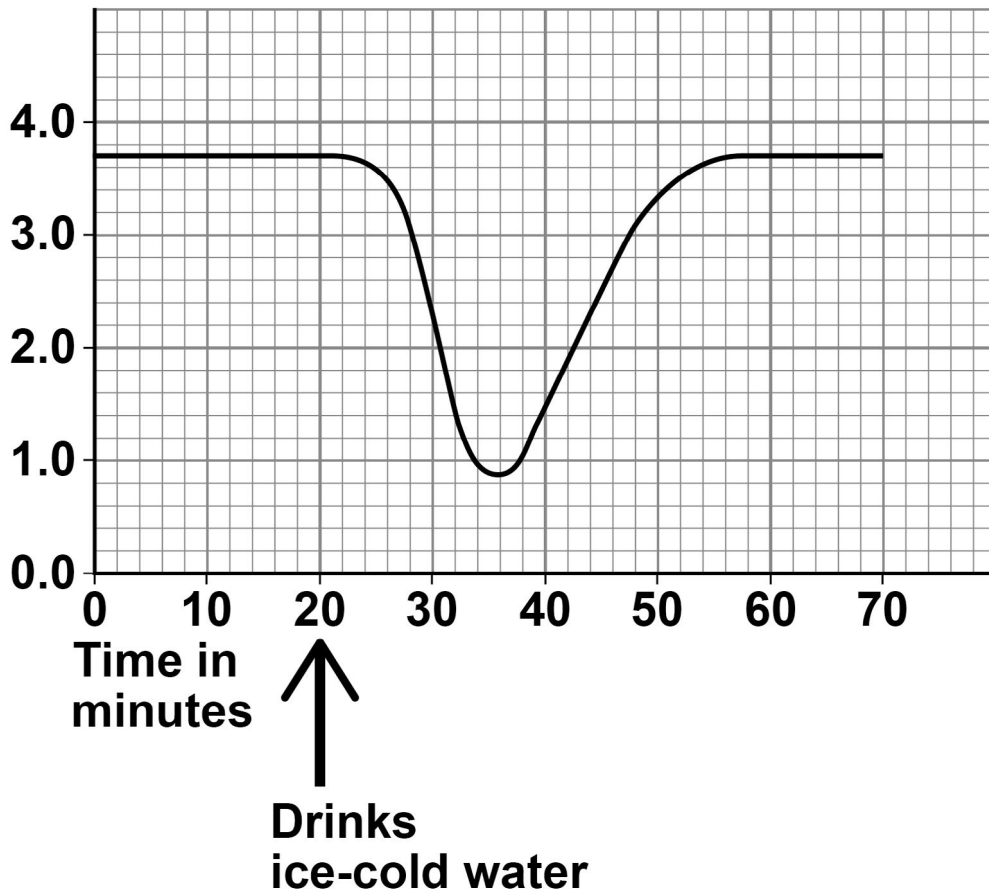




FIGURE 18

Rate of sweating  
in arbitrary  
units



[Turn over]



**BLANK PAGE**



**1 0 . 2**

**What is this person's normal internal body temperature? [1 mark]**

**Tick (✓) ONE box.**

**36.8 °C****37.0 °C****37.4 °C**

**[Turn over]**



The results show that when the ice-cold water was drunk, the temperature near the brain decreased.

10.3

Explain why the temperature near the brain decreased.  
[2 marks]

---

---

---

---

---

---

---

---

10.4

The thermoregulatory centre in the brain responds to the decrease in temperature.

How does the thermoregulatory centre send information to sweat glands in the skin? [1 mark]

---

---

---



1	0	.	5
---	---	---	---

The rate of sweating changes between 24 minutes and 36 minutes.

Explain how this change helps to maintain the person's normal body temperature. [2 marks]

---

---

---

---

---

---

---

---

[Turn over]



**BLANK PAGE**



**10.6**

**During exercise, the skin appears red.**

**What causes the skin to appear red? [1 mark]**

**Tick (✓) ONE box.**

**Blood vessels moving closer to the skin surface**

**Constriction of blood vessels in the skin**

**Decrease in heart rate**

**Dilation of blood vessels in the skin**

**[Turn over]**

8

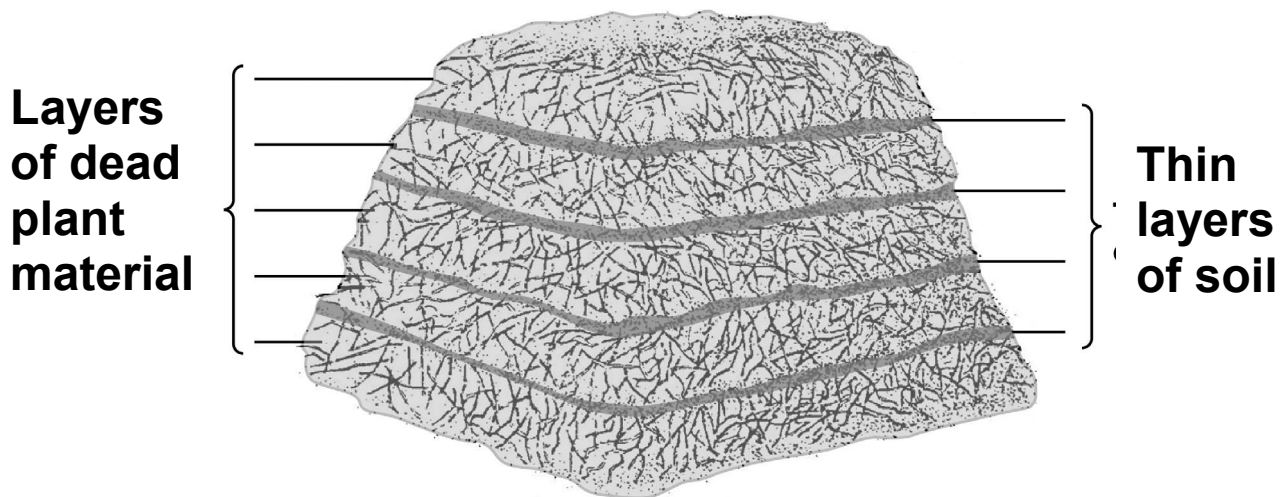


1	1
---	---

Decay occurs in a compost heap.

FIGURE 19 shows a compost heap.

FIGURE 19



Describe:

- how microorganisms in the layers of soil help to recycle chemicals in the dead plants
- how the chemicals are used again by living plants.

[6 marks]

---

---

---

---





---

---

---

---

---

---

---

---

---

---

---

---

---

---

---

---

---

---

---

---

---

---

---

[Turn over]





**Additional page, if required.**

**Write the question numbers in the left-hand margin.**


**Additional page, if required.**

**Write the question numbers in the left-hand margin.**




**Additional page, if required.**

**Write the question numbers in the left-hand margin.**


**BLANK PAGE**

For Examiner's Use	
Question	Mark
1	
2	
3	
4	
5	
6	
7	
8	
9	
10	
11	
<b>TOTAL</b>	

**Copyright information**

For confidentiality purposes, all acknowledgements of third-party copyright material are published in a separate booklet. This booklet is published after each live examination series and is available for free download from [www.aqa.org.uk](http://www.aqa.org.uk).

Permission to reproduce all copyright material has been applied for. In some cases, efforts to contact copyright-holders may have been unsuccessful and AQA will be happy to rectify any omissions of acknowledgements. If you have any queries please contact the Copyright Team.

Copyright © 2021 AQA and its licensors. All rights reserved.

**IB/M/CD/Jun21/8461/2F/E3**

8 6



J U N 2 1 8 4 6 1 / 2 F