

A-level GEOGRAPHY

Paper 1 Physical Geography

Insert

This insert contains:

- Figure 1 for use with Question 1
- Figure 2 for use with Question 1
- Figures 3a and 3b for use with Question 2
- Figures 5a and 5b for use with Question 3
- Figures 7a and 7b for use with Question 4
- Figure 9 for use with Question 5
- Figures 10a, 10b and 10c for use with Question 5
- Figures 11a and 11b for use with Question 6
- Figure 12 for use with Question 6.

Figure 1

Changes in the terrestrial water system in response to human activity and climate change between 2012 and 2016

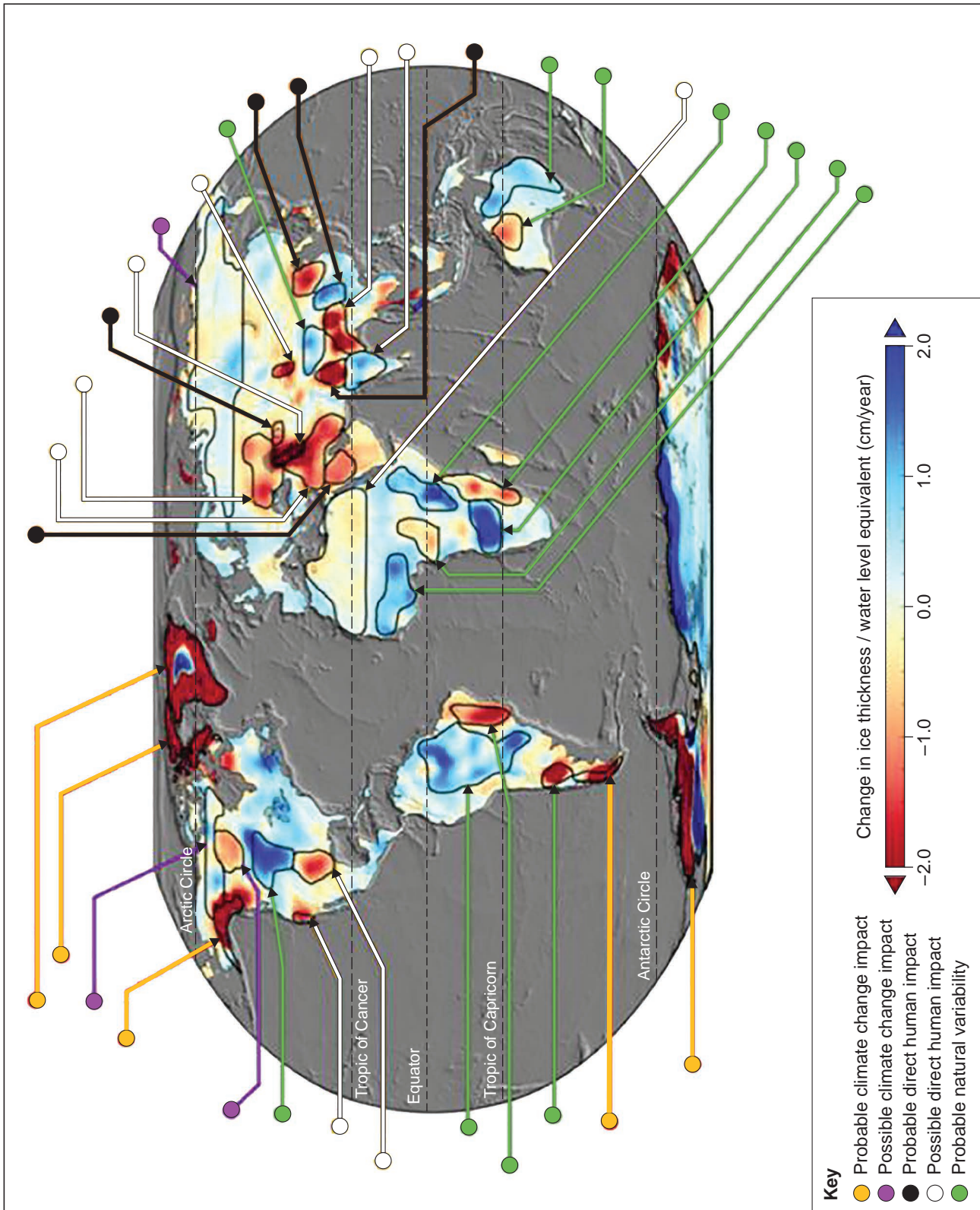


Figure 2

Regional changes in forest cover between 1990 and 2010

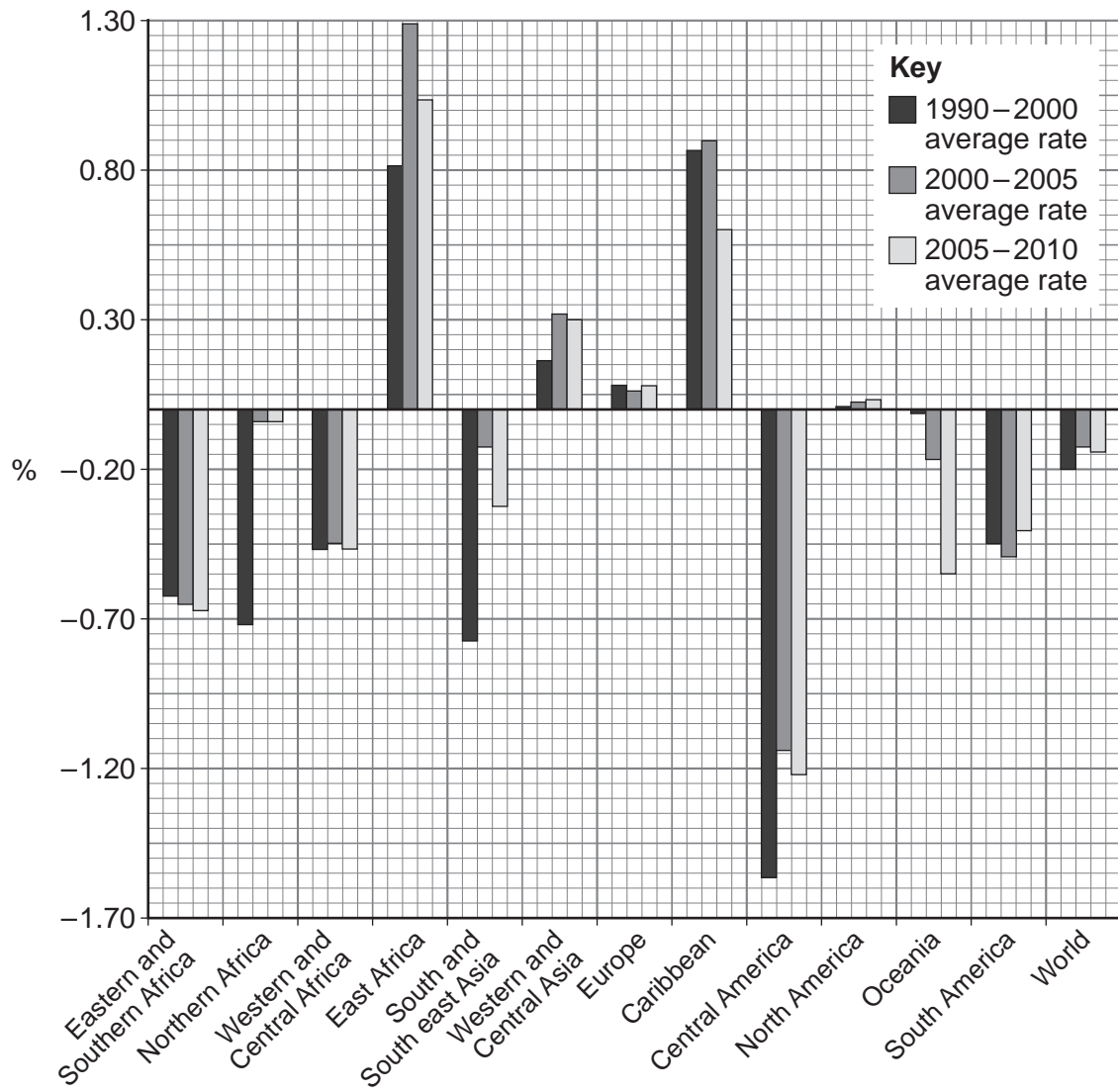


Figure 3a

Annual mean temperatures in Australia in 2018 compared to historical temperature observations

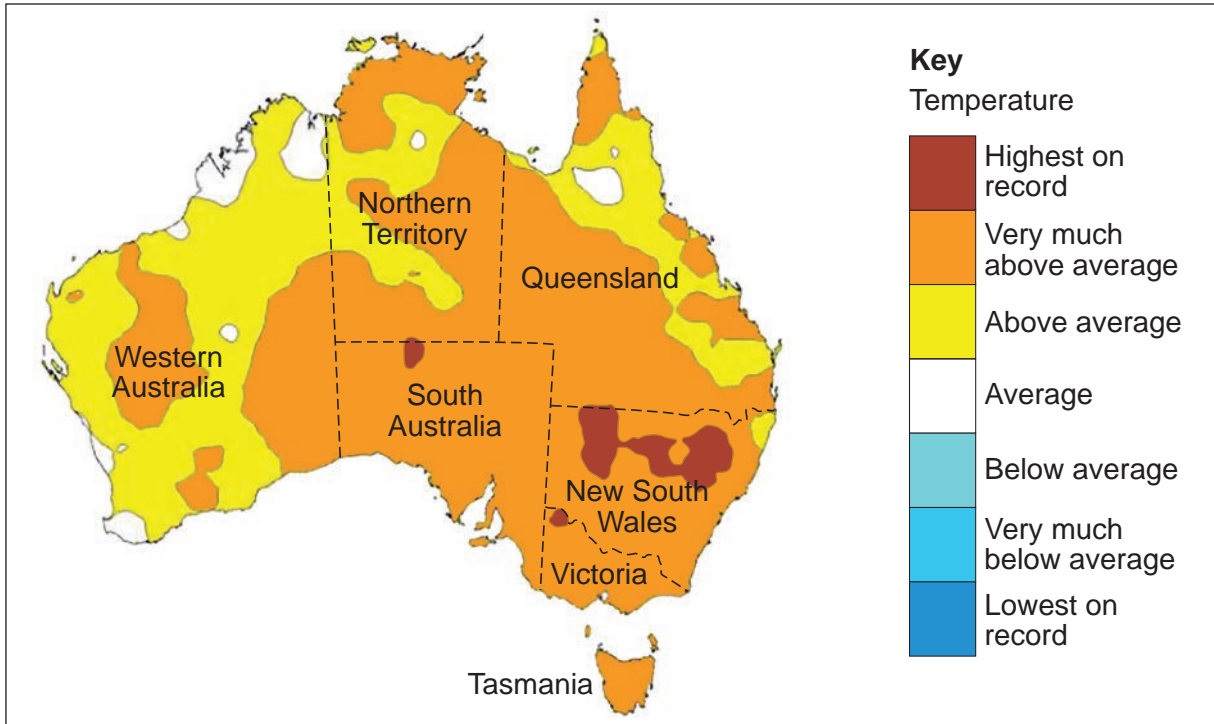


Figure 3b

Annual rainfall in Australia in 2018 compared to historical rainfall observations

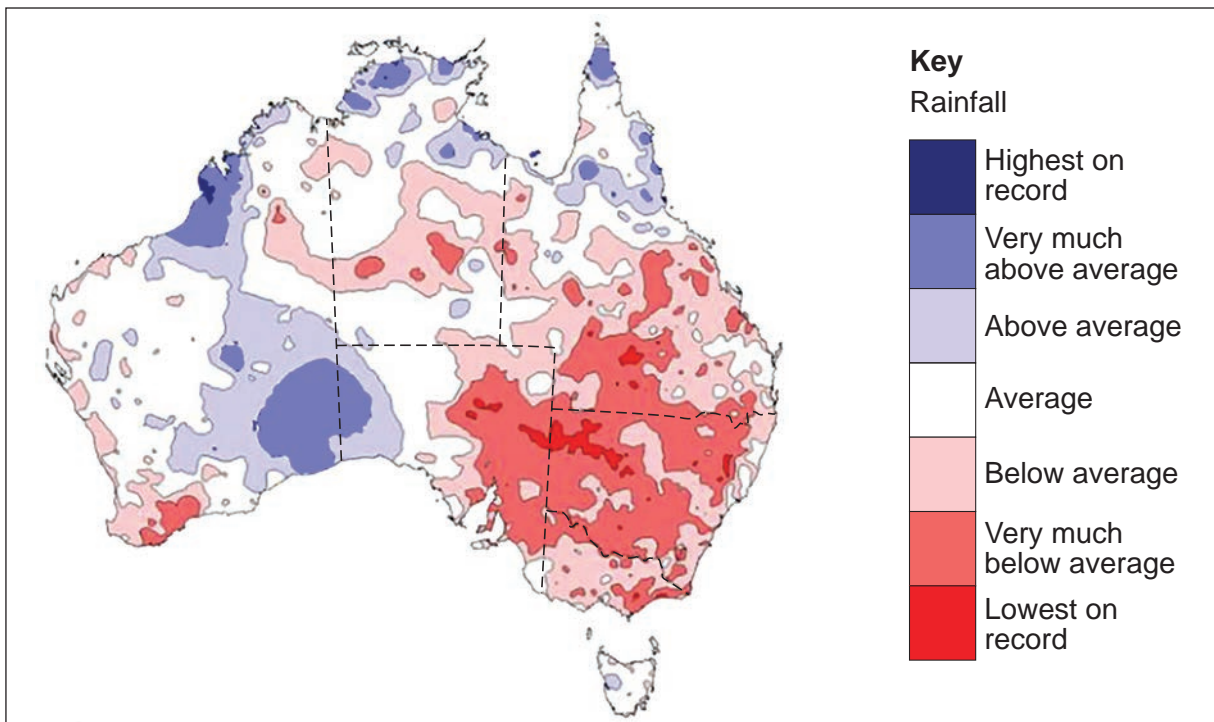


Figure 5a

Geographical variation in the 1992–2014 global sea level change using satellite data

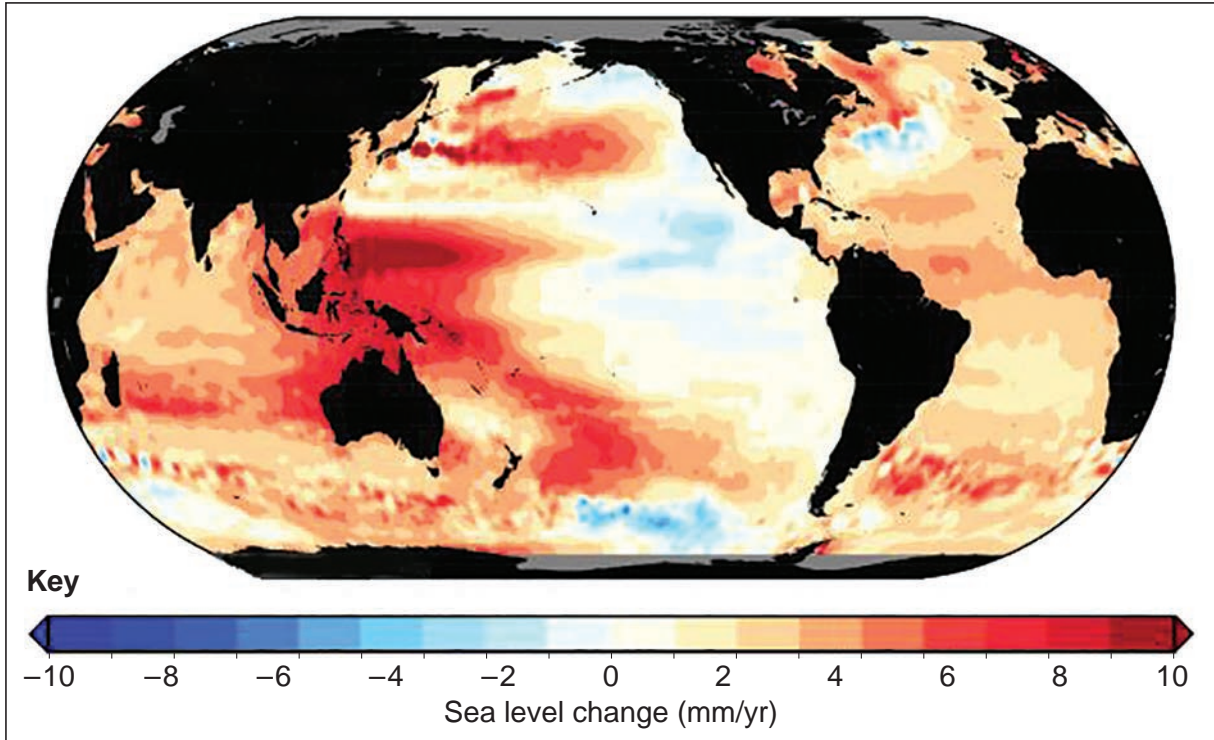
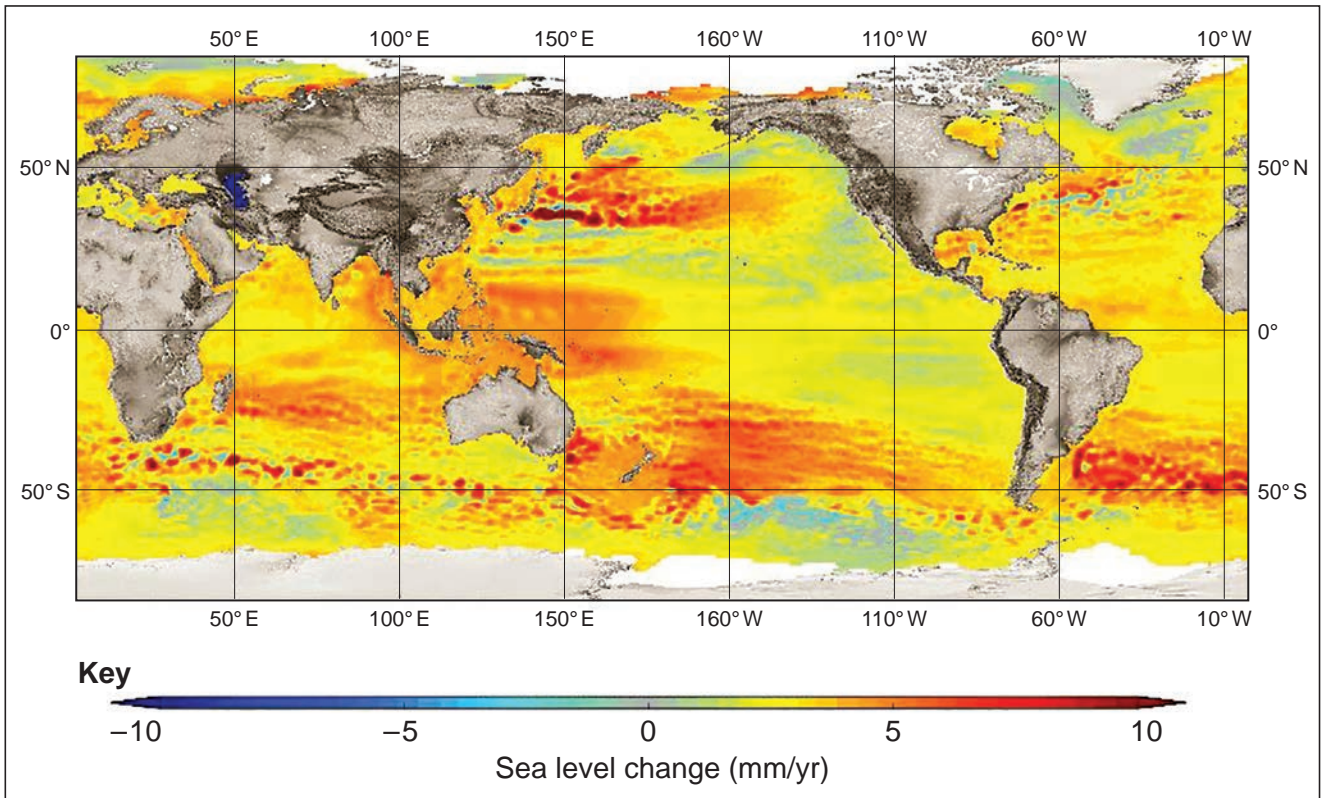


Figure 5b

Geographical variation in the 1992–2019 global sea level change using another source of satellite data



Turn over ►

Figure 7a

The distribution, size and type of selected Himalayan glaciers

**Figure 7a not reproduced here due to
third-party copyright restrictions**

Figure 7b

The change in mass balance of the selected glaciers between 2000 and 2016

**Figure 7b not reproduced here due to
third-party copyright restrictions**

Figure 9

Responses by some companies and individuals to the Haiti earthquake, 2010

**Figure 9 not reproduced here due to
third-party copyright restrictions**

Turn over ►

Figures 10a, 10b and 10c

**Data related to coastal flooding risk in Louisiana, USA, based upon a 2017 master plan.
The information is based upon a 1 in 100 year extreme flood event.**

Figure 10a

**Figure 10a not reproduced here due to
third-party copyright restrictions**

Note: Louisiana is located on the southern coast of the United States of America. Tropical storms are regular occurrences in the area. The local geomorphology is a contributory factor to the hazard.

Figure 10b

**Figure 10b not reproduced here due to
third-party copyright restrictions**

Figure 10c

**Figure 10c not reproduced here due to
third-party copyright restrictions**

Note: In broad terms, social vulnerability refers to the characteristics of a person or group that influences their capacity to anticipate, cope with, resist, or recover from the impact of the flood event.

Figure 11a
The cause of deforestation
in equatorial west Africa, 2000–2014

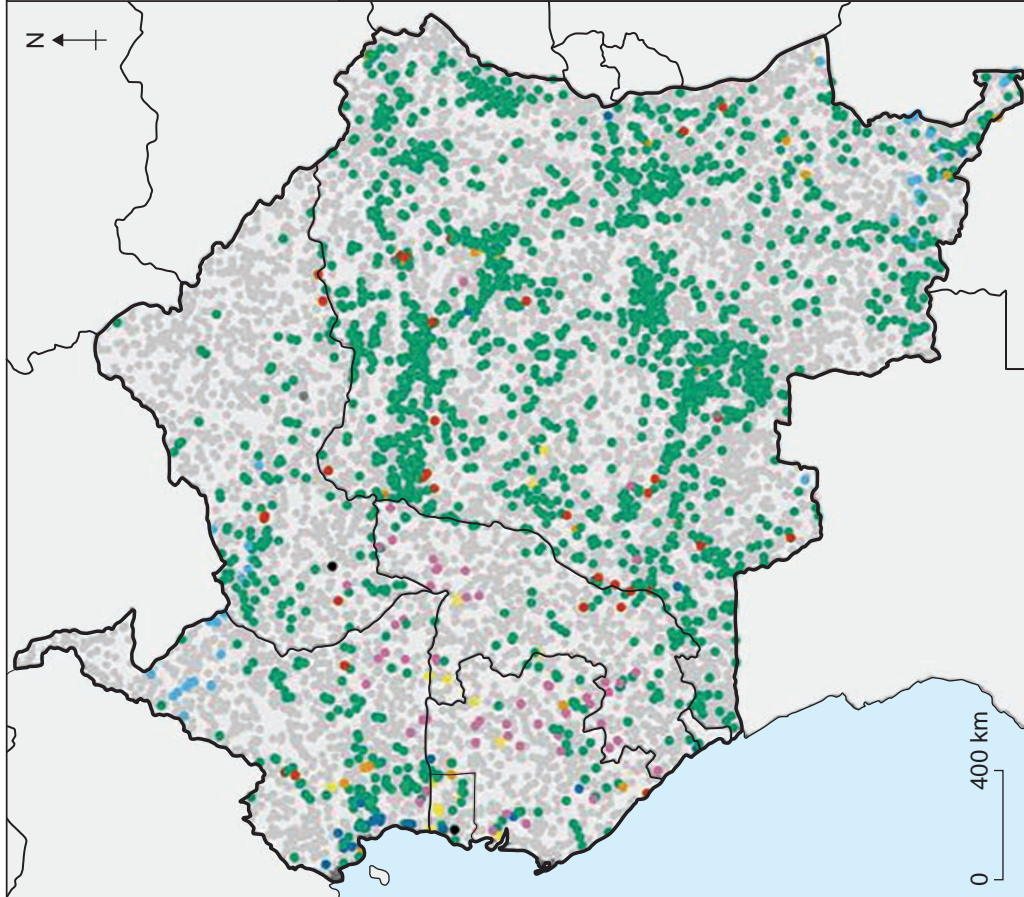


Figure 11b
National estimates of forest loss by area
and cause in equatorial west Africa, 2000–2014

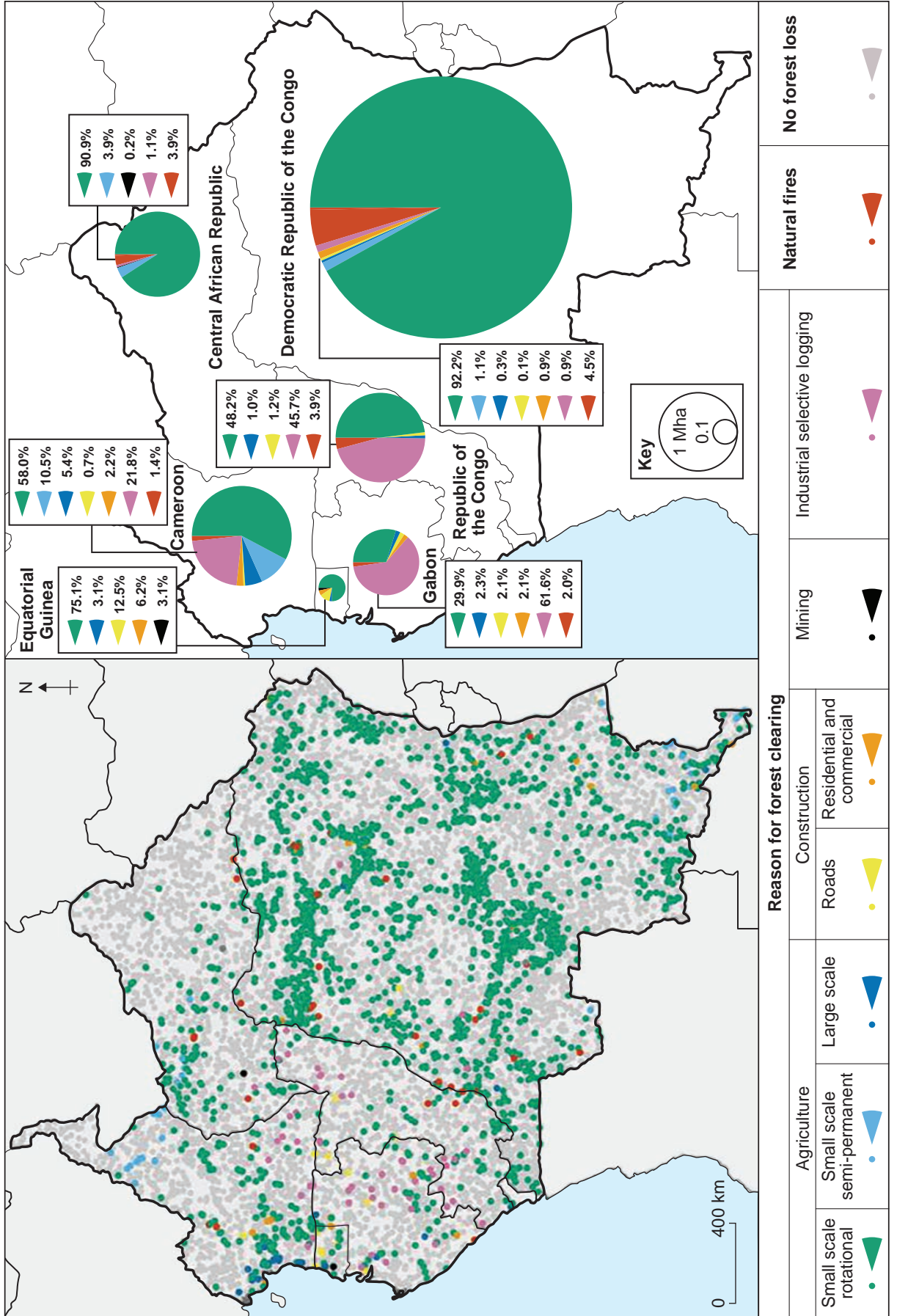
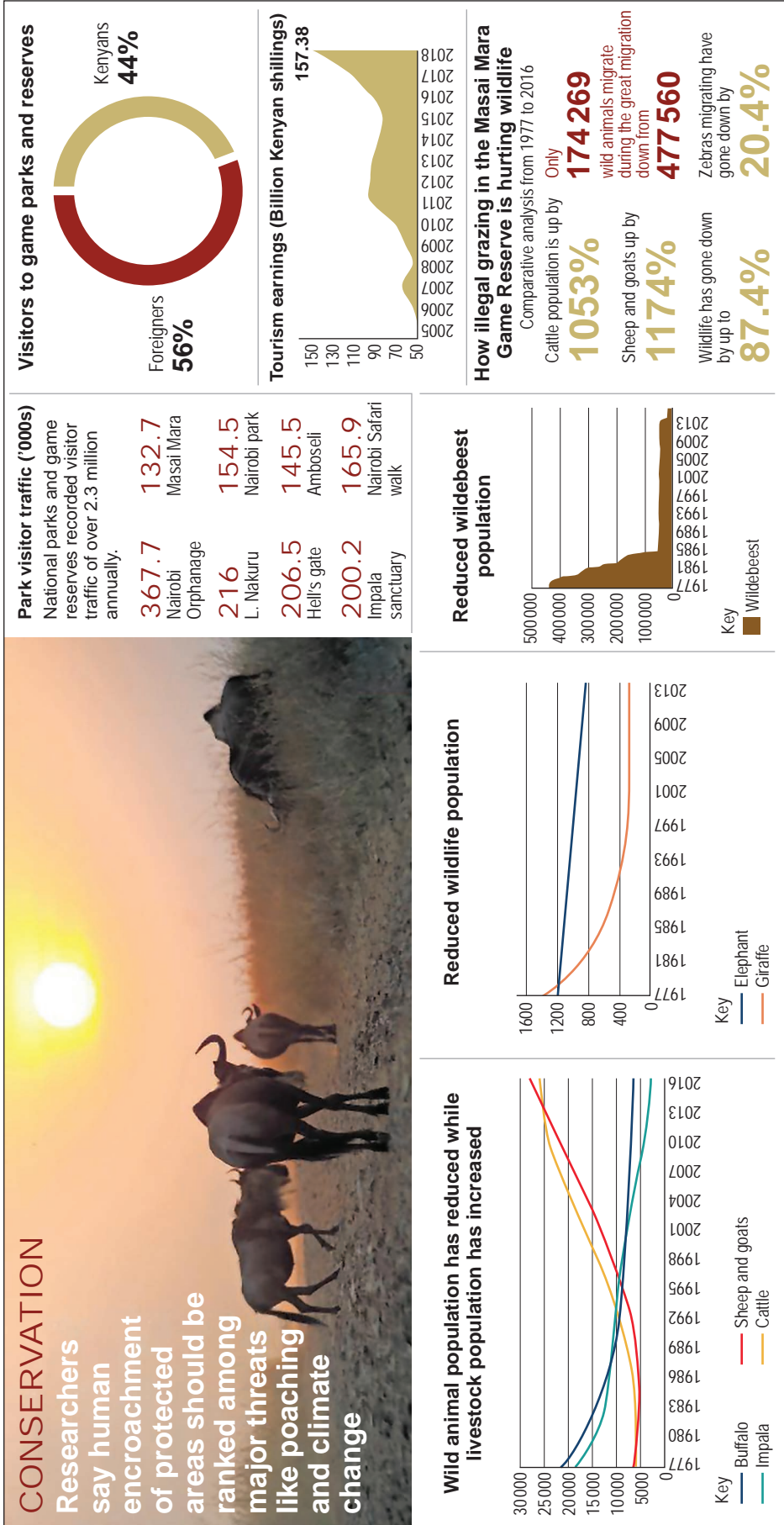


Figure 12

A range of issues facing game parks and reserves in Kenya, east Africa



END OF SOURCES

There are no resources printed on this page

Copyright information

For confidentiality purposes, all acknowledgements of third-party copyright material are published in a separate booklet. This booklet is published after each live examination series and is available for free download from www.aqa.org.uk.

Permission to reproduce all copyright material has been applied for. In some cases, efforts to contact copyright-holders may have been unsuccessful and AQA will be happy to rectify any omissions of acknowledgements. If you have any queries please contact the Copyright Team.

Copyright © 2022 AQA and its licensors. All rights reserved.

