



**A-level  
GEOGRAPHY**

**Paper 2 Human Geography**

**7037/2**

**Insert**

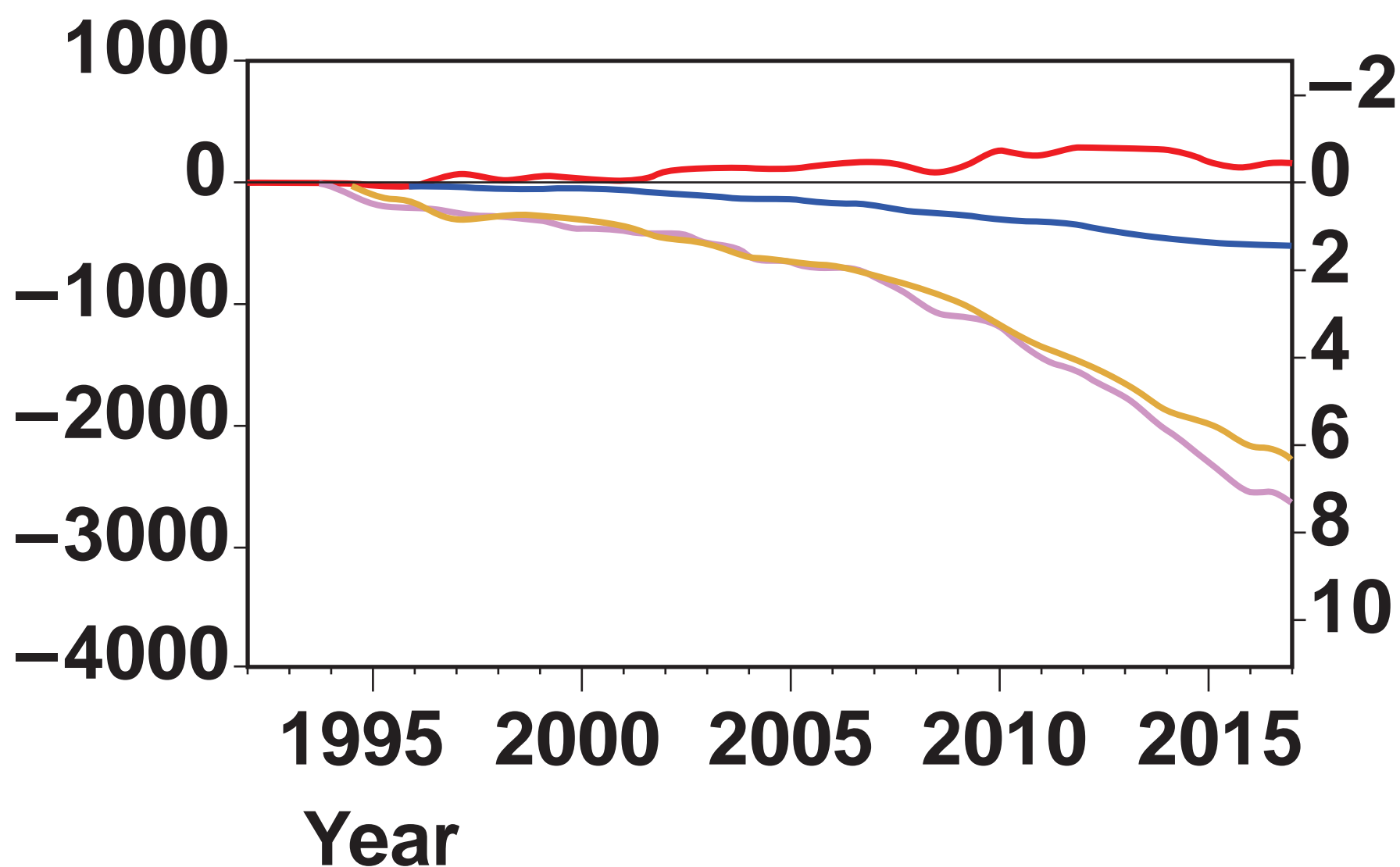
**[Turn over]**

## FIGURE 1a

The change in Antarctic ice and the relative contribution to sea-level change between 1992 and 2017

Ice mass  
change  
gigatonnes  
(Gt)

Contribution  
to sea-level  
change  
(mm)

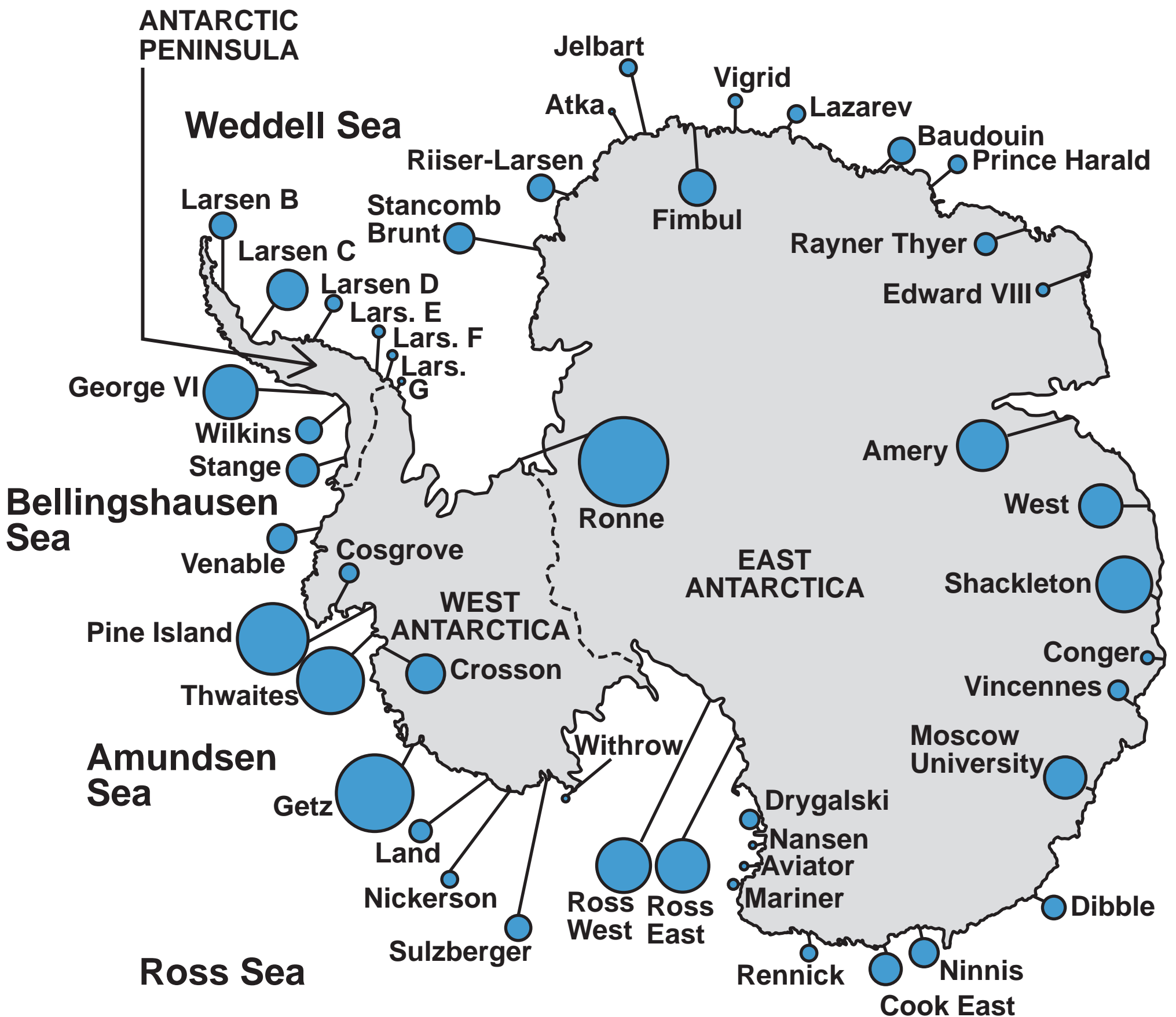


### KEY

- Antarctica (whole continent)
- West Antarctica
- East Antarctica
- Antarctic Peninsula

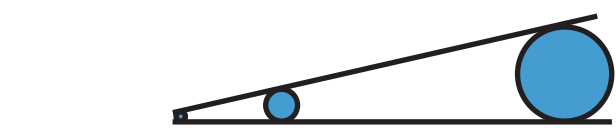
## FIGURE 1b

### The distribution of the changing ice extent across Antarctica in 2013



## KEY

Total loss of ice in selected areas measured in gigatonnes (Gt)



1 Gt 10 Gt 100 G

0 500 1000 km

[Turn over]



**FIGURE 2**

**An image shows a large container ship in a port. The ship is carrying a number of containers with the word 'MAERSK' on. In the background there are a number of small islands.**

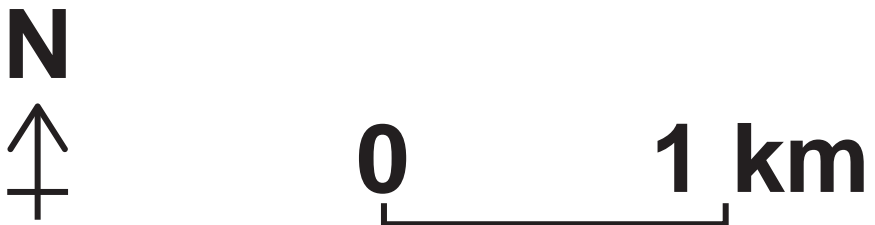
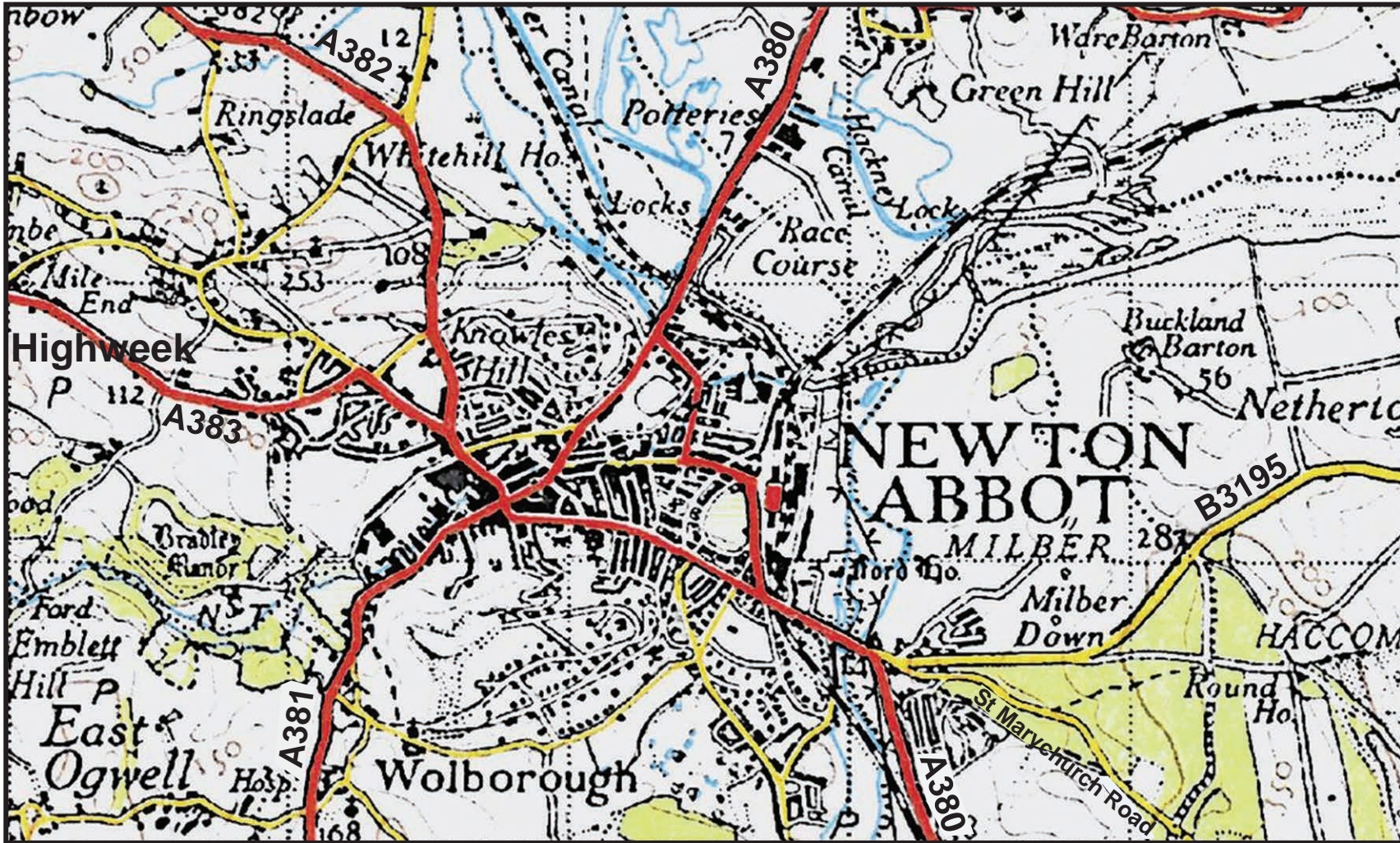
**BLANK PAGE**

**[Turn over]**



**FIGURE 3a**

**A map of Newton Abbot, a town in Devon,  
in 1946**





## FIGURE 3b

A satellite image of Newton Abbot in 2019



[Turn over]



## FIGURE 4

**A painting of Manchester in 1946  
by LS Lowry**



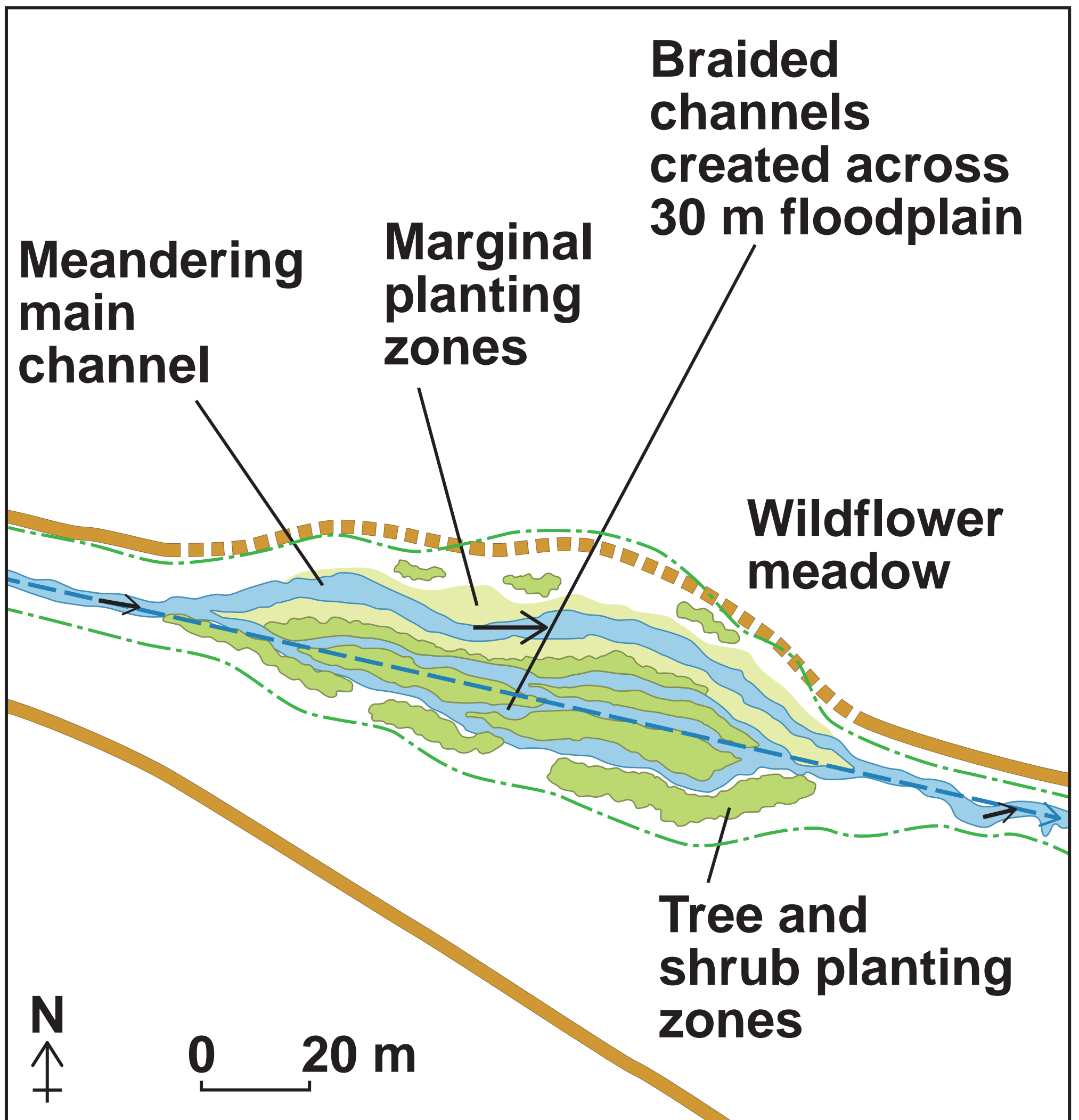


**BLANK PAGE**

**[Turn over]**

**FIGURE 5a**

**Information about a river restoration project on the River Alt in Knowsley, Merseyside which took place in 1996**





**KEY**

-  **Path**
-  **Diverted path**
-  **Extent of river restoration project**
-  **Course of river before restoration**

**Note: Marginal plants are plants that grow on the edge of water areas such as rivers and ponds. They are tolerant to water-logged soils.**

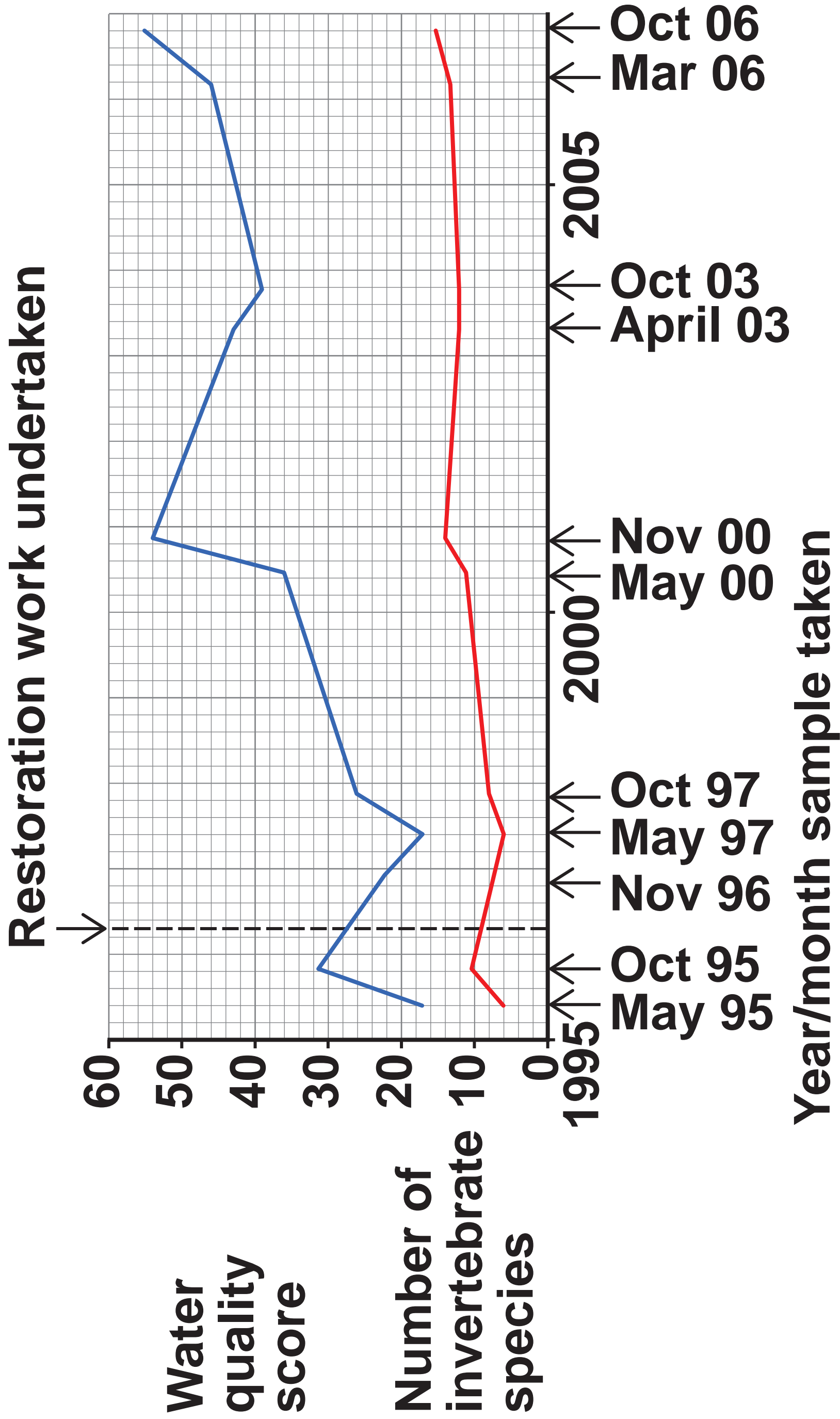
**Braided channels occur where a main channel splits into several smaller channels.**

**These channels are often narrower and shallower than the main channel, encouraging a diverse ecology.**

**[Turn over]**

**FIGURE 5b**

**Water quality and biodiversity in the River Alt between 1995 and 2006**





## KEY

— Water quality

— Number of invertebrate species

**Note:** The higher the water quality score, the cleaner the water. The score is based on the actual number of large invertebrates found in a water sample.

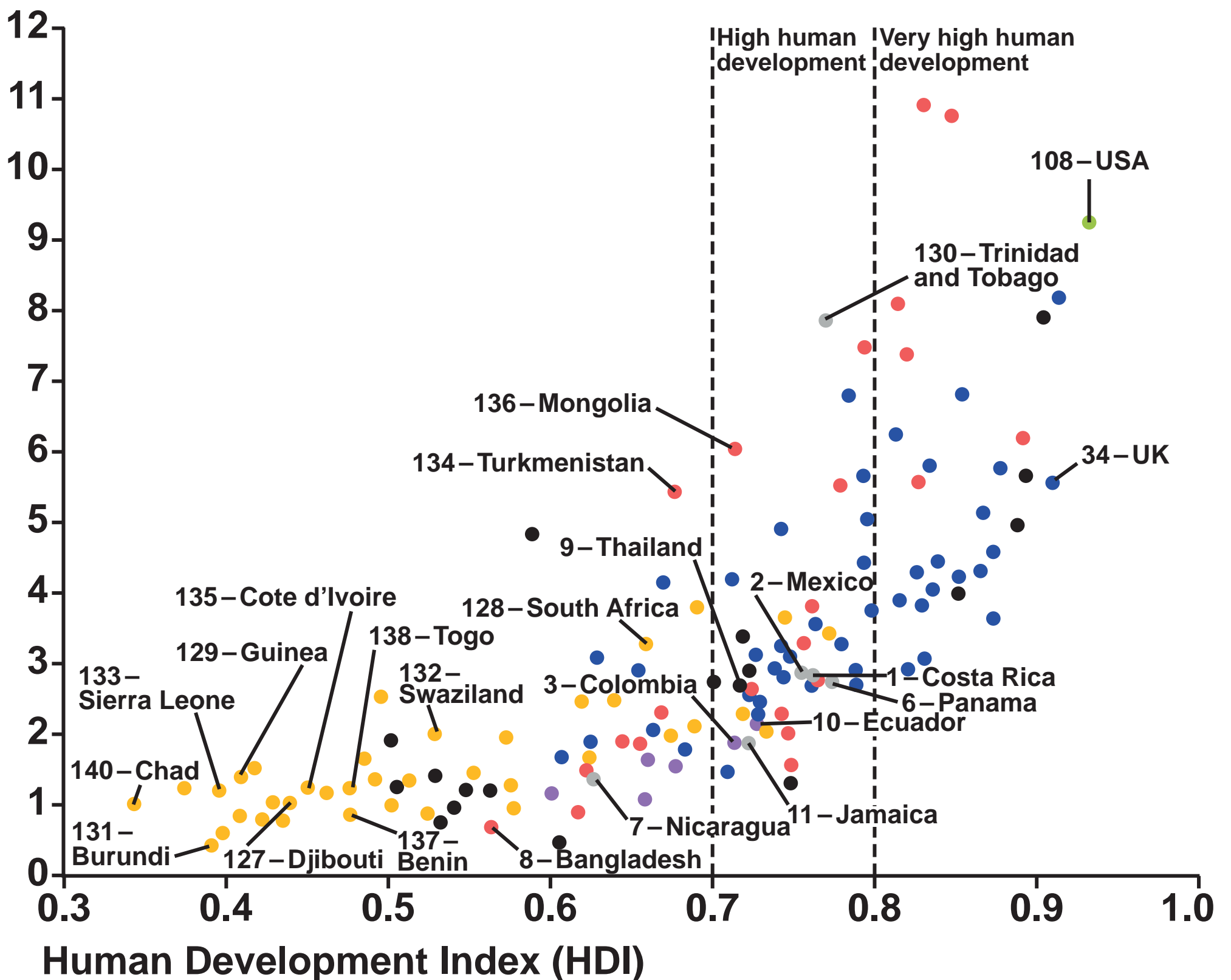
**Invertebrates are organisms without a back-bone, for example worms and insects.**

**[Turn over]**

## FIGURE 6

# The ecological footprint, Human Development Index (HDI) and Happy Planet Index in selected countries for 2016

Ecological footprint  
global hectares  
per person (gHa)





**KEY**

- Africa
- Middle East / Central and South Asia
- Asia-Pacific
- South America
- Central America / Caribbean
- North America
- Europe

**7 – Position in Happy Planet Index****Note:**

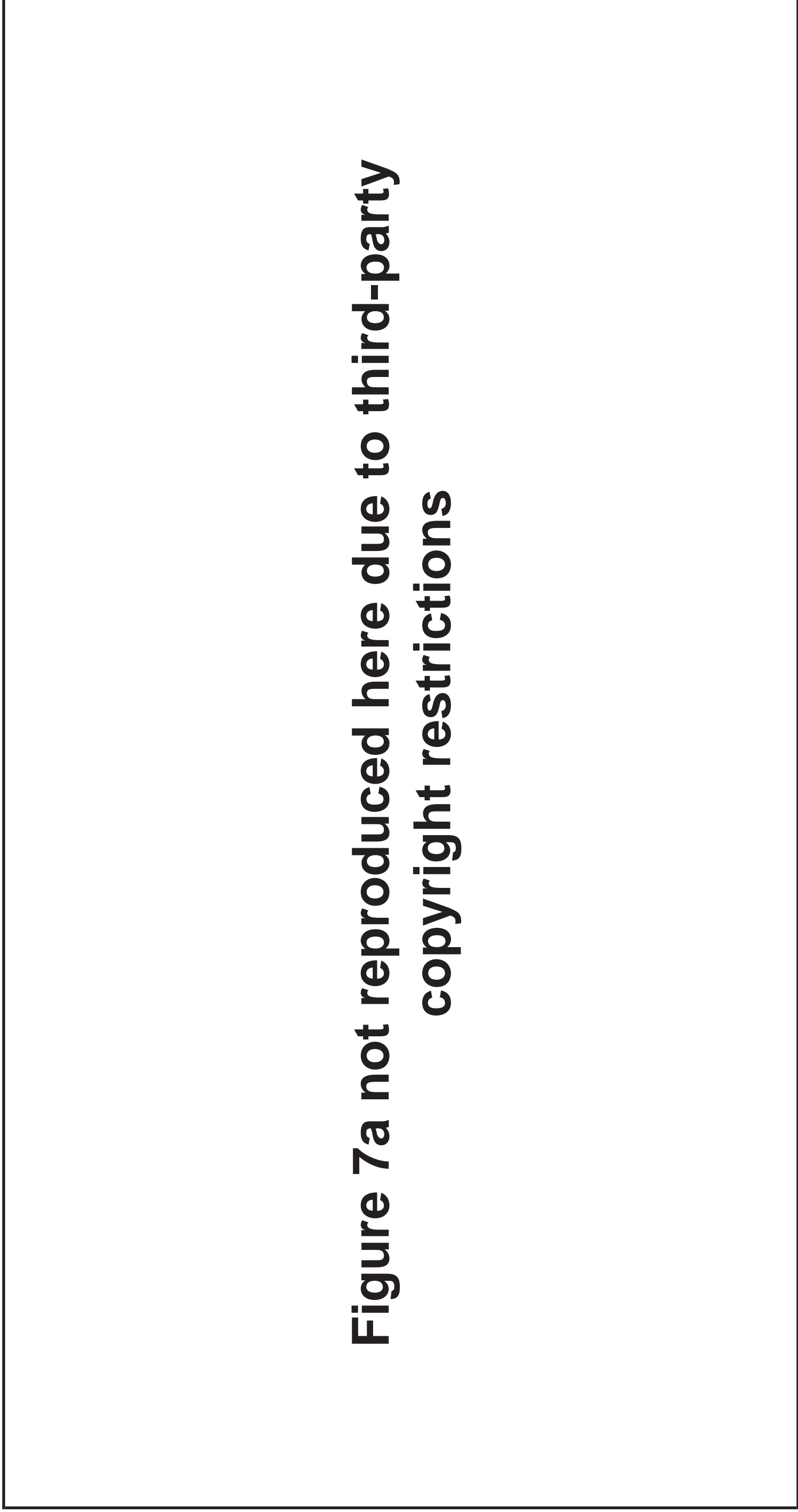
**The Happy Planet Index is based on a ratio of a country's well-being measurements (such as life expectancy, equality and satisfaction) divided by its ecological footprint.**

**The numbers reflect the position in the index. The higher the number, the happier the nation.**

**[Turn over]**

## FIGURE 7a

**The amount of nuclear waste being stored at nuclear reactor sites in the USA in 2010**



**Figure 7a not reproduced here due to third-party  
copyright restrictions**

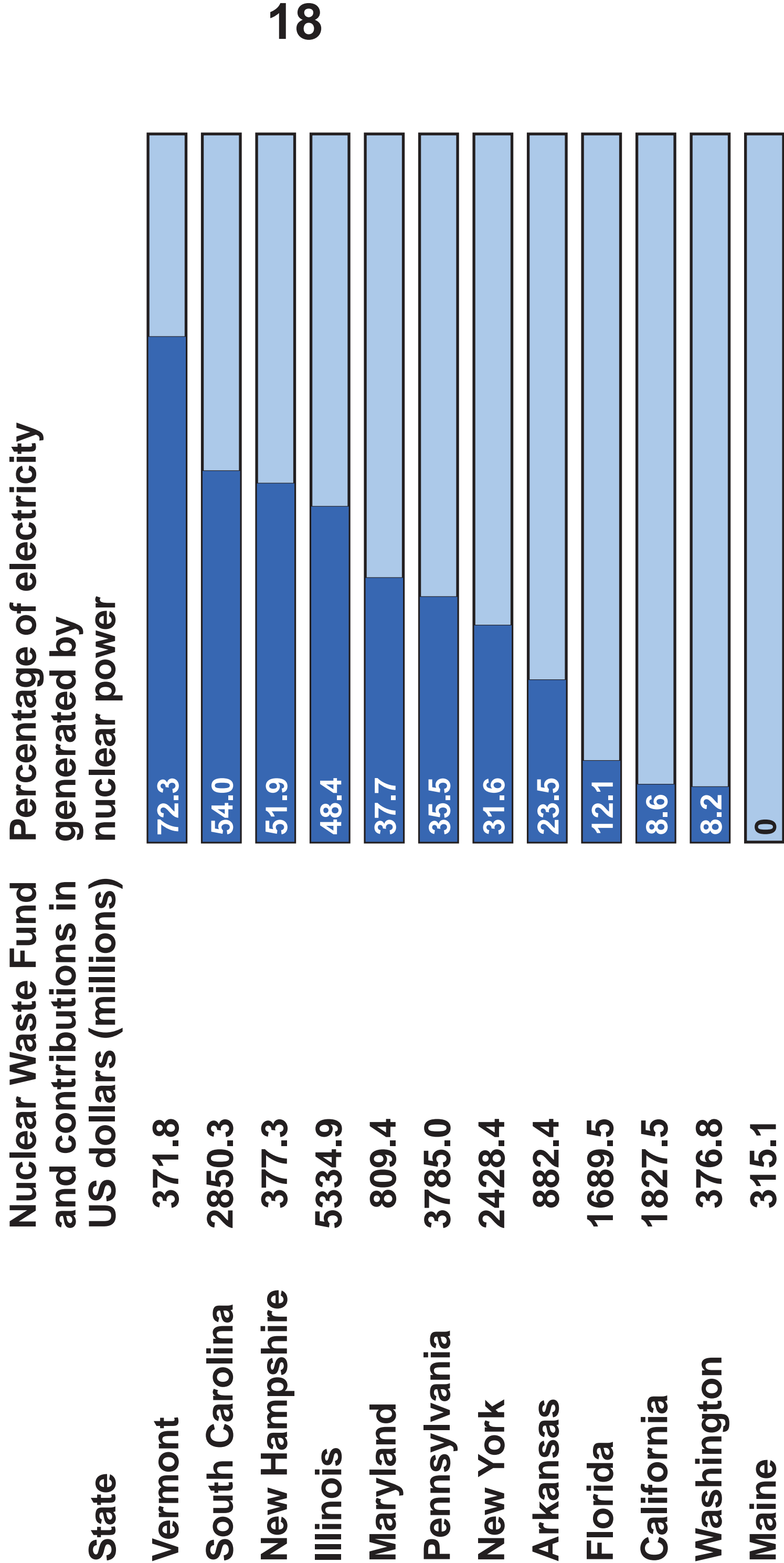


**Figure 7a not reproduced here due to third-party  
copyright restrictions**

**[Turn over]**

FIGURE 7b

Nuclear energy use and the waste fund contribution in selected states in 2014





## **Note:**

**The Nuclear Waste Fund programme is a strategy to try and uphold a US government promise to dispose of its nuclear waste. Money is collected from nuclear electricity consumers to fund the collection and disposal of nuclear waste.**

**However, in 2014, 71 000 tonnes of waste had still not been disposed of.**

**END OF SOURCES**

# BLANK PAGE

## Copyright information

For confidentiality purposes, all acknowledgements of third-party copyright material are published in a separate booklet. This booklet is published after each live examination series and is available for free download from [www.aqa.org.uk](http://www.aqa.org.uk).

Permission to reproduce all copyright material has been applied for. In some cases, efforts to contact copyright-holders may have been unsuccessful and AQA will be happy to rectify any omissions of acknowledgements. If you have any queries please contact the Copyright Team.

Copyright © 2022 AQA and its licensors. All rights reserved.

**G/KL/Jun22/7037/2/Insert/E1**

