



Surname _____

Other Names _____

Centre Number _____

Candidate Number _____

Candidate Signature _____

I declare this is my own work.

**A-level
MATHEMATICS**

Paper 2

7357/2

Time allowed: 2 hours

At the top of the page, write your surname and other names, your centre number, your candidate number and add your signature.

[Turn over]



- You must have the AQA Formulae for A-level Mathematics booklet.
- You should have a graphical or scientific calculator that meets the requirements of the specification.

INSTRUCTIONS

- Use black ink or black ball-point pen. Pencil should only be used for drawing.
- Answer ALL questions.
- You must answer each question in the space provided for that question. If you need extra space for your answer(s), use the lined pages at the end of this book. Write the question number against your answer(s).
- Do NOT write on blank pages.
- Show all necessary working; otherwise marks for method may be lost.
- Do all rough work in this book. Cross through any work that you do not want to be marked.



INFORMATION

- **The marks for questions are shown in brackets.**
- **The maximum mark for this paper is 100.**

ADVICE

- **Unless stated otherwise, you may quote formulae, without proof, from the booklet.**
- **You do not necessarily need to use all the space provided.**

**DO NOT TURN OVER UNTIL TOLD TO
DO SO**



SECTION A

Answer ALL questions in the spaces provided.

1 A circle has centre $(4, -5)$ and radius 6

Find the equation of the circle.

Tick (\checkmark) ONE box. [1 mark]

$$(x - 4)^2 + (y + 5)^2 = 6$$

$$(x + 4)^2 + (y - 5)^2 = 6$$

$$(x - 4)^2 + (y + 5)^2 = 36$$

$$(x + 4)^2 + (y - 5)^2 = 36$$



2 State the value of

$$\lim_{h \rightarrow 0} \frac{\sin(\pi + h) - \sin \pi}{h}$$

Circle your answer. [1 mark]

$\cos h$

-1

0

1

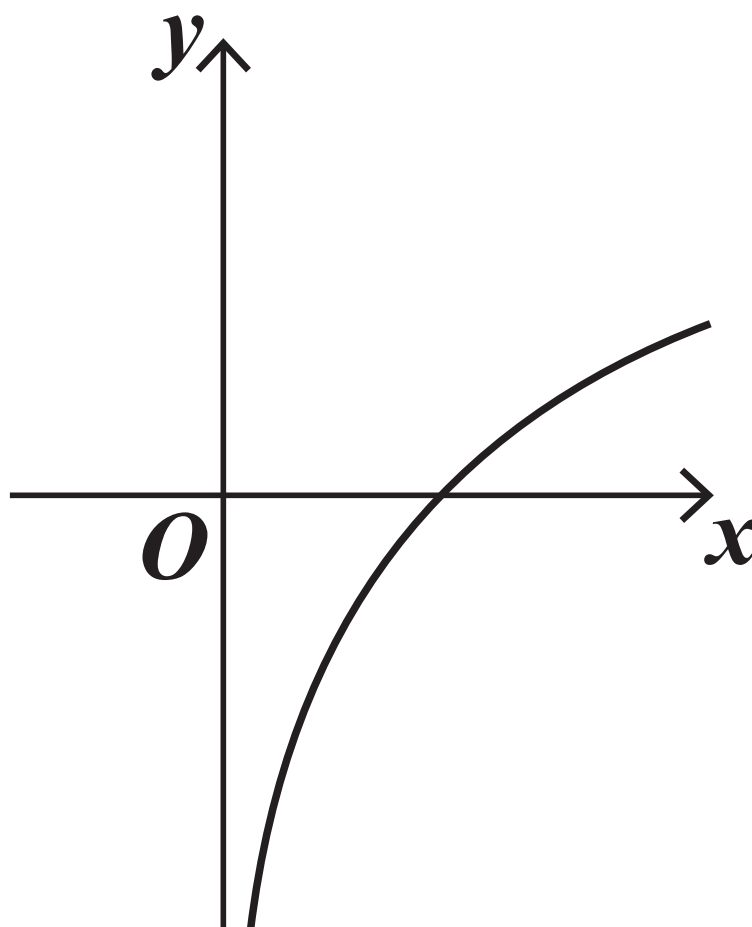
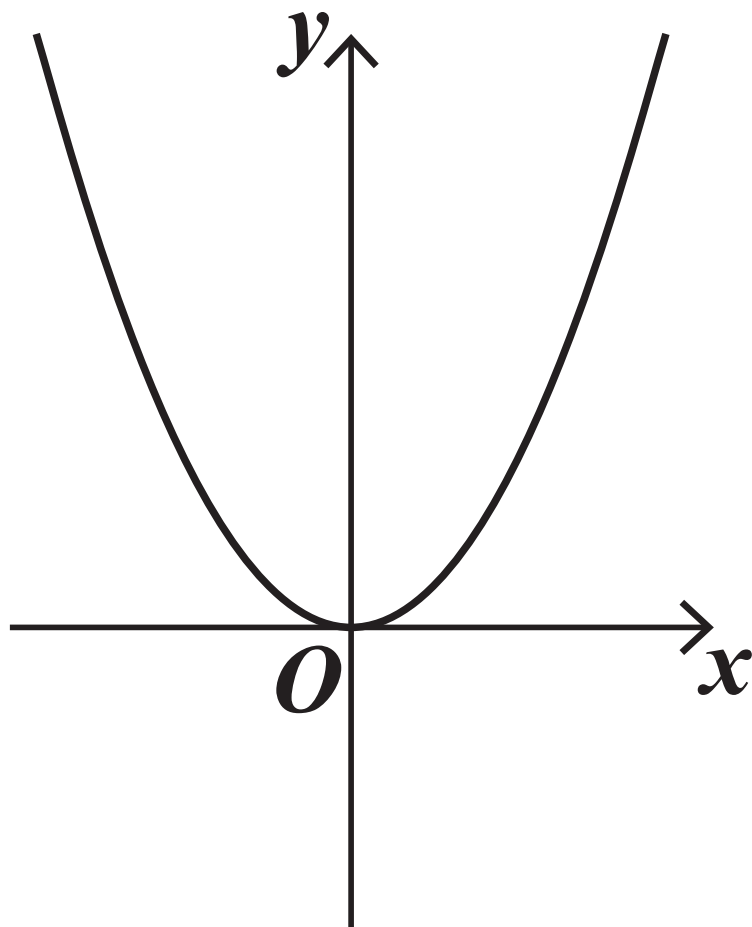
[Turn over]

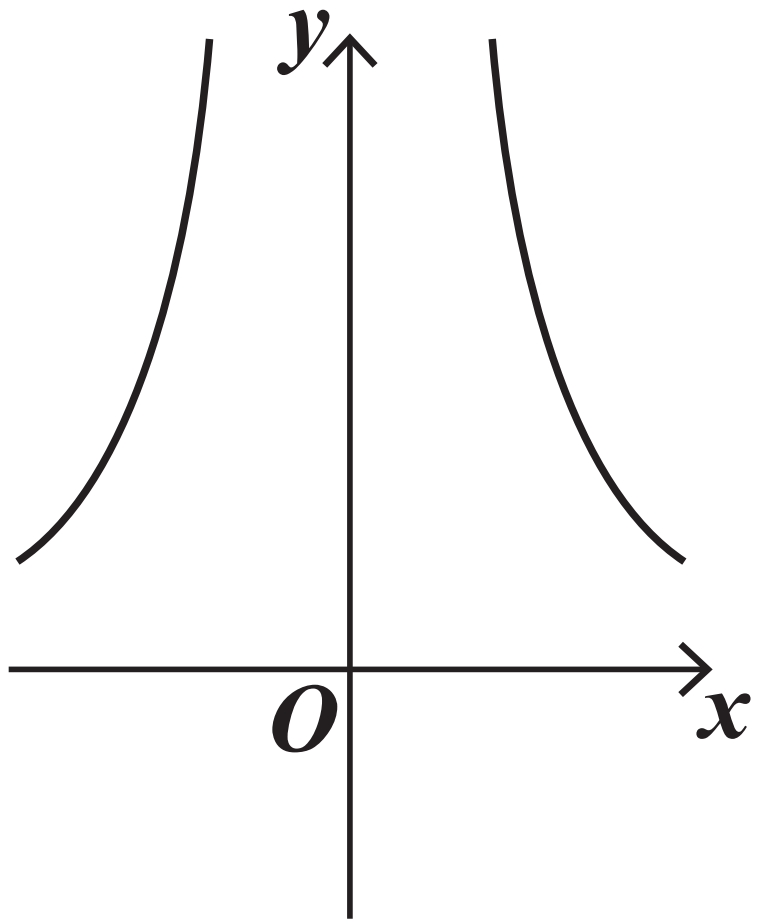
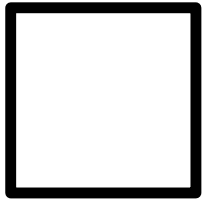
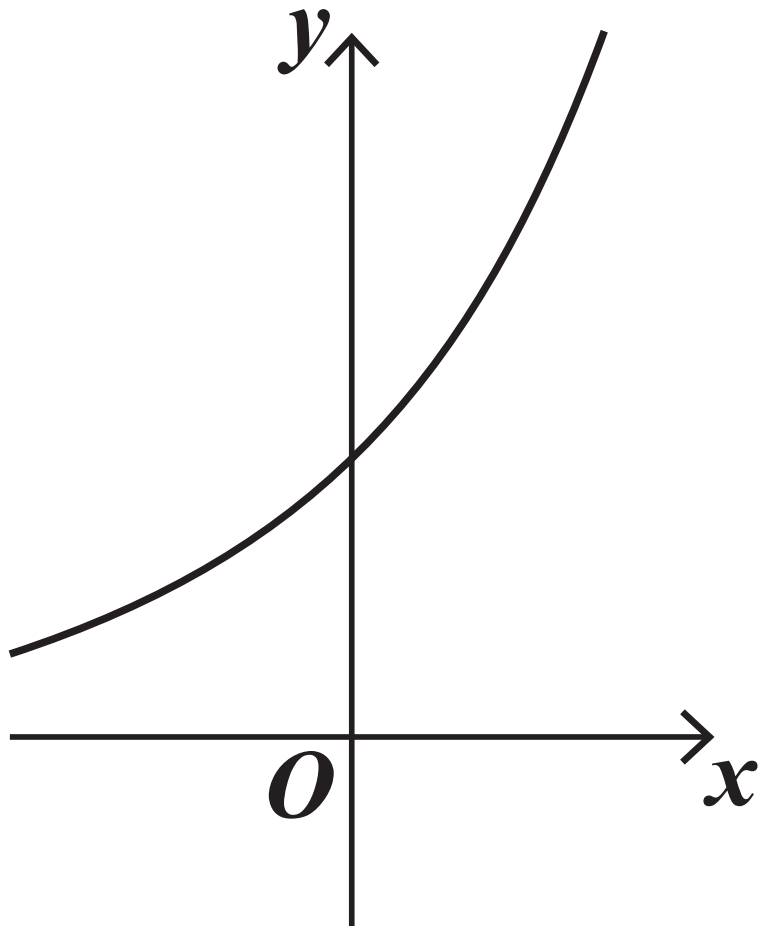
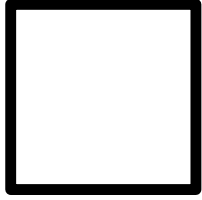


- 3 The function f is concave and is represented by one of the graphs below and opposite.

Identify the graph which represents f .

Tick (\checkmark) ONE box. [1 mark]



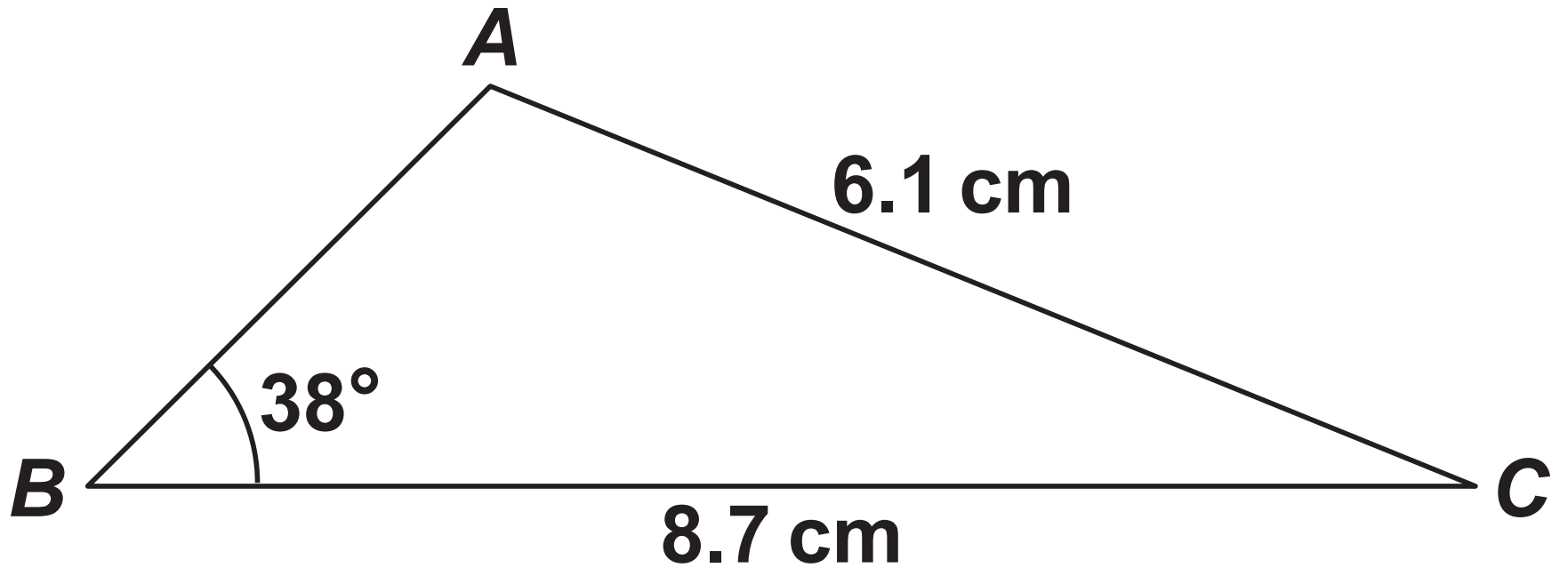


[Turn over]



4

8



The diagram shows a triangle *ABC*.

AB is the shortest side. The lengths of *AC* and *BC* are 6.1 cm and 8.7 cm respectively.

The size of angle *ABC* is 38°

Find the size of the largest angle.

Give your answer to the nearest degree. [3 marks]





BLANK PAGE

[Turn over]



5 The binomial expansion of $(2 + 5x)^4$ is given by

$$(2 + 5x)^4 =$$

$$A + 160x + Bx^2 + 1000x^3 + 625x^4$$

5 (a) Find the value of A and the value of B . [2 marks]



5(b) Show that

$$(2 + 5x)^4 - (2 - 5x)^4 = Cx + Dx^3$$

where C and D are constants to be found. [2 marks]

[Turn over]





5 (c) Hence, or otherwise, find

$$\int \left((2 + 5x)^4 - (2 - 5x)^4 \right) dx$$

[2 marks]

[Turn over]



6 (a) Asif notices that $24^2 = 576$ and $2 + 4 = 6$ gives the last digit of 576

He checks two more examples:

$$27^2 = 729$$

$$29^2 = 841$$

$$2 + 7 = 9$$

$$2 + 9 = 11$$

Last digit 9

Last digit 1

Asif concludes that he can find the last digit of any square number greater than 100 by adding the digits of the number being squared.

Give a counter example to show that Asif's conclusion is NOT correct. [2 marks]

[Turn over]



6(b) Claire tells Asif that he should look only at the last digit of the number being squared.

$$27^2 = 729$$

$$24^2 = 576$$

$$7^2 = 49$$

$$4^2 = 16$$

Last digit 9

Last digit 6

Using Claire's method determine the last digit of 23456789^2

[1 mark]

[Turn over]



6 (c) Given Claire's method is correct, use proof by exhaustion to show that no square number has a last digit of 8 [2 marks]

[Turn over]

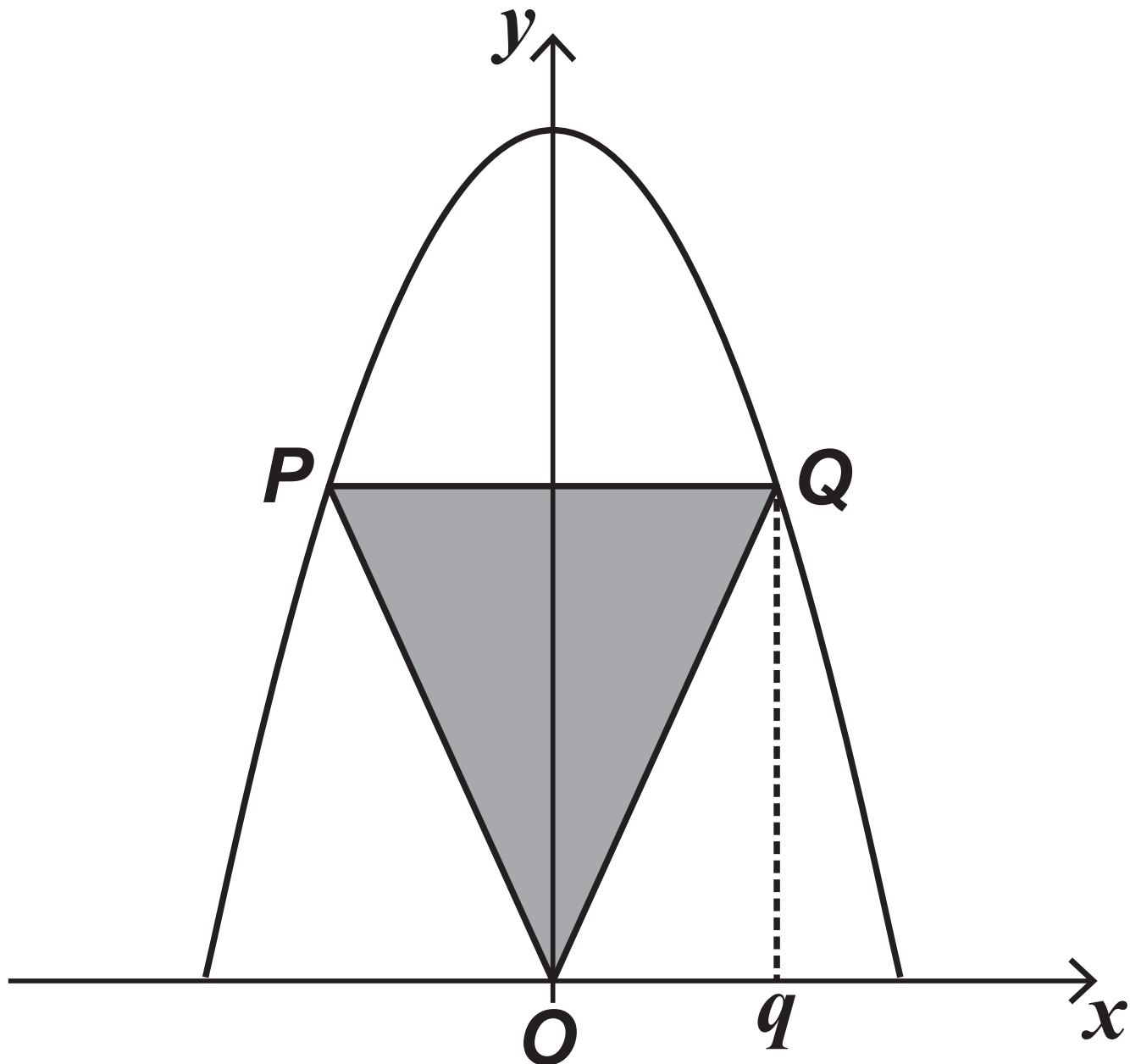


BLANK PAGE

[Turn over]



- 7 The curve $y = 15 - x^2$ and the isosceles triangle OPQ are shown on the diagram below.



Vertices P and Q lie on the curve such that Q lies vertically above some point $(q, 0)$

The line PQ is parallel to the x -axis.



7 (a) Show that the area, A , of the triangle OPQ is given by

$$A = 15q - q^3 \quad \text{for } 0 < q < c$$

where c is a constant to be found.
[3 marks]

[Turn over]





7 (b) Find the exact maximum area of triangle OPQ .

Fully justify your answer.
[6 marks]

[Turn over]

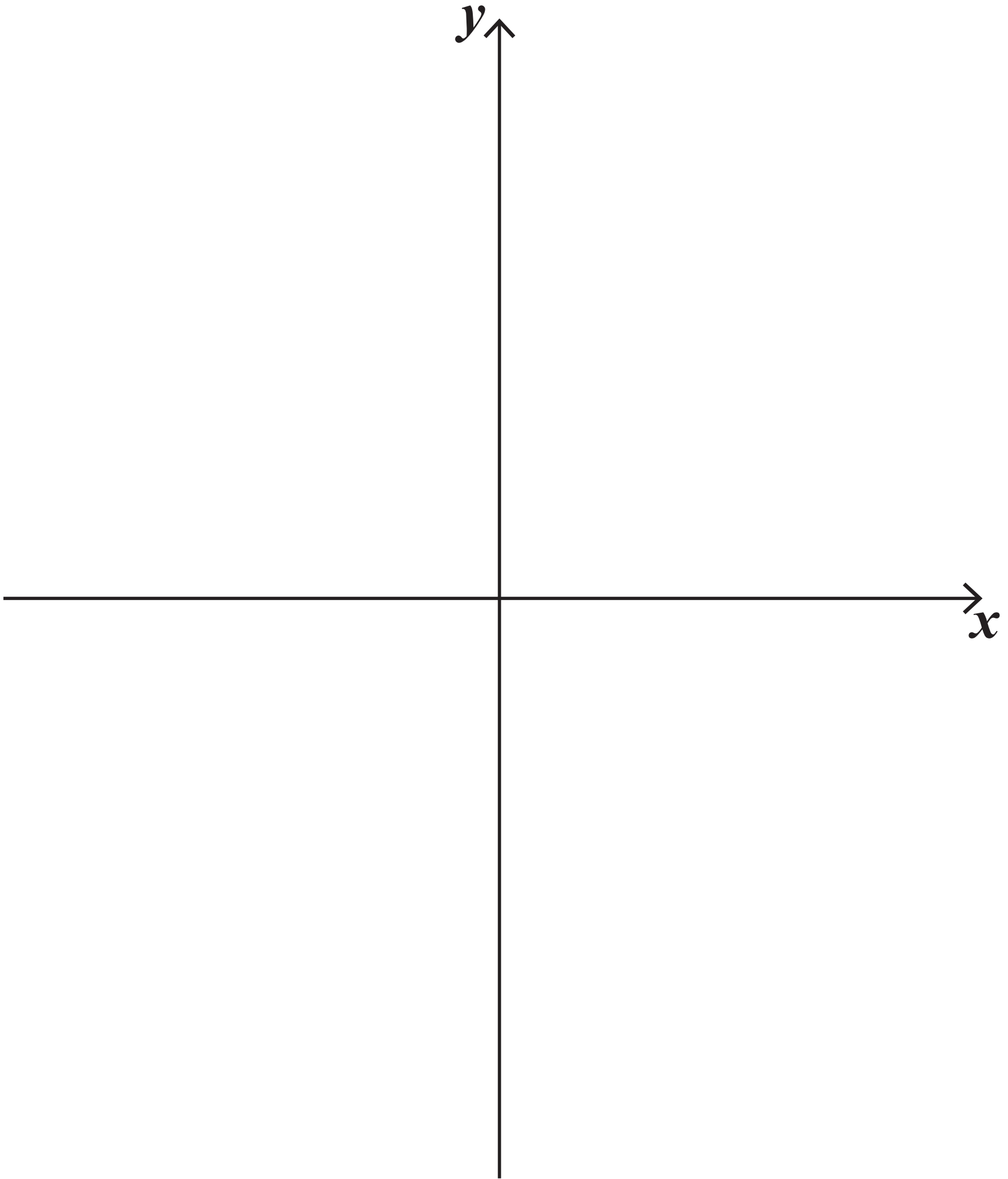




[Turn over]



8 (a) Sketch the graph of $y = \frac{1}{x^2}$
[2 marks]



8(b) The graph of $y = \frac{1}{x^2}$ can be transformed onto the graph of $y = \frac{9}{x^2}$ using a stretch in one direction.

Beth thinks the stretch should be in the y -direction.

Paul thinks the stretch should be in the x -direction.

State, giving reasons for your answer, whether Beth is correct, Paul is correct, both are correct or neither is correct. [3 marks]

[Turn over]



[Turn over]



9 Given that

$$\log_2 x^3 - \log_2 y^2 = 9$$

show that

$$x = Ay^p$$

where A is an integer and p is a rational number. [4 marks]

[Turn over]



10 A gardener has a greenhouse containing 900 tomato plants.

The gardener notices that some of the tomato plants are damaged by insects.

Initially there are 25 damaged tomato plants.

The number of tomato plants damaged by insects is increasing by 32% each day.

10 (a) The total number of plants damaged by insects, x , is modelled by

$$x = A \times B^t$$

where A and B are constants and t is the number of days after the gardener first noticed the damaged plants.

**10 (a) (i) Use this model to find the total number of plants damaged by insects 5 days after the gardener noticed the damaged plants.
[3 marks]**

[Turn over]





**10 (a) (ii) Explain why this model is not realistic in the long term.
[2 marks]**

[Turn over]



- 10 (b)** A refined model assumes the rate of increase of the number of plants damaged by insects is given by

$$\frac{dx}{dt} = \frac{x(900 - x)}{2700}$$

- 10 (b) (i)** Show that

$$\int \left(\frac{A}{x} + \frac{B}{900 - x} \right) dx = \int dt$$

where A and B are positive integers to be found. [3 marks]



**10 (b) (ii) Hence, find t in terms of x .
[5 marks]**

[Turn over]



10 (b) (iii) Hence, find the number of days it takes from when the damage is first noticed until half of the plants are damaged by the insects. [2 marks]

[Turn over]



SECTION B

Answer ALL questions in the spaces provided.

11 A moon vehicle has a mass of 212 kg and a length of 3 metres.

On the moon the vehicle has a weight of 345 N

Calculate a value for acceleration due to gravity on the moon.

Circle your answer. [1 mark]

0.614 m s^{-2}

1.63 m s^{-2}

1.84 m s^{-2}

4.89 m s^{-2}



12 A car is travelling along a straight horizontal road with initial velocity $u \text{ m s}^{-1}$

The car begins to accelerate at a constant rate $a \text{ m s}^{-2}$ for 5 seconds, to reach a final velocity of $4u \text{ m s}^{-1}$

Express a in terms of u .

Circle your answer. [1 mark]

$$a = 0.2u$$

$$a = 0.4u$$

$$a = 0.6u$$

$$a = 0.8u$$

[Turn over]



13

IN THIS QUESTION USE

$$g = 9.8 \text{ m s}^{-2}$$

A ball is projected from a point on horizontal ground with an initial velocity of 7 m s^{-1} at an angle θ above the horizontal.

The ball reaches a maximum vertical height of h metres above the ground.

13 (a) Show that

$$h = 2.5 \sin^2 \theta$$

[3 marks]



[Turn over]



- 13(b) Hence, given that $0^\circ \leq \theta \leq 60^\circ$,
find the maximum value of h .
[2 marks]

13 (c) Nisha claims that the larger the size of the ball, the greater the maximum vertical height will be.

**State whether Nisha is correct, giving a reason for your answer.
[1 mark]**

[Turn over]

14 A £2 coin has a diameter of 28 mm and a mass of 12 grams.

A uniform rod AB of length 160 mm and a fixed load of mass m grams are used to check that a £2 coin has the correct mass.

The rod rests with its midpoint on a support.

A £2 coin is placed face down on the rod with part of its curved edge directly above A .

The fixed load is hung by a light inextensible string from a point directly below the other end of the rod at B , as shown in the diagram.



14(b)

State an assumption you have made about the £2 coin to answer PART (a). [1 mark]

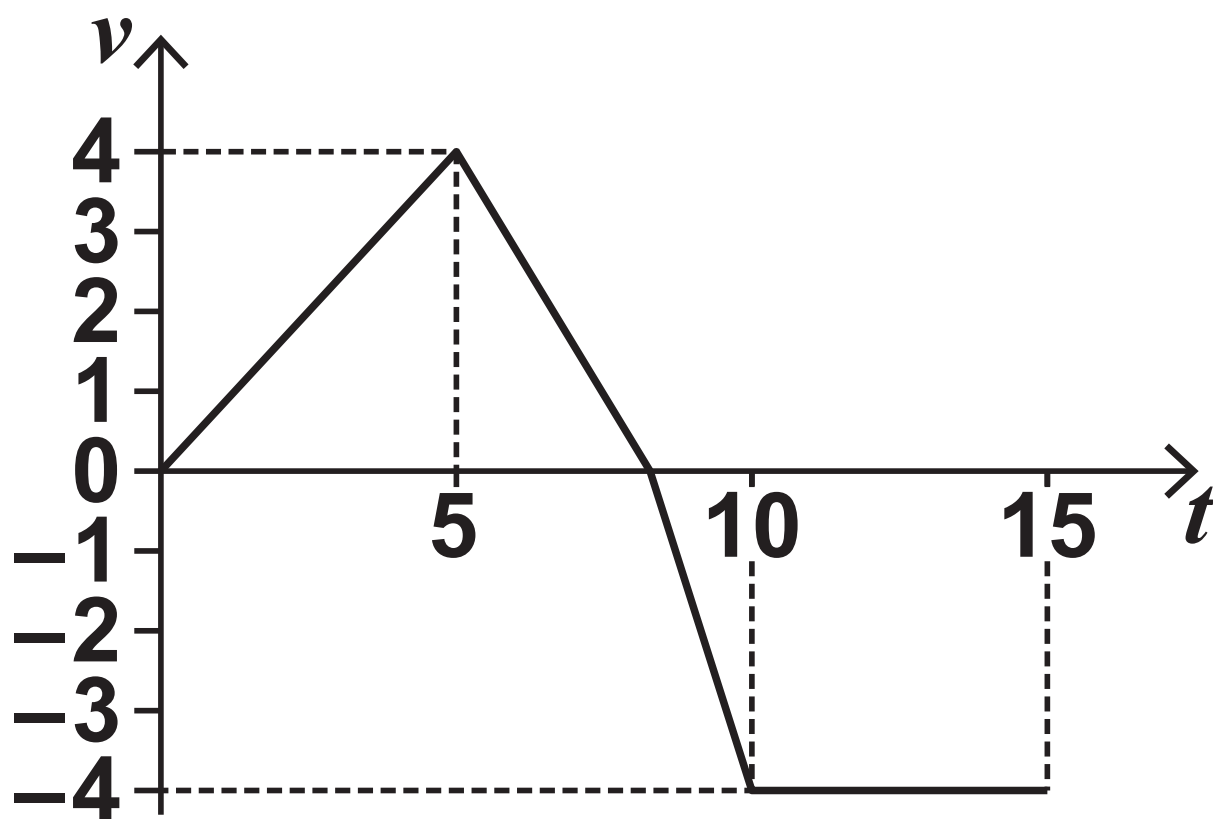
BLANK PAGE

[Turn over]



15 A car is moving in a straight line along a horizontal road.

The graph below shows how the car's velocity $v \text{ m s}^{-1}$ changes with time, t seconds.



Over the period $0 \leq t \leq 15$ the car has a total displacement of -7 metres.

Initially the car has velocity 0 m s^{-1}

Find the next time when the velocity of the car is 0 m s^{-1}
[4 marks]



BLANK PAGE

[Turn over]



16 Two particles, P and Q , move in the same horizontal plane.

Particle P is initially at rest at the point with position vector $(-4\mathbf{i} + 5\mathbf{j})$ metres and moves with constant acceleration $(3\mathbf{i} - 4\mathbf{j}) \text{ m s}^{-2}$

Particle Q moves in a straight line, passing through the points with position vectors $(\mathbf{i} - \mathbf{j})$ metres and $(10\mathbf{i} + c\mathbf{j})$ metres.

P and Q are moving along parallel paths.

16 (a) Show that $c = -13$ [4 marks]

[Turn over]



16(b) (i) Find an expression for the position vector of P at time t seconds. [1 mark]

16 (b) (ii) Hence, prove that the paths of P and Q are not collinear.
[3 marks]

[Turn over]





BLANK PAGE

[Turn over]



17 A particle is moving such that its position vector, r metres, at time t seconds, is given by

$$r = e^t \cos t \mathbf{i} + e^t \sin t \mathbf{j}$$

Show that the **MAGNITUDE** of the acceleration of the particle, $a \text{ m s}^{-2}$, is given by

$$a = 2e^t$$

Fully justify your answer.
[7 marks]

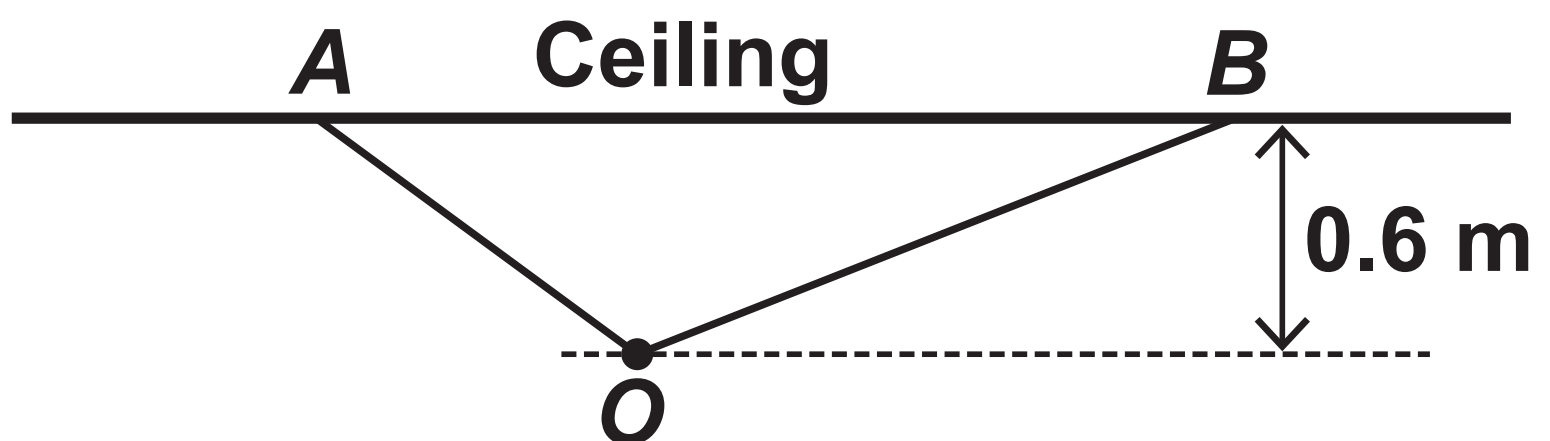


BLANK PAGE

[Turn over]



- 18 An object, O , of mass m kilograms is hanging from a ceiling by two light, inelastic strings of different lengths.
- The shorter string, of length 0.8 metres, is fixed to the ceiling at A .
- The longer string, of length 1.2 metres, is fixed to the ceiling at B .
- This object hangs 0.6 metres directly below the ceiling as shown in the diagram.



18(b) The tension in the longer string is known to be $2g$ newtons.

Find the value of m . [4 marks]

[Turn over]



BLANK PAGE

[Turn over]



19

IN THIS QUESTION USE

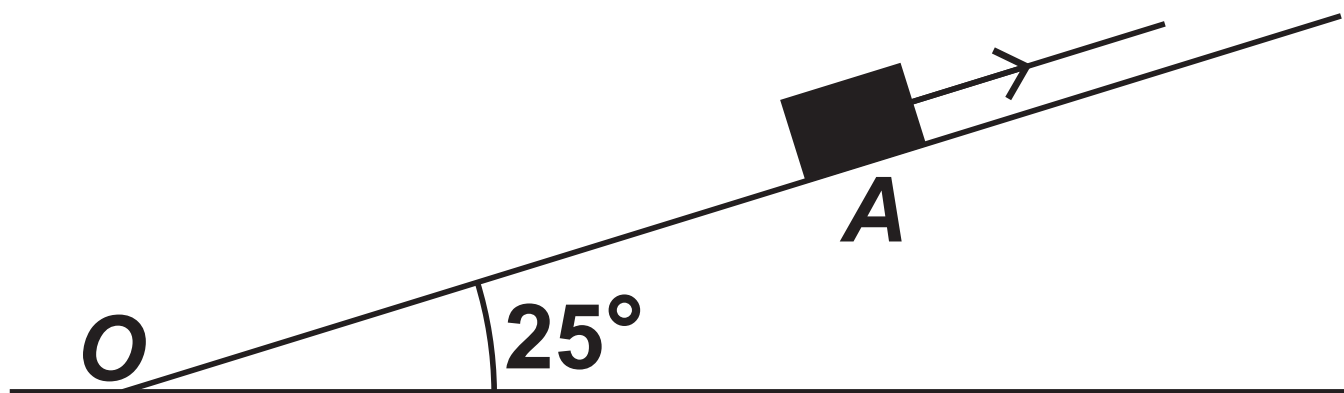
$$g = 9.8 \text{ m s}^{-2}$$

A rough wooden ramp is 10 metres long and is inclined at an angle of 25° above the horizontal. The bottom of the ramp is at the point O .

A crate of mass 20 kg is at rest at the point A on the ramp.

The crate is pulled up the ramp using a rope attached to the crate.

Once in motion, the rope remains taut and parallel to the line of greatest slope of the ramp.



19 (a) The tension in the rope is 230 N

**The crate accelerates up the ramp
at 1.2 m s^{-2}**

**Find the coefficient of friction
between the crate and the ramp.
[7 marks]**

[Turn over]



[Turn over]



19(b) (i) The crate takes 3.8 seconds to reach the top of the ramp.

Find the distance OA . [3 marks]

19 (b) (ii) Other than air resistance, state ONE assumption you have made about the crate in answering part (b)(i). [1 mark]

END OF QUESTIONS



BLANK PAGE



Additional page, if required. Write the question numbers in the left-hand margin.

Additional page, if required. Write the question numbers in the left-hand margin.

BLANK PAGE

For Examiner's Use	
Question	Mark
1	
2	
3	
4	
5	
6	
7	
8	
9	
10	
11	
12	
13	
14	
15	
16	
17	
18	
19	
TOTAL	

Copyright information

For confidentiality purposes, all acknowledgements of third-party copyright material are published in a separate booklet. This booklet is published after each live examination series and is available for free download from www.aqa.org.uk.

Permission to reproduce all copyright material has been applied for. In some cases, efforts to contact copyright-holders may have been unsuccessful and AQA will be happy to rectify any omissions of acknowledgements. If you have any queries please contact the Copyright Team.

Copyright © 2022 AQA and its licensors. All rights reserved.

GB/VW/Jun22/7357/2/E1