

A



**Surname** \_\_\_\_\_

**Other Names** \_\_\_\_\_

**Centre Number** \_\_\_\_\_

**Candidate Number** \_\_\_\_\_

**Candidate Signature** \_\_\_\_\_

**I declare this is my own work.**

**A-level**

**BIOLOGY**

**Paper 3**

**7402/3**

**Time allowed: 2 hours**

**At the top of the page, write your surname and other names, your centre number, your candidate number and add your signature.**

**[Turn over]**



JUN 22 7402301

**BLANK PAGE**



**For this paper you must have:**

- a ruler with millimetre measurements
- a scientific calculator.

## **INSTRUCTIONS**

- Use black ink or black ball-point pen.
- Answer ALL questions in SECTION A.
- Answer ONE question from SECTION B.
- You must answer the questions in the spaces provided. Do not write on blank pages.
- If you need extra space for your answer(s), use the lined pages at the end of this book. Write the question number against your answer(s).
- Show all your working.
- Do all rough work in this book. Cross through any work you do not want to be marked.

## **INFORMATION**

- The marks for the questions are shown in brackets.
- The maximum mark for this paper is 78.

**DO NOT TURN OVER UNTIL TOLD TO DO SO**



**SECTION A**

Answer ALL questions in this section.

You are advised to spend no more than 1 hour and 15 minutes on this section.

|   |   |
|---|---|
| 0 | 1 |
|---|---|

Amino acids are used to make proteins. TABLE 1 shows the R groups of six different amino acids.

**TABLE 1**

| Amino acid    | R group                           |
|---------------|-----------------------------------|
| Alanine       | CH <sub>3</sub>                   |
| Asparagine    | CH <sub>2</sub> CONH <sub>2</sub> |
| Aspartic acid | CH <sub>2</sub> COOH              |

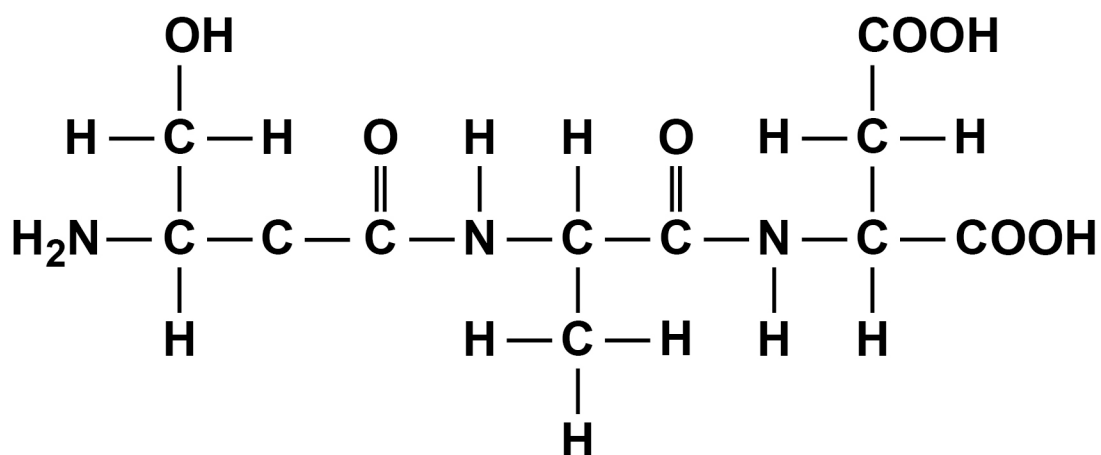
| Amino acid    | R group                              |
|---------------|--------------------------------------|
| Glutamic acid | CH <sub>2</sub> CH <sub>2</sub> COOH |
| Glycine       | H                                    |
| Serine        | CH <sub>2</sub> OH                   |



01.1

Use TABLE 1, on the opposite page, to identify the **THREE** different amino acids used to make the polypeptide shown in FIGURE 1. [2 marks]

FIGURE 1



Left amino acid \_\_\_\_\_

\_\_\_\_\_

Middle amino acid \_\_\_\_\_

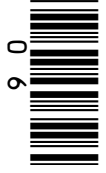
\_\_\_\_\_

Right amino acid \_\_\_\_\_

\_\_\_\_\_

[Turn over]





**BLANK PAGE**



0 1 . 2

**TABLE 2** shows three statements and names of four biological molecules.

Put a tick (✓) in each box where the statement is true for the biological molecule.  
[3 marks]

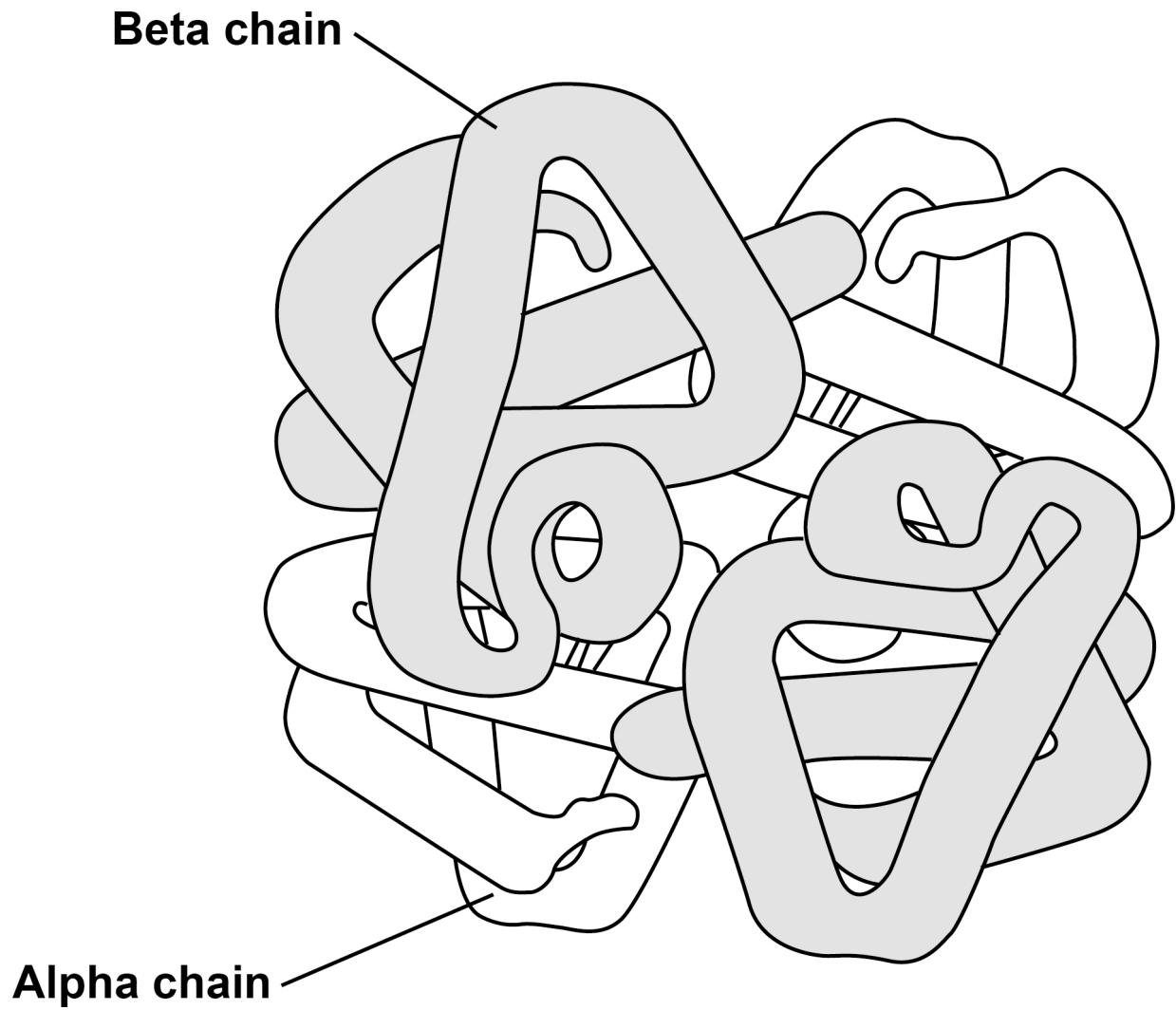
**TABLE 2**

| Statement                               | DNA | ATP | Reverse transcriptase | Phospholipid |
|---|-----|-----|-----------------------|--------------|
| Contains peptide bonds                  |     |     |                       |              |
| Is formed using a condensation reaction |     |     |                       |              |
| Is a polymer                            |     |     |                       |              |

[Turn over]

**FIGURE 2** represents the structure of adult human haemoglobin.

**FIGURE 2**





|   |   |   |   |
|---|---|---|---|
| 0 | 1 | . | 3 |
|---|---|---|---|

The number of amino acids in the beta chains in FIGURE 2 is 3.546% greater than in the alpha chains. Each alpha chain contains 141 amino acids.

Calculate how many amino acids there are in total in the haemoglobin molecule shown in FIGURE 2. Give your answer to the nearest whole number. [2 marks]

Answer \_\_\_\_\_ amino acids

[Turn over]



**When a substance called BPG binds to haemoglobin, it reduces the affinity of haemoglobin for oxygen.**

**0 1 . 4**

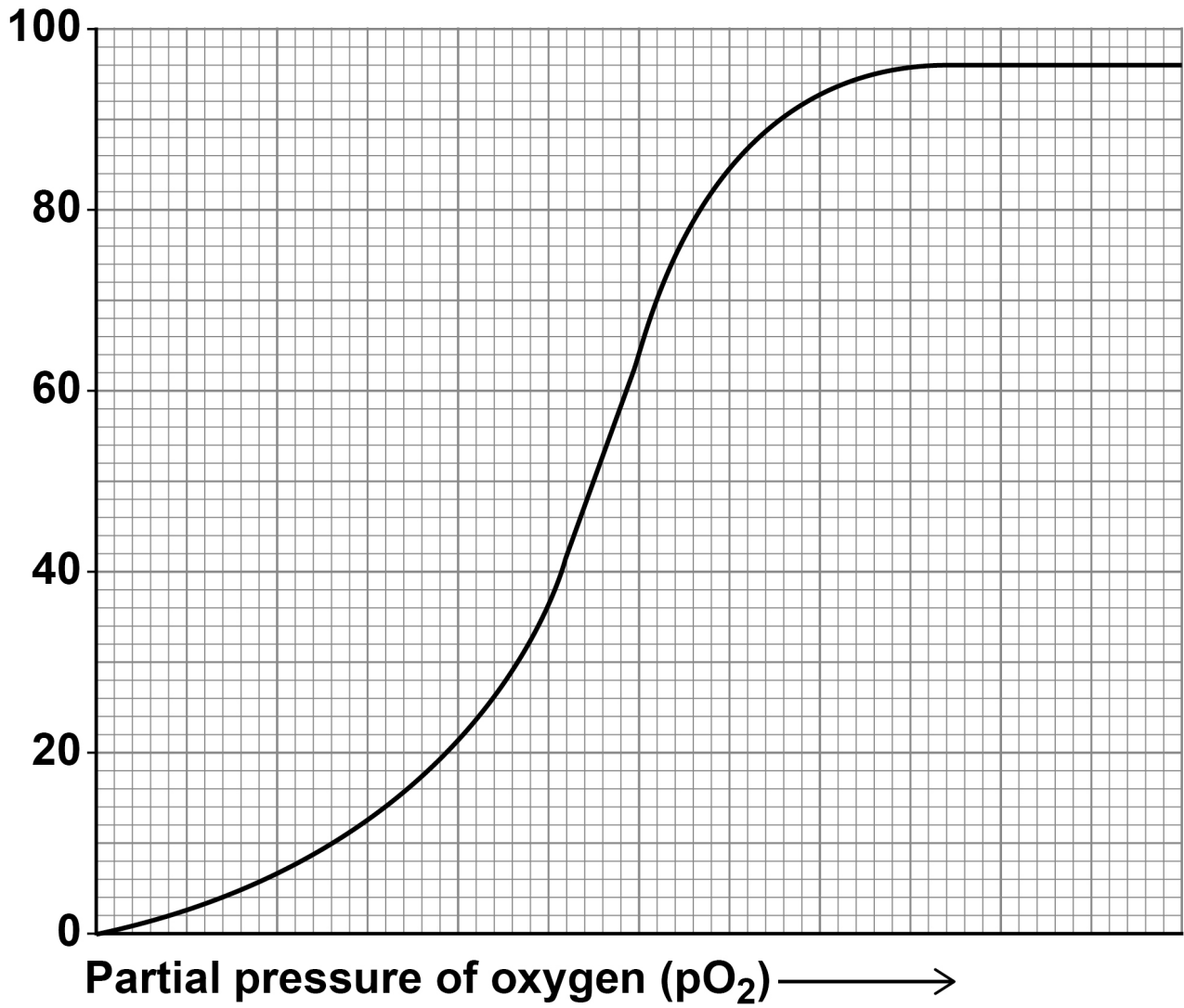
**FIGURE 3, on the opposite page, shows an oxyhaemoglobin dissociation curve for haemoglobin in normal conditions.**

**Sketch a curve on FIGURE 3 to show the oxyhaemoglobin dissociation curve for haemoglobin when BPG binds to it. [1 mark]**



**FIGURE 3**

**Percentage saturation of  
haemoglobin with oxygen**



**[Turn over]**



0 1 . 5

**Suggest and explain when it would be an advantage to a human for BPG to bind to haemoglobin. [2 marks]**

---

---

---

---

---

---

---

---

---

---

---

---

---

---

---

---

---

---

---

---

---

---

---

|    |
|----|
|    |
| 10 |



**BLANK PAGE**

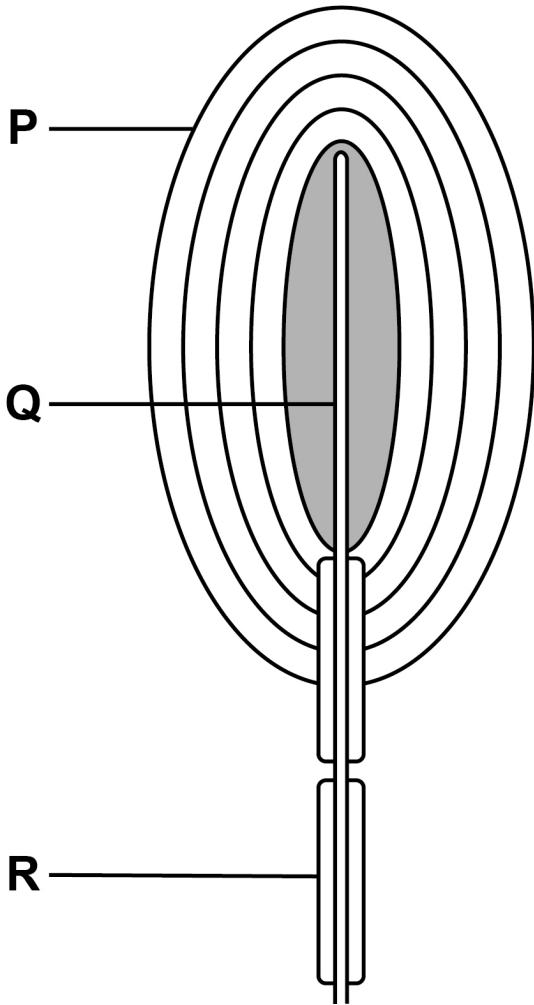
**[Turn over]**



02

FIGURE 4 shows a diagram of a Pacinian corpuscle.

FIGURE 4



|   |   |   |   |
|---|---|---|---|
| 0 | 2 | . | 1 |
|---|---|---|---|

Name the structures labelled P, Q and R shown in FIGURE 4, on the opposite page. [2 marks]

P

---

Q

---

R

---

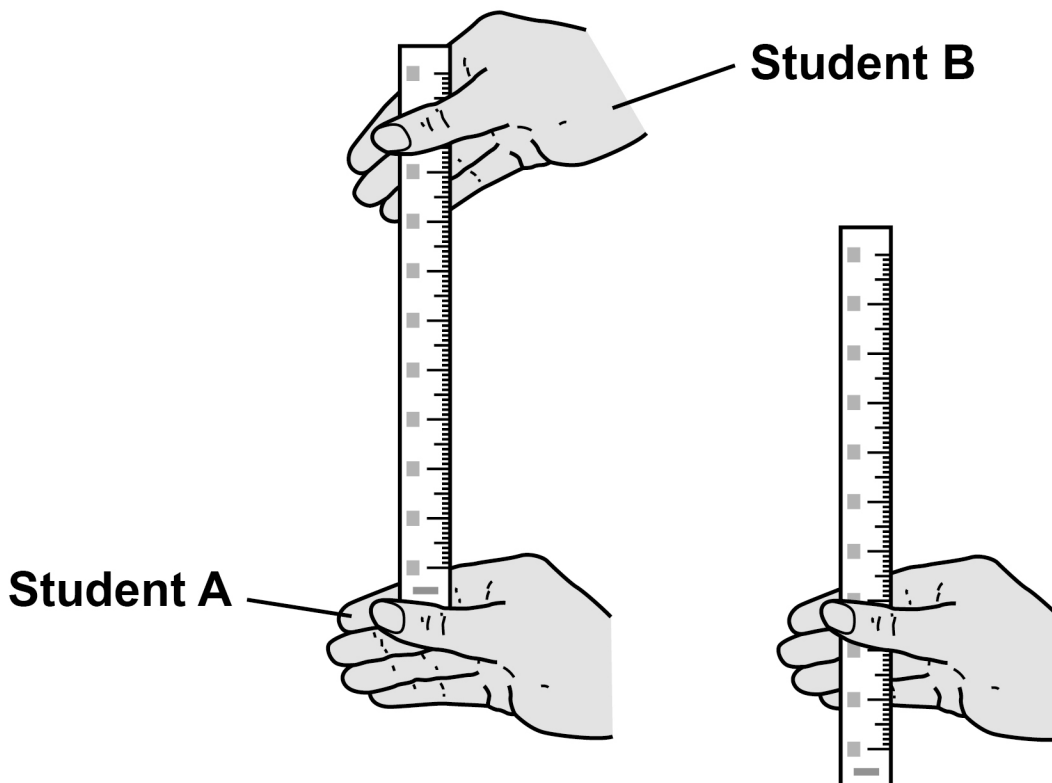
[Turn over]



Two students (A and B) investigated reaction time in response to touch.

- Student A sat with her eyes shut and her forearm resting on a worktop so that her hand was over the edge.
- Student B held a ruler vertically between student A's thumb and first finger, with the ruler at 0 mm lightly touching student A's first finger.
- Student B released the ruler.
- As soon as student A felt the ruler fall, she closed her thumb and first finger to catch the ruler as shown in FIGURE 5.
- Student B measured the distance the ruler had fallen to the nearest mm

FIGURE 5





The test was repeated three more times using the same hand to catch the ruler.

TABLE 3 shows student A's results.

**TABLE 3**

| <b>Trial</b> | <b>Distance the ruler has fallen / mm</b> |
|--------------|---|
| <b>1</b>     | <b>79</b>                                 |
| <b>2</b>     | <b>97</b>                                 |
| <b>3</b>     | <b>10</b>                                 |
| <b>4</b>     | <b>94</b>                                 |

The student was able to convert these distances into reaction times using TABLE 4.

**TABLE 4**

| <b>Distance the ruler fell / mm</b> | <b>Reaction time / ms</b> |
|-------------------------------------|---------------------------|
| <b>10</b>                           | <b>45</b>                 |
| <b>20</b>                           | <b>64</b>                 |
| <b>30</b>                           | <b>78</b>                 |
| <b>40</b>                           | <b>90</b>                 |
| <b>50</b>                           | <b>101</b>                |
| <b>60</b>                           | <b>111</b>                |
| <b>70</b>                           | <b>120</b>                |
| <b>80</b>                           | <b>128</b>                |
| <b>90</b>                           | <b>136</b>                |

**[Turn over]**



**BLANK PAGE**



**0 2 . 2**

**Calculate the percentage uncertainty in the measurement of TRIAL 1 in TABLE 3, on page 17.**

**Put a tick (✓) in the correct box below. [1 mark]**

**0.633%****1.27%****2.53%****12.6%**

**[Turn over]**



|   |   |   |   |
|---|---|---|---|
| 0 | 2 | . | 3 |
|---|---|---|---|

In this investigation, it is not possible for a student to react in less than 45 ms

Suggest ONE explanation for the value recorded in TRIAL 3 in TABLE 3, on page 17. [1 mark]

---

---

---

---



|   |   |   |   |
|---|---|---|---|
| 0 | 2 | . | 4 |
|---|---|---|---|

**Student A estimated that the length of the nerve pathway involved was 175 cm**

**Use TABLE 3 and TABLE 4, on page 17, to calculate the mean speed of nerve impulse transmission.**

**Do NOT use the value for TRIAL 3 in your calculation.  
[2 marks]**

**Answer \_\_\_\_\_ m s<sup>-1</sup>**

**[Turn over]**



|   |   |   |   |
|---|---|---|---|
| 0 | 2 | . | 5 |
|---|---|---|---|

In response to touch, nerve impulses can be transmitted at speeds of  $76.2 \text{ m s}^{-1}$

Suggest **THREE** reasons why, in this investigation, the estimated speed of student A's impulse transmission was less than  $76.2 \text{ m s}^{-1}$  [3 marks]

1

---

---

---

---

2

---

---

---

---

3

---

---

---



**BLANK PAGE**

**[Turn over]**



**03**

**A student prepared a stained squash of cells from the root tips of garlic to calculate a mitotic index. He:**

- 1. cut the end 5 mm from 10 garlic roots**
- 2. placed the root tips into a Petri dish containing 5 cm<sup>3</sup> of hydrochloric acid for 12 minutes**
- 3. rinsed the root tips in distilled water**
- 4. placed one of the root tips on a microscope slide and added toluidine blue stain**
- 5. placed a coverslip onto the microscope slide, and gently pressed the coverslip downwards on the root tip**
- 6. observed the root tip using an optical microscope.**

**03.1**

**Suggest why the student soaked the root tips in hydrochloric acid in step 2. [2 marks]**

---

---

---

---

---

---





---

---

---

---

---

---

---

---

---

---

**[Turn over]**



0 3 . 2

**Pressing the coverslip downwards enabled the student to observe the stages of mitosis clearly.**

**Explain why. [2 marks]**

---

---

---

---

---

---

---

---

---

---

---

---

---

---

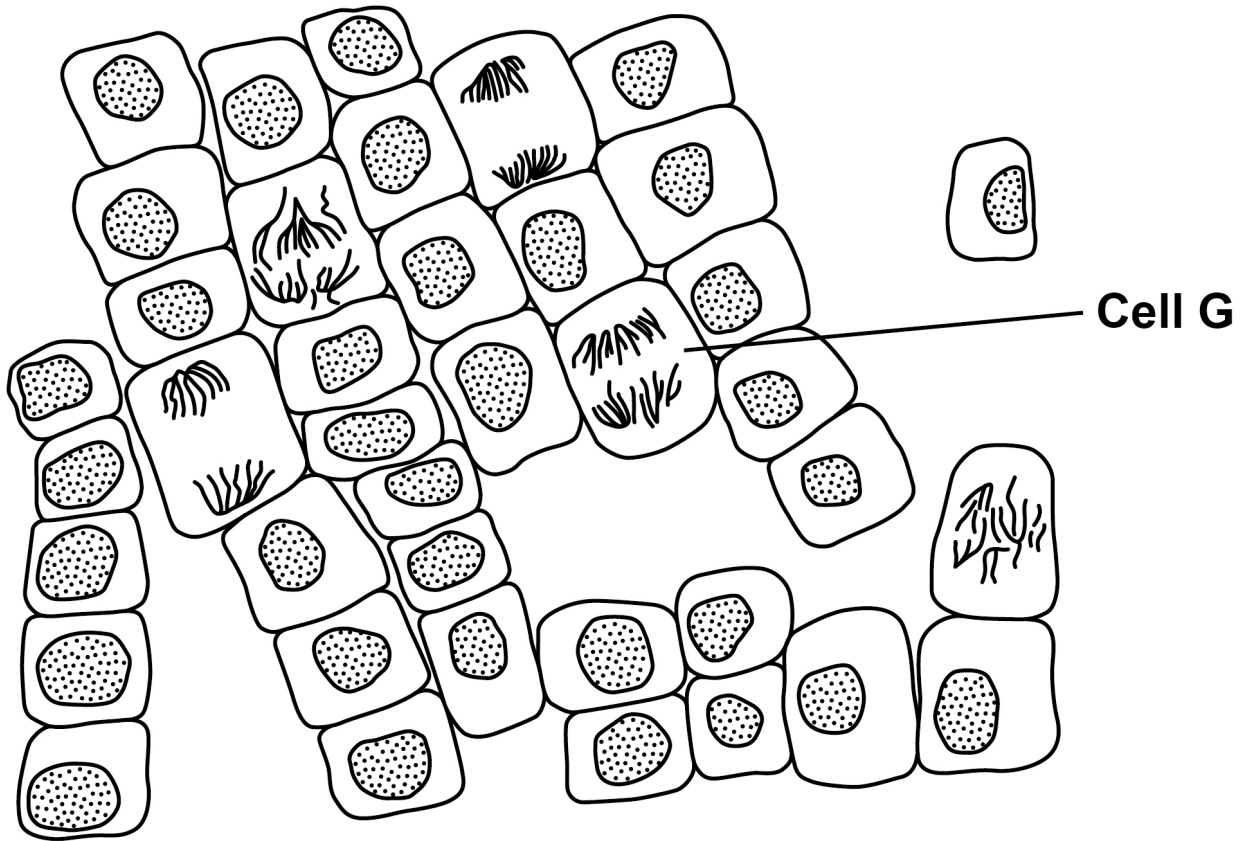
**BLANK PAGE**

**[Turn over]**



**FIGURE 6** shows the student's drawing of one field of view.

**FIGURE 6**



03.3

Name the stage of mitosis shown in cell G. Explain the appearance of this cell. [2 marks]

Stage of mitosis \_\_\_\_\_

Explanation \_\_\_\_\_

---

---

---

---

---

---

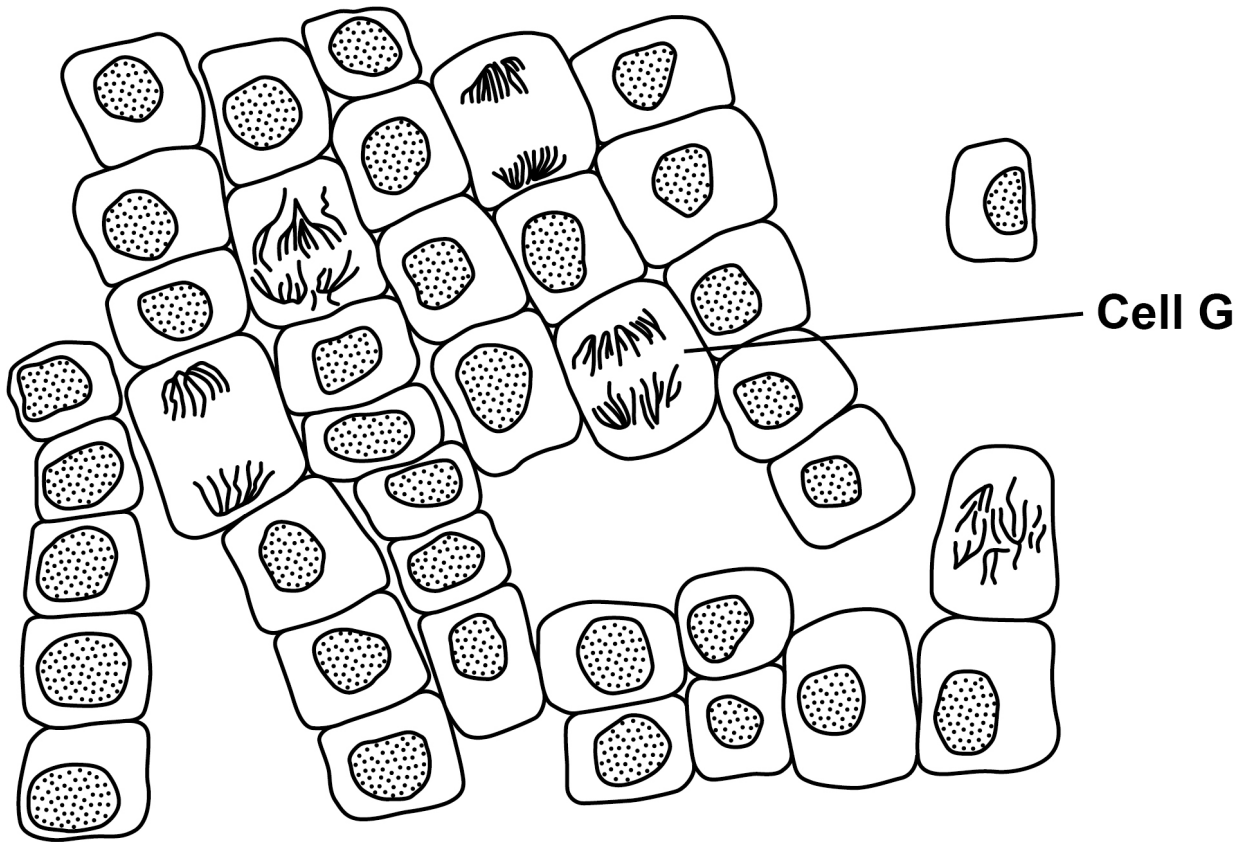
---

---

[Turn over]



## REPEAT OF FIGURE 6



03.4

Use FIGURE 6 to calculate a mitotic index for the cells in this field of view. [1 mark]

Mitotic index \_\_\_\_\_



**03.5**

**Other students in the class followed the same method, but calculated different mitotic indices.**

**Apart from student errors, suggest TWO explanations why. [2 marks]**

**1**

---

---

---

---

**2**

---

---

---

---

**[Turn over]**

|   |
|---|
|   |
| 9 |



04.1

Complete the following definitions. [2 marks]

The genome is \_\_\_\_\_

\_\_\_\_\_

\_\_\_\_\_

\_\_\_\_\_

The proteome is \_\_\_\_\_

\_\_\_\_\_

\_\_\_\_\_

\_\_\_\_\_





Recombinant DNA technology can involve the transfer of fragments of human DNA into bacteria. The bacteria are then used to produce human proteins.

0 4 . 2

Give TWO reasons why bacteria are able to use human DNA to produce human proteins. [2 marks]

1 \_\_\_\_\_

\_\_\_\_\_

\_\_\_\_\_

\_\_\_\_\_

2 \_\_\_\_\_

\_\_\_\_\_

\_\_\_\_\_

\_\_\_\_\_

[Turn over]



04.3

**Suggest and explain ONE reason why bacteria might NOT be able to produce every human protein. [1 mark]**

---

---

---

---

---

---

---

---

---

---

---



**BLANK PAGE**

**[Turn over]**





**Antithrombin is a protein. Antithrombin prevents blood from clotting too much.**

**Some people have a deficiency of antithrombin in their blood, so they need to inject the protein.**

**Genetically modified goats are used to produce this protein. The human antithrombin gene is transferred into goat embryos. The adult goats then make human antithrombin protein.**

**FIGURE 7 shows an example of a DNA fragment that can be transferred into the cells of goats.**

**FIGURE 7**





04.4

The enhancer stimulates region M.

Name regions M and N shown in FIGURE 7, on the opposite page. [2 marks]

Region M \_\_\_\_\_

Region N \_\_\_\_\_

04.5

Explain the purpose of the marker gene. [1 mark]

---

---

[Turn over]

04.6

The enhancer only stimulates region M in the milk-producing glands of a goat.

Suggest TWO explanations for the importance of the enhancer being included in the DNA fragment transferred. [2 marks]

1

---

---

---

---

---

---

---

---

2

---

---

---

---

---

---

---

---



|   |   |
|---|---|
| 0 | 5 |
|---|---|

**Scientists investigated the effect of full sun and shade on the rate of photosynthesis in a species of shade-tolerant tree.**

**To estimate the rate of photosynthesis, the scientists measured uptake of carbon dioxide by trees in a forest. They measured uptake of carbon dioxide during two parts of the day:**

- **08.30 – 09.40 hours**
- **11.40 – 13.15 hours.**

**FIGURE 8, on page 40, shows the scientists' results.**

**[Turn over]**



**FIGURE 8**

**FIGURE 8 is not reproduced here due to third-party copyright restrictions**





|   |   |   |   |
|---|---|---|---|
| 0 | 5 | . | 1 |
|---|---|---|---|

Calculate the total uptake of carbon dioxide between 11.40 and 13.15 hours in trees exposed to full sun in a forest that is 12 000 m<sup>2</sup> in area.

Give your answer in standard form. Show your working. [3 marks]

Answer \_\_\_\_\_  $\mu\text{mol}$

[Turn over]



**0 5 . 2**

**FIGURE 8, on page 40, shows there is a small difference in the mean uptake of carbon dioxide between 08.30 and 09.40 hours by trees in full sun and by trees in the shade. When the scientists performed a statistical test on these data, they calculated  $P > 0.5$**

**State what this P value tells you about this difference.**

**Explain your answer using the words PROBABILITY and CHANCE. [2 marks]**

---

---

---

---

---

---

---

---

---

---

---

---

---

---

05.3

In this species of tree, very high light intensities can inhibit the release of electrons from chlorophyll.

Suggest how this could explain the results shown in FIGURE 8, on page 40, for 11.40 to 13.15 hours.

[4 marks]

---

---

---

---

---

---

---

---

---

---

---

---

---

---

---

---

---

---

---

---

---

---

---

---

---

---

---

---

---

---

[Turn over]



---

---

---

---

---

---

---

---

---

---

**Tomato plants grow best in high light intensities. To increase the yield of tomato plants, a farmer uses LED lightbulbs to provide additional light.**

**The increase in dry mass (D) produced when using additional light can be calculated using this equation.**

$$D = \frac{L}{0.4F}$$

**Where**

**L = light used in photosynthesis**

**F = GPP to NPP conversion factor for tomato plants**



TABLE 5 shows some of these values for LED lightbulbs.

TABLE 5

| L / MJ m <sup>-2</sup> h <sup>-1</sup> | F / MJ kg <sup>-1</sup> |
|--|-------------------------|
| $2.87 \times 10^{-2}$                  | 20                      |

0 5 . 4

Use the equation and TABLE 5 to calculate the increase in dry mass produced when using LED lightbulbs.

Give your answer in standard form AND give the units.  
[2 marks]

Answer \_\_\_\_\_

Units \_\_\_\_\_

[Turn over]



**05.5**

**Mature leaves from slow-growing, shade-tolerant plants produce poisonous chemicals that are a defence against being eaten by herbivores.**

**Suggest how this benefits slow-growing, shade-tolerant plants. [2 marks]**

---

---

---

---

---

---

---

---

---

---

---

---

---

---

---

---



**BLANK PAGE**

**[Turn over]**

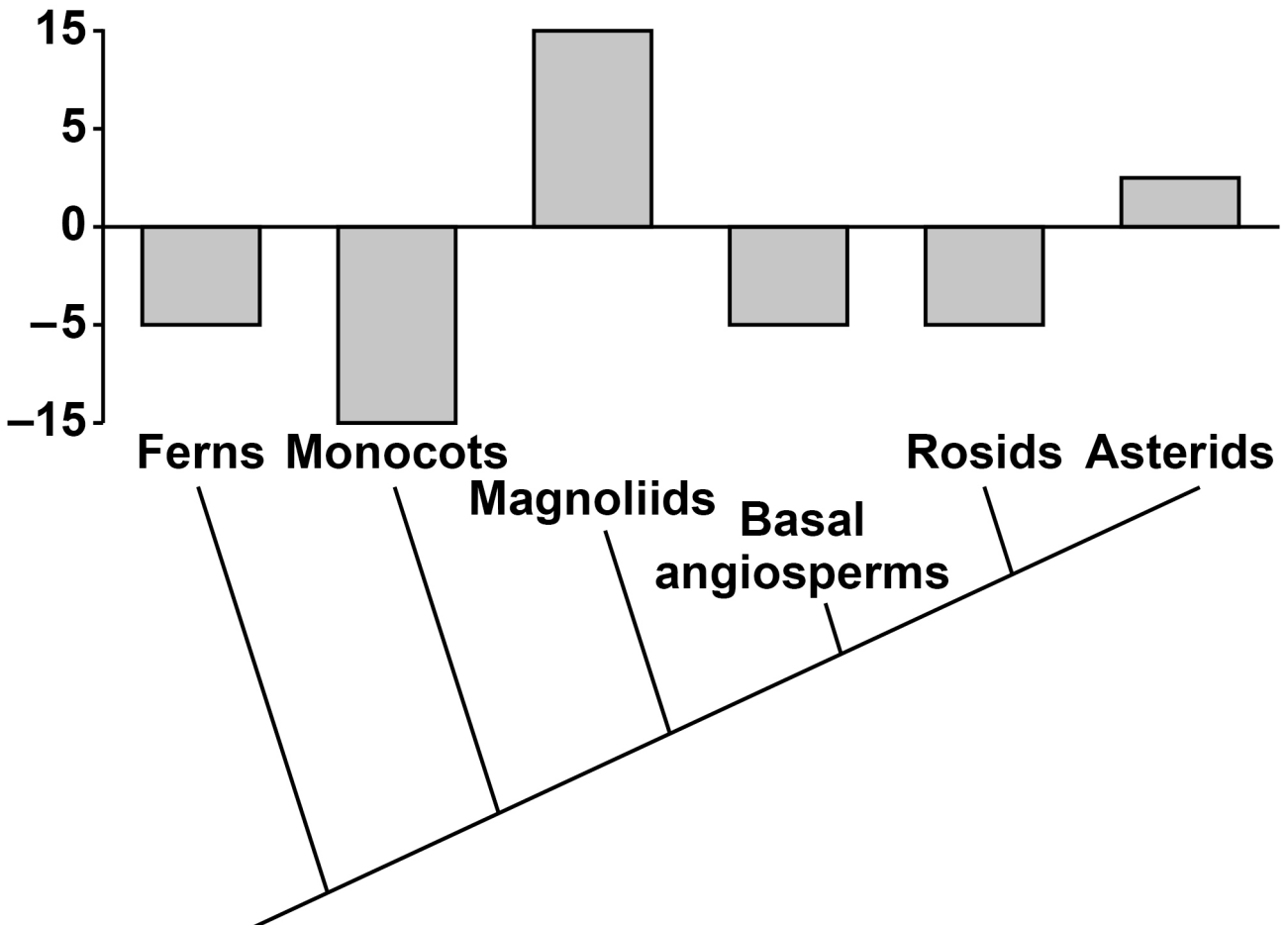


Scientists measured the concentration of poisonous chemicals produced by shade-tolerant plant species in six taxa. They compared this with the mean concentration of poisonous chemicals produced by all plants and the phylogenetic relationships between the six taxa.

FIGURE 9 shows the scientists' results.

### FIGURE 9

Concentration of poisonous chemicals produced compared with mean / arbitrary units





05.6

**A journalist published the following summary of these results.**

**‘The more recently a shade-tolerant plant species evolved, the greater the concentration of poisonous chemicals it produces.’**

**Do the data in FIGURE 9, on the opposite page, support this summary? Justify your answer. [2 marks]**

---

---

---

---

---

---

---

---

---

---

---

**[Turn over]**



---

---

---

---

---

|       |
|-------|
|       |
| <hr/> |
| 15    |



**BLANK PAGE**

**[Turn over]**



**SECTION B**

Answer **ONE** question.

You are advised to spend no more than **45 minutes** on this section.

**06**

Write an essay on **ONE** of the topics below.

**EITHER**

**06.1**

The uses and importance of **ATP** in organisms.  
[25 marks]

**OR**

**06.2**

The importance of cycles in biology. [25 marks]

---

---

---



---

---

---

---

---

---

---

---

---

---

---

---

---

---

---

---

---

---

---

---

---

---

---

---

**[Turn over]**





---

---

---

---

---

---

---

---

---

---

---

---

---

---

---

---

---

---

---

---

---

---

---

---

---

---

---

---

---

---

**[Turn over]**









---



---



---



---



---



---



---



---



---



---



---



---



---



---



---



---



---



---



---



---



---



---



---



---











---

---

---

---

---

---

---

---

---

---

---

---

---

---

---

---

---

---

---

---

---

---

---

---

---

---

---

---

---

---



















---

---

---

---

---

---

---

---

---

---

---

---

---

---

---

---

---

---

---

---

---

---

---









---

---

---

---

---

---

---

---

---

---

---

---

---

---

---

---

---

---

---

---

---

---

---

---

---

---

---

---

---

---

**[Turn over]**



---

---

---

---

---

---

---

---

---

---

---

---

---

---

---

---

---

---

---

---

---

---

---

---



---

---

---

---

---

---

---

---

---

---

---

---

---

---

---

---

---

---

---

---

---

---

---

---

---

---

---

---

---

---

**[Turn over]**







---

---

---

---

---

---

---

---

---

---

---

---

---

---

---

---

---

---

---

---

---

---

---

---













**BLANK PAGE**

| For Examiner's Use |      |
|--------------------|------|
| Question           | Mark |
| 1                  |      |
| 2                  |      |
| 3                  |      |
| 4                  |      |
| 5                  |      |
| 6                  |      |
| <b>TOTAL</b>       |      |

**Copyright information**

For confidentiality purposes, all acknowledgements of third-party copyright material are published in a separate booklet. This booklet is published after each live examination series and is available for free download from [www.aqa.org.uk](http://www.aqa.org.uk).

Permission to reproduce all copyright material has been applied for. In some cases, efforts to contact copyright-holders may have been unsuccessful and AQA will be happy to rectify any omissions of acknowledgements. If you have any queries please contact the Copyright Team.

Copyright © 2022 AQA and its licensors. All rights reserved.

**IB/M/CD/Jun22/7402/3/E2**