

A



GCSE

COMBINED SCIENCE: TRILOGY

Foundation Tier

Biology Paper 1F

8464/B/1F

F

Diagram Booklet

[Turn over]

FIGURE 1

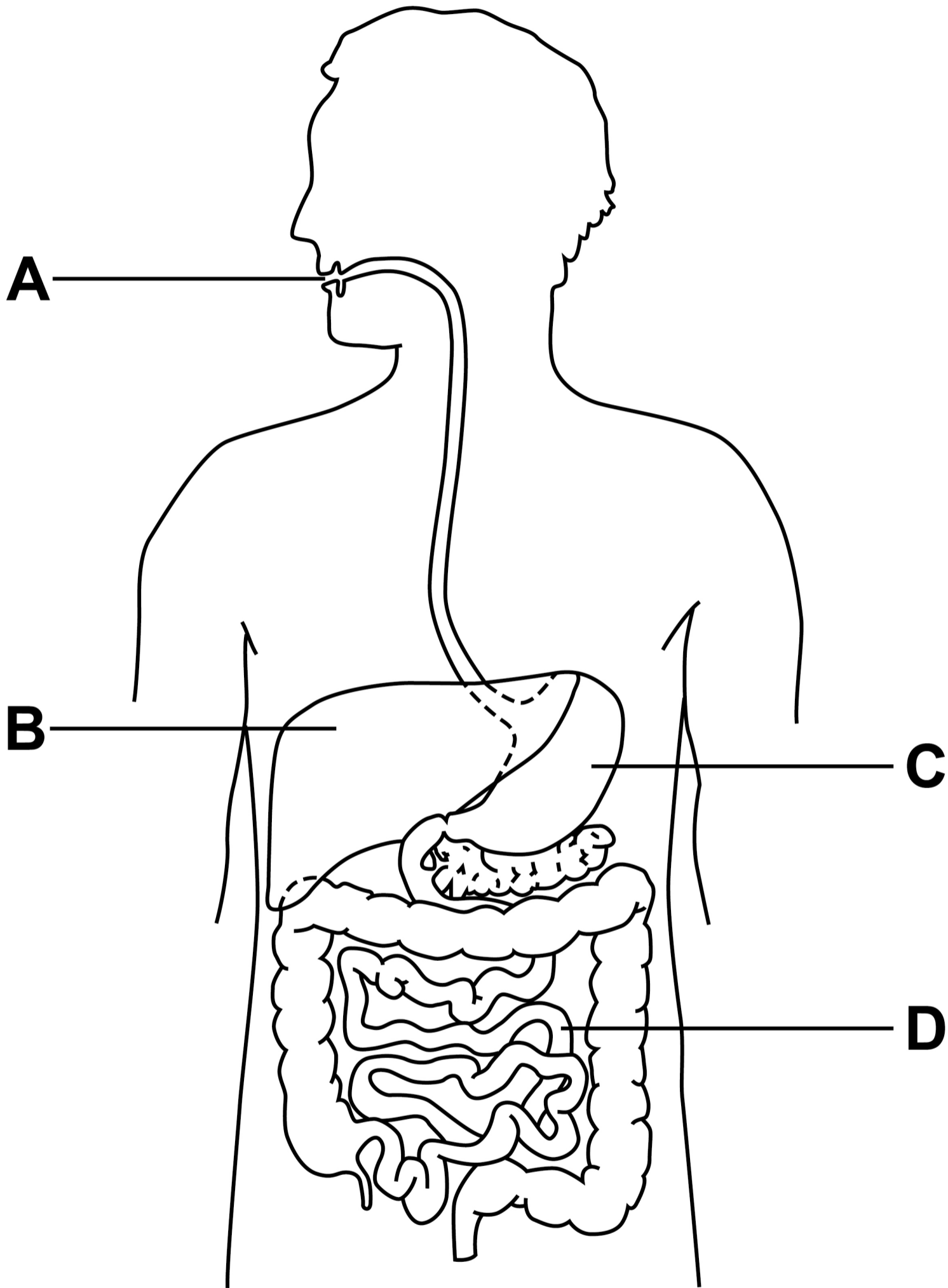
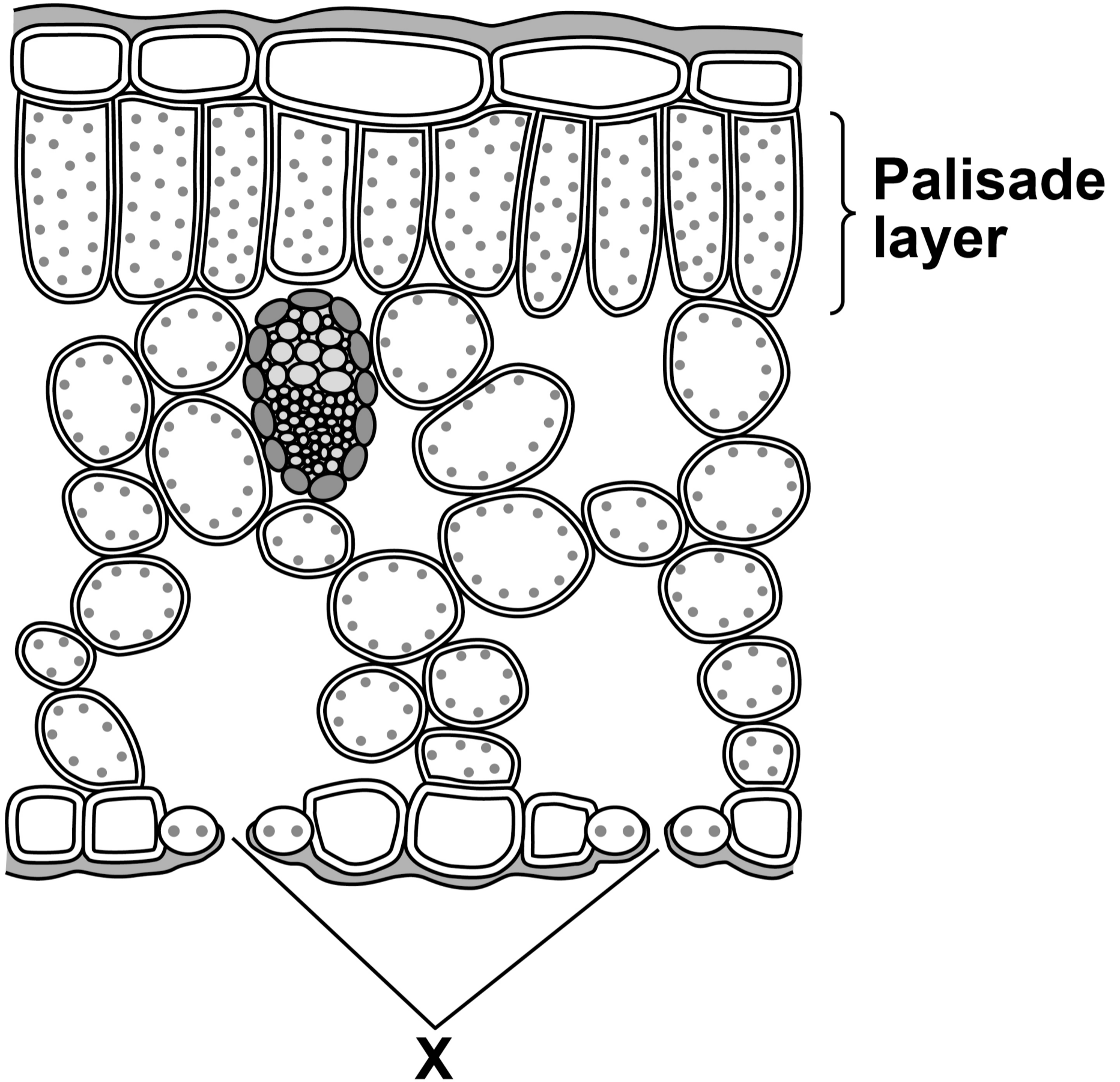


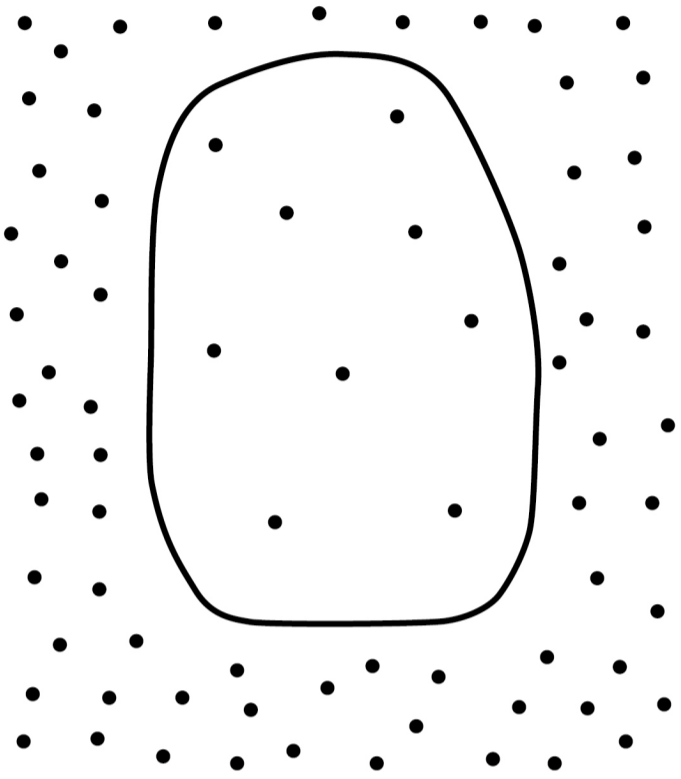
FIGURE 2



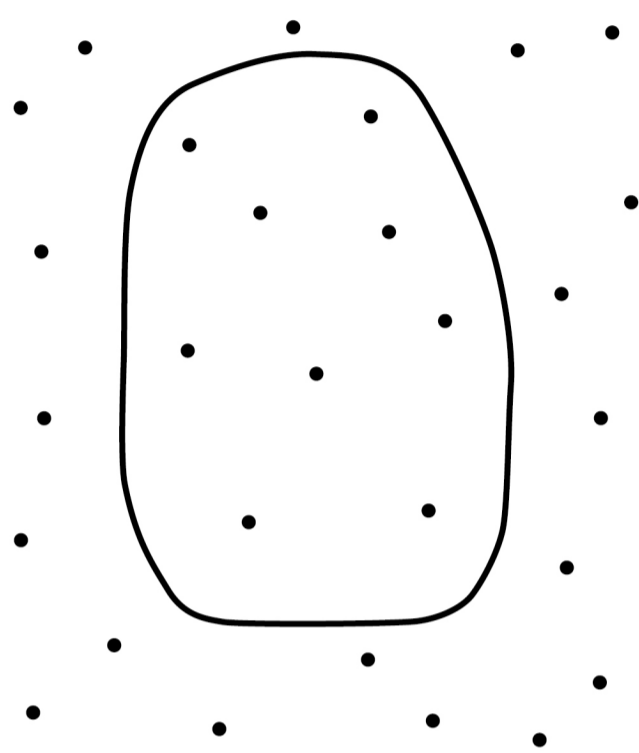
[Turn over]

FIGURE 3

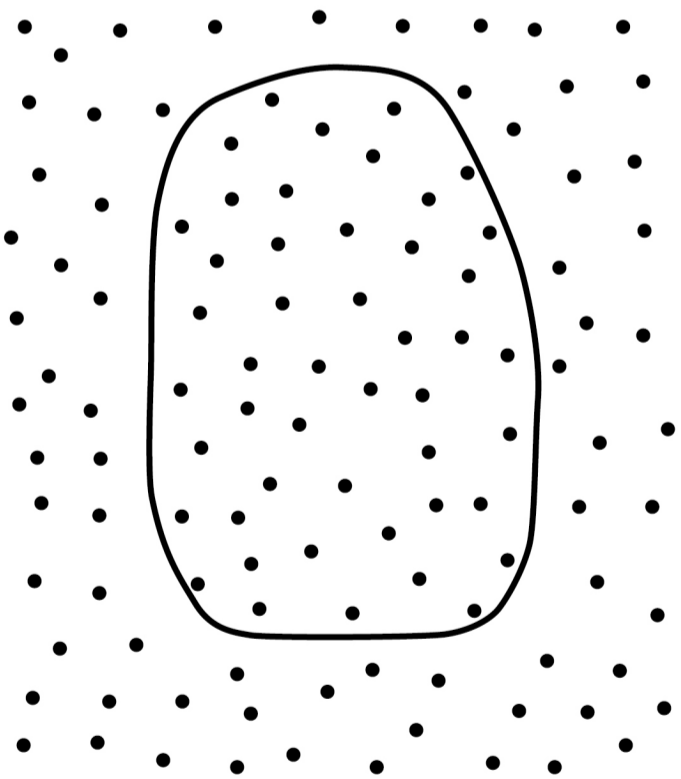
Cell A



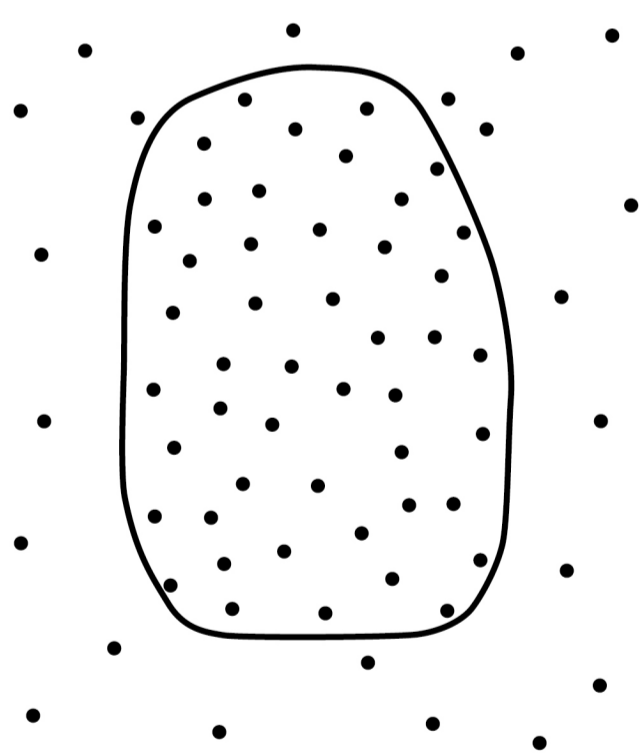
Cell B



Cell C



Cell D

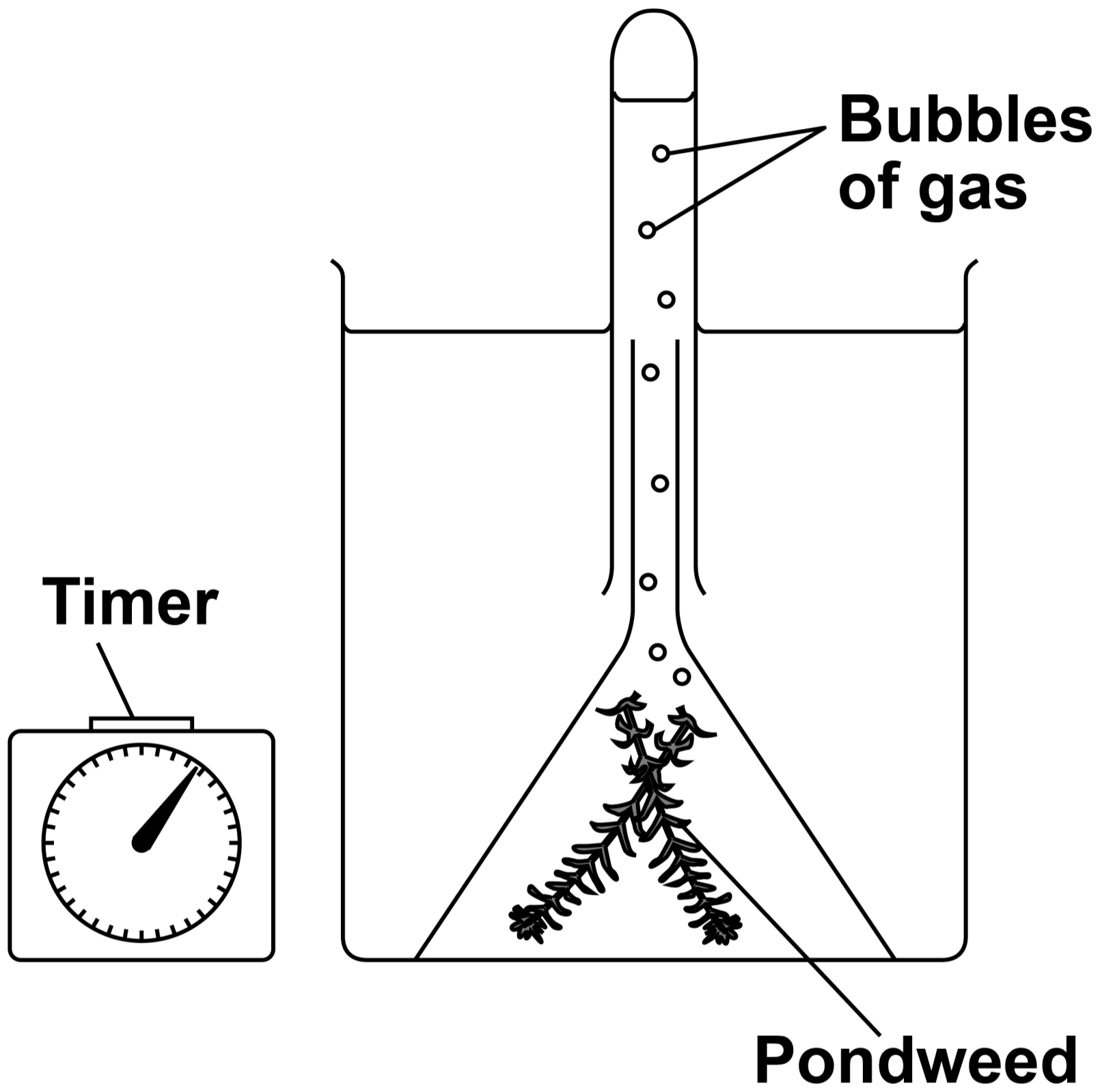


KEY

• **Carbon dioxide molecule**

5

FIGURE 4



[Turn over]

FIGURE 6

Number of new cases of skin cancer

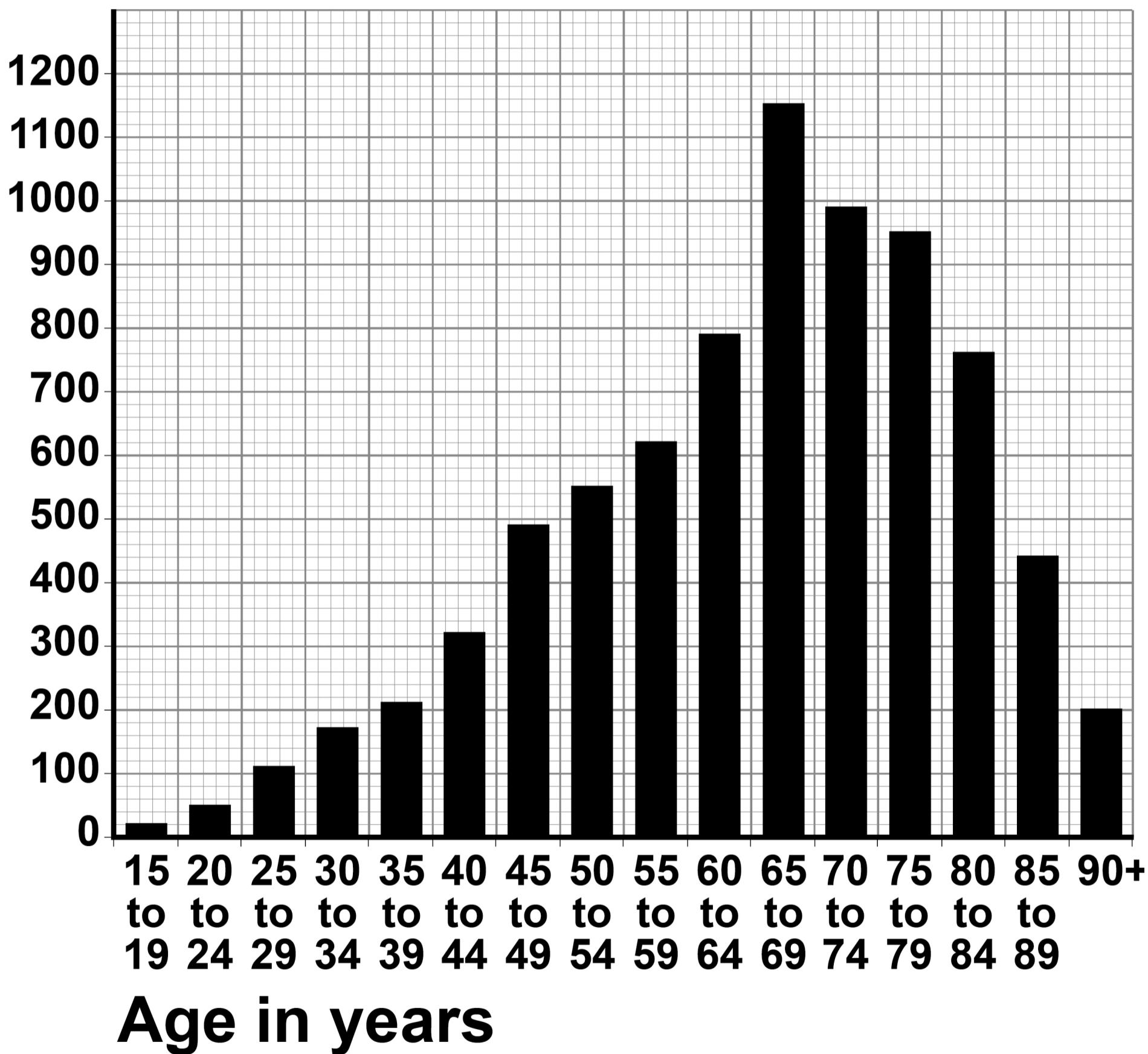
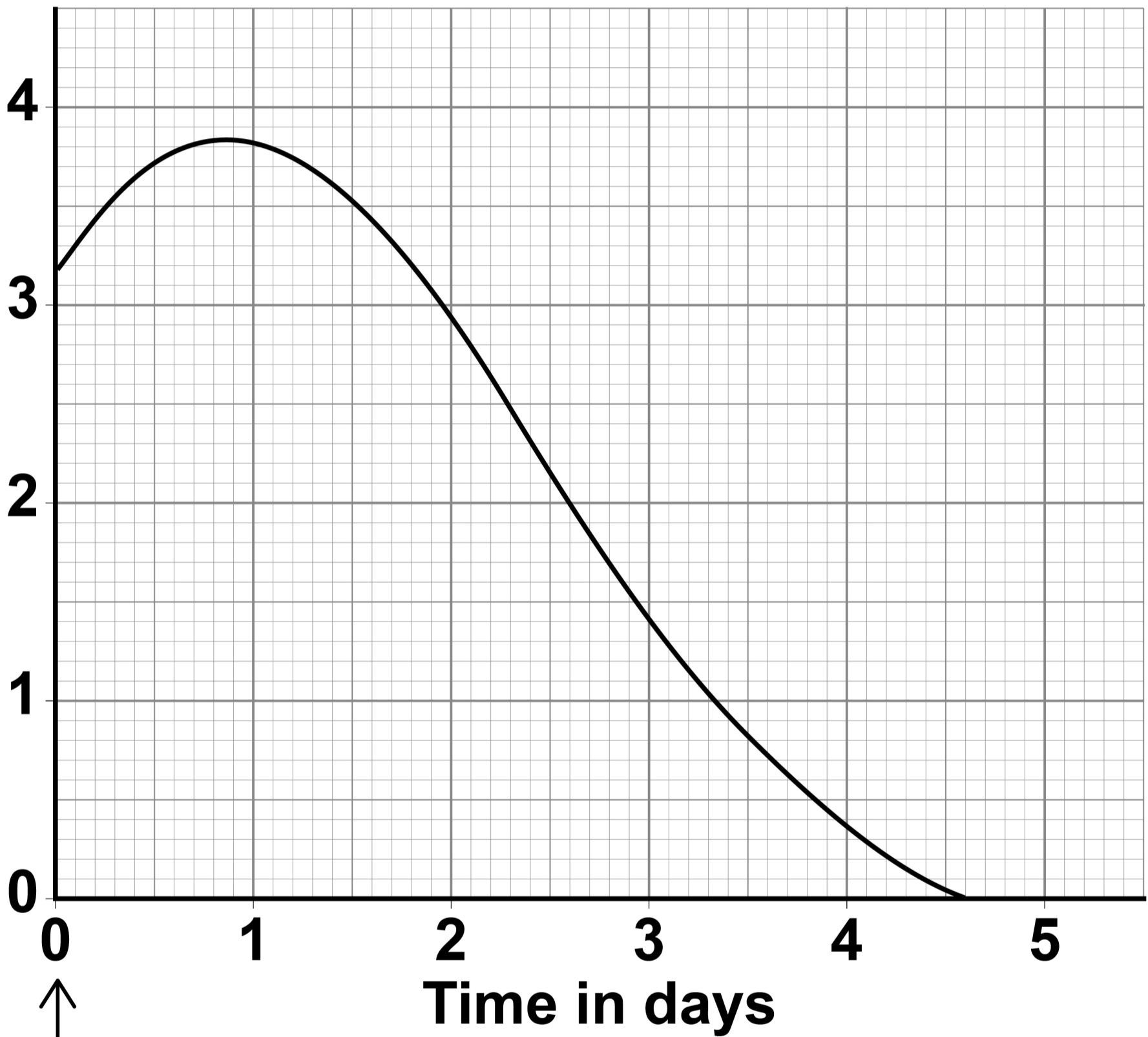


FIGURE 7

**Concentration
of live bacteria
in the body in
arbitrary units**



**Course of
antibiotics
started**

[Turn over]

FIGURE 8

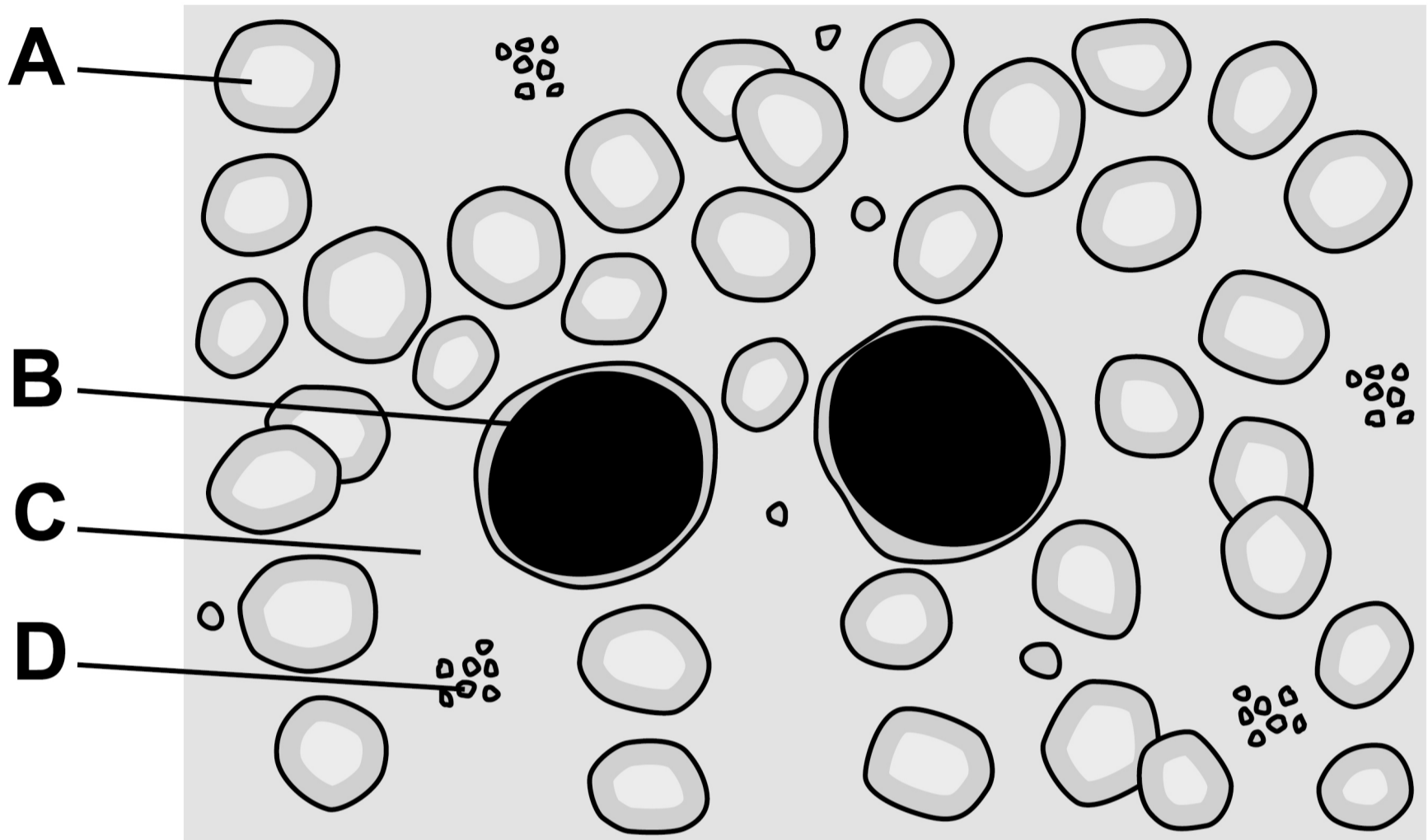
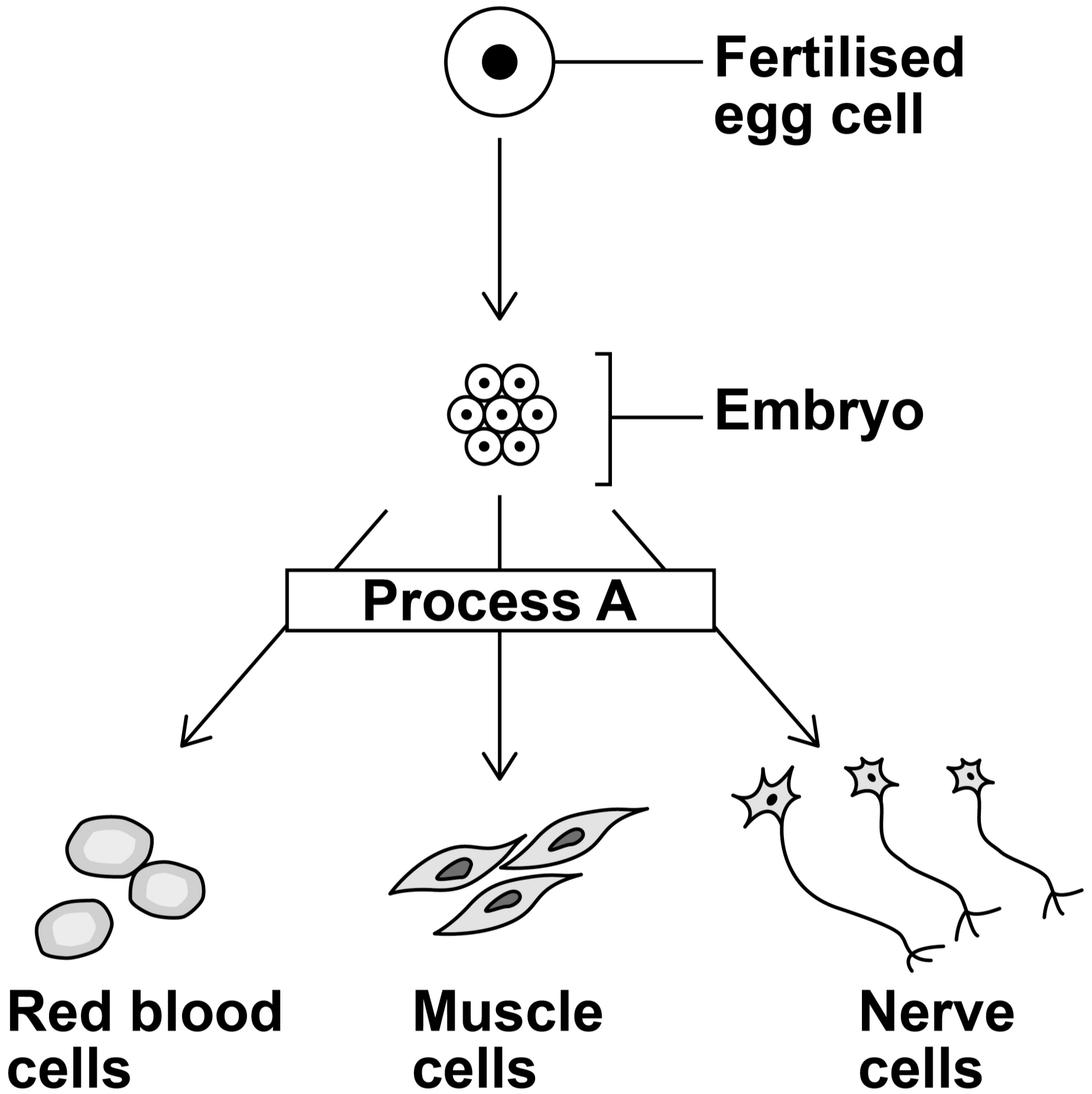


FIGURE 9



[Turn over]

FIGURE 10

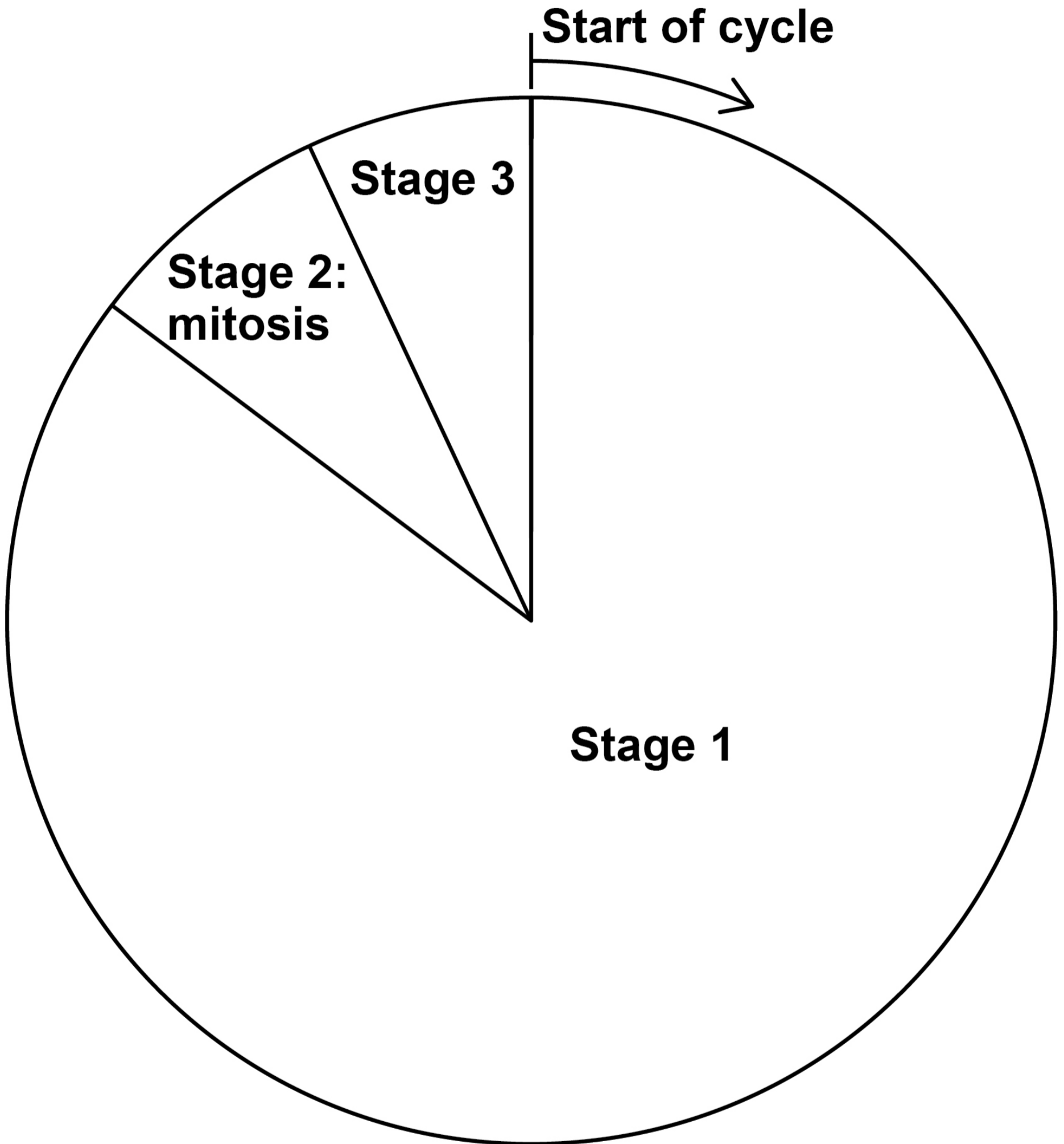
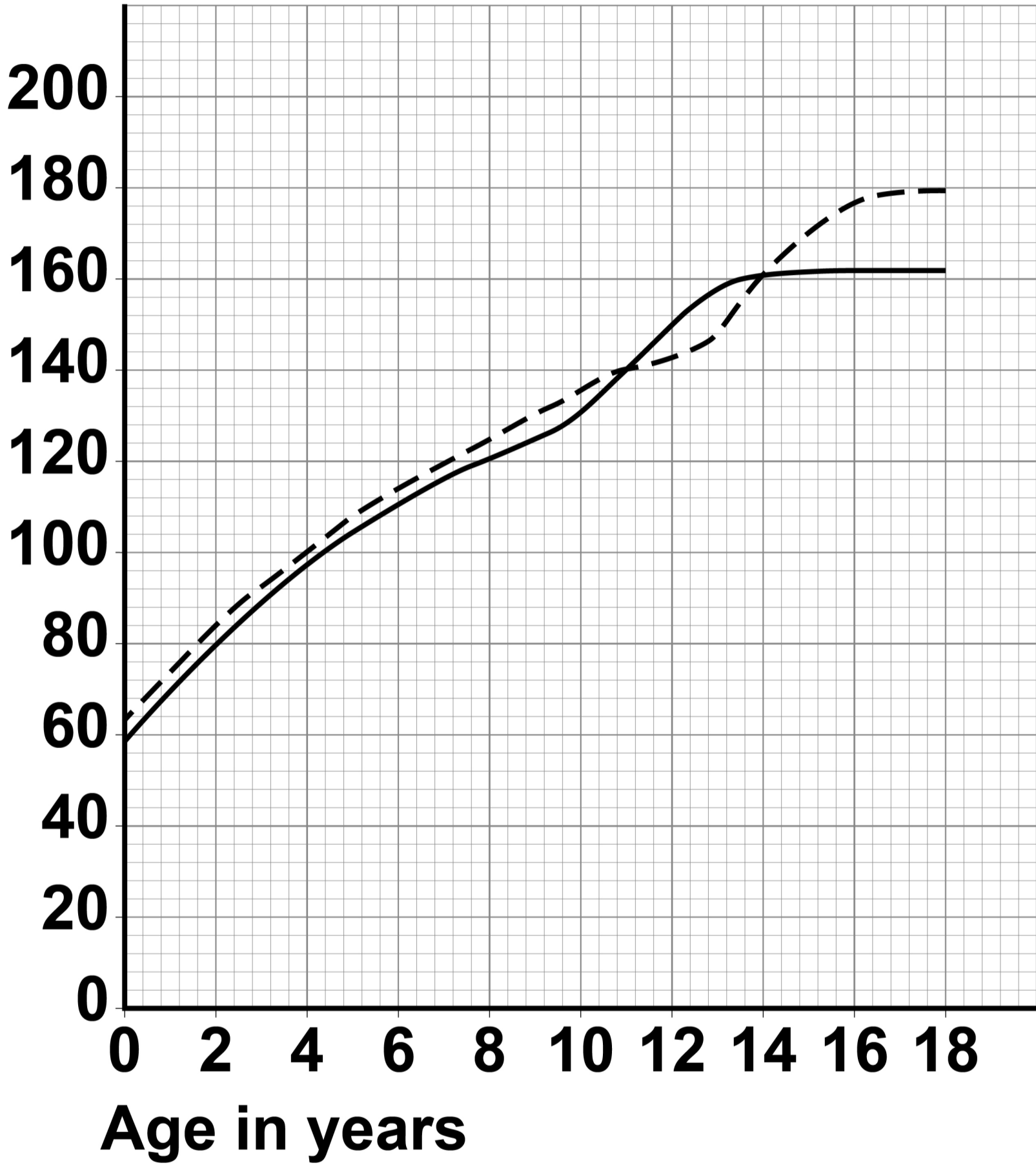


FIGURE 11
Mean height
in cm



KEY

Boys - - - -

Girls ———

END OF DIAGRAM BOOKLET

BLANK PAGE

Copyright information

For confidentiality purposes, all acknowledgements of third-party copyright material are published in a separate booklet. This booklet is published after each live examination series and is available for free download from www.aqa.org.uk.

Permission to reproduce all copyright material has been applied for. In some cases, efforts to contact copyright-holders may have been unsuccessful and AQA will be happy to rectify any omissions of acknowledgements. If you have any queries please contact the Copyright Team.

Copyright © 2022 AQA and its licensors. All rights reserved.

IB/M/CD/Jun22/8464/B/1F/E2



2 2 6 G 8 4 6 4 / B / 1 F