



Surname _____

Forename(s) _____

Centre Number _____

Candidate Number _____

Candidate Signature _____

I declare this is my own work.

A-level

MATHEMATICS

Paper 2

7357/2

Tuesday 13 June 2023 Afternoon

Time allowed: 2 hours

At the top of the page, write your surname and forename(s), your centre number, your candidate number and add your signature.

[Turn over]



MATERIALS

For this paper you must have:

- **the AQA Formulae for A-level Mathematics booklet**
- **a graphical or scientific calculator that meets the requirements of the specification.**

INSTRUCTIONS

- **Use black ink or black ball-point pen. Pencil should only be used for drawing.**
- **Answer ALL questions.**
- **You must answer each question in the space provided for that question.**
- **If you need extra space for your answer(s), use the lined pages at the end of this book. Write the question number against your answer(s).**
- **Do NOT write on blank pages.**



- **Show all necessary working; otherwise, marks for method may be lost.**
- **Do all rough work in this book.
Cross through any work you do not want to be marked.**

INFORMATION

- **The marks for questions are shown in brackets.**
- **The maximum mark for this paper is 100.**

ADVICE

- **Unless stated otherwise, you may quote formulae, without proof, from the booklet.**
- **You do not necessarily need to use all the space provided.**

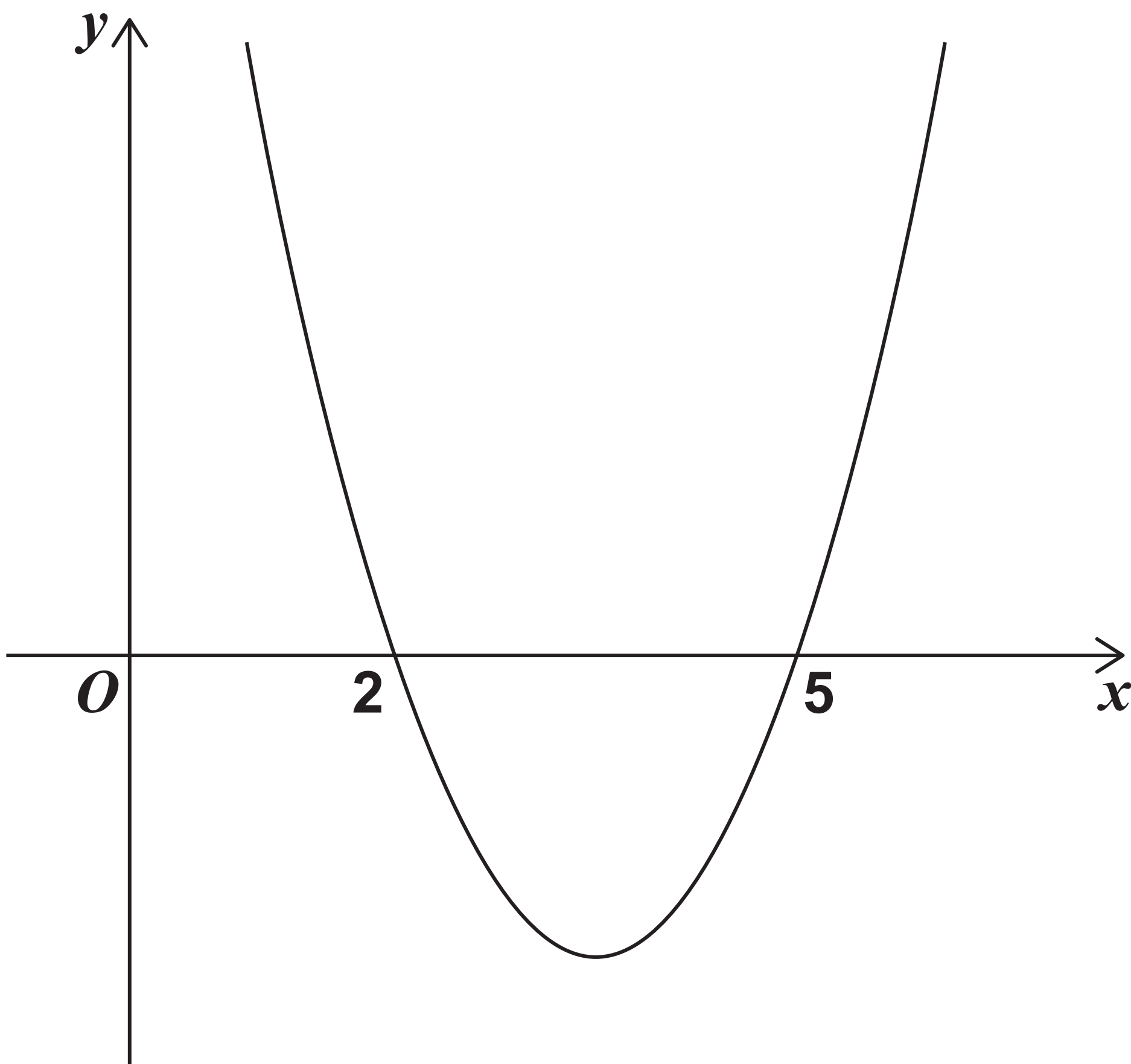
DO NOT TURN OVER UNTIL TOLD TO DO SO



SECTION A

Answer ALL questions in the spaces provided.

- 1** The graph of $y = ax^2 + bx + c$ has roots $x = 2$ and $x = 5$, as shown in the diagram below.



5

**State the set of values of x
which satisfy**

$$ax^2 + bx + c > 0$$

Tick (✓) ONE box. [1 mark]

☐

$$\{x : x < 2\} \cup \{x : x > 5\}$$

☐

$$\{x : 0 < x < 2\} \cap \{x : x > 5\}$$

☐

$$\{x : 2 < x < 5\}$$

☐

$$\{x : 2 > x > 5\}$$

[Turn over]



2

It is given that

$$\int_0^6 f(x) \, dx = 20 \quad \text{and}$$

$$\int_3^6 f(x) \, dx = -10$$

Find the value of $\int_0^3 f(x) \, dx$

Circle your answer. [1 mark]

−30

−10

10

30



3

A circle has equation

$$(x - 5)^2 + (y - 13)^2 = 16$$

Find the radius of the circle.

Circle your answer. [1 mark]

4

12

16

256

[Turn over]



4 **A curve has equation**

$$y = \frac{x^2}{8} + 4\sqrt{x}$$

4 (a) Find an expression for $\frac{dy}{dx}$
[3 marks]



[Turn over]



4 (b) The point P with coordinates $(4, 10)$ lies on the curve.

Find an equation of the tangent to the curve at the point P
[2 marks]

4 (c) Show that the curve has no stationary points. [2 marks]

[Turn over]



5 Ziad is training to become a long-distance swimmer.

He trains every day by swimming lengths at his local pool.

The length of the pool is 25 metres.

Each day he increases the number of lengths that he swims by four.

On his first day of training, Ziad swims 10 lengths of the pool.



- 5 (a)** Write down an expression for the number of lengths Ziad will swim on his n th day of training.
[1 mark]

[Turn over]

5 (b) (i) Ziad's target is to be able to swim at least 3000 metres in one day.

Determine the minimum number of days he will need to train to reach his target. [3 marks]



[Turn over]



5 (b) (ii) Ziad's coach claims that when he reaches his target he will have covered a total distance of over 50 000 metres.

Determine if Ziad's coach is correct. [3 marks]



BLANK PAGE

[Turn over]



6 Victoria, a market researcher, believes the average weekly value, £ V million, of online grocery sales in the UK has grown exponentially since 2009.

Victoria models the incomplete data, shown in the table on the opposite page, using the formula

$$V = a \times b^N$$

where N is the number of years since 2009 and a and b are constants.



Year	Average Weekly Sales £V million
2009	56.4
2010	
2011	74.5
2012	86.9
2013	97.7
2014	109.3
2015	
2016	141.9

[Turn over]

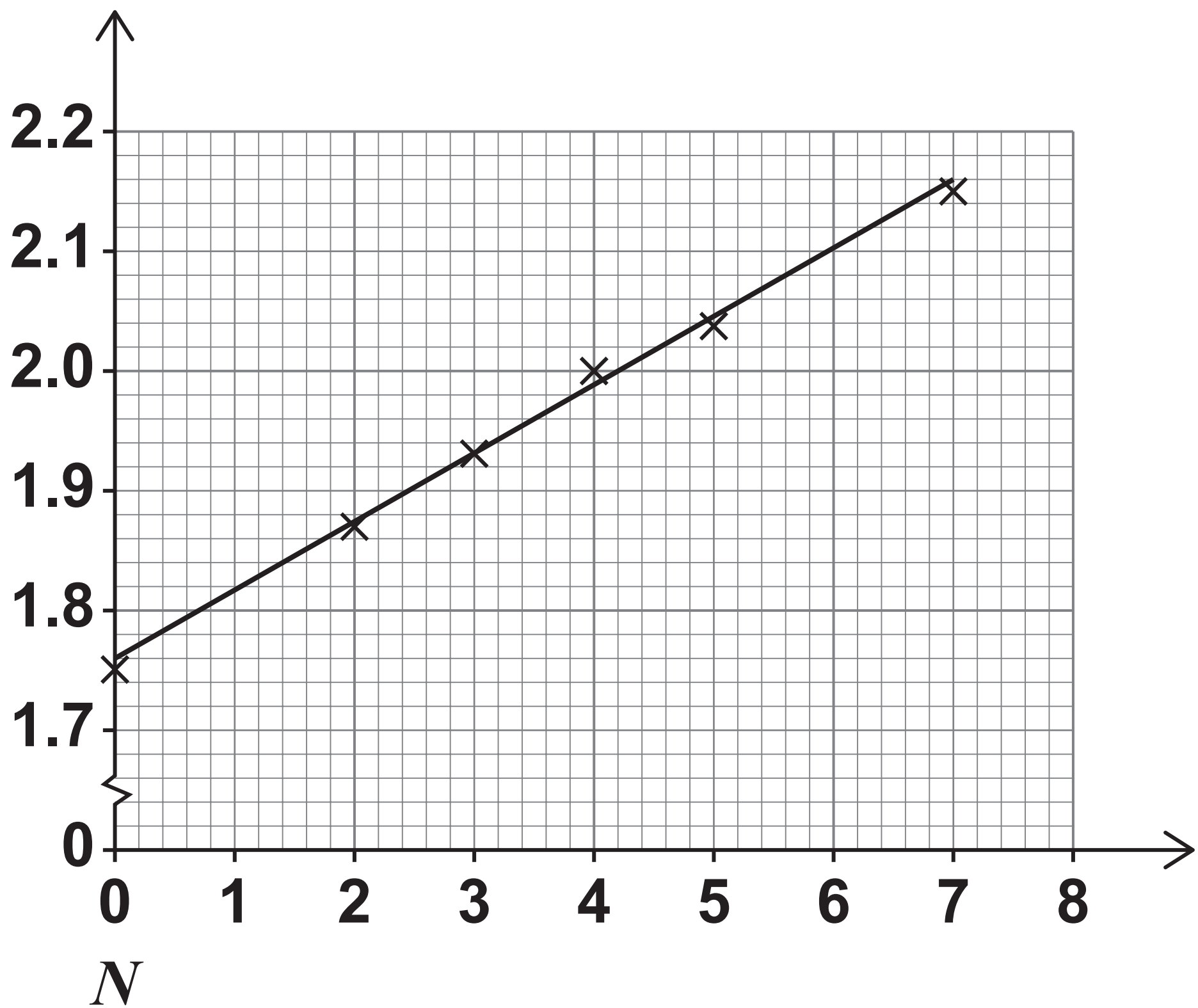


6 (a) Victoria wishes to determine the values of a and b in her formula.

To do this she plots a graph of $\log_{10} V$ against N and then draws a line of best fit as shown in the diagram on the opposite page.

The equation of Victoria's line of best fit is

$$\log_{10} V = 0.057 N + 1.76$$

$\log_{10} V$ 

[Turn over]



6 (a) (i) Use the equation of Victoria's line of best fit to show that, correct to three significant figures, $a = 57.5$ [1 mark]



6 (a) (ii) Use the equation of Victoria's line of best fit to find the value of b

Give your answer to three significant figures. [1 mark]

[Turn over]



- 6 (b) According to Victoria's model, state the yearly percentage increase in the average weekly value of online grocery sales. [1 mark]**

- 6 (c) (i) Use Victoria's model to predict the average weekly value of online grocery sales in 2025. [2 marks]**



6 (c) (ii) Explain why the prediction made in part (c)(i) may be unreliable. [1 mark]

[Turn over]



7 **The functions f and g are defined by**

$$f(x) = \sqrt{10 - 2x} \quad \text{for } x \leq 5$$

$$g(x) = \frac{1}{x} \quad \text{for } x \neq 0$$

The function h has maximum possible domain and is defined by

$$h(x) = gf(x)$$

**7 (a) Find an expression for $h(x)$
[1 mark]**



7 (b) Find the domain of h [1 mark]

**7 (c) Show that $h^{-1}(x) = 5 - \frac{1}{2x^2}$
[3 marks]**

[Turn over]





8 (a) **Given that $\cos \theta \neq \pm 1$, prove the identity**

$$\frac{1}{1 - \cos \theta} + \frac{1}{1 + \cos \theta} \equiv 2 \operatorname{cosec}^2 \theta$$

[4 marks]

[Turn over]





- 8 (b) Hence, find the set of values of A for which the equation

$$\frac{1}{1 - \cos \theta} + \frac{1}{1 + \cos \theta} = A$$

has real solutions.

Fully justify your answer.
[3 marks]

[Turn over]





8 (c) Given that θ is obtuse and

$$\frac{1}{1 - \cos \theta} + \frac{1}{1 + \cos \theta} = 16$$

find the exact value of $\cos \theta$
[3 marks]

[Turn over]





9 (a) Find the first three terms, in ascending powers of x , of the binomial expansion of

$$(1 + x)^{-\frac{1}{2}} \quad [2 \text{ marks}]$$

[Turn over]



9 (b) A student substitutes $x = 2$ into the expansion of $(1 + x)^{-\frac{1}{2}}$ to find an approximation for $\frac{1}{\sqrt{3}}$

Explain the mistake in the student's approach. [1 mark]



9 (c) By substituting $x = -\frac{1}{4}$ in your expansion for $(1+x)^{-\frac{1}{2}}$ find an approximation for $\frac{1}{\sqrt{3}}$

Give your answer to three significant figures. [3 marks]

[Turn over]





BLANK PAGE

[Turn over]



- 10 (a) Expand and simplify $(a - b)^2$
[1 mark]**

- 10 (b) Peter thinks that the sum of any rational number and its reciprocal is always greater than 2**

Peter checks two examples:

$$\frac{2}{3} + \frac{3}{2} = 2.1\dot{6}$$

$$2 + \frac{1}{2} = 2.5$$

**Use a counter example to
show that Peter is INCORRECT.
[2 marks]**

[Turn over]



10 (c) **Given that a and b are distinct positive numbers, use proof by contradiction to prove that**

$$\frac{a}{b} + \frac{b}{a} > 2 \quad [3 \text{ marks}]$$



END OF SECTION A

[Turn over]



SECTION B

Answer ALL questions in the spaces provided.

11 A decoration is hanging freely from a fixed point on a ceiling.

The decoration has a mass of 0.2 kilograms.

The decoration is hanging by a light, inextensible wire.

The wire is 0.1 metres long.

Find the tension in the wire.

Circle your answer. [1 mark]

0.02 N

0.02g N

0.2 N

0.2g N



BLANK PAGE

[Turn over]



12

A particle moves in a straight line.

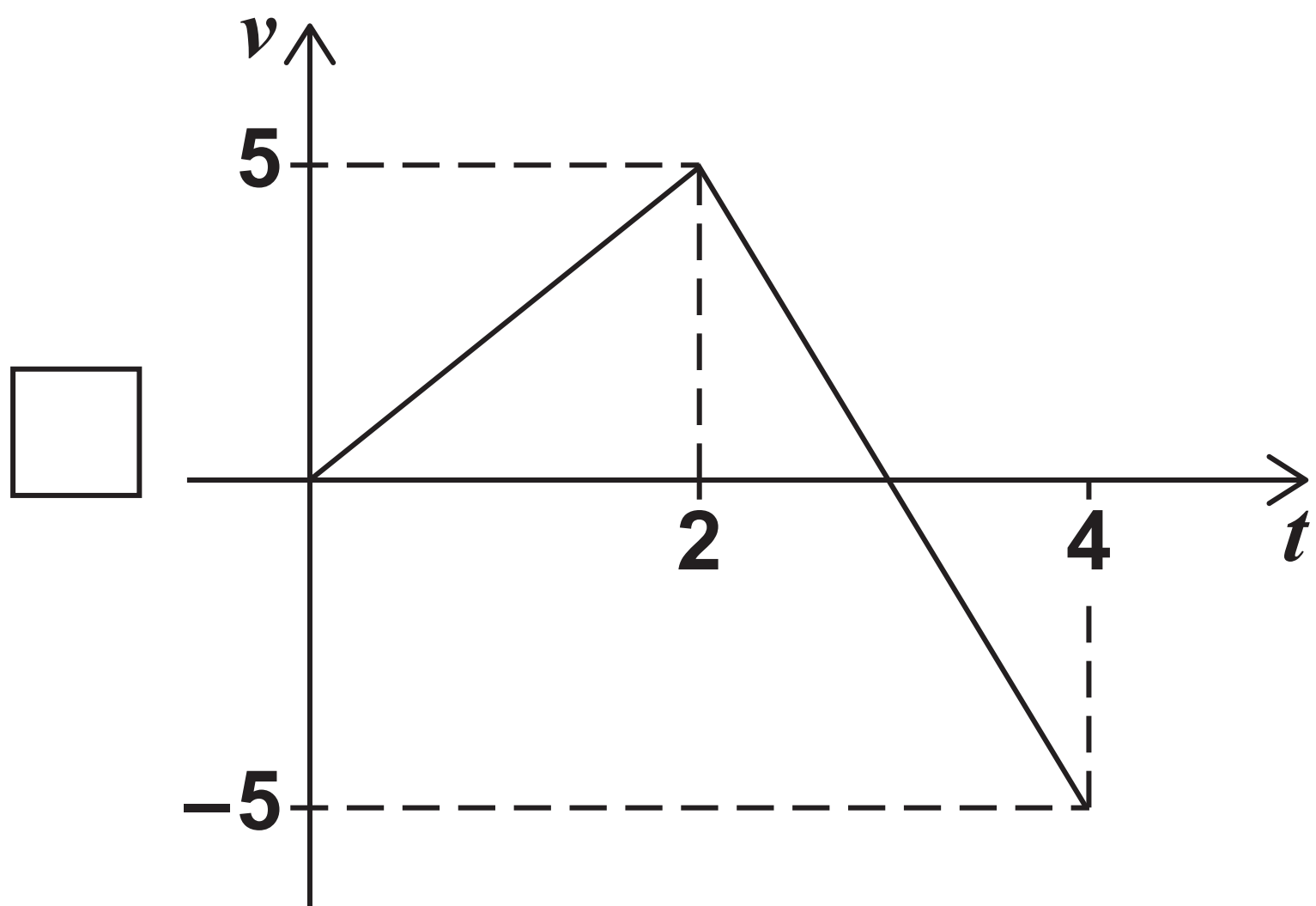
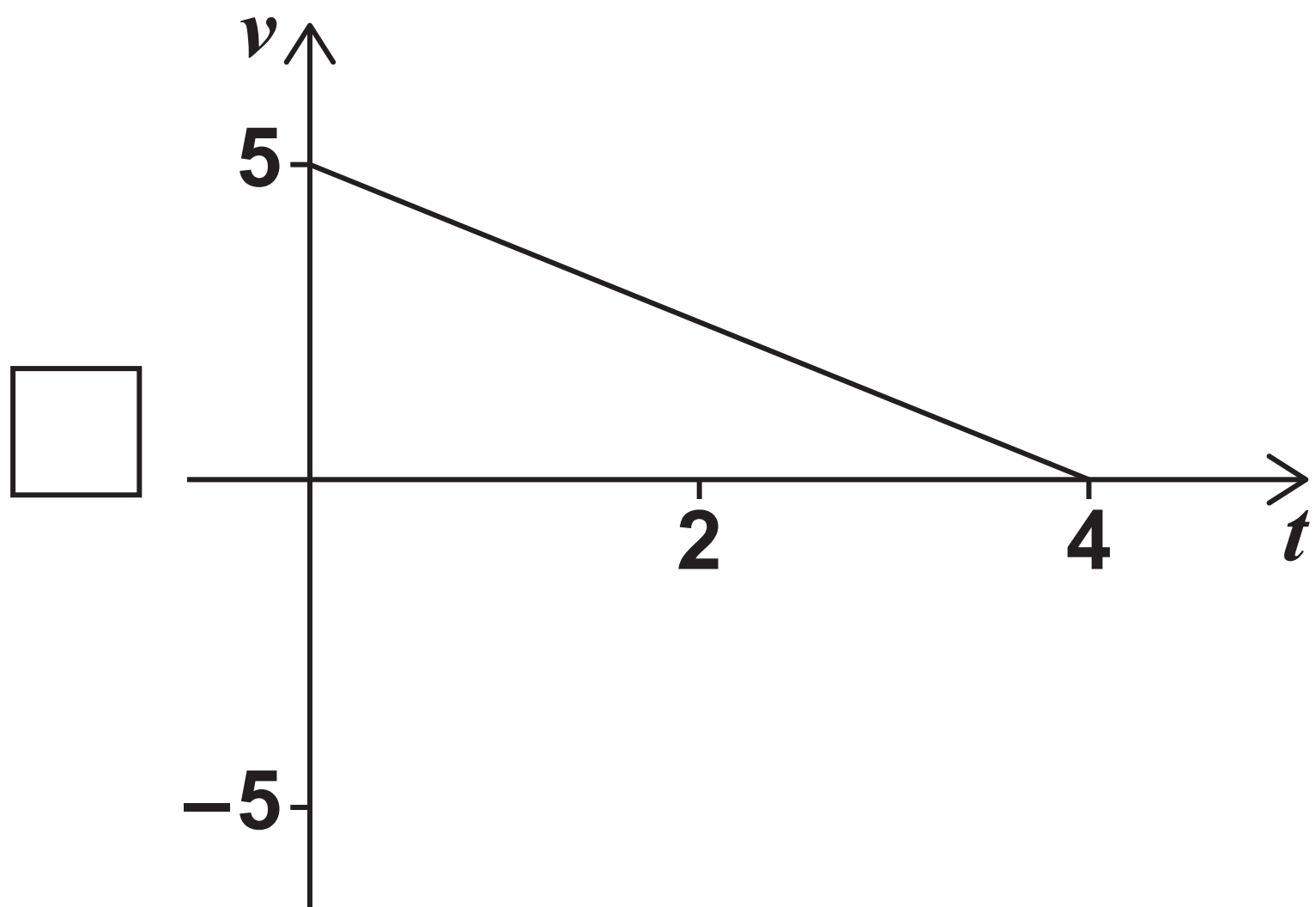
After the first 4 seconds of its motion, the displacement of the particle from its initial position is 0 metres.

One of the graphs on pages 47 and 48 shows the velocity $v \text{ ms}^{-1}$ of the particle after time t seconds of its motion.



Identify the correct graph.

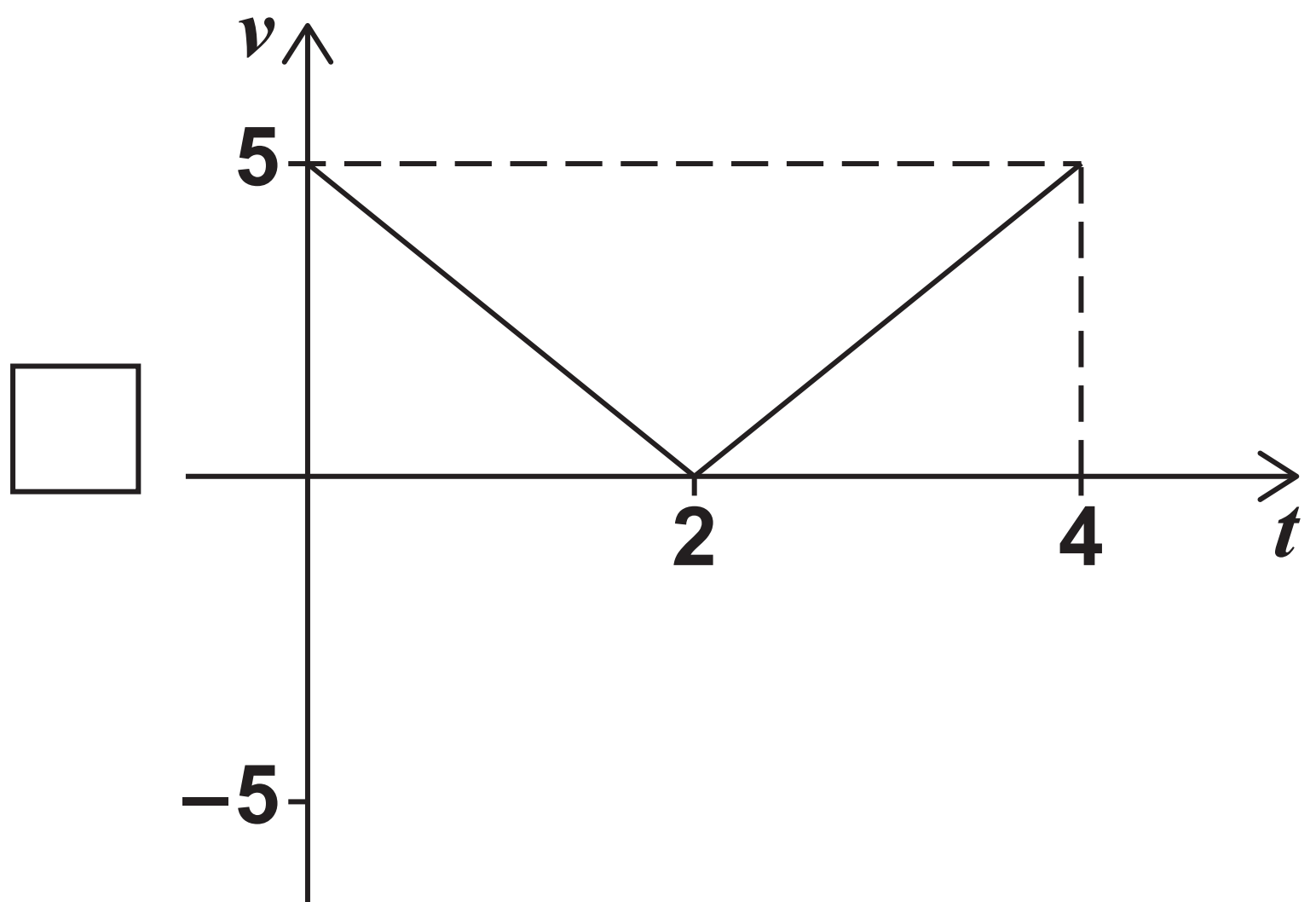
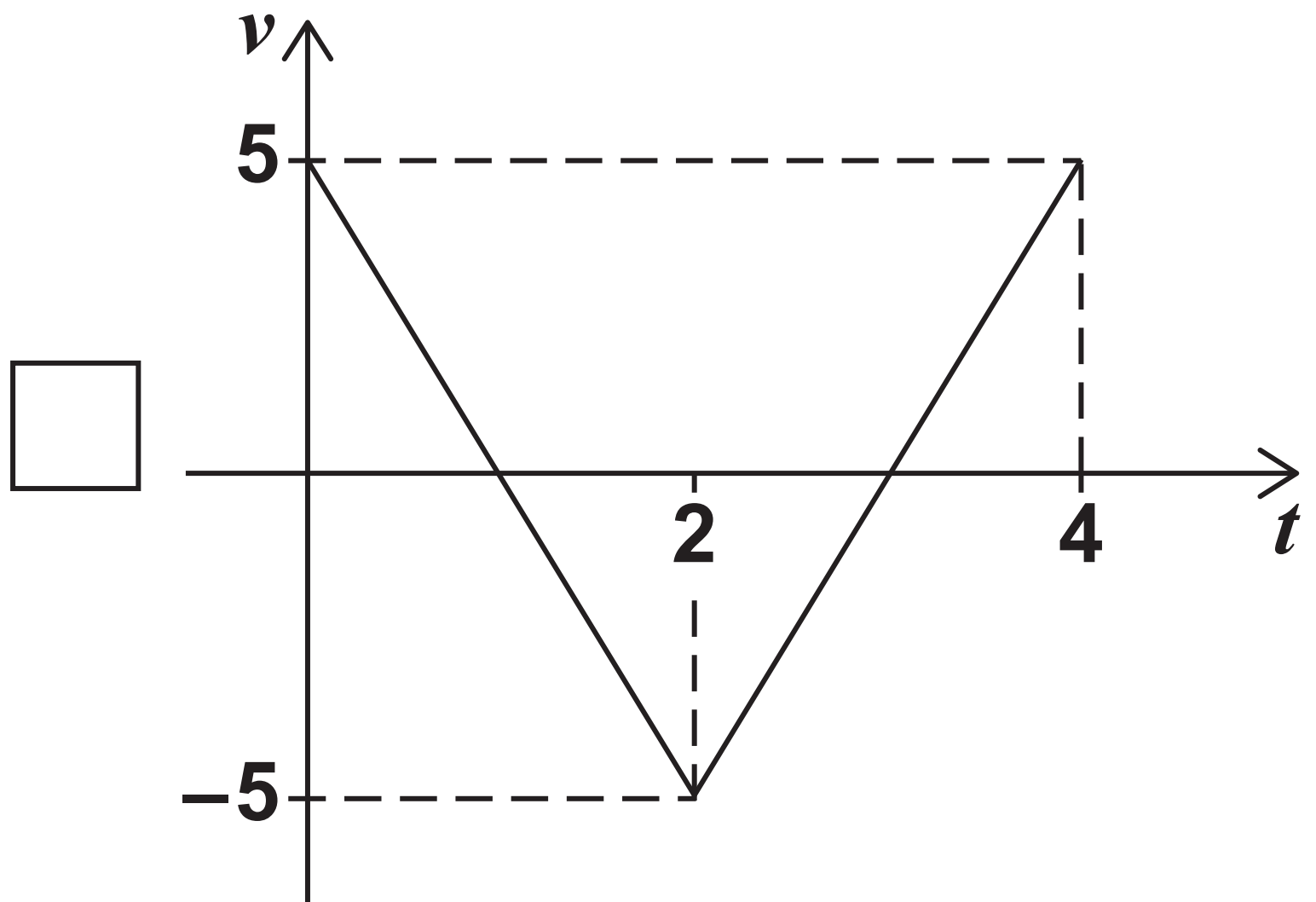
Tick (✓) ONE box. [1 mark]



[Turn over]



48



BLANK PAGE

[Turn over]



13

A ball falls freely towards the Earth.

The ball passes through two different fixed points M and N before reaching the Earth's surface.

At M the ball has velocity $u \text{ ms}^{-1}$

At N the ball has velocity $3u \text{ ms}^{-1}$

It can be assumed that:

- **the motion is due to gravitational force only**
- **the acceleration due to gravity remains constant throughout.**



- 13 (a) Show that the time taken for the ball to travel from M to N is $\frac{2u}{g}$ seconds. [2 marks]

[Turn over]



13 (b) Point M is h metres above the Earth.

Show that $h > \frac{4u^2}{g}$

Fully justify your answer.
[3 marks]

[Turn over]



14

A car has an initial velocity of 1 ms^{-1}

The car is moving in a straight line.

The acceleration $a \text{ ms}^{-2}$ of the car at time t seconds is given by

$$a = 3kt^2 - 2kt + 1$$

where k is a constant.

When $t = 3$ the car has a velocity of 10 ms^{-1}

Show that $k = \frac{1}{3}$ [4 marks]





15

IN THIS QUESTION USE
 $g = 9.8\text{ms}^{-2}$

A particle, Q , moves in a straight line across a rough horizontal surface.

A horizontal driving force of magnitude D newtons acts on Q

Q moves with a constant acceleration of 0.91ms^{-2}

Q has a WEIGHT of 0.65 N

The only resistance force acting on Q is due to friction.

The coefficient of friction between Q and the surface is 0.4



57

Find D [4 marks]

[illegible]

[Turn over]



5 7



BLANK PAGE

[Turn over]



16

A particle moves under the action of two forces, F_1 and F_2

It is given that

$$F_1 = (1.6\mathbf{i} - 5\mathbf{j}) \text{ N}$$

$$F_2 = (k\mathbf{i} + 5k\mathbf{j}) \text{ N}$$

where k is a constant.

The acceleration of the particle is $(3.2\mathbf{i} + 12\mathbf{j}) \text{ ms}^{-2}$

Find k [4 marks]

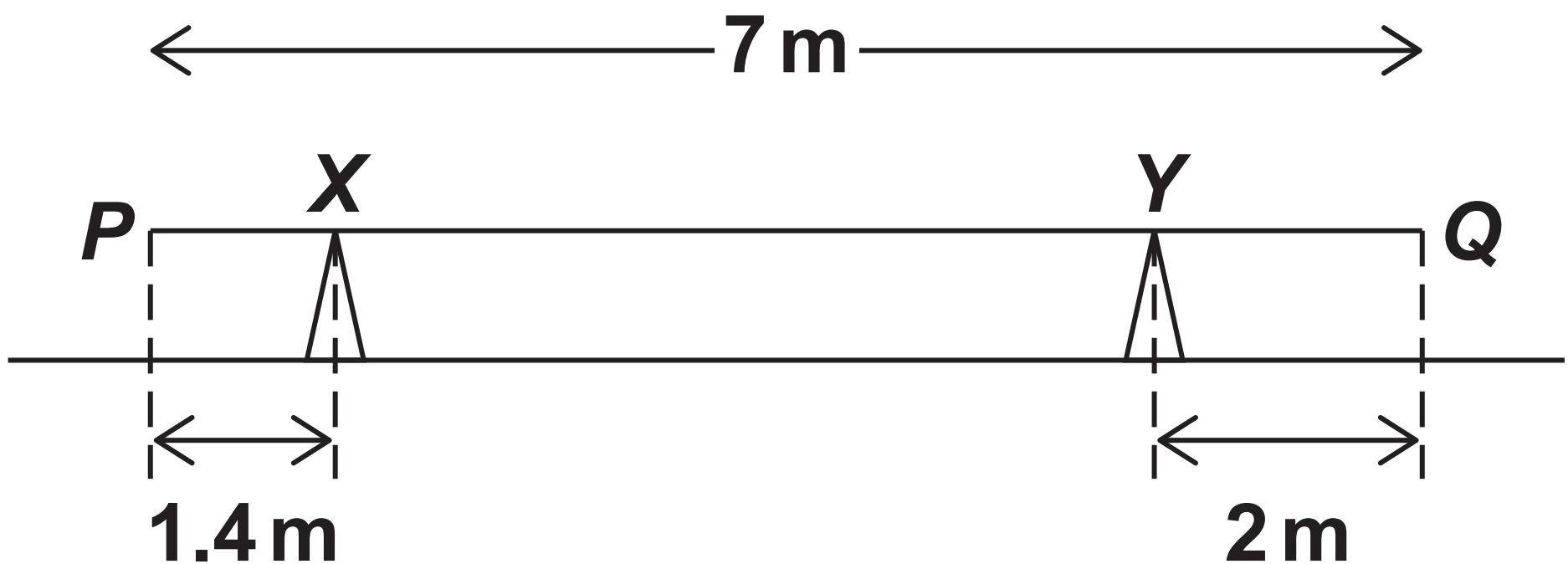




17

A uniform plank PQ , of length 7 metres, lies horizontally at rest, in equilibrium, on two fixed supports at points X and Y

The distance PX is 1.4 metres and the distance QY is 2 metres as shown in the diagram below.



17 (a) The reaction force on the plank at X is $4g$ newtons.

17 (a) (i) Show that the mass of the plank is 9.6 kilograms. [2 marks]

[Turn over]



17 (a) (ii) Find the reaction force, in terms of g , on the plank at Y [2 marks]



17 (b) The support at Y is moved so that the distance $QY = 1.4$ metres.

The plank remains horizontally at rest in equilibrium.

It is claimed that the reaction force at Y remains unchanged.

Explain, with a reason, whether this claim is correct. [2 marks]

[Turn over]





BLANK PAGE

[Turn over]



18

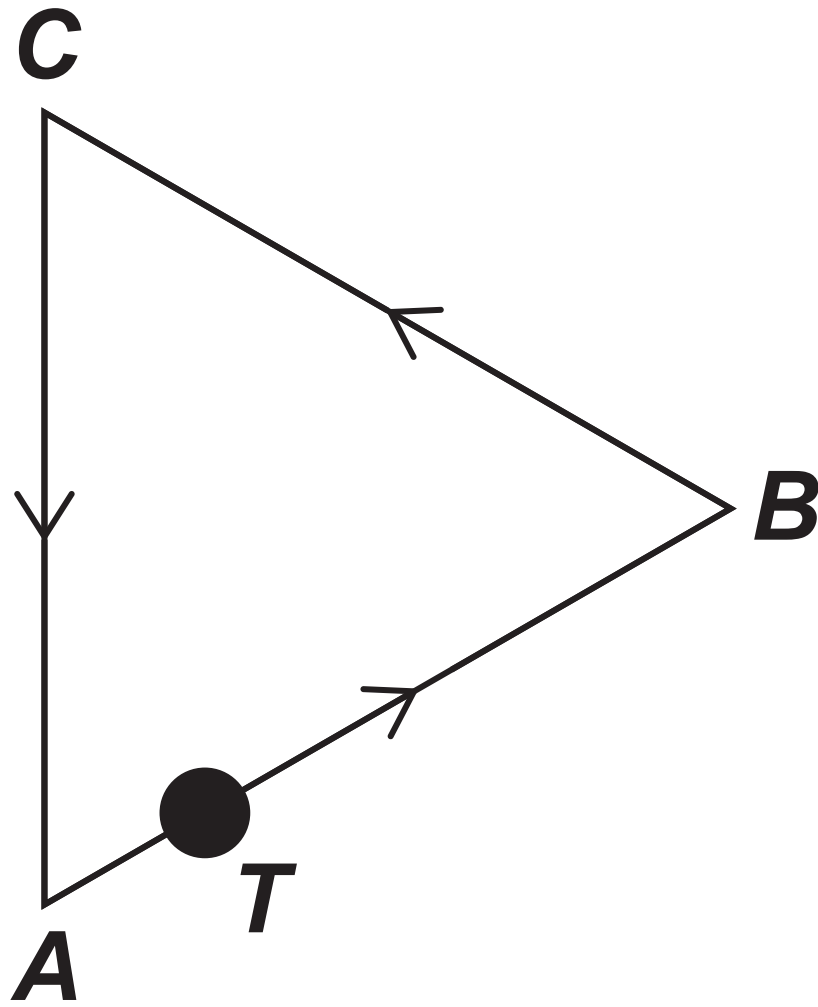
In this question i and j are perpendicular unit vectors representing due east and due north respectively.

A particle, T , is moving on a plane at a constant speed.

The path followed by T makes the exact shape of a triangle ABC .

T moves around ABC in an anticlockwise direction as shown in the diagram on the opposite page.





On its journey from A to B
the velocity vector of T is
 $(3\mathbf{i} + \sqrt{3}\mathbf{j})\text{ms}^{-1}$

[Turn over]



18 (a) Find the speed of T as it moves from A to B [1 mark]

18 (b) On its journey from B to C the velocity vector of T is $(-3\mathbf{i} + \sqrt{3}\mathbf{j})\text{ms}^{-1}$

Show that the acute angle $ABC = 60^\circ$ [2 marks]



[Turn over]



18 (c) It is given that ABC is an equilateral triangle.

T returns to its initial position after 9 seconds.

Vertex B lies at position

vector $\begin{bmatrix} 1 \\ 0 \end{bmatrix}$ metres with

respect to a fixed origin O

Find the position vector of C
[3 marks]

[illegible]

[Turn over]



19

A wooden toy comprises a train engine and a trailer connected to each other by a light, inextensible rod.

The train engine has a mass of 1.5 kilograms.

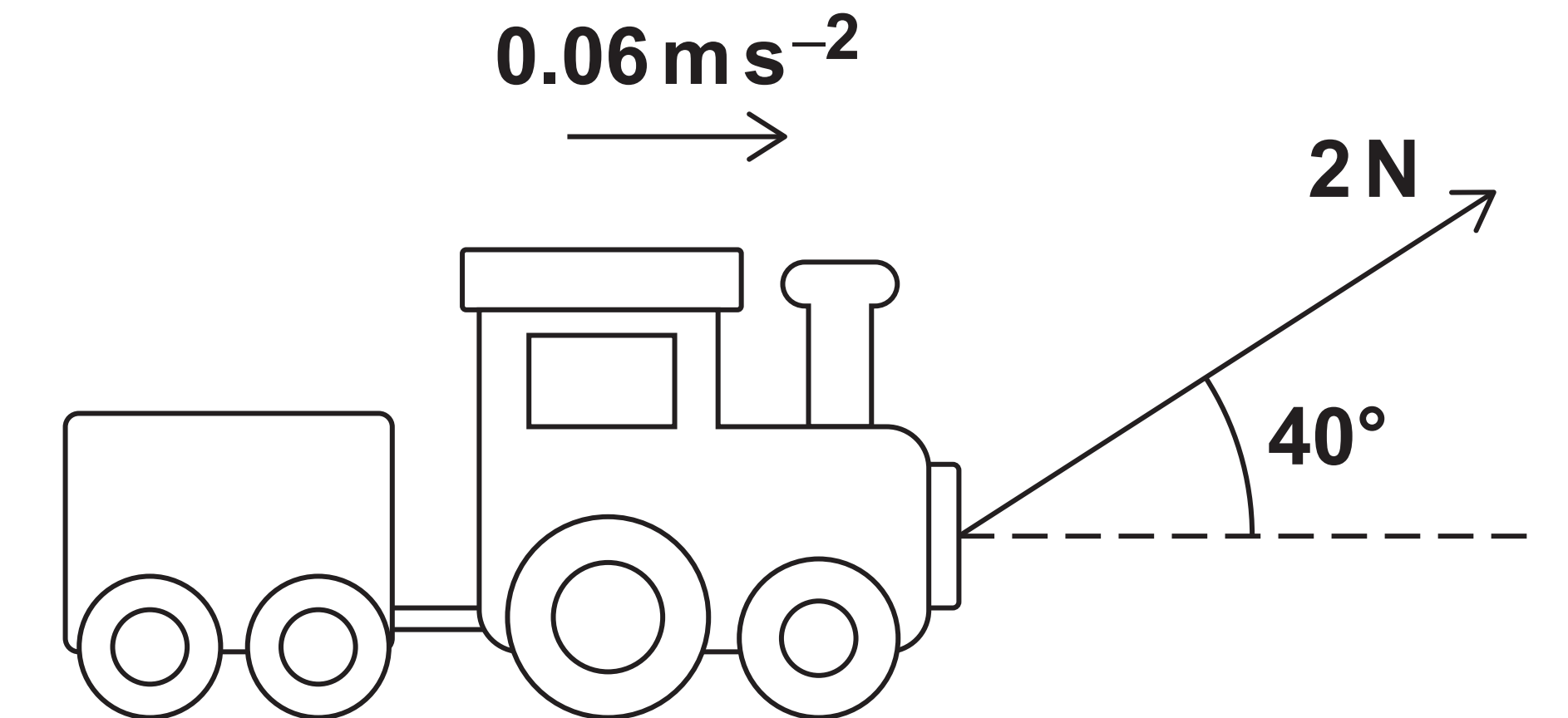
The trailer has a mass 0.7 kilograms.

A string inclined at an angle of 40° above the horizontal is attached to the front of the train engine.

The tension in the string is 2 newtons.



As a result the toy moves forward, from rest, in a straight line along a horizontal surface with acceleration 0.06 m s^{-2} as shown in the diagram below.



As it moves the train engine experiences a total resistance force of 0.8 N

[Turn over]

- 19 (a) Show that the total resistance force experienced by the trailer is approximately 0.6 N [4 marks]**



[Turn over]



- 19 (b)** At the instant that the toy reaches a speed of 0.5ms^{-1} the string breaks.

As a result of this the train engine and trailer decelerate at a constant rate until they come to rest, having travelled a distance of h metres.

It can be assumed that the resistance forces remain unchanged.

- 19 (b) (i)** Find the tension in the rod after the string has broken.
[4 marks]





19 (b) (ii) Find h [3 marks]

[illegible]

19 (c) State one modelling assumption that you have used about the rod when answering part (b)(i). [1 mark]

[Turn over]



20

IN THIS QUESTION USE

$$g = 9.8 \text{ ms}^{-2}$$

Nell and her pet dog Maia are visiting the beach.

The beach surface can be assumed to be level and horizontal.

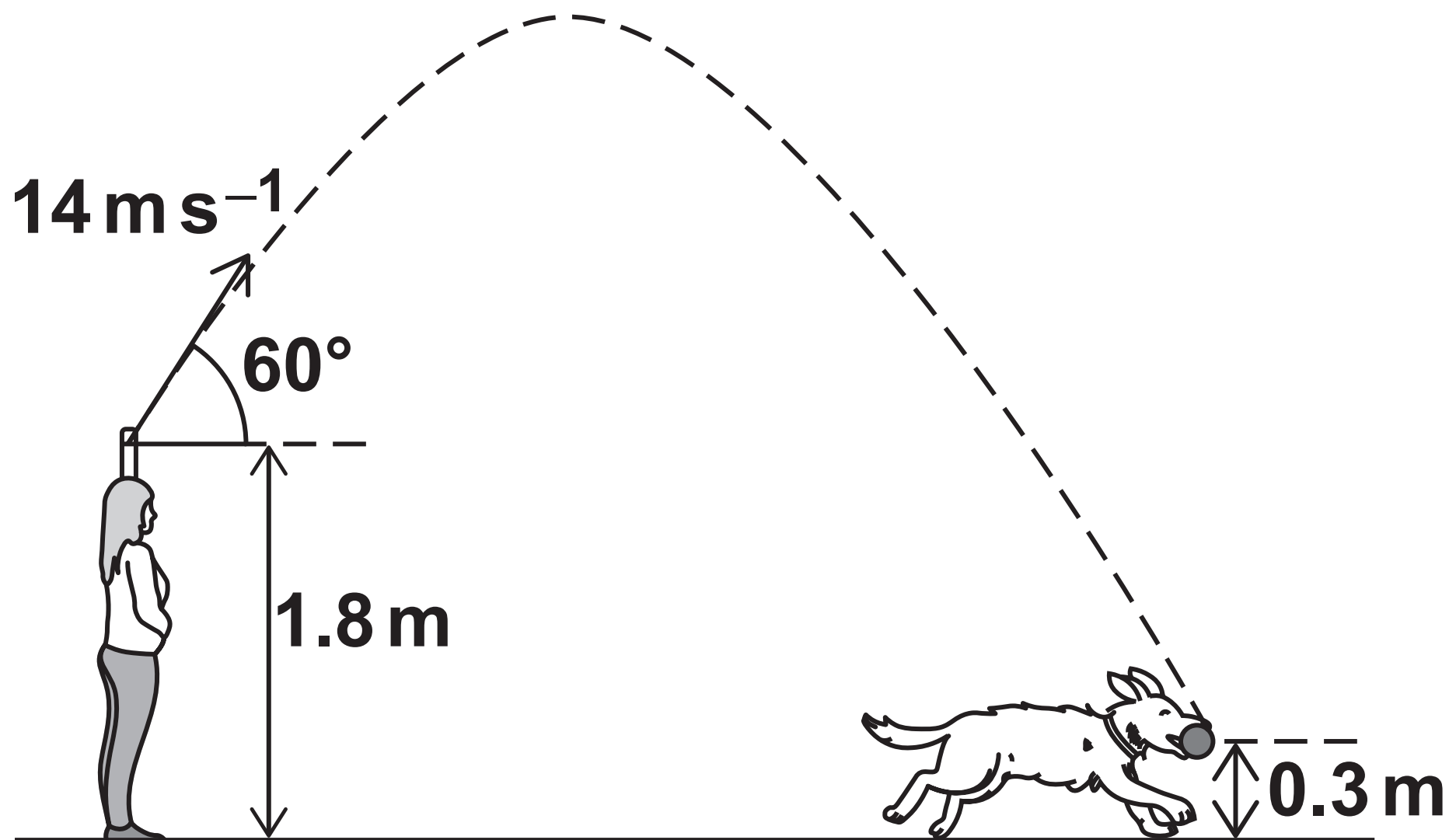
Nell and Maia are initially standing next to each other.

Nell throws a ball forward, from a height of 1.8 metres above the surface of the beach, at an angle of 60° above the horizontal with a speed of 14 ms^{-1}

Exactly 0.2 seconds AFTER the ball is thrown, Maia sets off from Nell and runs across the surface of the beach, in a straight line with a constant acceleration $a \text{ ms}^{-2}$



Maia catches the ball when it is 0.3 metres above ground level as shown in the diagram below.



Find a [7 marks]

[Turn over]



Handwriting practice lines consisting of 12 horizontal black lines.



END OF QUESTIONS



Additional page, if required. Write the question numbers in the left-hand margin.

[illegible]

Additional page, if required. Write the question numbers in the left-hand margin.

[illegible]

Additional page, if required. Write the question numbers in the left-hand margin.

[illegible]

BLANK PAGE

For Examiner's Use	
Question	Mark
1	
2	
3	
4	
5	
6	
7	
8	
9	
10	
11	
12	
13	
14	
15	
16	
17	
18	
19	
20	
TOTAL	

Copyright information

For confidentiality purposes, all acknowledgements of third-party copyright material are published in a separate booklet. This booklet is published after each live examination series and is available for free download from www.aqa.org.uk.

Permission to reproduce all copyright material has been applied for. In some cases, efforts to contact copyright-holders may have been unsuccessful and AQA will be happy to rectify any omissions of acknowledgements. If you have any queries please contact the Copyright Team.

Copyright © 2023 AQA and its licensors. All rights reserved.

G/LM/Jun23/7357/2/E3



9 0



2 3 6 A 7 3 5 7 / 2