



Surname _____

Forename(s) _____

Centre Number _____

Candidate Number _____

Candidate Signature _____

I declare this is my own work.

A-level

PHYSICS

Paper 3

Section B Medical physics

7408/3BB

Thursday 15 June 2023

Morning

At the top of the page, write your surname and forename(s), your centre number, your candidate number and add your signature.

[Turn over]



Time allowed: The total time for both sections of this paper is 2 hours. You are advised to spend approximately 50 minutes on this section.

MATERIALS

For this paper you must have:

- a pencil and a ruler
- a scientific calculator
- a Data and Formulae Booklet
- a protractor.

INSTRUCTIONS

- Use black ink or black ball-point pen.
- Answer ALL questions.
- You must answer the questions in the spaces provided. Do not write on blank pages.
- If you need extra space for your answer(s), use the lined pages at the end of this book. Write the question number against your answer(s).
- Do all rough work in this book. Cross through any work you do not want to be marked.
- Show all your working.



INFORMATION

- **The marks for questions are shown in brackets.**
- **The maximum mark for this paper is 35.**
- **You are expected to use a scientific calculator where appropriate.**
- **A Data and Formulae Booklet is provided as a loose insert.**

DO NOT TURN OVER UNTIL TOLD TO DO SO



0	2
---	---

Electrophoretic screens are used in handheld electronic devices.

The screen contains individual squares known as pixels. Pixels can be changed independently from light to dark to create the shapes of letters and numbers. An external light source is needed in order to read the screen.

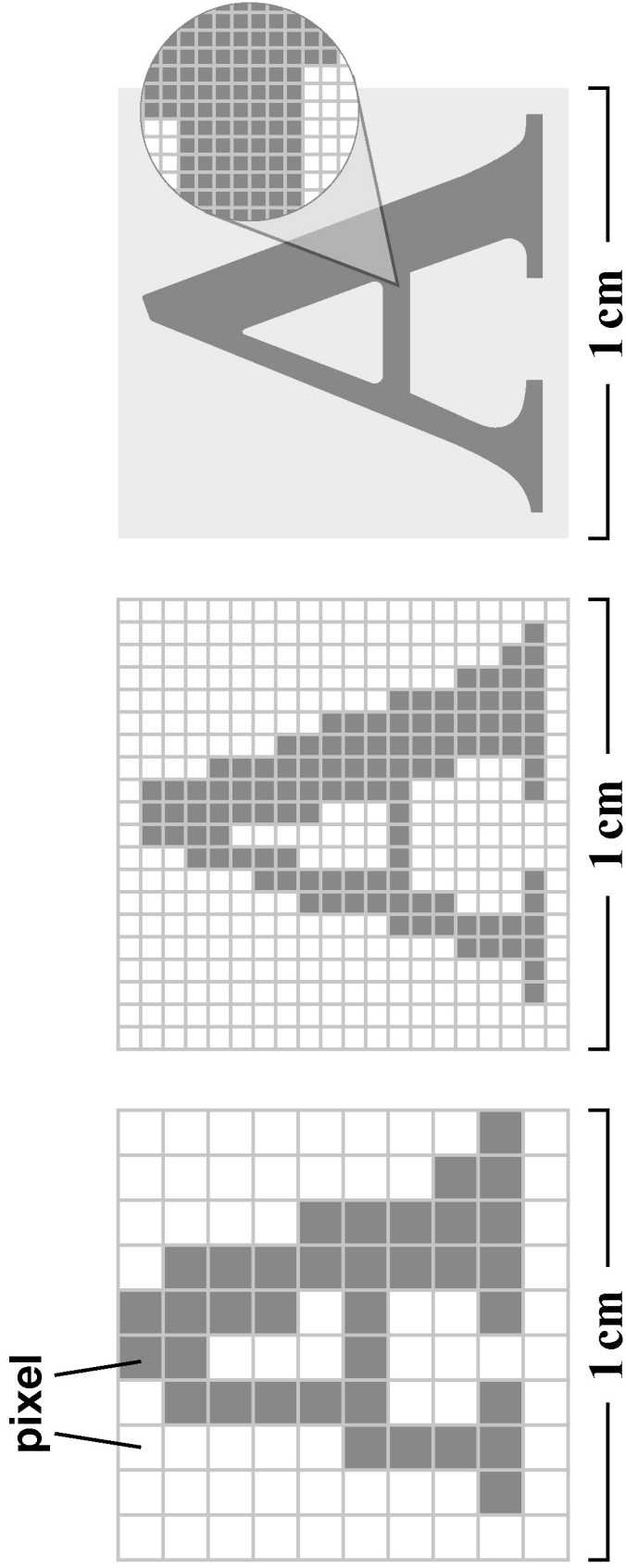
FIGURE 1, on page 6, shows a letter formed by three electrophoretic screens that have different pixel line densities. Pixel line density is the number of pixels along a 1.0 cm length of the screen.

[Turn over]





FIGURE 1



0 2 . 1

A particular screen is designed so that two dark pixels separated by one light pixel cannot be resolved as separate images by the eye when viewed from a distance of 0.50 m.



Determine, in pixels per cm, the minimum pixel line density required for this screen.

typical diameter of cones in a human eye at the fovea = 1.5 μm

typical length of the human eye = 21 mm

[3 marks]

pixels per cm = _____

[Turn over]



0 2 . 2

On a different electrophoretic screen, two dark pixels separated by one light pixel can just be resolved at a particular distance when the external light source is bright.

Explain why these pixels cannot be resolved at the same distance when the intensity of the external light source is reduced. [3 marks]



[Turn over]



FIGURE 2, on the opposite page, shows the spectral response of the three different types of cone in a human eye.

0 2 . 3

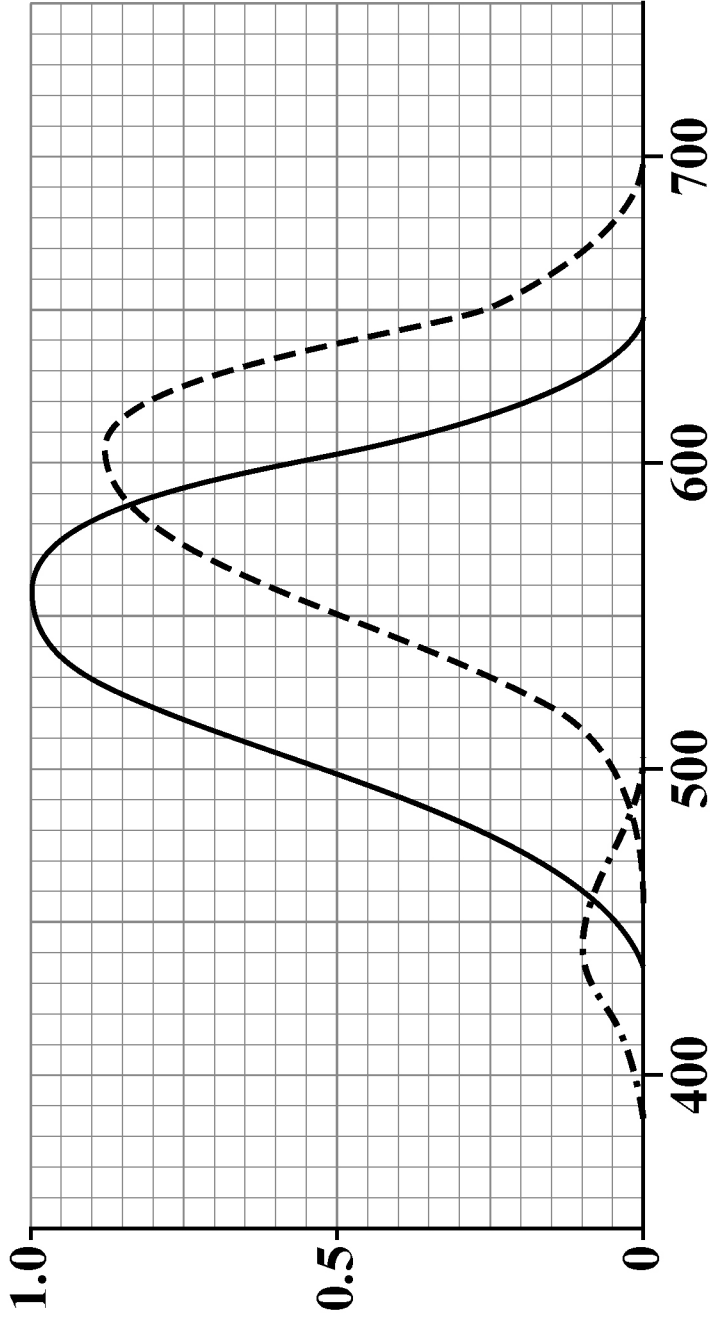
The eye is illuminated by light of wavelength 603 nm.

Show that the response of a red-sensitive cone is approximately double the response of a green-sensitive cone. [1 mark]



FIGURE 2

relative sensitivity



wavelength / nm

KEY

- dash-dot line blue-sensitive
- solid line green-sensitive
- dashed line red-sensitive

[Turn over]



0 2 . 4

Other types of screen use blue, green and red pixels to produce coloured images.

TABLE 1 shows the wavelength of the light emitted by each pixel when it is turned on.

TABLE 1

PIXEL	WAVELENGTH / nm
blue	450
green	520
red	650



On one screen, the blue pixels are turned off. When the green pixels and the red pixels are turned on, they emit light with the same intensity. A human eye that has the spectral response shown in FIGURE 2, on page 11, responds to this light.

Determine, in nm, the SINGLE wavelength of light that will produce the same response in the same human eye as the light emitted from the green and red pixels. [3 marks]

wavelength = _____ nm

[Turn over]

10

03.1

Define sound intensity. [1 mark]



0	3	.	2
---	---	---	---

The intensity level, in dB, of a sound is I .

What is the intensity level of a sound with double the intensity? [1 mark]

Tick (✓) ONE box.

$I + 2$

$I + 3$

$I + 7$

$2I$

$3I$

I^2

[Turn over]



0	3	.	3
---	---	---	---

The amplitude of the pressure wave at the oval window of an ear is 20 times greater than at the tympanic membrane.

Calculate the ratio $\frac{\text{force on oval window}}{\text{force on tympanic membrane}}$.

area of oval window = $5.9 \times 10^{-6} \text{ m}^2$

area of tympanic membrane = $7.2 \times 10^{-5} \text{ m}^2$

[2 marks]

ratio = _____

—
4



BLANK PAGE

[Turn over]

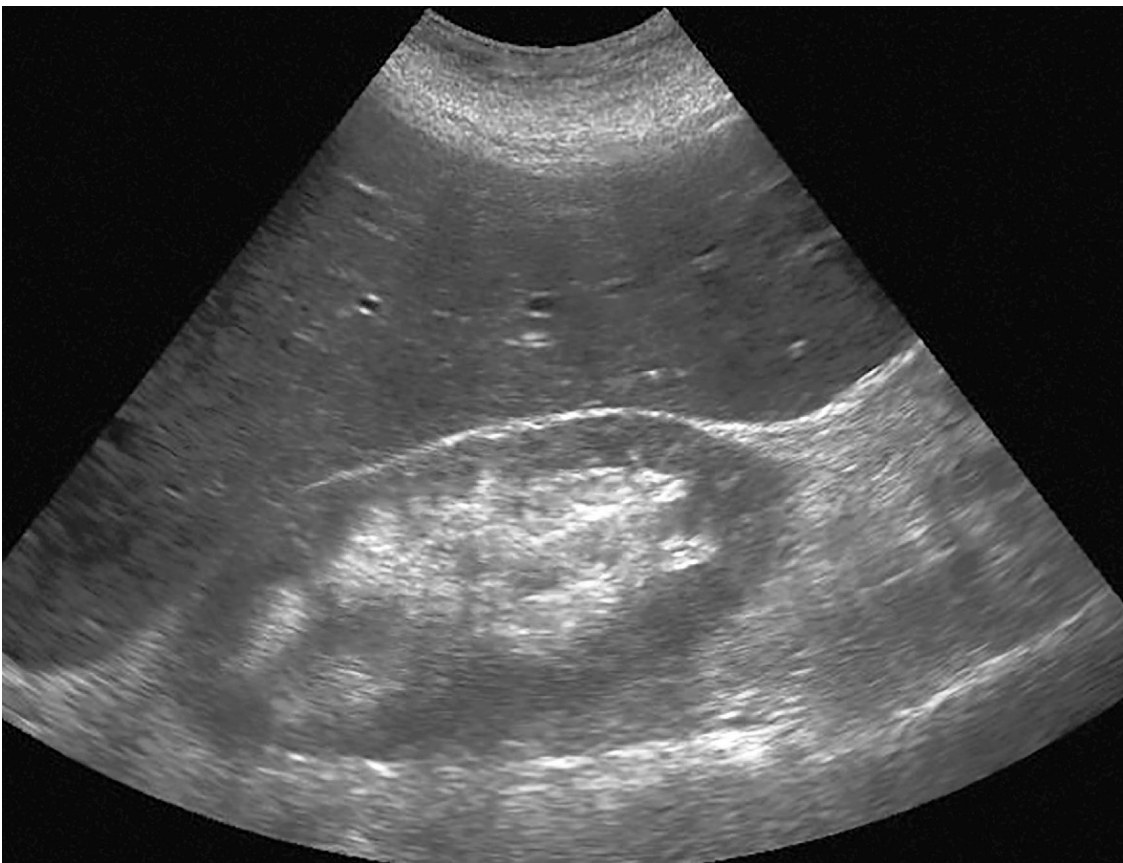


04

Different ultrasound techniques are used to investigate the health of a patient's kidneys.

04.1

FIGURE 3 shows the results of an ultrasound scan of a kidney using one technique.

FIGURE 3

Identify the type of ultrasound scan used to produce FIGURE 3, on the opposite page.

Explain your answer. [1 mark]

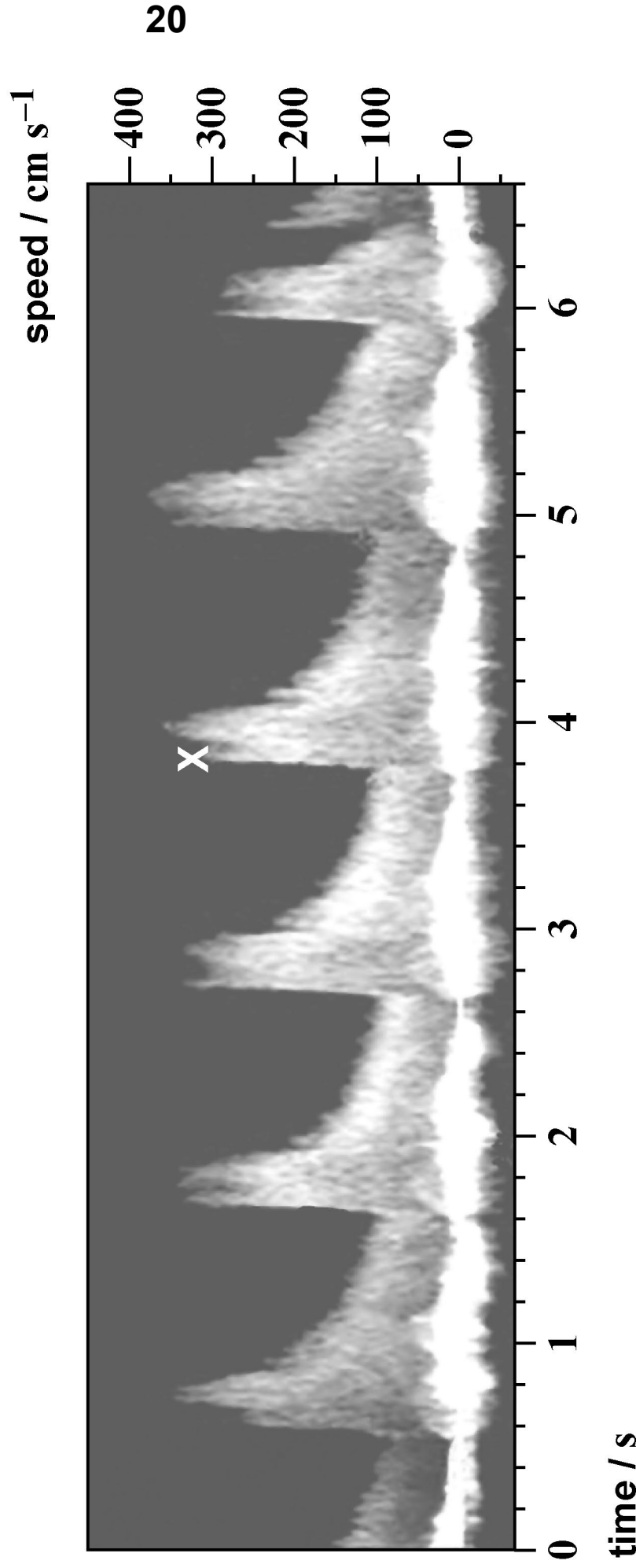
[Turn over]



Another ultrasound technique is used to measure the speed of blood flow in one of the kidney's blood vessels.

FIGURE 4, on the opposite page, shows an image formed using this technique. It shows how the speed of flow through the blood vessel varies with time. Point X shows this speed at one instant of time.

FIGURE 4





0 4 . 2

Determine the patient's heart rate in beats per minute. [3 marks]

heart rate = _____ beats per minute

[Turn over]



04.3

An ECG was made for the patient in Question 04.2, on page 21.

FIGURE 5, on the opposite page, shows one heartbeat from the ECG.

Annotate FIGURE 5 to show:

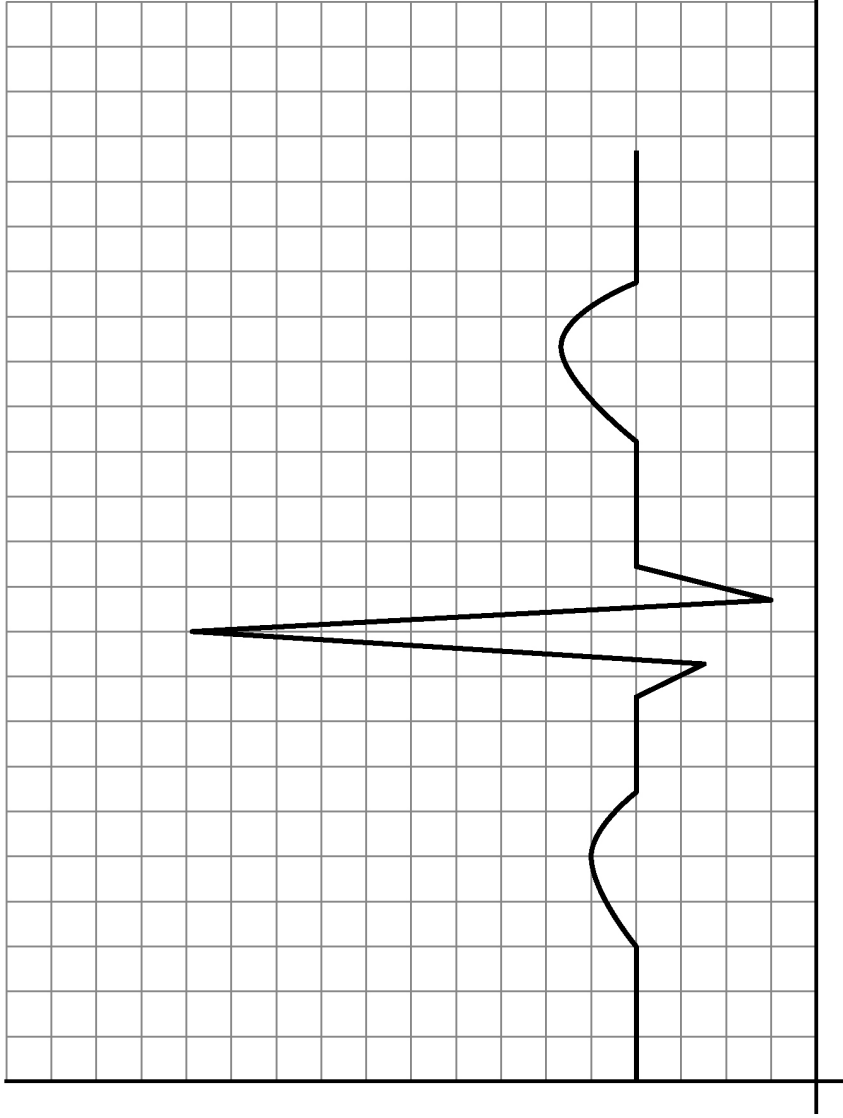
- units on both axes
- scales on both axes
- point Y that corresponds to point X on FIGURE 4, on page 20.

[4 marks]



FIGURE 5

potential difference / _____



time / _____

[Turn over]

[Turn over]

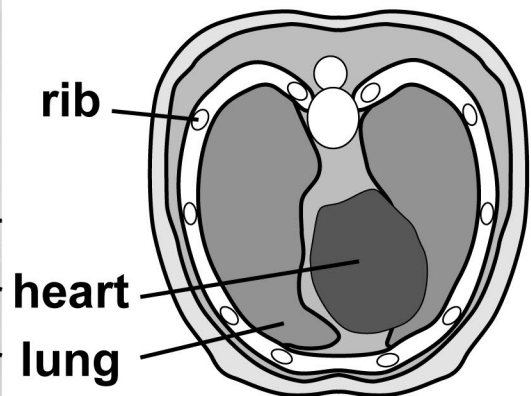
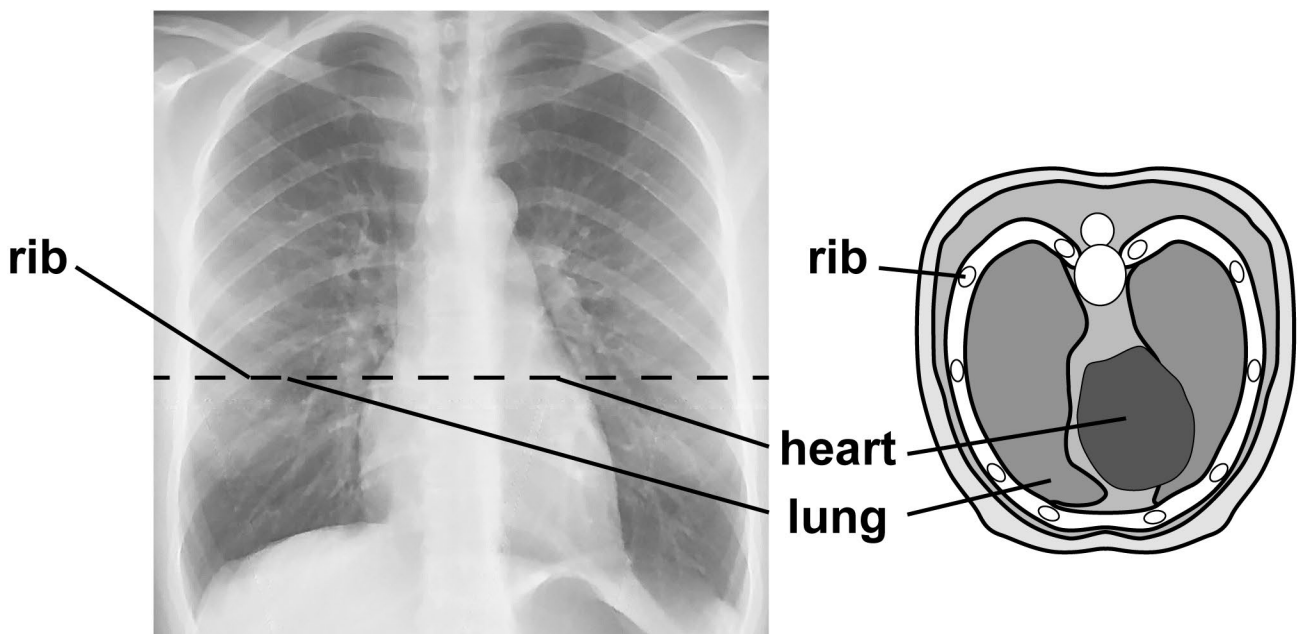
11



05.1

FIGURE 6 shows an X-ray image of a chest on photographic film.

FIGURE 7 shows a diagram of a horizontal cross-section of the chest along the dashed line in **FIGURE 6**.

FIGURE 6**FIGURE 7**

Discuss the half-value thicknesses of the labelled body parts relative to each other.

In your answer you should:

- **explain how the intensity of the X-rays affects the brightness of the image**
- **explain how the thickness of the labelled parts affects the intensity of the X-rays**
- **compare the relative half-value thicknesses of the labelled body parts.**

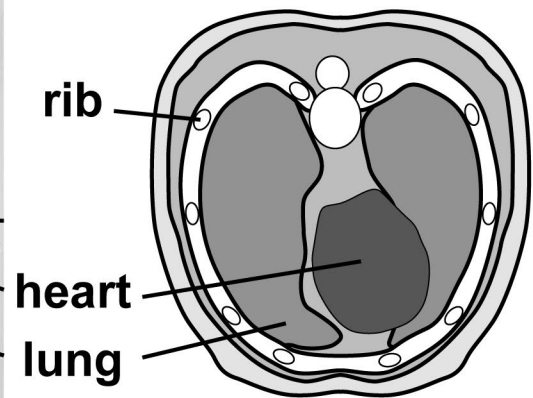
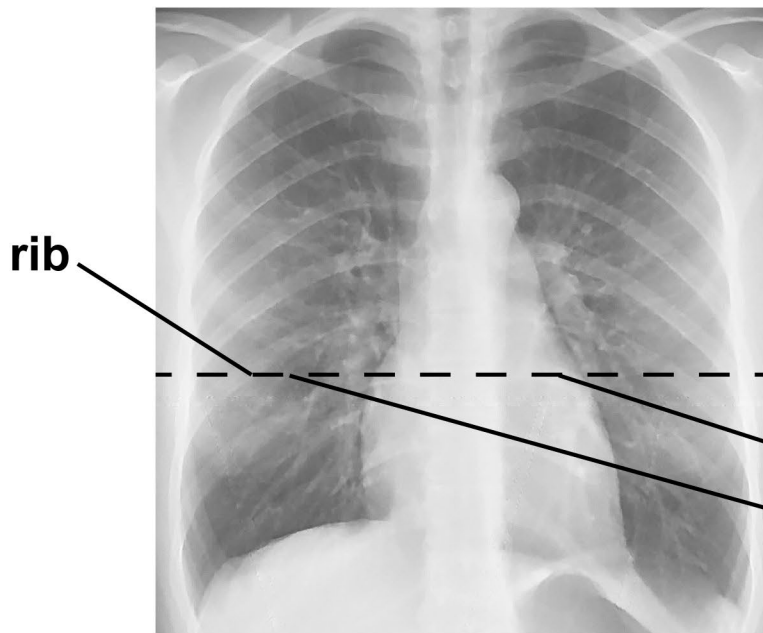
[6 marks]

[Turn over]



REPEAT OF FIGURE 6

REPEAT OF FIGURE 7



BLANK PAGE

For Examiner's Use	
Question	Mark
1	
2	
3	
4	
5	
TOTAL	

Copyright information

For confidentiality purposes, all acknowledgements of third-party copyright material are published in a separate booklet. This booklet is published after each live examination series and is available for free download from www.aqa.org.uk.

Permission to reproduce all copyright material has been applied for. In some cases, efforts to contact copyright-holders may have been unsuccessful and AQA will be happy to rectify any omissions of acknowledgements. If you have any queries please contact the Copyright Team.

Copyright © 2023 AQA and its licensors. All rights reserved.

WP/M/NC/Jun23/7408/3BB/E3