

Please write clearly in block capitals.

Centre number

--	--	--	--	--

Candidate number

--	--	--	--

Surname

Forename(s)

Candidate signature

I declare this is my own work.

A-level

DESIGN AND TECHNOLOGY: FASHION AND TEXTILES

Paper 2 Designing and Making Principles

Friday 16 June 2023

Morning

Time allowed: 1 hour 30 minutes

Materials

For this paper you must have:

- normal writing and drawing instruments
- a scientific calculator.

Instructions

- Use black ink or black ball-point pen. Use pencil only for drawing.
- Fill in the boxes at the top of this page.
- Answer **all** questions.
- You must answer the questions in the spaces provided. Do not write outside the box around each page or on blank pages.
- If you need extra space for your answer(s), use the lined pages at the end of this book. Write the question number against your answer(s).
- Do all rough work in this book. Cross through any work you do not want to be marked.

Information

- The marks for questions are shown in brackets.
- The maximum mark for this paper is 80.
- There are 30 marks for **Section A** and 50 marks for **Section B**.

For Examiner's Use	
Question	Mark
1	
2	
3–4	
5	
6	
7	
8–9	
10–11	
12	
TOTAL	



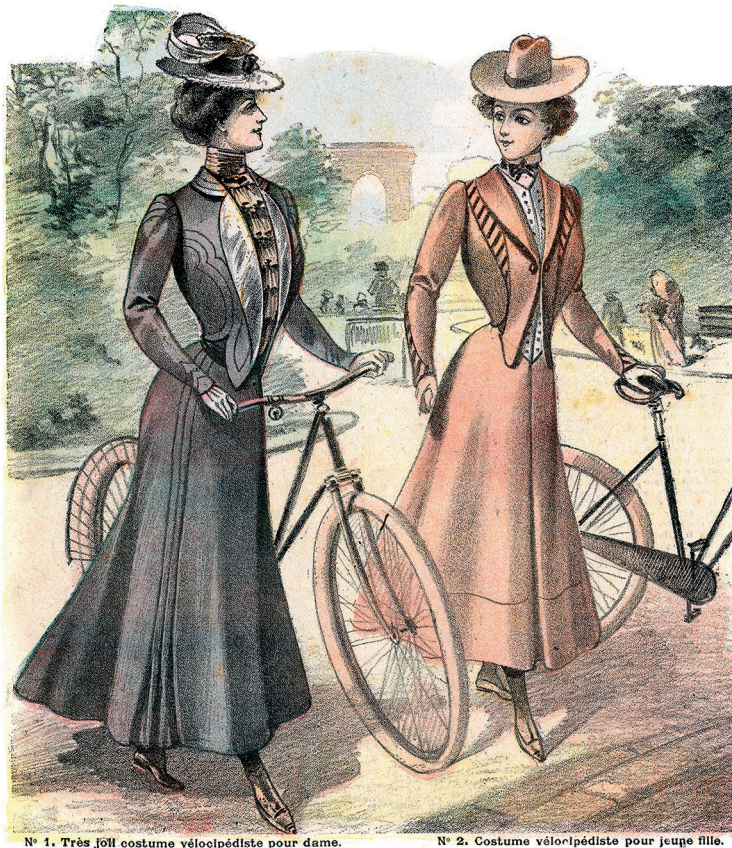
J U N 2 3 7 5 6 2 2 0 1

Section A – Product Analysis

Answer **all** questions in this section.

0 1 . 1

Figure 1
1900s cycling clothing



Analyse the **style** of the clothing and accessories in **Figure 1** and evaluate how the **style** reflects the role of women in society during the 1900s.

[9 marks]



[illegible]

The 2020s cycling clothing in **Figure 2** is made from polyester jersey fabric.

[9 marks]

[illegible]

24

Turn over ►



0	2
---	---

Figures 3 and 4 show two caps.

Figure 3



Figure 4



	Figure 3	Figure 4
Fibre content	acrylic	cotton
Place of cap manufacture	local	offshore
New or waste fabric	waste fabric	new fabric



Compare and contrast the environmental impact of each cap.

[6 marks]

6

Turn over for Section B

Turn over ►



Section B – Design and Commercial ManufactureAnswer **all** questions in this section.**0 3**State **two** reasons why it is important to use the correct tools and equipment for cutting fabric.**[2 marks]**

Reason 1 _____

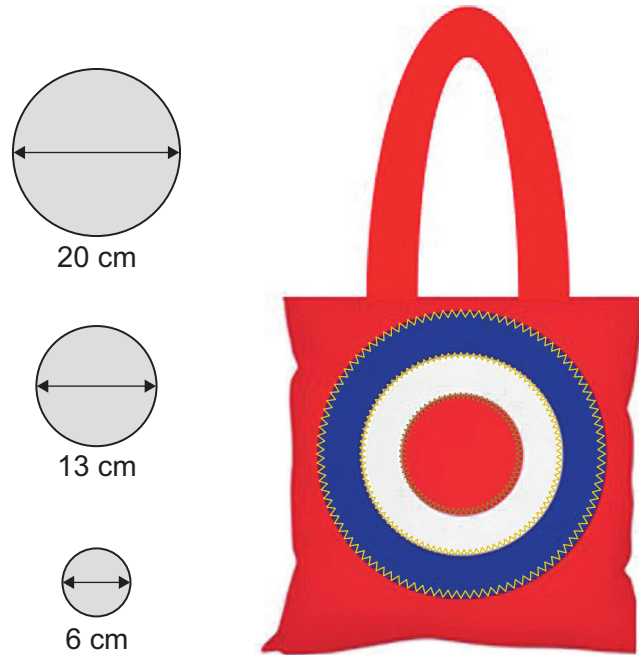
Reason 2 _____

0 4Explain how anthropometric **and** ergonomic data are used when designing a backpack.**[4 marks]**

6

0 5 . 1

Figure 5
Stitching on bag and templates for three circles



The circles in **Figure 5** are stitched onto the bag at the rate of 0.13 seconds per cm.

A batch of 9550 bags is made.

Calculate the time it takes to stitch the circles onto the front of the bags.

Give your answer to the nearest hour.

Show your working.

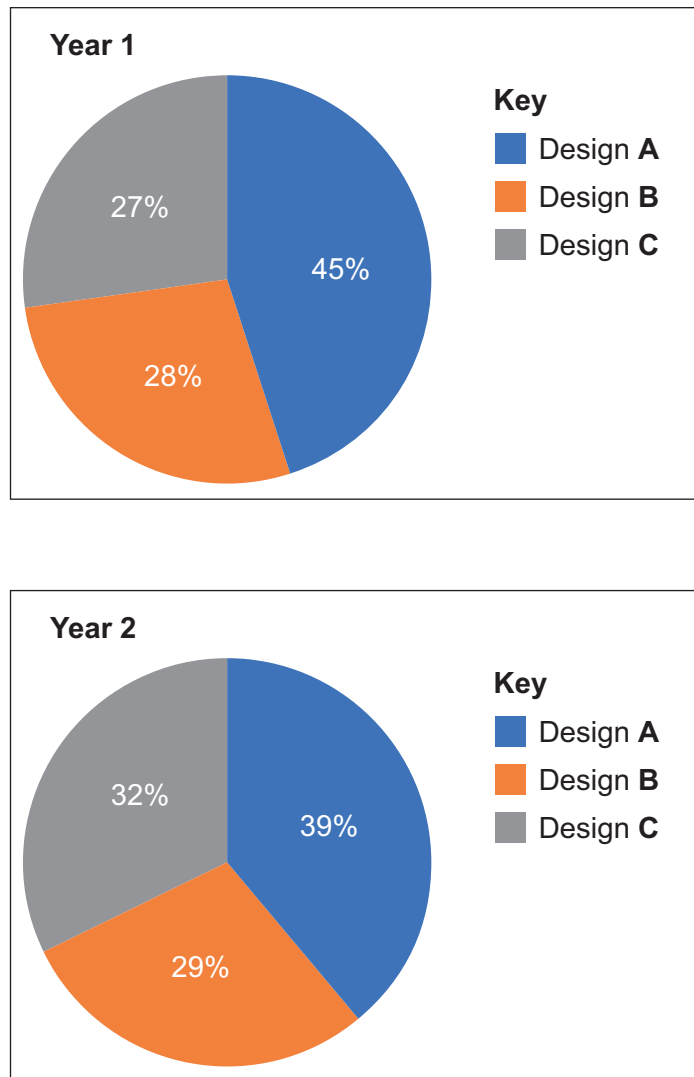
[4 marks]

Answer _____ hours

Turn over ►



0 5 . 2

Figure 6**Percentage sales of three different designs of bag over two years**

The manufacturer makes three different designs of bag.

Figure 6 shows the percentage sales of each design for two different years.

Calculate the percentage change in sales for each design of bag from year 1 to year 2.

[3 marks]

Design A _____

Answer _____ %

Design B _____

Answer _____ %

Design C _____

Answer _____ %

0 5 . 3 Which design has been least successful over the two-year period?

You **must** give a reason for your answer.

[1 mark]

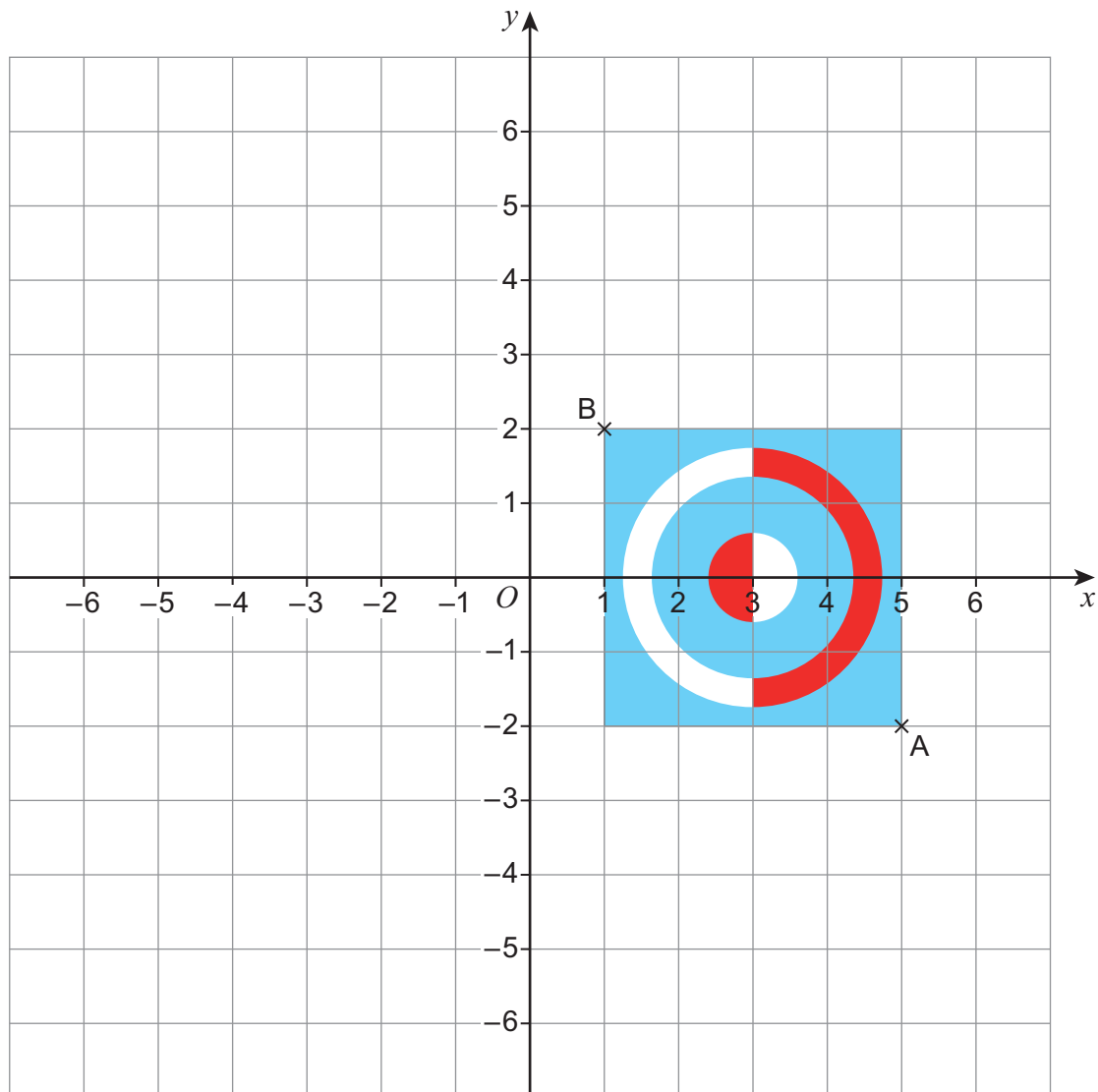
Question 5 continues on the next page

Turn over ►



0 5 . 4

Figure 7
Stitched logo on bag



Give the coordinate for datum point **A**.

[1 mark]

0 5 . 5

The logo is rotated from the datum point **B** by 180° .

Give the new coordinate for datum point **A**.

[1 mark]

10



0	6
---	---

Third party feedback can be collected from various sources.

Explain how a designer of children's soft toys would use a range of third party feedback in product development.

[6 marks]

6

Turn over for the next question

Turn over ►



7

[9 marks]

[illegible]

9



0	8
---	---

Give **two** examples of quality assurance symbols used on fashion and textile products.

[2 marks]

1 _____

2 _____

0	9
---	---

.	1
---	---

State what is meant by the term e-textile.

[1 mark]

0	9
---	---

.	2
---	---

Give **two** examples of e-textile products.

[2 marks]

Example 1 _____

Example 2 _____

5

Turn over for the next question

Turn over ►



This image shows a blank sheet of white paper with horizontal ruling lines. The lines are evenly spaced and extend across the width of the page. There are no margins, text, or other markings on the paper.

2

Give examples of Pop art fashion designs in your answer.

This image shows a single sheet of white paper with horizontal ruling lines. The lines are evenly spaced and run across the width of the page. There are no margins, text, or other markings on the paper.

6

There are no questions printed on this page

*Do not write
outside the
box*

**DO NOT WRITE ON THIS PAGE
ANSWER IN THE SPACES PROVIDED**



[illegible]

[illegible]

[illegible]

[illegible]

There are no questions printed on this page

*Do not write
outside the
box*

**DO NOT WRITE ON THIS PAGE
ANSWER IN THE SPACES PROVIDED**



There are no questions printed on this page

*Do not write
outside the
box*

**DO NOT WRITE ON THIS PAGE
ANSWER IN THE SPACES PROVIDED**

Copyright information

For confidentiality purposes, all acknowledgements of third-party copyright material are published in a separate booklet. This booklet is published after each live examination series and is available for free download from www.aqa.org.uk.

Permission to reproduce all copyright material has been applied for. In some cases, efforts to contact copyright-holders may have been unsuccessful and AQA will be happy to rectify any omissions of acknowledgements. If you have any queries please contact the Copyright Team.

Copyright © 2023 AQA and its licensors. All rights reserved.



2 4



2 3 6 A 7 5 6 2 / 2

G/Jun23/7562/2