



Functional Skills Certificate
June 2015

Functional Mathematics Level 1 Data Book (Examination)

4367

Insert

Instructions

- This copy of the Data Book is for use in the examination. It should **not** be given to candidates in advance.

Advice

- This book will not be collected in for marking. Ensure that all working that you wish to have marked is written in the spaces provided in the question/answer book.

4367

QAN 500/8703/4

There are no data printed on this page

Data Sheet for High Pond Activity Centre

High Pond is an activity centre for school students and staff.

Activities

Rock climbing	Canoeing	Hill walking	Archery
Abseiling	Orienteering	Caving	Horse riding

Costs

	Cost per person	
	Student	Staff
Monday to Friday	£250	£280
Friday to Monday	£180	£200
Free staff places 1 free staff place for every 12 students		

The total number of students and staff must be between 36 and 55 inclusive.

There must be at least 1 member of staff for every 8 students.

All meals and activities are included in the costs.

Contact the Centre Manager to make a booking.

Turn over for the next data sheet

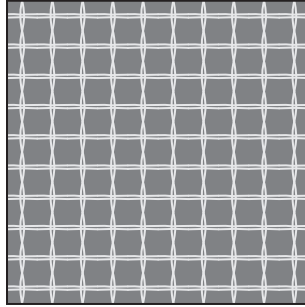
Turn over ►

Data Sheet for Rug Making

This is what you need to make a rug.

Rug canvas

A rug canvas has a lot of small holes.

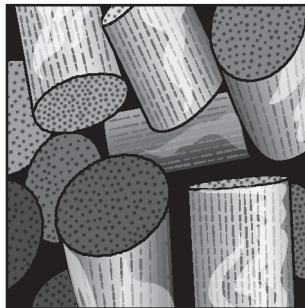


You need a piece of rug canvas the same size as the rug you want to make.

Strands of wool

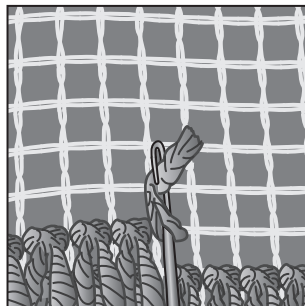
You make rugs by attaching strands of wool to the rug canvas.

You can buy packs of strands of wool.



A latch hook

You use a latch hook to attach the wool to the rug canvas.



How many strands of wool you need to make a rug

Follow these steps to work out the number of strands of wool you need.

Step 1 Work out length of rug canvas (cm) \times width of rug canvas (cm)

Step 2 Work out answer to **Step 1** \div 2

Step 3 Work out answer to **Step 1** + answer to **Step 2**

Example

To make a rug measuring 75 cm by 60 cm

Step 1 $75 \times 60 = 4500$

Step 2 $4500 \div 2 = 2250$

Step 3 $4500 + 2250 = 6750$

You need 6750 strands of wool to make the rug.

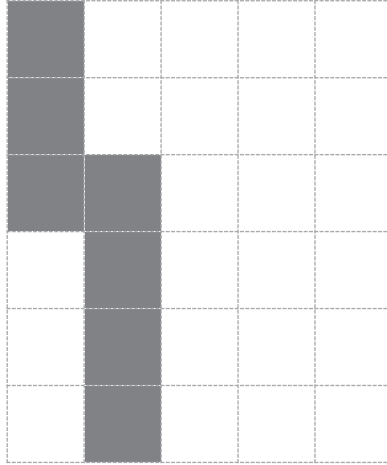
This Data Sheet continues on the next page

Turn over ►

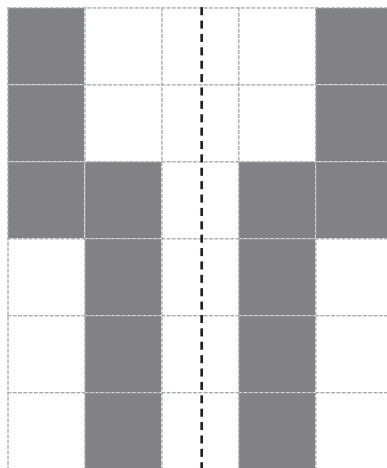
Symmetrical rug patterns

This is how you can design a rug with a symmetrical pattern.

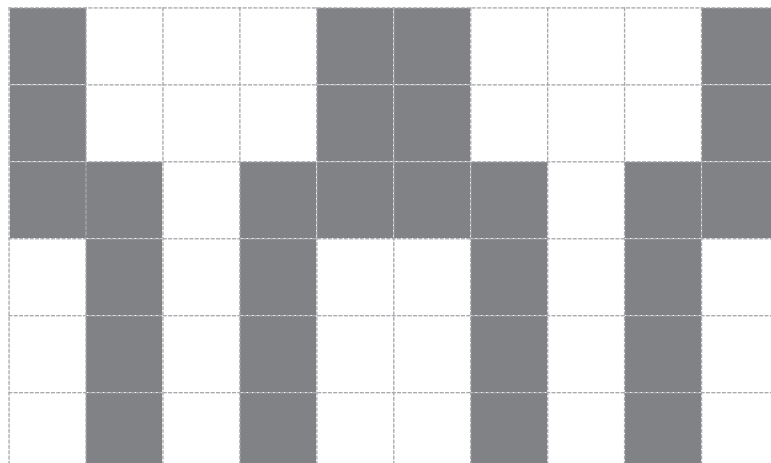
Start with a shape on a grid.



Reflect the shape in a vertical line of symmetry.



Repeat the pattern.



END OF DATA

There are no data printed on this page

There are no data printed on this page